

LEGEND

- PERSONNEL FLOW
- WASTE FLOW
- MATERIAL FLOW
- PRODUCT FLOW

0	INTERIOR FIT-OUT - ISSUED FOR CONSTRUCTION	JLB	KJM	08/19/2016
A	ISSUED FOR CLIENT REVIEW		REC	06/08/2016
Revision				
By: Apsd MM/DD/YYYY				
PACKAGE C - INTERIOR FIT-OUT				
PACKAGE B - SUPERSTRUCTURE & SHELL				
PACKAGE A - FOUNDATIONS & BELOW SLAB				
Issued				
By: Apsd MM/DD/YYYY				

Permit-Seal

Client/Project
IMMUCELL

Lot 11 - Second Tee Business Park
1039 Riverside Street
Portland, Maine 04103

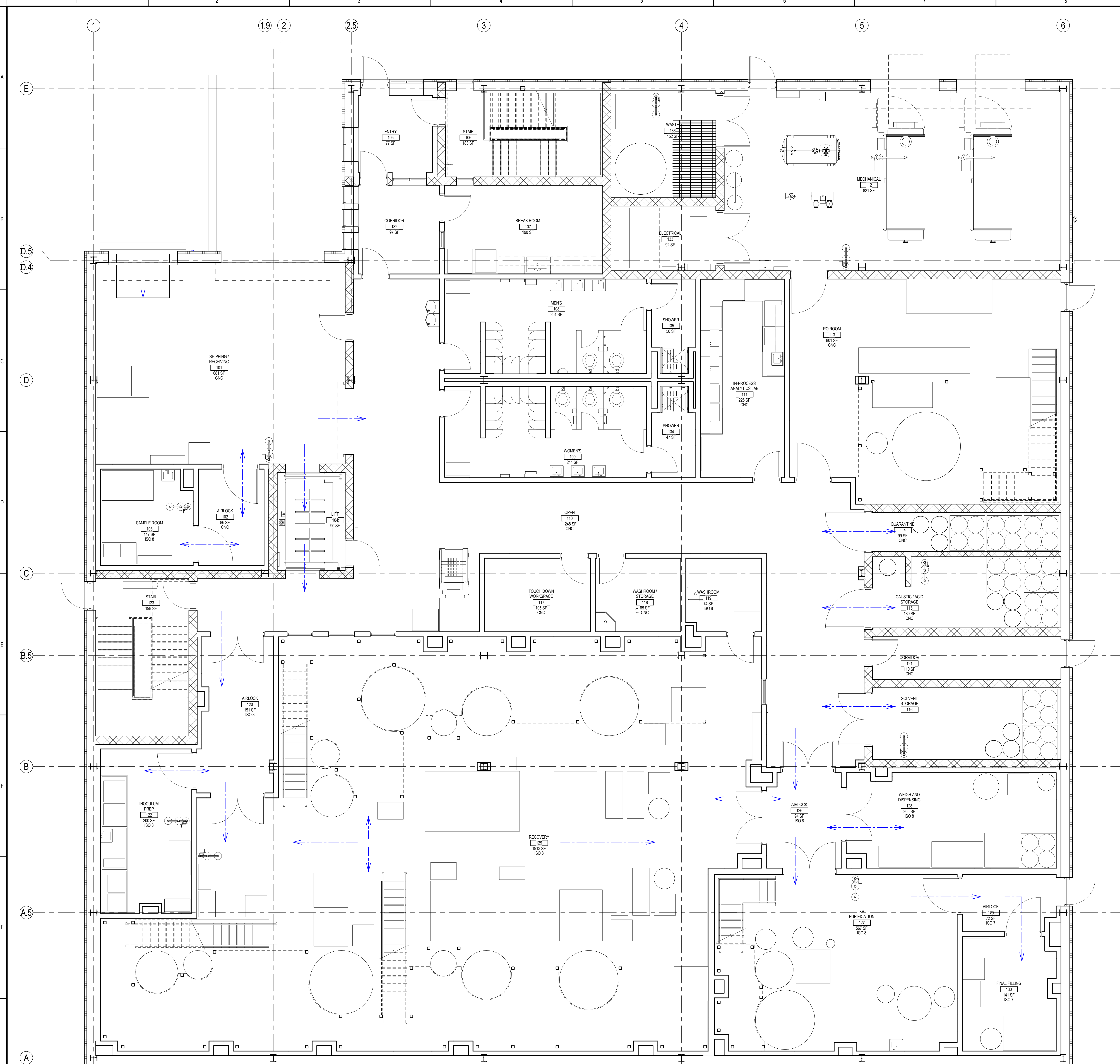
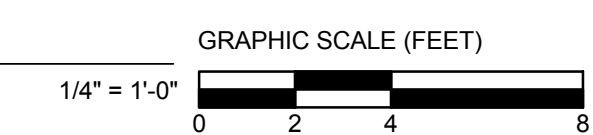
Title
FIRST FLOOR MATERIAL FLOW DIAGRAM

Project No.
191504176

Scale
1/4" = 1'-0"

Revision
0

Drawing No.
G-108-C



1 FIRST FLOOR MATERIAL FLOW DIAGRAM
1/4" = 1'-0"

ORIGINAL SHEET: A08 E (3/14/16)
 REVISED AS PER PERMITSUBMITTALS: ARCHITECTURAL, 1/15/2016
 PROJECT NO. 191504176