

- LEGEND**
- PERSONNEL FLOW
 - WASTE FLOW
 - MATERIAL FLOW
 - PRODUCT FLOW

Revision	By	App'd	MM/DD/YYYY
0	JLB	KJM	08/19/2016
CONSTRUCTION			
A	REC		06/08/2016
ISSUED FOR CLIENT REVIEW			
Revision			
PACKAGE C - INTERIOR FIT-OUT			
08/19/2016			
PACKAGE B - SUPERSTRUCTURE & SHELL			
08/03/2016			
PACKAGE A - FOUNDATIONS & BELOW SLAB			
07/22/2016			
Issued			
By App'd MM/DD/YYYY			

Permit-Seal

Client/Project
IMMUCELL

Lot 11 - Second Tee Business Park
1039 Riverside Street
Portland, Maine 04103

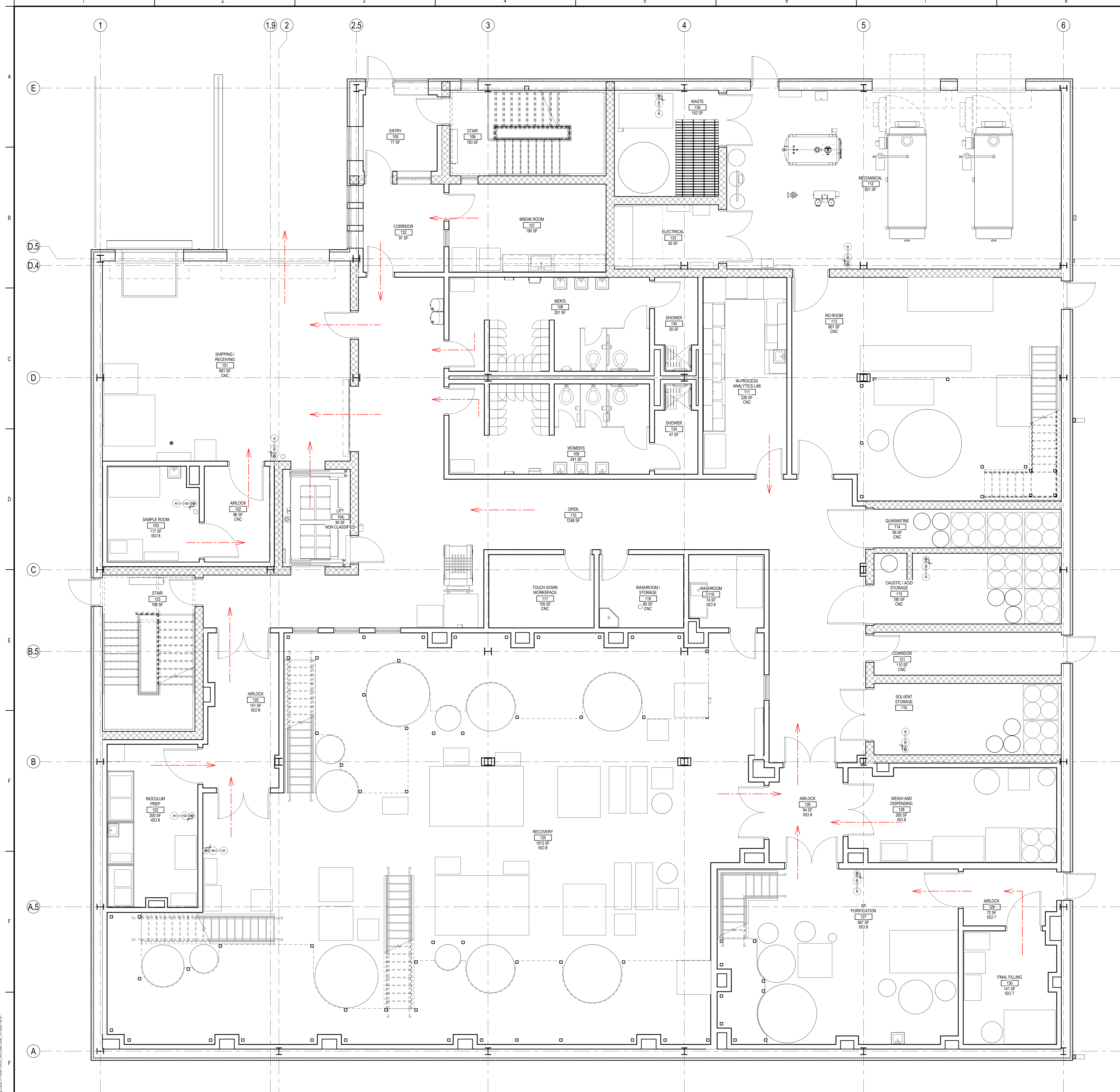
Title
FIRST FLOOR WASTE FLOW DIAGRAM

Project No.
191504176

Scale
1/4" = 1'-0"

Revision
0

Drawing No.
G-107-C



1 FIRST FLOOR WASTE FLOW DIAGRAM
1/4" = 1'-0"

ORIGINAL SHEET: A08 (3/14/16)
 REVISIONS: A11 (1/11/16), A12 (1/11/16), A13 (1/11/16), A14 (1/11/16), A15 (1/11/16), A16 (1/11/16), A17 (1/11/16), A18 (1/11/16), A19 (1/11/16), A20 (1/11/16), A21 (1/11/16), A22 (1/11/16), A23 (1/11/16), A24 (1/11/16), A25 (1/11/16), A26 (1/11/16), A27 (1/11/16), A28 (1/11/16), A29 (1/11/16), A30 (1/11/16), A31 (1/11/16), A32 (1/11/16), A33 (1/11/16), A34 (1/11/16), A35 (1/11/16), A36 (1/11/16), A37 (1/11/16), A38 (1/11/16), A39 (1/11/16), A40 (1/11/16), A41 (1/11/16), A42 (1/11/16), A43 (1/11/16), A44 (1/11/16), A45 (1/11/16), A46 (1/11/16), A47 (1/11/16), A48 (1/11/16), A49 (1/11/16), A50 (1/11/16), A51 (1/11/16), A52 (1/11/16), A53 (1/11/16), A54 (1/11/16), A55 (1/11/16), A56 (1/11/16), A57 (1/11/16), A58 (1/11/16), A59 (1/11/16), A60 (1/11/16), A61 (1/11/16), A62 (1/11/16), A63 (1/11/16), A64 (1/11/16), A65 (1/11/16), A66 (1/11/16), A67 (1/11/16), A68 (1/11/16), A69 (1/11/16), A70 (1/11/16), A71 (1/11/16), A72 (1/11/16), A73 (1/11/16), A74 (1/11/16), A75 (1/11/16), A76 (1/11/16), A77 (1/11/16), A78 (1/11/16), A79 (1/11/16), A80 (1/11/16), A81 (1/11/16), A82 (1/11/16), A83 (1/11/16), A84 (1/11/16), A85 (1/11/16), A86 (1/11/16), A87 (1/11/16), A88 (1/11/16), A89 (1/11/16), A90 (1/11/16), A91 (1/11/16), A92 (1/11/16), A93 (1/11/16), A94 (1/11/16), A95 (1/11/16), A96 (1/11/16), A97 (1/11/16), A98 (1/11/16), A99 (1/11/16), A100 (1/11/16)