

**GENERAL NOTES**

- REFER TO DRAWING E-300-C FOR GENERAL NOTES AND SYMBOLS.
- ROUTE ALL TELECOM CABLES AND CONDUIT TO IT ROOM 216.
- PROVIDE 2-CATE CABLES FOR EACH DATA OUTLET/WIFI ACCESS POINT AND 1-CATE CABLE FOR TELEPHONE JACK.
- REFER TO DWG. E-806-C FOR DOOR INTERLOCK MOTOR AND NOTES.
- REFER TO E-805-C FOR COMMUNICATIONS RISER DIAGRAMS.

**KEYED NOTES**

- PHONE CONNECTION FOR FAX AUTO DIALER.
- PROVIDE 3/4" CONDUIT AND CAT-6 CABLE FROM EACH CAMERA TO IT CLOSET 216.

Revision	By	App'd	DD.MA.YYYY
0			08/19/2016
INTERIOR FIT-OUT - ISSUED FOR CONSTRUCTION			
PACKAGE C - INTERIOR FIT-OUT			
PACKAGE B - SUPERSTRUCTURE & SHELL			
PACKAGE A - FOUNDATIONS & BELOW SLAB			
Issued			

Permit-Seal



Client/Project  
**IMMUCELL**

Lot 11 - Second Tee Business Park  
1039 Riverside Street  
Portland, Maine 04103

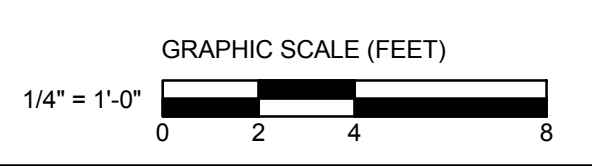
Title  
**FIRST FLOOR - TELECOMMUNICATIONS & SECURITY PLAN**

Project No. 191504176  
Scale 1/4" = 1'-0"  
Revision 0  
Drawing No.

**E-301-C**



**1 FIRST FLOOR - TELECOMMUNICATIONS & SECURITY PLAN**  
1/4" = 1'-0"



2025.04.15 11:51 AM C:\pwork\191504176\191504176\_01.dwg: immucell\_191504176.rvt  
 PLOT DATE: 04/15/2016

ORIGINAL SHEET: A48 E-301-C