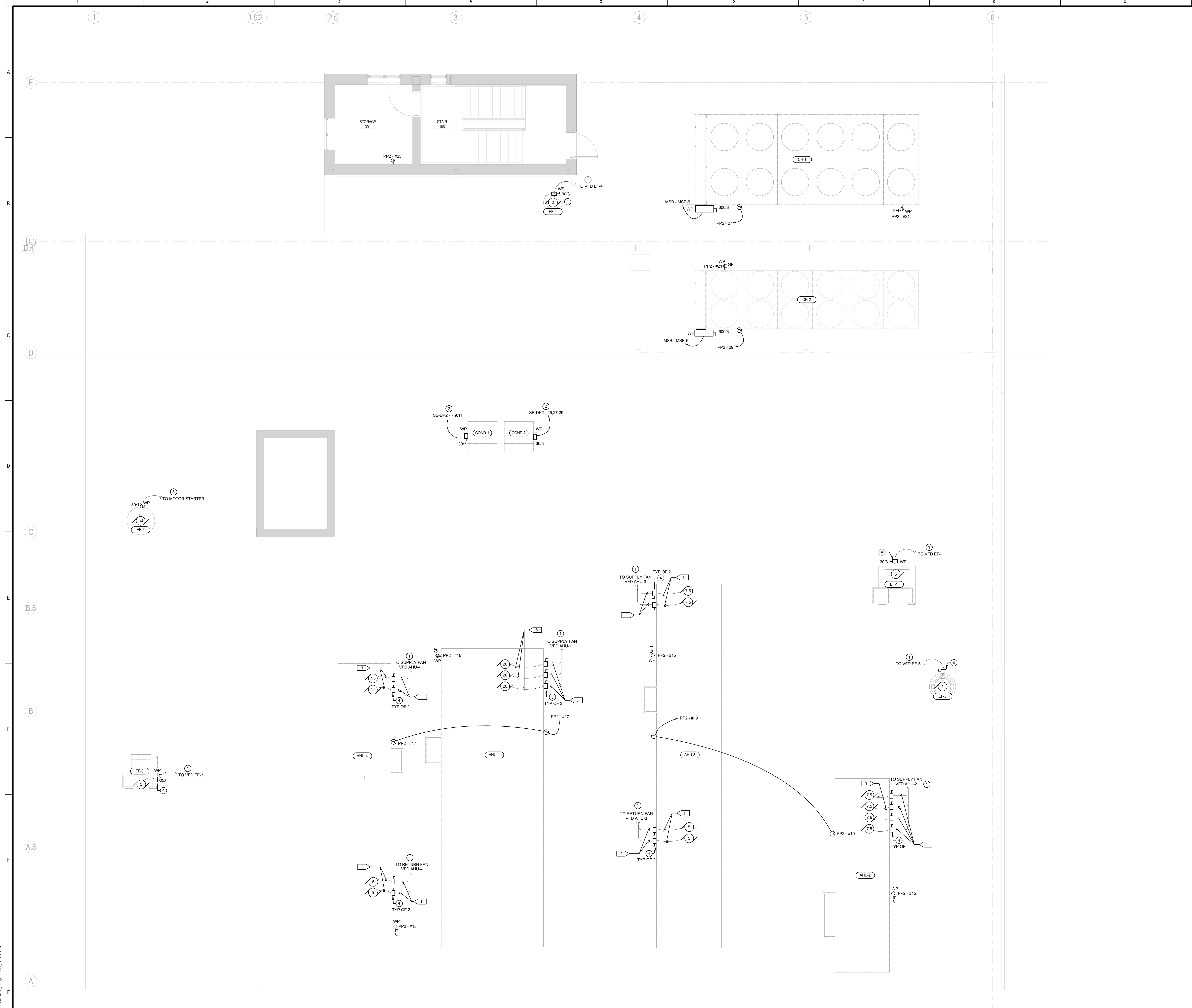


GENERAL NOTES

- REFER TO E-103-C FOR FEEDER SCHEDULE.
- CONTROL CONDUIT AND WIRING BY OTHERS.

KEYED NOTES

- TO VFD LOCATED ON SECOND FLOOR. SEE DRAWING E-102-C FOR LOCATION.
- COORDINATE POWER WIRING REQUIREMENTS WITH COLD ROOM VENDOR.
- TO MOTOR STARTER LOCATED ON SECOND FLOOR. SEE DRAWING E-102-C FOR LOCATION.
- 30A 3 POLE 60V, UNFUSED, NEMA 3R DISCONNECT SWITCH WITH MAKE BEFORE BREAK CONTACTS FOR VFD SHUT DOWN SIGNAL. PROVIDE 34°C W/ 2814-1F14G FOR VFD SHUT DOWN SIGNAL.
- 60A 3 POLE 60V UNFUSED NEMA 3R DISCONNECT SWITCH WITH MAKE BEFORE BREAK CONTACTS FOR VFD SHUT DOWN SIGNAL. PROVIDE 34°C W/ 2814-1F14G FOR VFD SHUT DOWN SIGNAL.



Revision	By	App'd	DD.MA.YYYY
0 - INTERIOR FIT-OUT - ISSUED FOR CONSTRUCTION			08/19/2016
PACKAGE C - INTERIOR FIT-OUT			08/19/2016
PACKAGE B - SUPERSTRUCTURE & SHELL			08/05/2016
PACKAGE A - FOUNDATIONS & BELOW SLAB			07/22/2016
Issued			DD.MA.YYYY



Client/Project
IMMUCELL

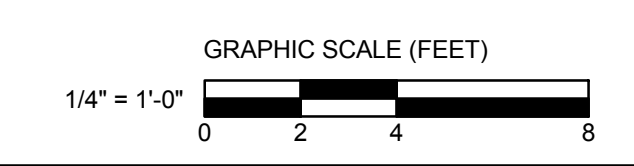
Lot 11 - Second Tee Business Park
 1039 Riverside Street
 Portland, Maine 04103

Title
ROOF PLAN - POWER PLAN

Project No. 191504176
 Scale 1/4" = 1'-0"

Revision 0
 Drawing No. **E-103-C**

1 ROOF - POWER PLAN
 1/4" = 1'-0"



2016/05/14 11:51 AM C:\p\m\m\191504176\191504176\191504176.dwg: immucell_191504176.rvt
 PLOT DATE: 08/19/2016