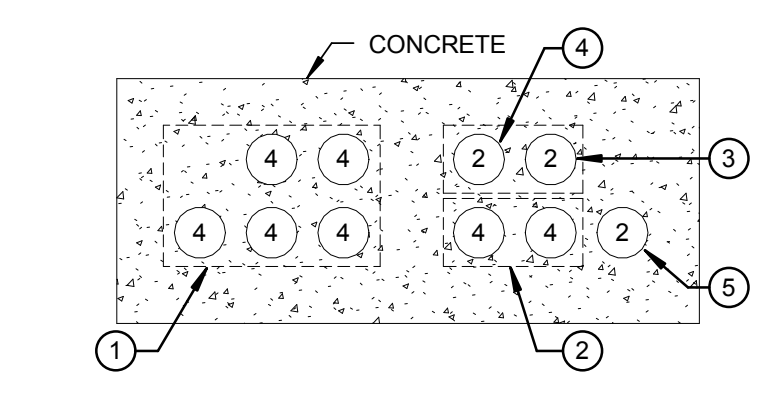
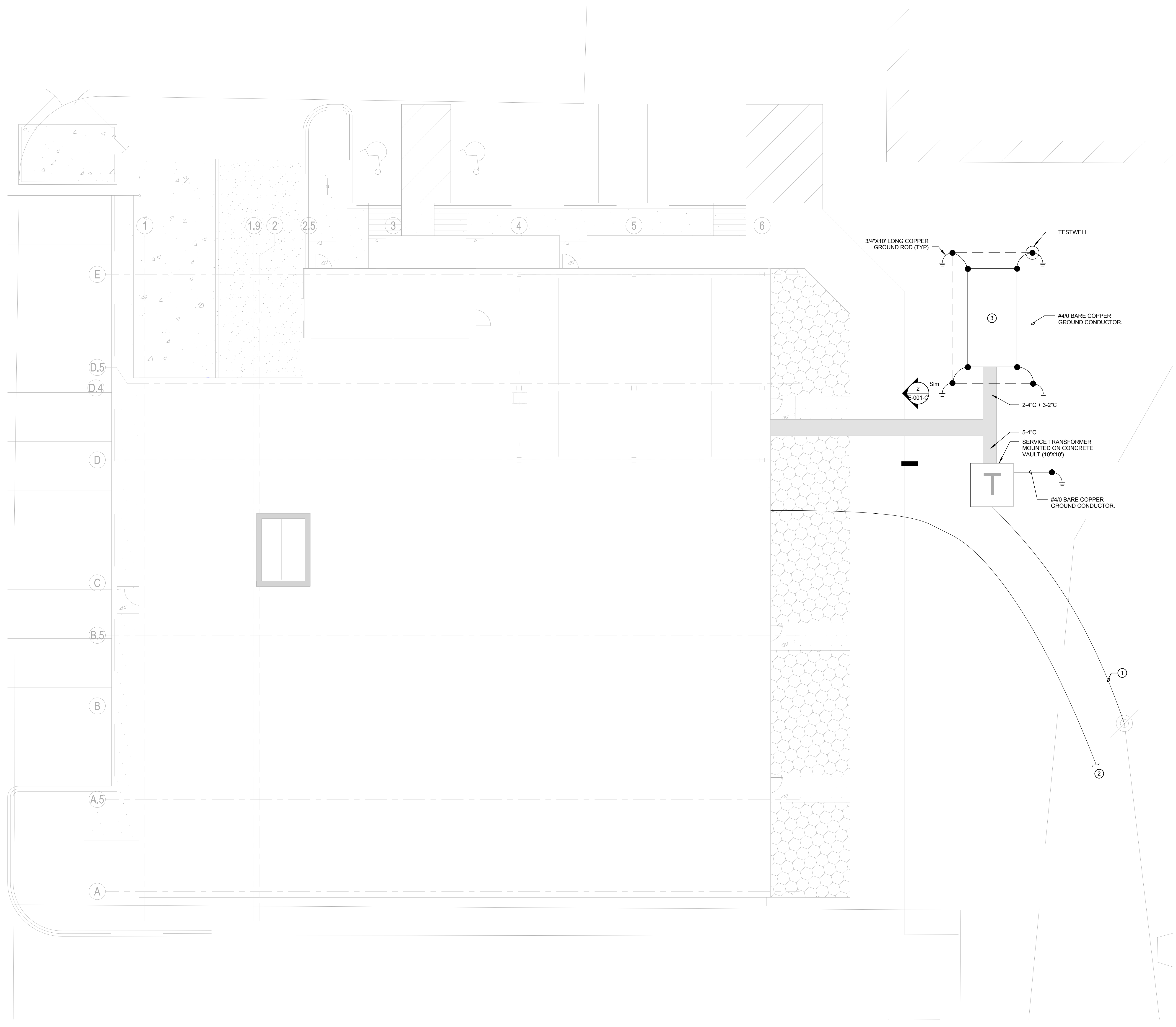


GENERAL NOTES

- SEE DRAWING E-800-C FOR GENERAL NOTES, ABBREVIATIONS, SYMBOLS AND FEEDER AND CIRCUIT SCHEDULES.
- SEE E-800-C FOR GROUNDING DETAILS.

KEYED NOTES

- UNDERGROUND MEDIUM VOLTAGE UTILITY FEEDER. FEEDER SHALL TRANSITION FROM POLE TO UNDERGROUND CONCRETE ENCASED DUCT BANK (4" C). COORDINATE WITH UTILITY FOR WIRE SIZE.
- 2-4" C FROM NEAREST TELEPHONE MANHOLE/POLE. COORDINATE WITH TELECOM COMPANY FOR EXACT REQUIREMENTS.
- FURNISH AND INSTALL 3500W NATURAL GAS GENERATOR ON CONCRETE PAD. COORDINATE EXACT PLACEMENT OF CONDUIT STUB UPS WITH GENERATOR SHOP DRAWINGS.



- 5 - SETS - 4-600 KCMIL + 1-250 KCMILG - 4" C
- 2 - SETS - 4-350 KCMIL + 1#1G - 4" C
- #1 + 1#6G - 2" C (GENERATOR AUX POWER)
- 1#14 + 1#14G - 2" C (GENERATOR STARTER SIGNAL AND ALARMS)
- 4 - CAT6 CABLE - 2" C (GENERATOR REMOTE ANNUNCIATOR)

2 DUCT BANK DETAIL
 12" = 1'-0"

1 ELECTRICAL SITE PLAN
 1/8" = 1'-0"

Revision	By	App'd	DD.MMA.YYYY
0 - INTERIOR FIT-OUT - ISSUED FOR CONSTRUCTION			08/19/2016
PACKAGE C - INTERIOR FIT-OUT			08/19/2016
PACKAGE B - SUPERSTRUCTURE & SHELL			08/05/2016
PACKAGE A - FOUNDATIONS & BELOW SLAB			07/22/2016
Issued			DD.MMA.YYYY

Permit-Seal



Client/Project
 IMMUCELL

Lot 11 - Second Tee Business Park
 1039 Riverside Street
 Portland, Maine 04103

Title
 ELECTRICAL SITE PLAN

Project No.
 191504176

Scale
 As indicated

Revision
 0

Drawing No.
E-001-C



2016/05/14 10:10 PM C:\pwork\191504176\191504176_elec_immucell_191504176.rvt
 PLOT DATE: 08/19/2016

ORIGINAL SHEET: A40 E (6 of 47)