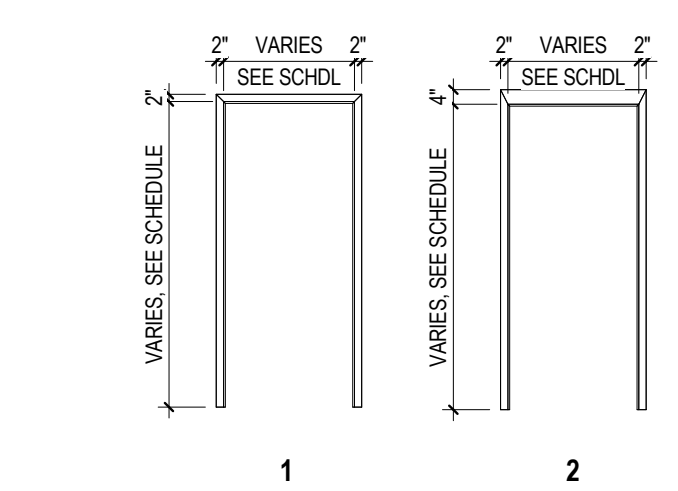


**GENERAL NOTES**

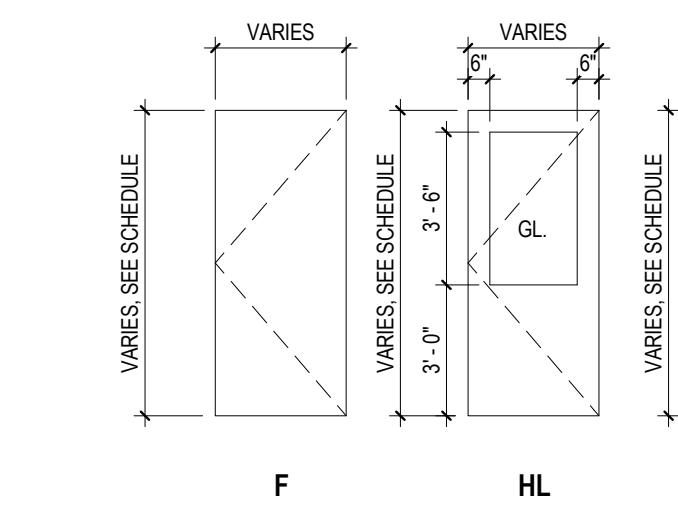
1. REFER TO ABBREVIATIONS, SYMBOLS AND GENERAL NOTES ON DRAWING A-601-B FOR ADDITIONAL INFORMATION.

NO.	ROOM NAME	RM. NO.	DOOR				FRAME				DETAILS			FIRE LABEL	HDWR	COMMENTS				
			CLEAR DIM		NO. OF PANELS	PANEL WIDTH		THICKNESS	TYPE	MATL.	FINISH	TYPE	MATL.				FINISH	HEAD DETAIL	JAMB DETAIL	SILL DETAIL
			WIDTH	HEIGHT		PANEL 1 WIDTH	PANEL 2 WIDTH													
<b>FIRST FLOOR</b>																				
101-A	SHIPPING / RECEIVING	101	8'-0"	9'-0"	1	8'-0"	9'-0"	2"	COH	INS STL	FAFI	-	STL	EPX PNT	5 / A-601-B	4 / A-601-B	-	-	1	
101-B	SHIPPING / RECEIVING	101	12'-0"	10'-0"	1	12'-0"	10'-0"	2"	COH	INS STL	FAFI	-	STL	EPX PNT	5 / A-601-B	4 / A-601-B	-	-	1	
101-C	SHIPPING / RECEIVING	101	3'-0"	7'-0"	1	3'-0"	7'-0"	1 3/4"	NL	HM	EPX PNT	2	STL	EPX PNT	11 / A-601-B	2 / A-601-B	11 / A-601-B	-	5	
101-D	SHIPPING / RECEIVING	101	8'-0"	8'-0"	1	8'-0"	8'-0"	0"	COO	STL	FAFI	-	STL	EPX PNT	8 / A-601-B	10 / A-601-B	-	-	1	
104-A	LIFT	104	3'-0"	7'-0"	1	3'-0"	7'-0"	1 3/4"	NL	HM	EPX PNT	2	HM	EPX PNT	11 / A-601-B	2 / A-601-B	11 / A-601-B	60 MIN	15	
105-A	ENTRY	105	3'-0"	7'-0"	1	3'-0"	7'-0"	1 3/4"	NL	HM	EPX PNT	1	HM	EPX PNT	8 / A-601-B	7 / A-601-B	-	-	2	
105-B	ENTRY	105	3'-0"	7'-0"	1	3'-0"	7'-0"	1 3/4"	NL	HM	EPX PNT	2	HM	EPX PNT	11 / A-601-B	2 / A-601-B	11 / A-601-B	60 MIN	3	
105-C	ENTRY	105	3'-0"	7'-0"	1	3'-0"	7'-0"	1 3/4"	NL	HM	EPX PNT	2	HM	EPX PNT	11 / A-601-B	2 / A-601-B	11 / A-601-B	60 MIN	3	
112-A	MECHANICAL	112	3'-0"	7'-0"	1	3'-0"	7'-0"	1 3/4"	F	HM	EPX PNT	1	HM	EPX PNT	8 / A-601-B	7 / A-601-B	-	-	4	
112-B	MECHANICAL	112	8'-0"	8'-0"	1	8'-0"	8'-0"	2"	COH	INS STL	FAFI	-	STL	EPX PNT	5 / A-601-B	4 / A-601-B	-	-	1	
112-C	MECHANICAL	112	8'-0"	8'-0"	1	8'-0"	8'-0"	2"	COH	INS STL	FAFI	-	STL	EPX PNT	5 / A-601-B	4 / A-601-B	-	-	1	
112-D	MECHANICAL	112	6'-0"	7'-0"	2	3'-0"	3'-0"	1 3/4"	F	HM	EPX PNT	2	HM	EPX PNT	11 / A-601-B	2 / A-601-B	11 / A-601-B	60 MIN	10	
112-E	MECHANICAL	112	6'-0"	7'-0"	2	3'-0"	3'-0"	1 3/4"	F	HM	EPX PNT	2	HM	EPX PNT	11 / A-601-B	2 / A-601-B	11 / A-601-B	60 MIN	9	
113-A	RO ROOM	113	4'-0"	7'-0"	1	4'-0"	7'-0"	1 3/4"	F	HM	EPX PNT	2	HM	EPX PNT	11 / A-601-B	2 / A-601-B	-	-	5	
113-B	RO ROOM	113	3'-0"	7'-0"	1	3'-0"	7'-0"	1 3/4"	F	HM	EPX PNT	1	HM	EPX PNT	8 / A-601-B	7 / A-601-B	-	-	4	
114-A	QUARANTINE	114	4'-0"	7'-0"	1	4'-0"	7'-0"	1 3/4"	F	HM	EPX PNT	2	HM	EPX PNT	11 / A-601-B	2 / A-601-B	-	-	6	
115-A	CAUSTIC / ACID STORAGE	115	4'-0"	7'-0"	1	4'-0"	7'-0"	1 3/4"	F	HM	EPX PNT	2	HM	EPX PNT	11 / A-601-B	2 / A-601-B	-	-	6	
116-A	SOLVENT STORAGE	116	6'-0"	7'-0"	2	3'-0"	3'-0"	1 3/4"	F	HM	EPX PNT	2	HM	EPX PNT	11 / A-601-B	2 / A-601-B	11 / A-601-B	120 MIN	8	
121-A	CORRIDOR	121	3'-0"	7'-0"	1	3'-0"	7'-0"	1 3/4"	F	HM	EPX PNT	2	HM	EPX PNT	11 / A-601-B	2 / A-601-B	11 / A-601-B	120 MIN	7	
121-B	CORRIDOR	121	3'-0"	7'-0"	1	3'-0"	7'-0"	1 3/4"	F	HM	EPX PNT	1	HM	EPX PNT	8 / A-601-B	7 / A-601-B	-	-	4	
123-A	STAIR	123	3'-0"	7'-0"	1	3'-0"	7'-0"	1 3/4"	NL	HM	EPX PNT	2	HM	EPX PNT	11 / A-601-B	2 / A-601-B	11 / A-601-B	60 MIN	3	
123-B	STAIR	123	3'-0"	7'-0"	1	3'-0"	7'-0"	1 3/4"	F	HM	EPX PNT	1	HM	EPX PNT	8 / A-601-B	7 / A-601-B	-	-	2	
129-B	HAZARDOUS	129	3'-0"	7'-0"	1	3'-0"	7'-0"	1 3/4"	F	HM	EPX PNT	1	HM	EPX PNT	8 / A-601-B	7 / A-601-B	12 / A-601-B	-	11	
<b>SECOND FLOOR</b>																				
123-C	STAIR	123	3'-0"	7'-0"	1	3'-0"	7'-0"	1 3/4"	NL	HM	EPX PNT	2	HM	EPX PNT	11 / A-601-B	2 / A-601-B	11 / A-601-B	60 MIN	7	
207-A	STORAGE	207	6'-0"	7'-0"	2	3'-0"	3'-0"	1 3/4"	NL	HM	EPX PNT	2	HM	EPX PNT	11 / A-601-B	2 / A-601-B	11 / A-601-B	-	13	
209-A	MECHANICAL / ELECTRICAL	209	3'-0"	7'-0"	1	3'-0"	7'-0"	1 3/4"	F	HM	EPX PNT	2	HM	EPX PNT	11 / A-601-B	2 / A-601-B	11 / A-601-B	-	5	
209-B	MECHANICAL / ELECTRICAL	209	6'-0"	7'-0"	2	3'-0"	3'-0"	1 3/4"	F	HM	EPX PNT	2	HM	EPX PNT	11 / A-601-B	2 / A-601-B	11 / A-601-B	-	12	
209-C	MECHANICAL / ELECTRICAL	209	8'-0"	8'-0"	1	8'-0"	8'-0"	2"	COH	INS STL	FAFI	-	STL	EPX PNT	5 / A-601-B	4 / A-601-B	-	-	1	
214-A	VESTIBULE	214	3'-0"	7'-0"	1	3'-0"	7'-0"	1 3/4"	NL	HM	EPX PNT	2	HM	EPX PNT	11 / A-601-B	2 / A-601-B	11 / A-601-B	-	7	
214-B	VESTIBULE	214	3'-0"	7'-0"	1	3'-0"	7'-0"	1 3/4"	NL	HM	EPX PNT	2	HM	EPX PNT	11 / A-601-B	2 / A-601-B	11 / A-601-B	60 MIN	7	
<b>ROOF LP - T.O. STEEL</b>																				
106-A	STAIR	106	3'-0"	7'-0"	1	3'-0"	7'-0"	1 3/4"	F	HM	EPX PNT	1	HM	EPX PNT	8 / A-601-B	7 / A-601-B	-	-	14	
301-B	STORAGE	301	3'-0"	7'-0"	1	3'-0"	7'-0"	1 3/4"	F	HM	EPX PNT	2	HM	EPX PNT	11 / A-601-B	2 / A-601-B	11 / A-601-B	-	5	

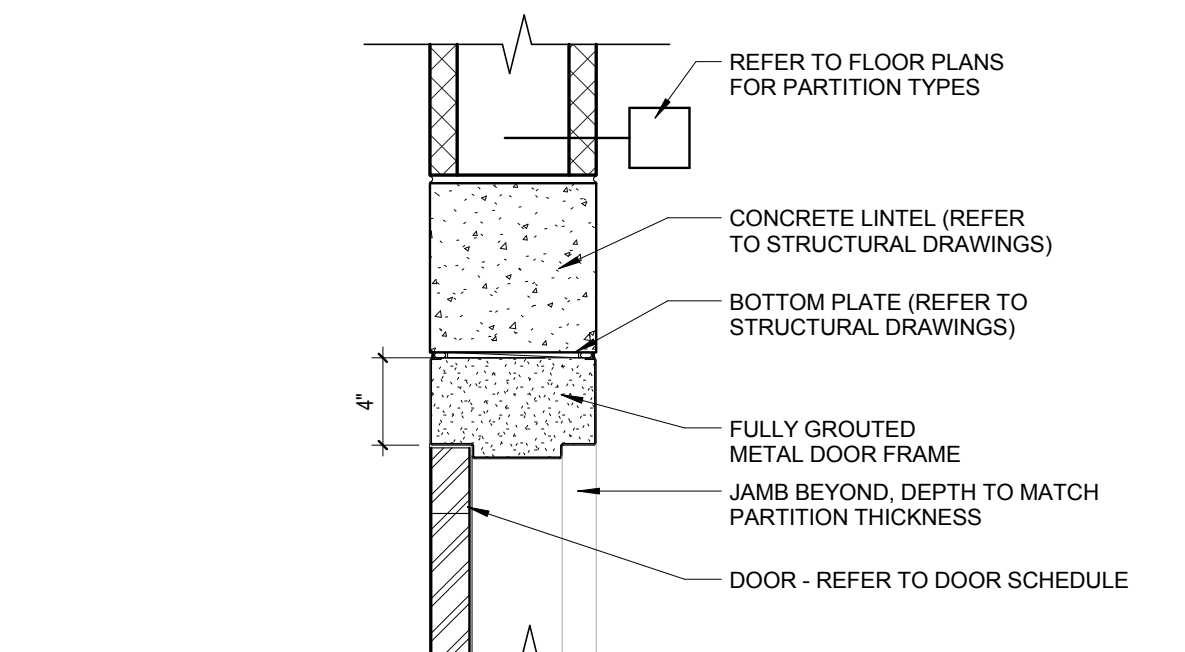
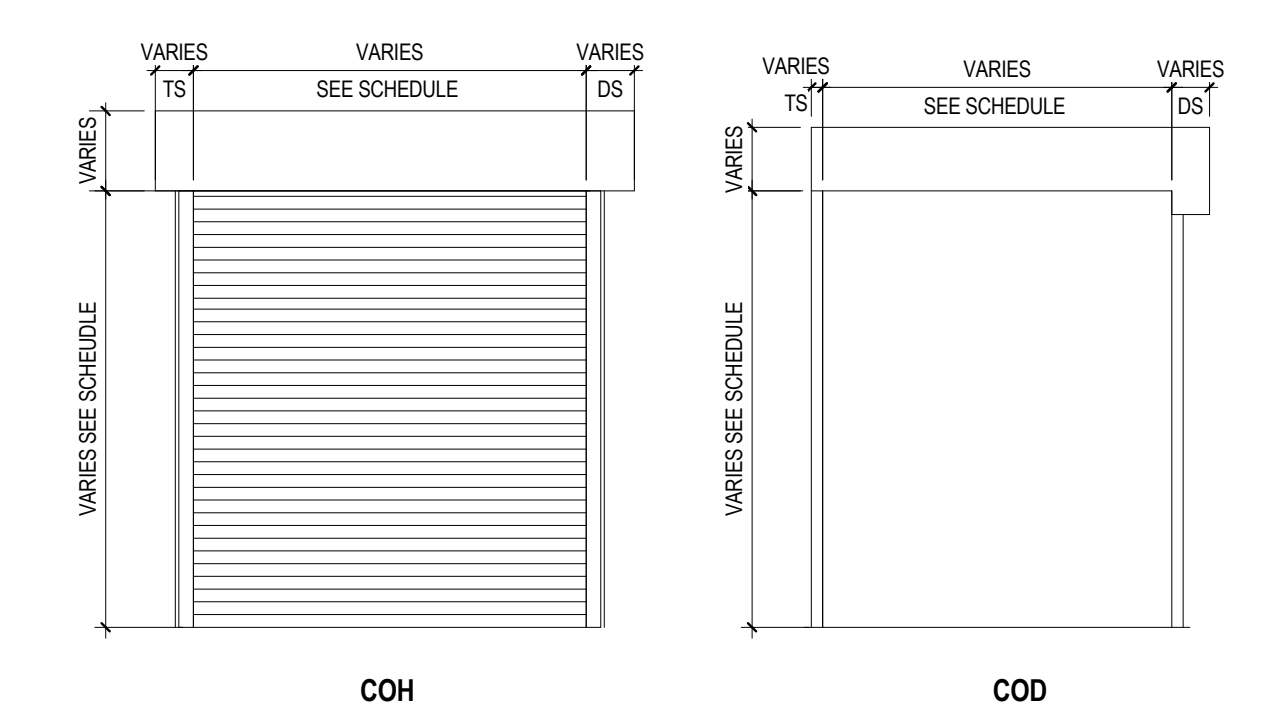
COMMENTS:  
1. PRESSURE BLAST RELIEF DOOR, FRAME, AND HARDWARE



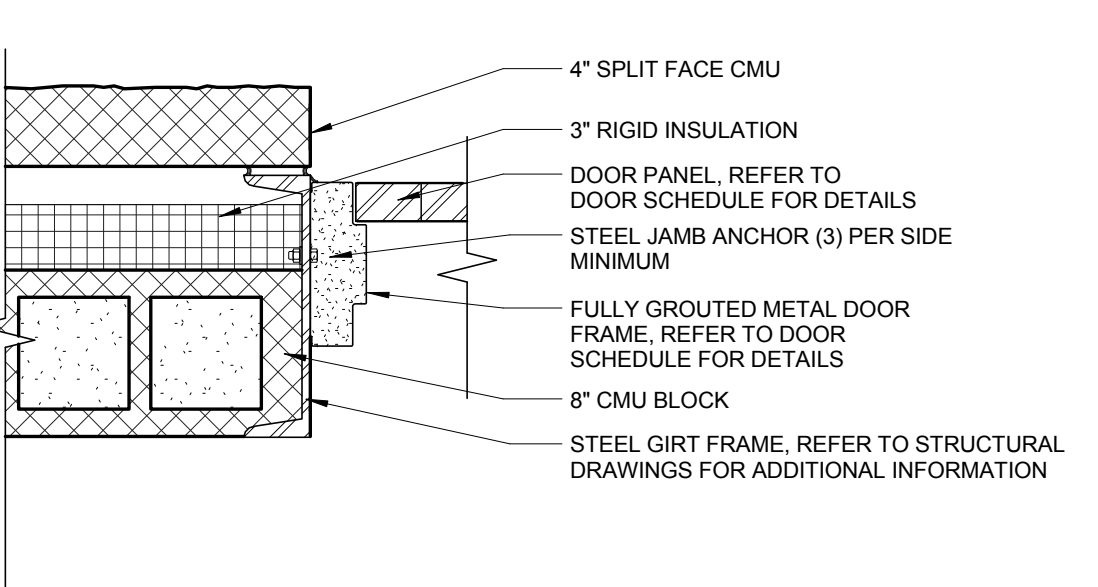
**DOOR FRAME TYPES**  
1/4" = 1'-0"



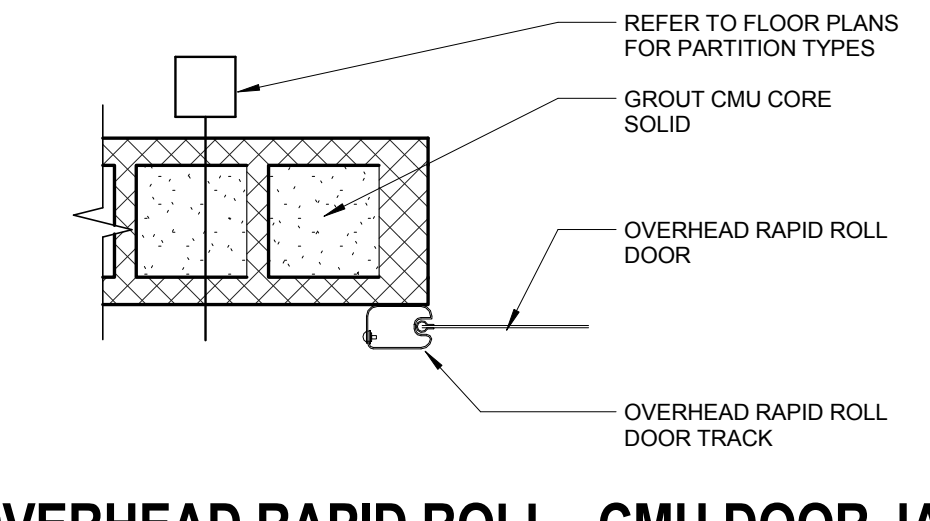
**DOOR PANEL TYPES**  
1/4" = 1'-0"



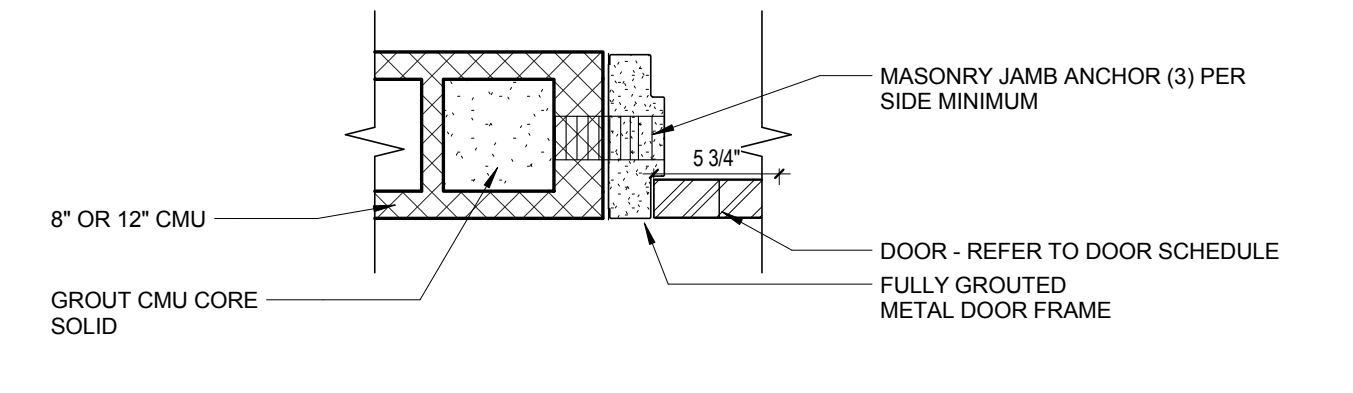
**1 FLUSH METAL FRAME - CMU DOOR HEAD**  
1/12" = 1'-0"



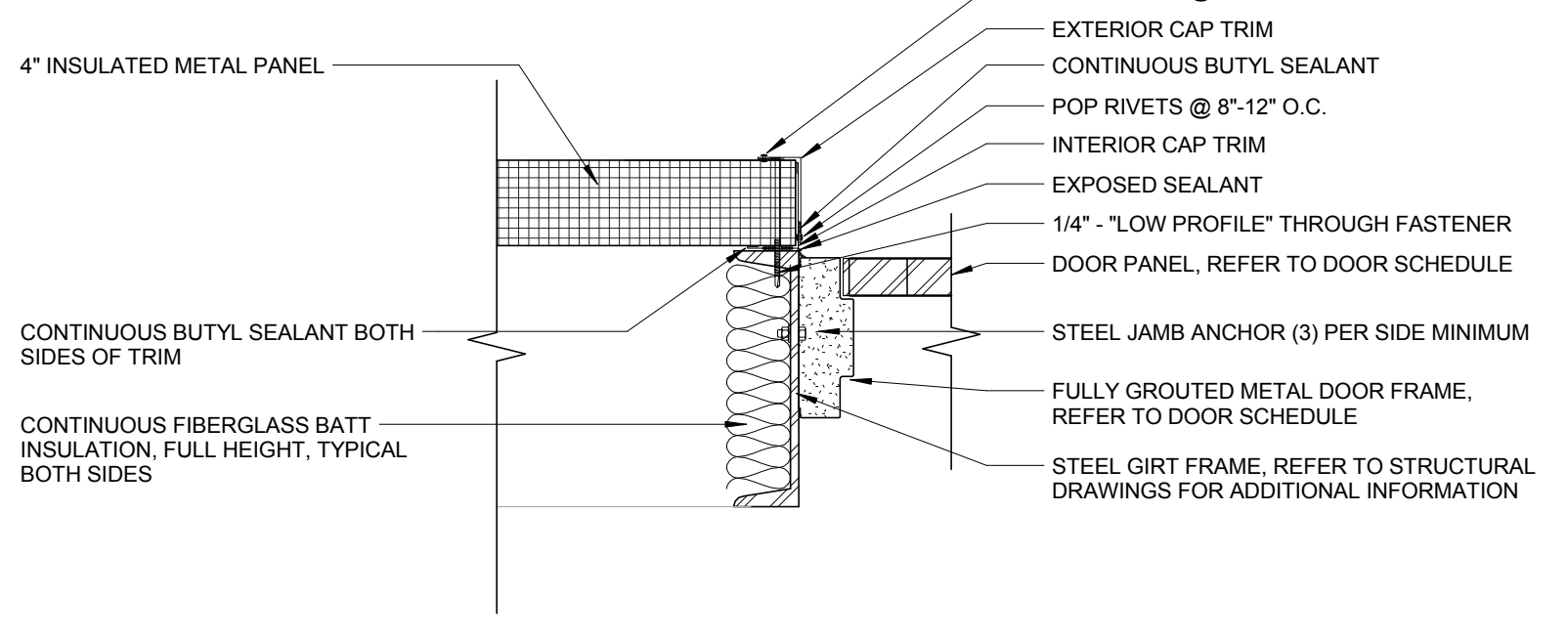
**6 EXTERIOR FRAME - SPLIT FACE DOOR JAMB (BELOW 32")**  
1/12" = 1'-0"



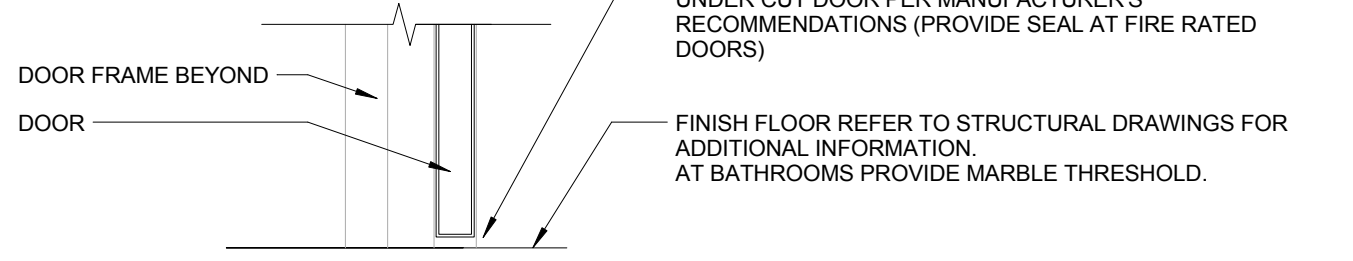
**10 OVERHEAD RAPID ROLL - CMU DOOR JAMB**  
1/12" = 1'-0"



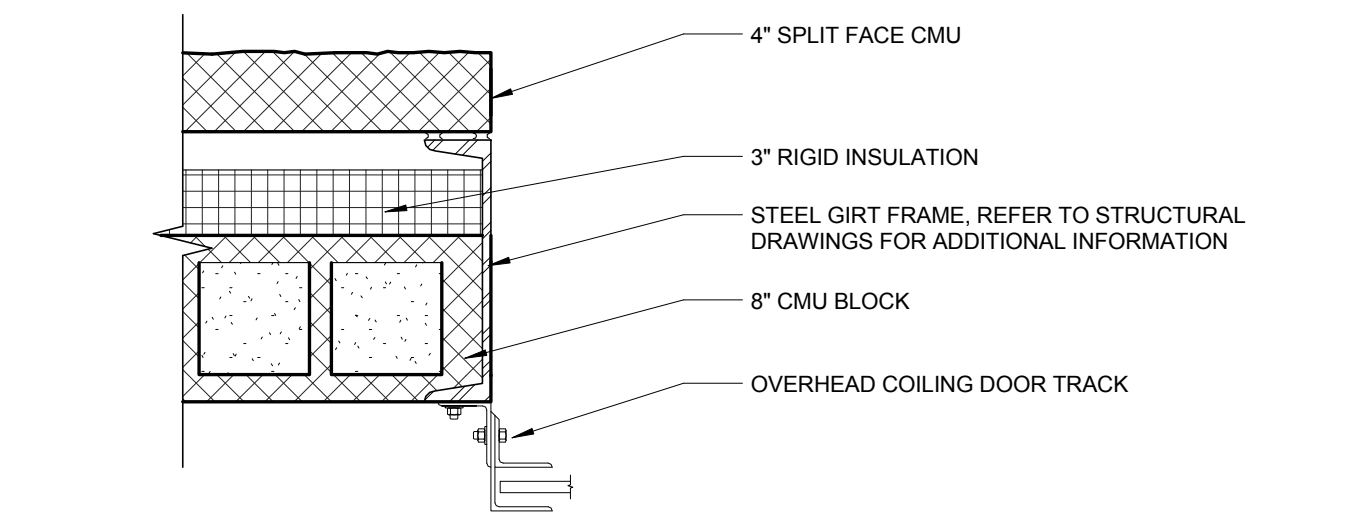
**2 FLUSH METAL FRAME - CMU DOOR JAMB**  
1/12" = 1'-0"



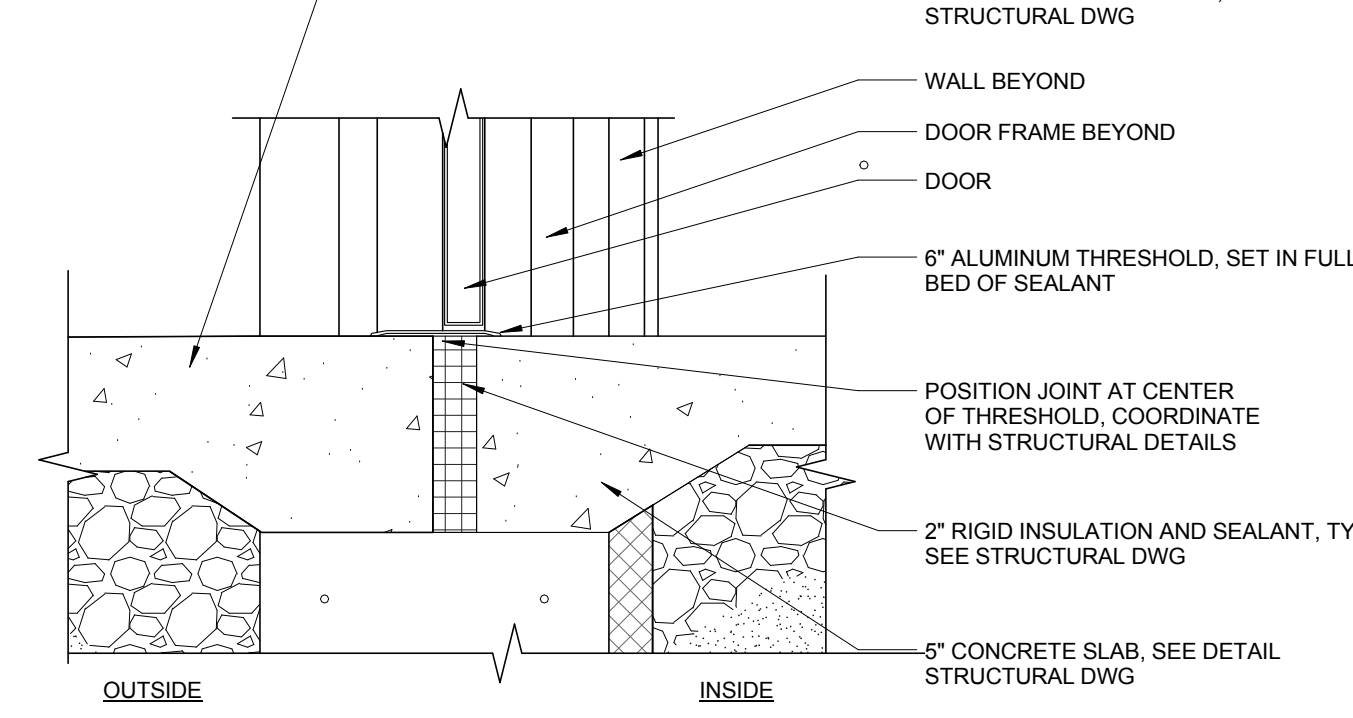
**7 EXTERIOR FRAME - METAL PANEL DOOR JAMB**  
1/12" = 1'-0"



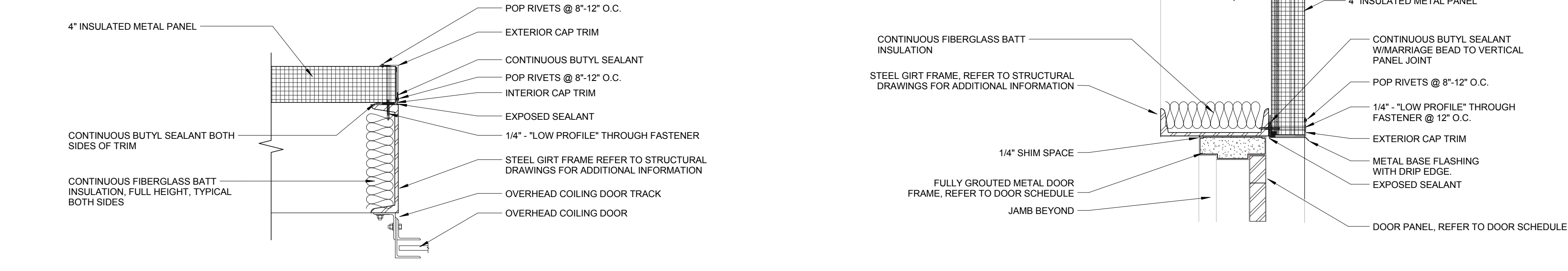
**11 DOOR THRESHOLD - INTERIOR**  
1/12" = 1'-0"



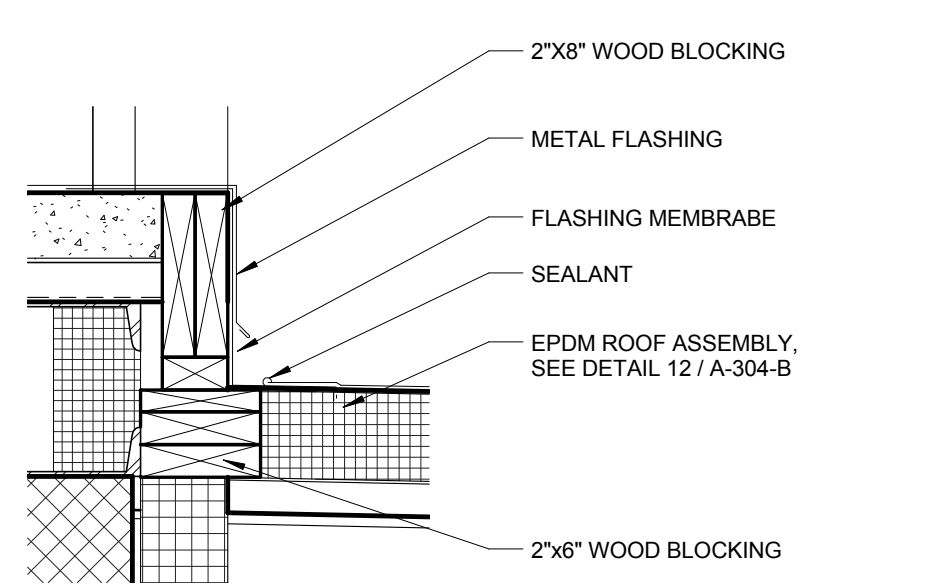
**3 OVERHEAD COILING - SPLIT FACE DOOR JAMB (BELOW 32")**  
1/12" = 1'-0"



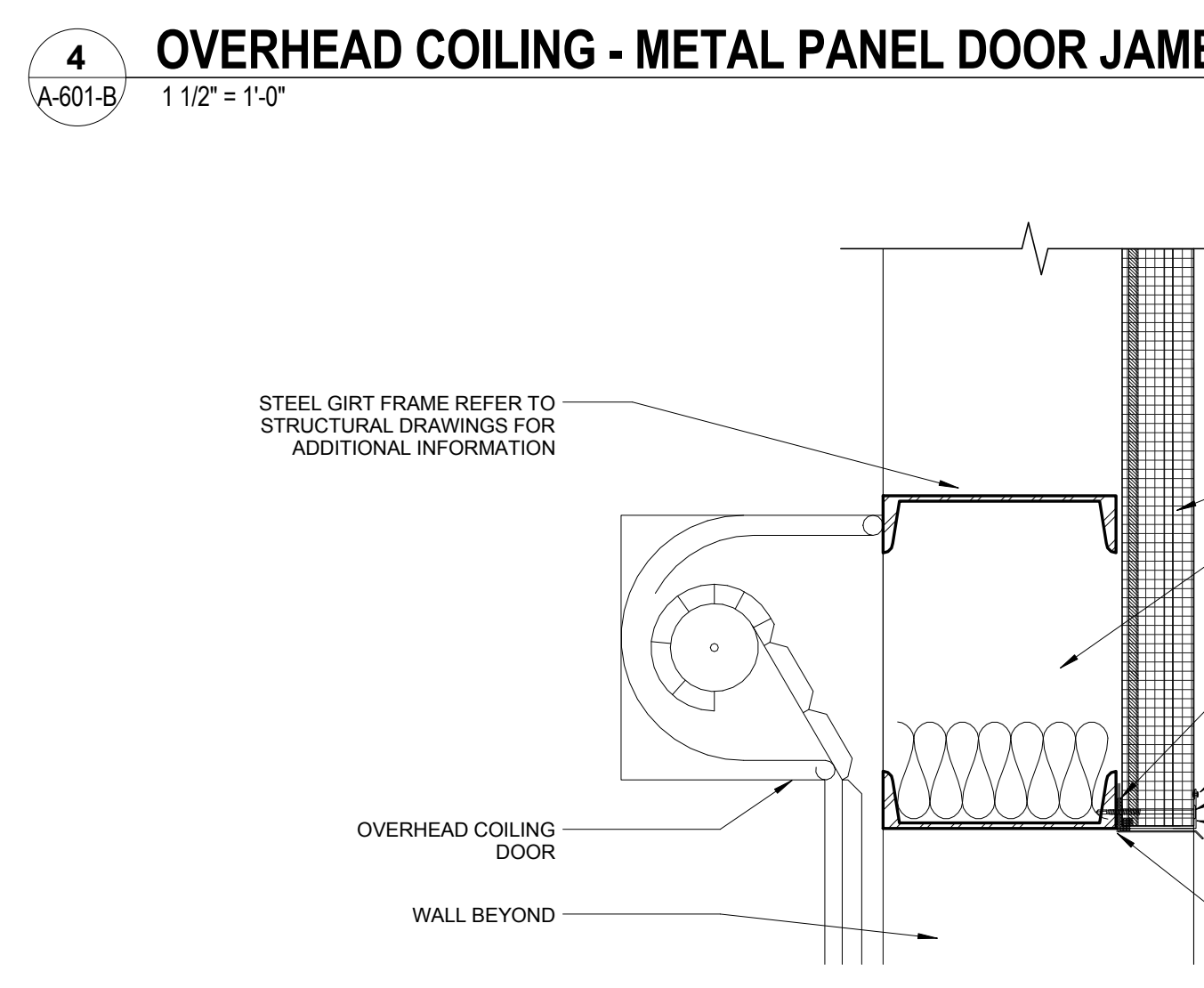
**12 EXTERIOR AIRLOCK DOOR THRESHOLD**  
1/12" = 1'-0"



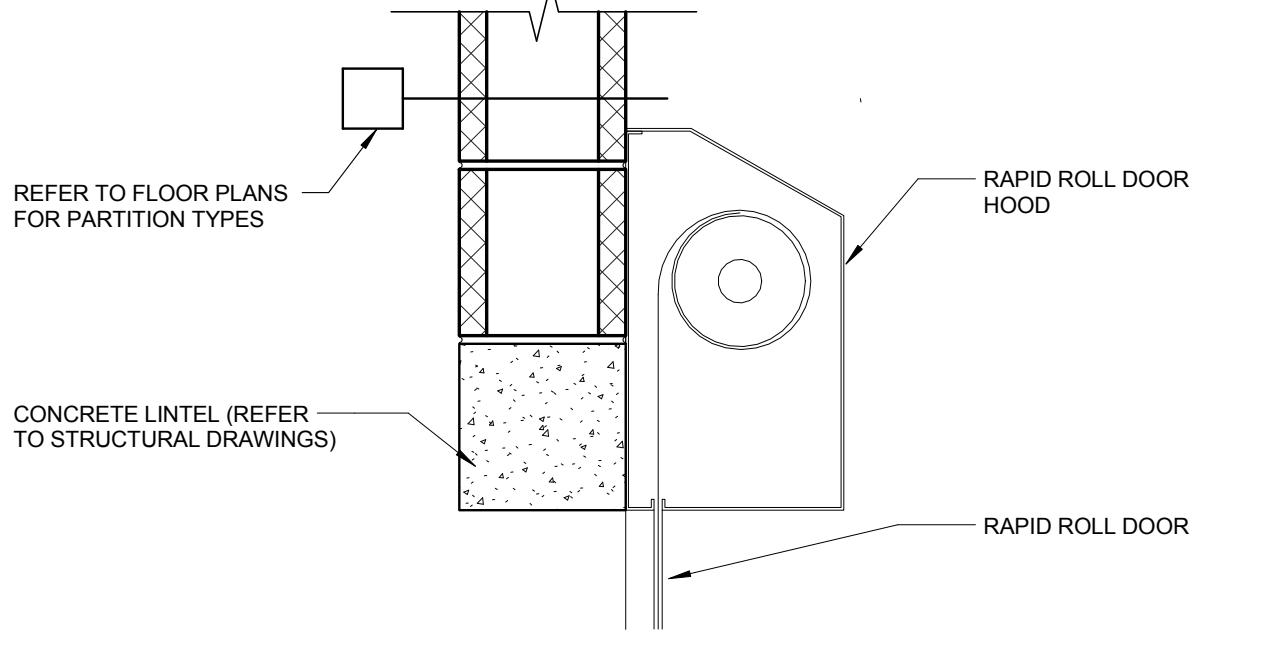
**8 EXTERIOR FRAME - METAL PANEL DOOR HEAD**  
1/12" = 1'-0"



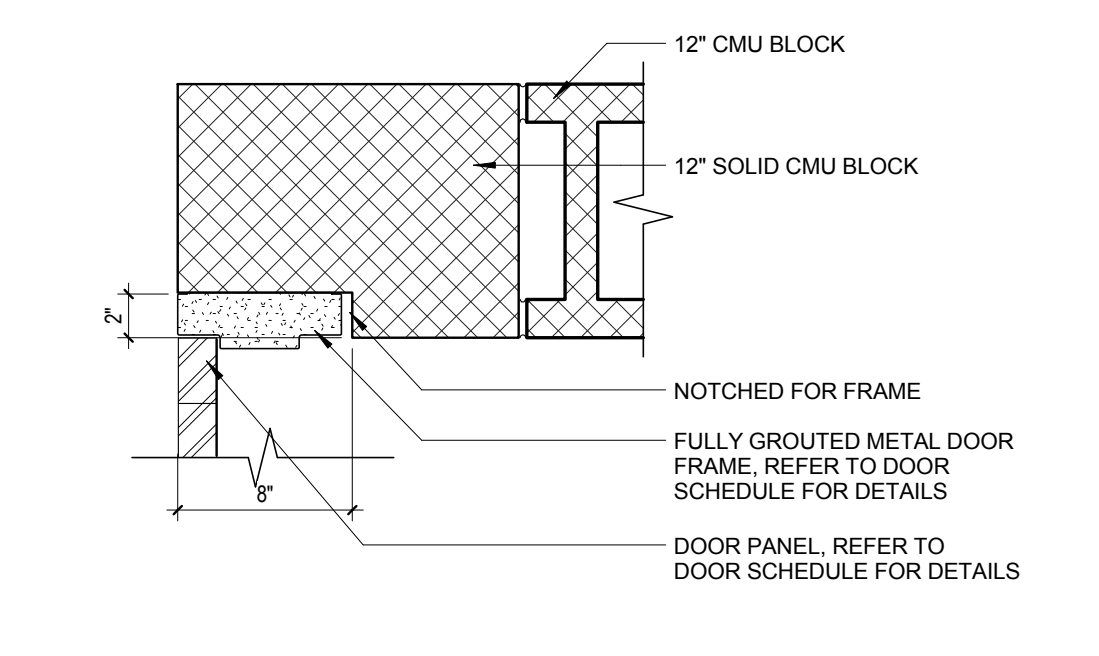
**13 THRESHOLD AT ROOF DOOR DETAIL**  
1/12" = 1'-0"



**5 OVERHEAD COILING - METAL PANEL DOOR JAMB**  
1/12" = 1'-0"

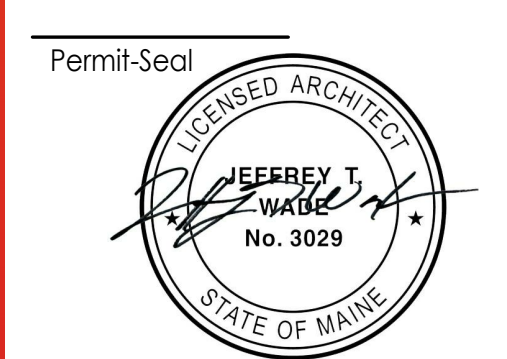


**9 OVERHEAD RAPID ROLL - CMU DOOR HEAD**  
1/12" = 1'-0"



**14 NOTCHED JAMB DETAIL**  
1/12" = 1'-0"

NO.	DESCRIPTION	ISSUED FOR	JOB	DATE
0	SUPERSTRUCTURE & SHELL - CONSTRUCTION	ISSUED FOR	JUL	08/05/2016
Revision				
1	PACKAGE C - INTERIOR FIT-OUT			08/19/2016
2	PACKAGE B - SUPERSTRUCTURE & SHELL			08/05/2016
3	PACKAGE A - FOUNDATIONS & BELOW SLAB			07/22/2016
ISSUED				



Client/Project  
**IMMUCELL**

Lot 11 - Second Tee Business Park  
1039 Riverside Street  
Portland, Maine 04103

Title  
**DOOR SCHEDULE AND DETAILS**

Project No. 191504176  
Scale As indicated  
Revision Drawing No.

0  
**A-601-B**

191504176-01.dwg (191504176) - 11/08/2016 10:00 AM  
 191504176-01.dwg (191504176) - 11/08/2016 10:00 AM  
 191504176-01.dwg (191504176) - 11/08/2016 10:00 AM