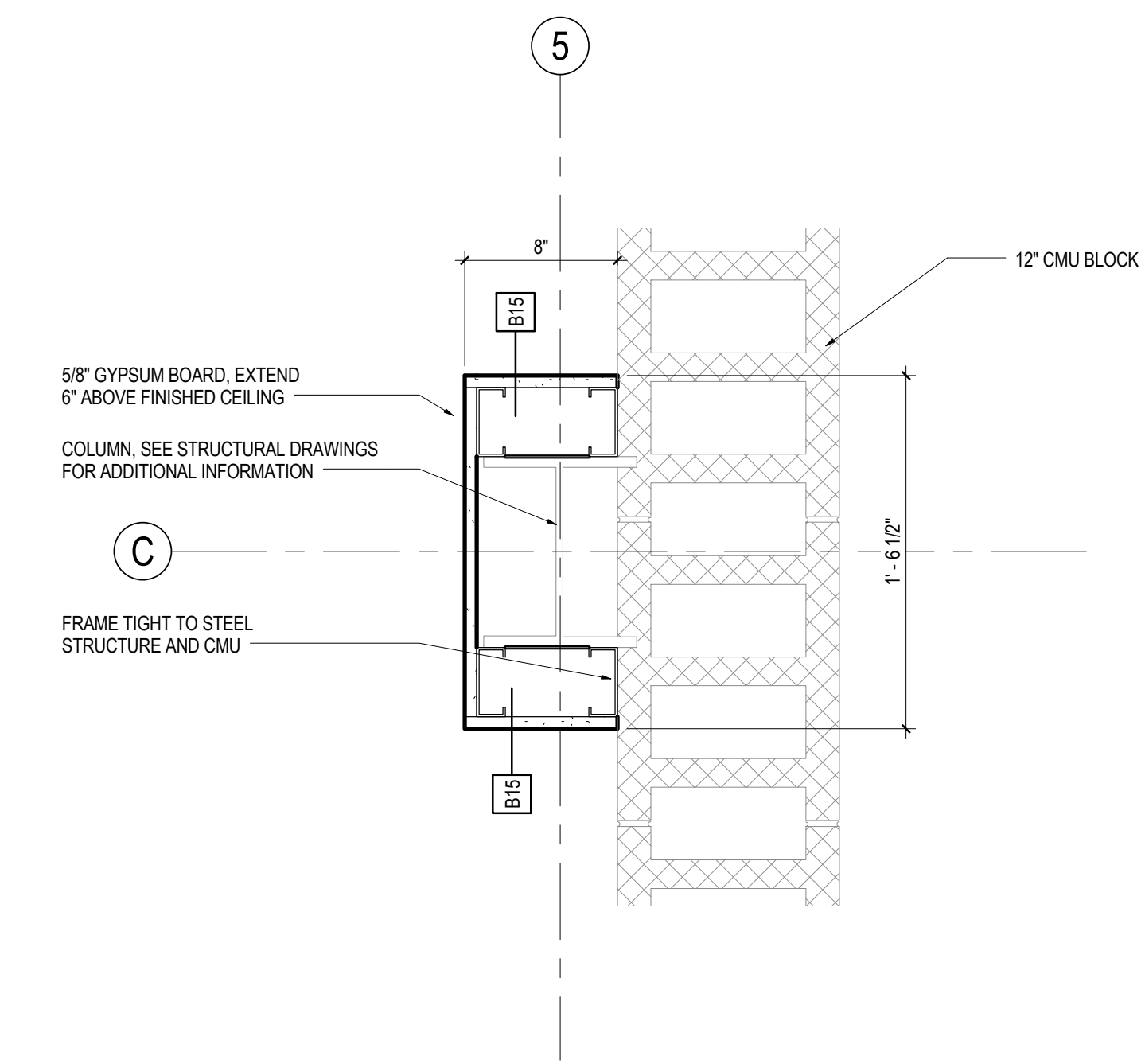
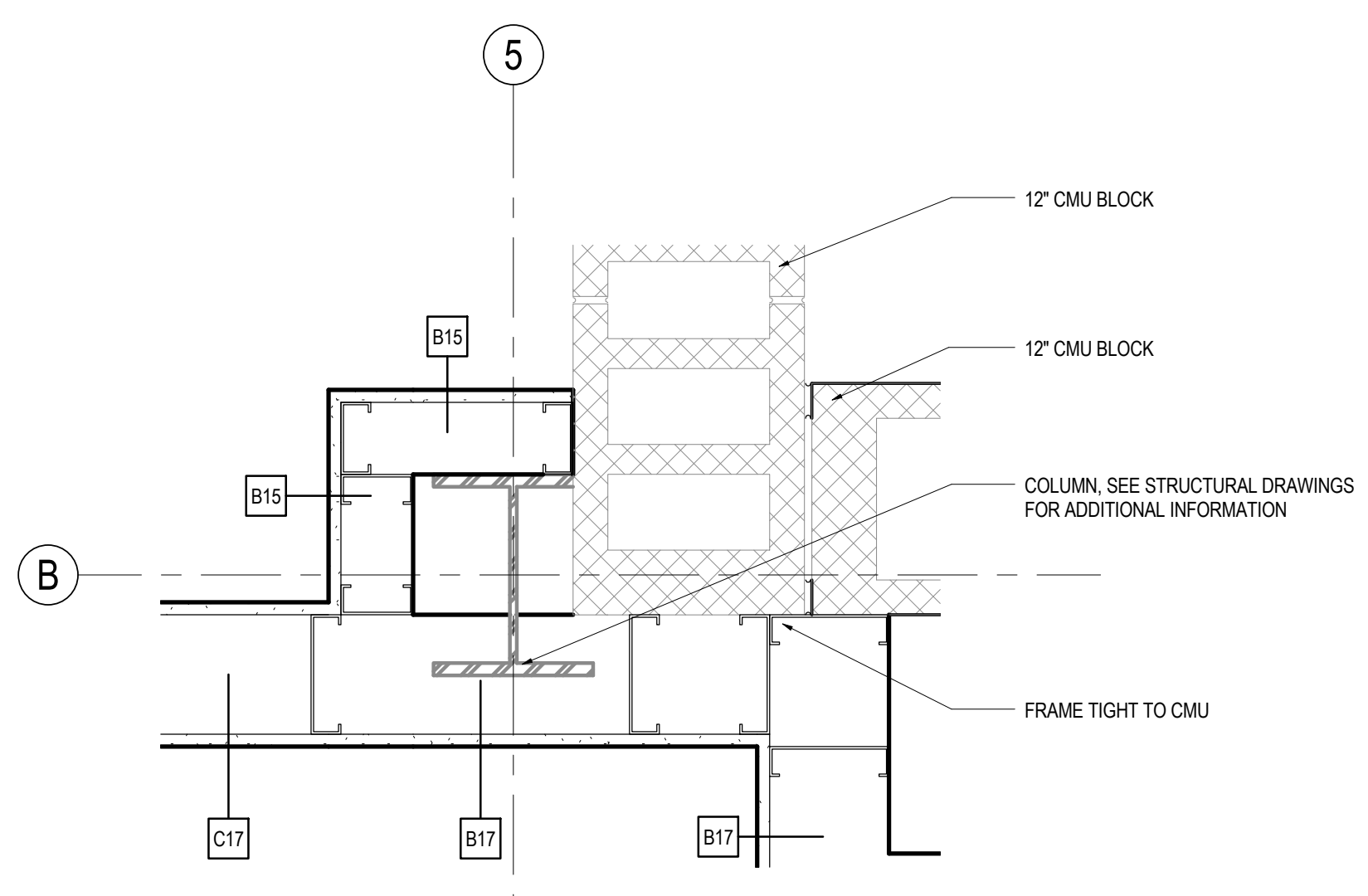
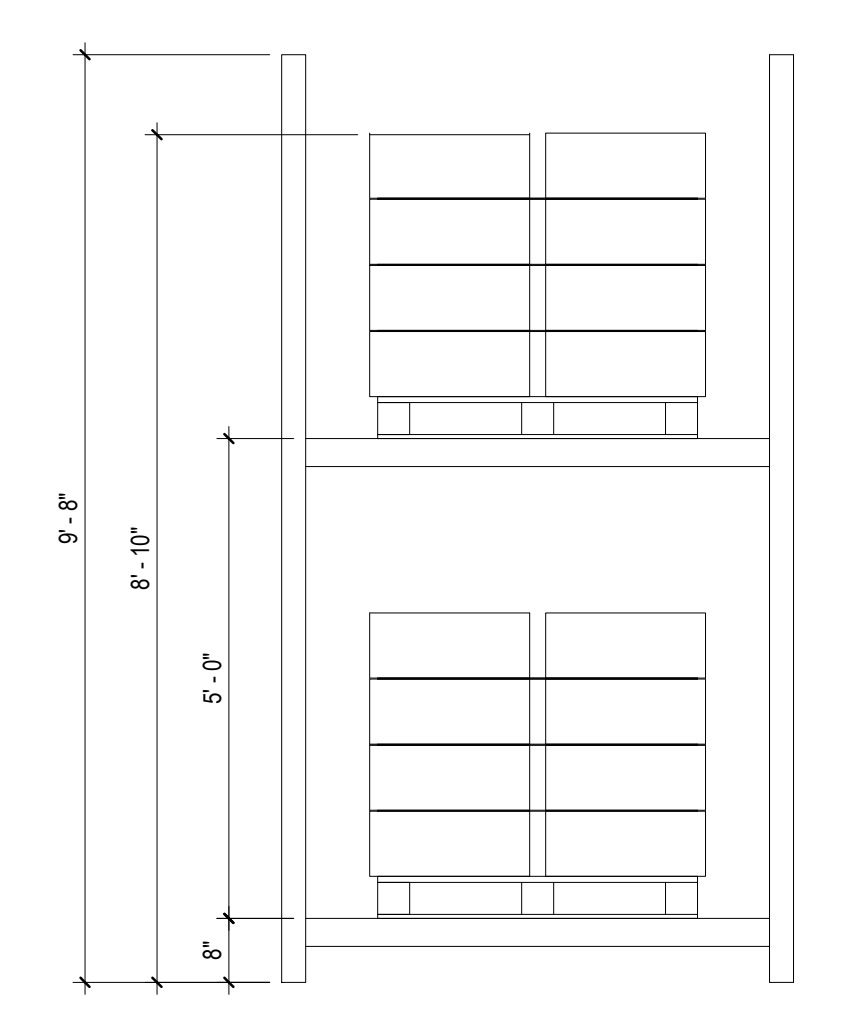
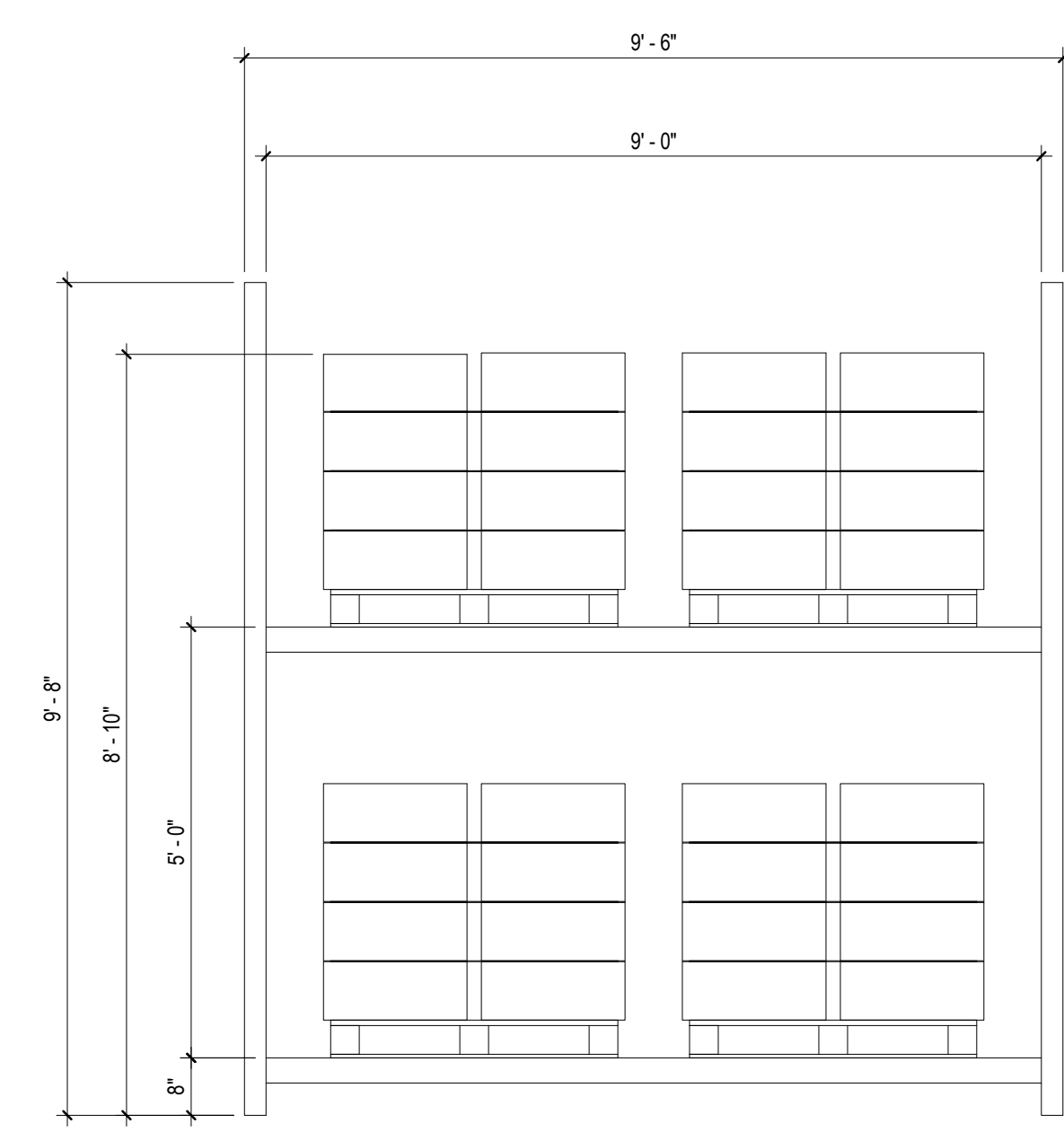
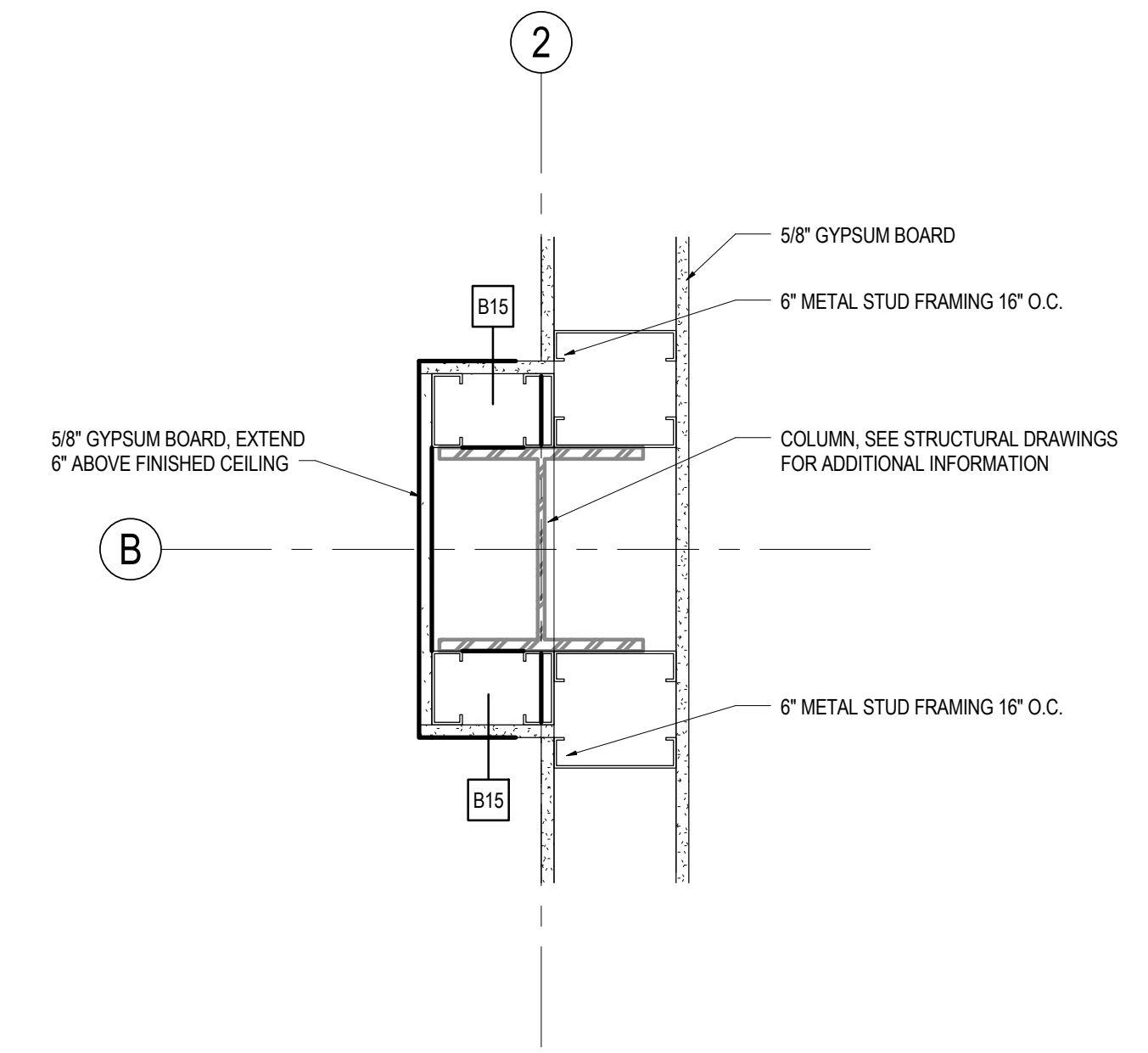
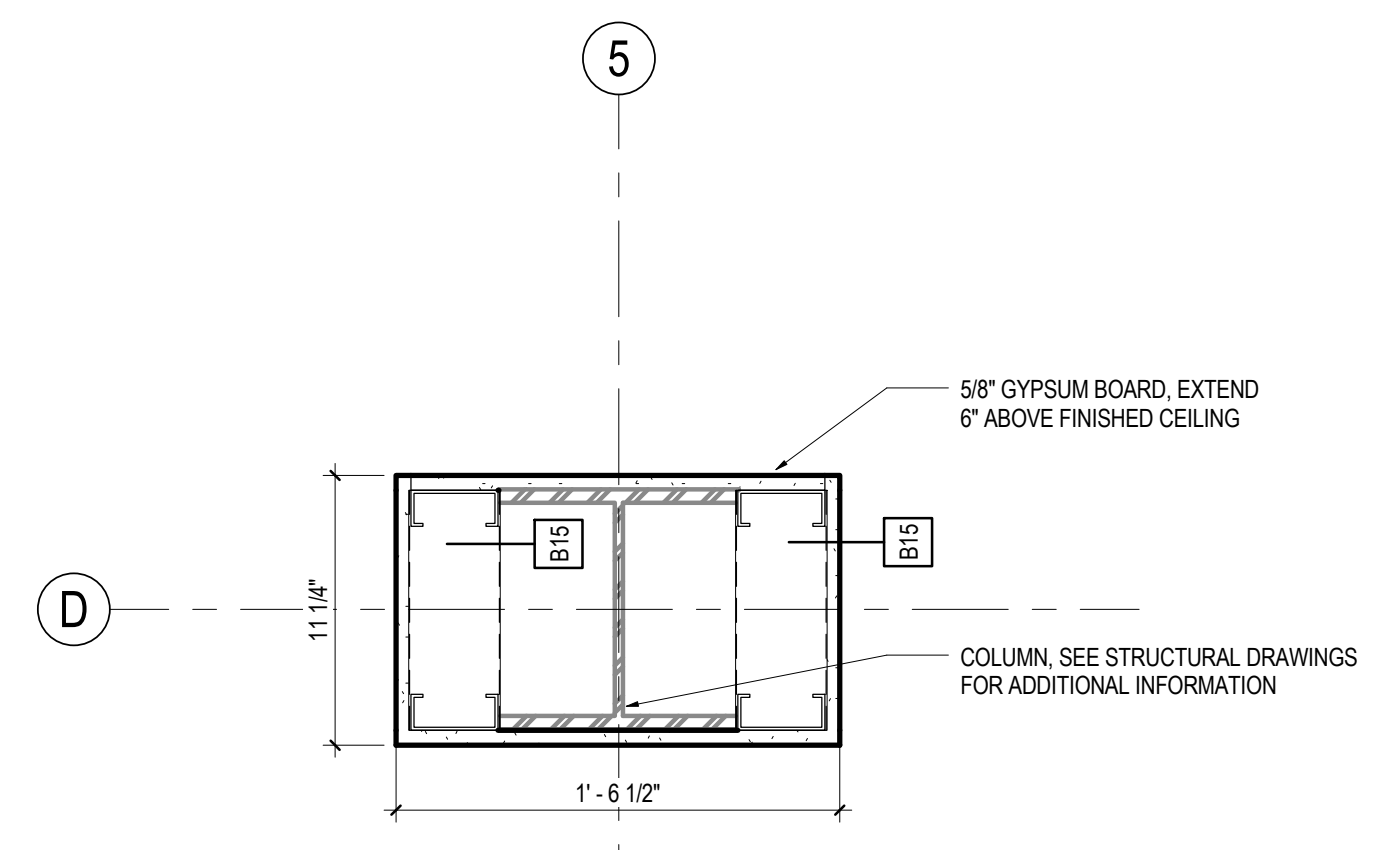
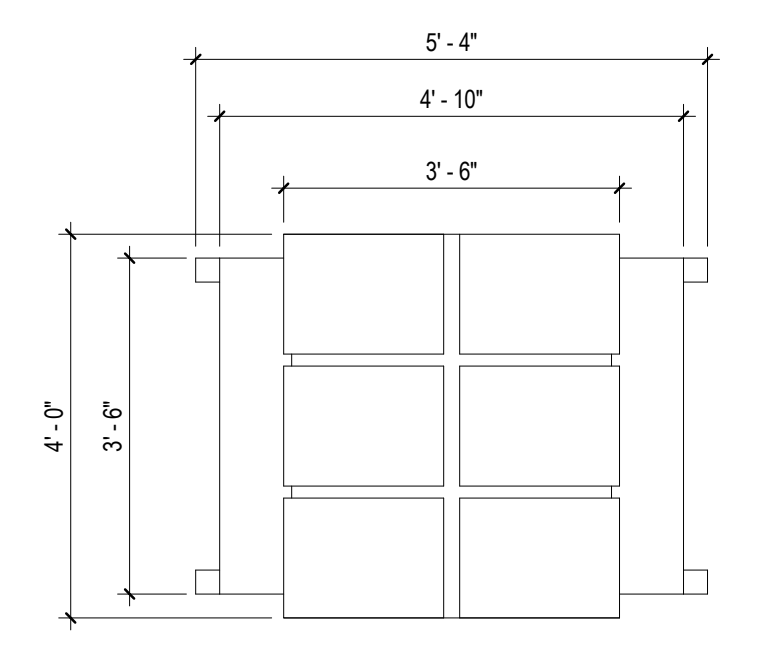
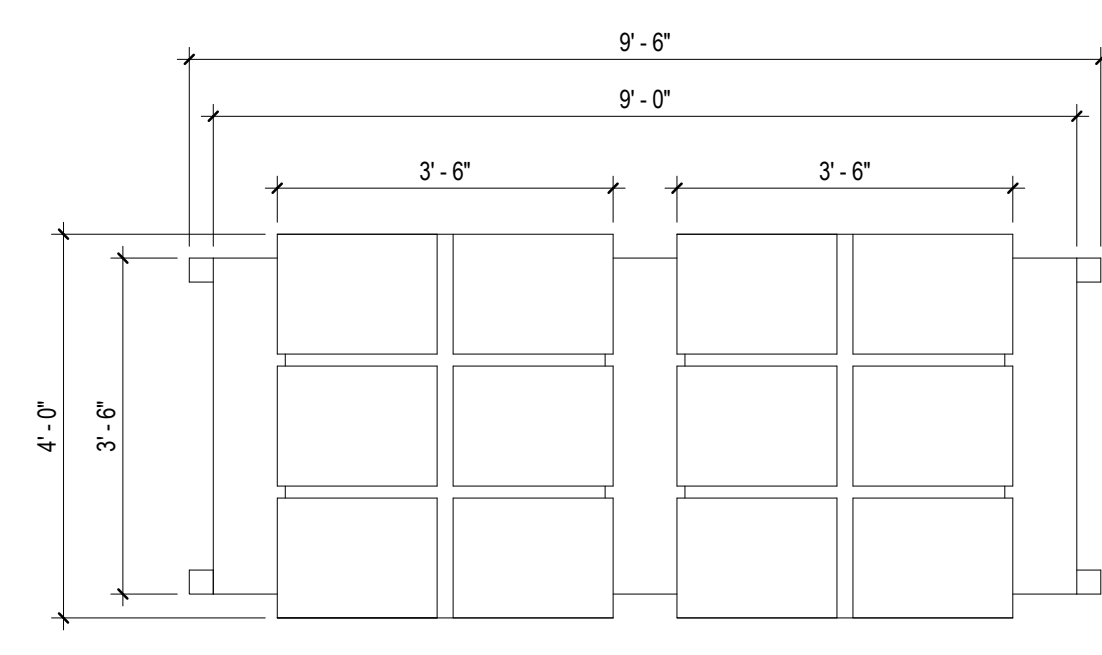


**GENERAL NOTES**

- REFER TO ABBREVIATIONS, SYMBOLS AND GENERAL NOTES ON DRAWING A-501-C FOR ADDITIONAL INFORMATION.



**PALLET RACK TYPE 1**

**PALLET RACK TYPE 2**

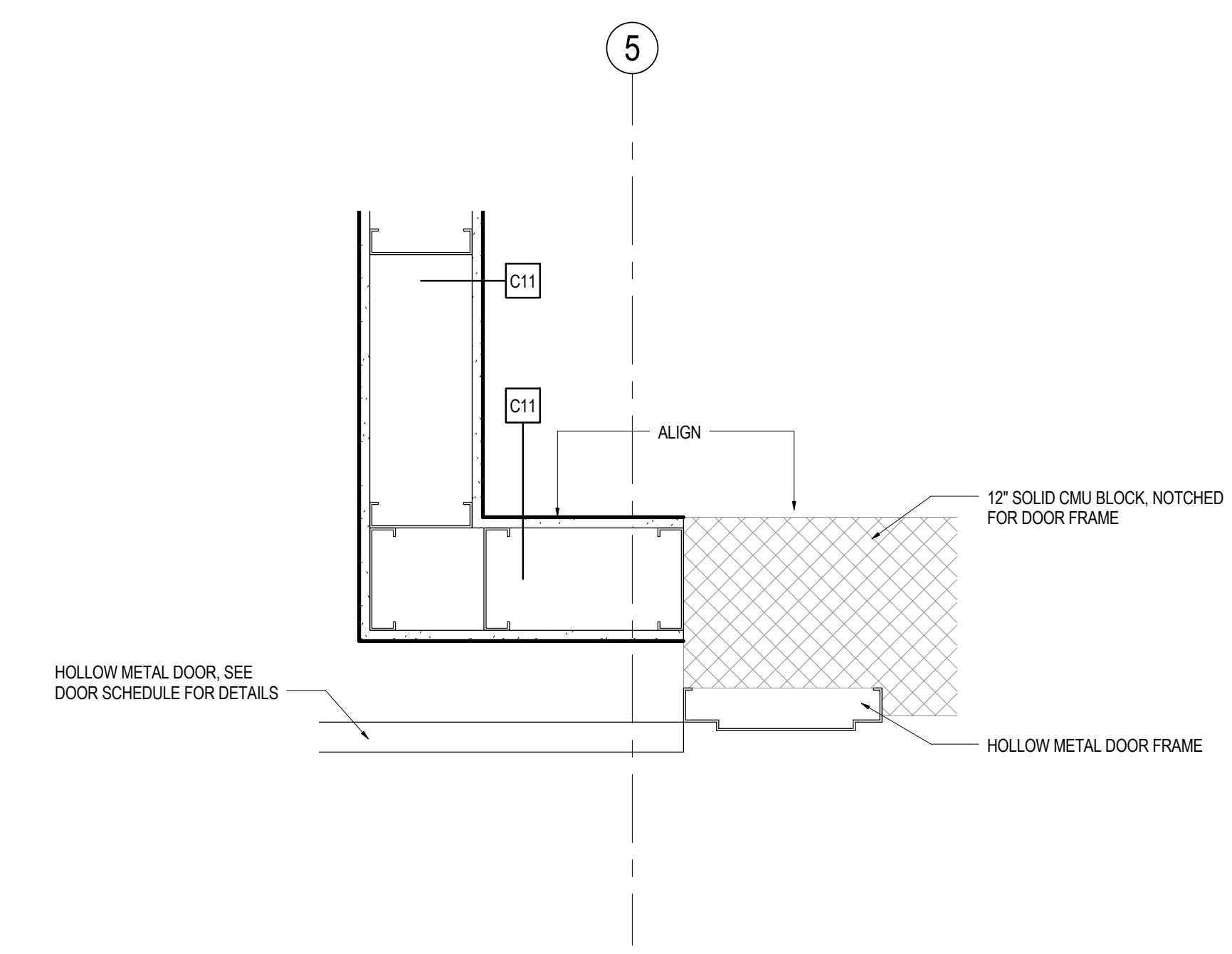
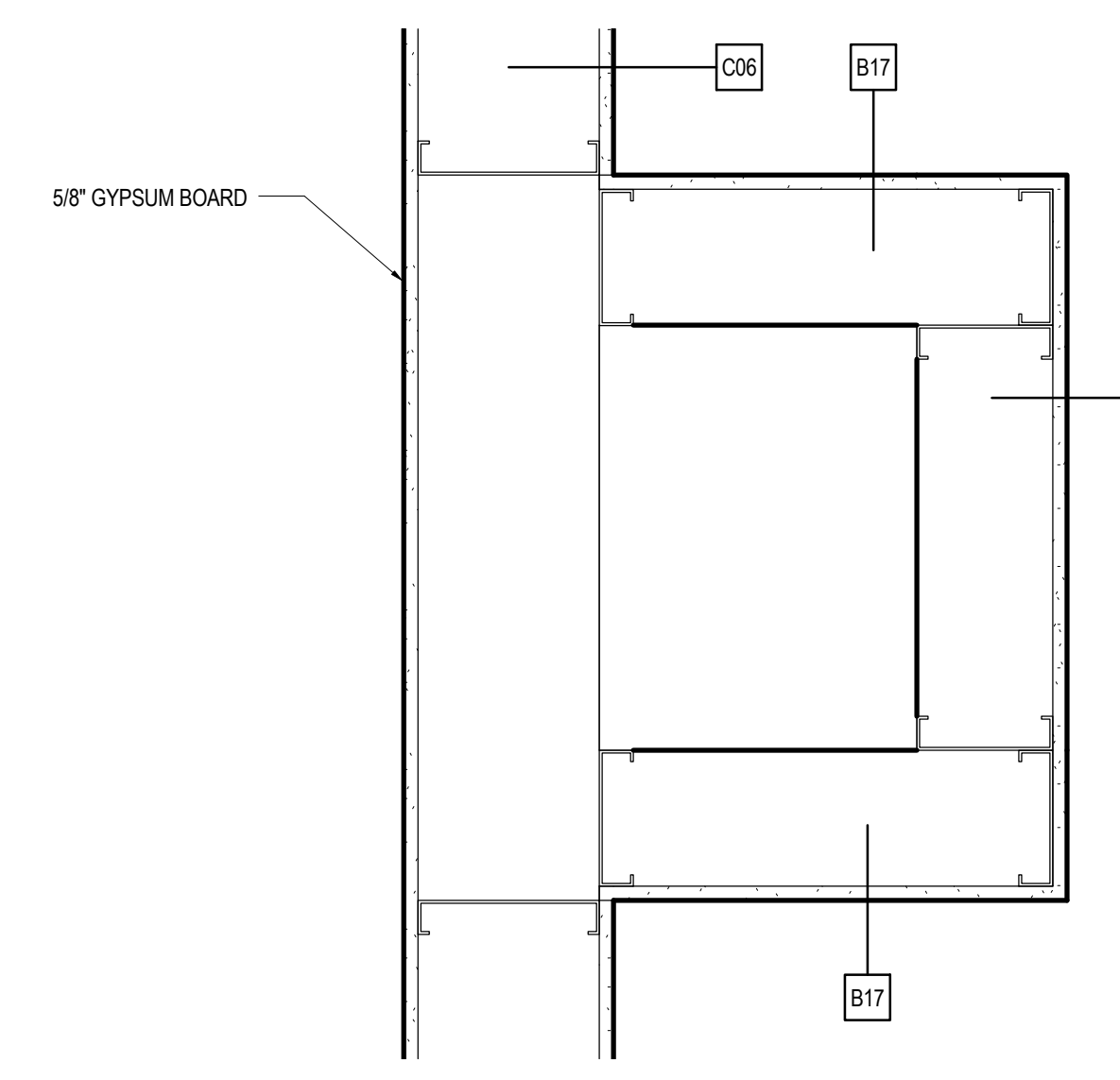
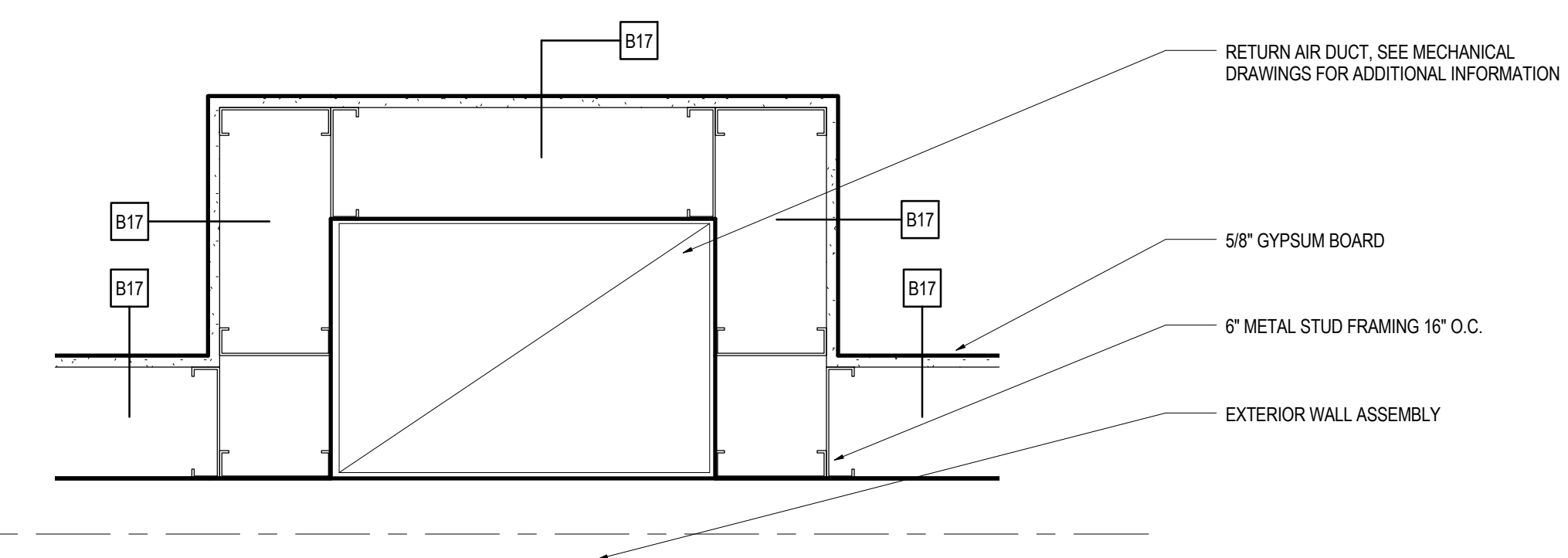
**2 COLUMN CHASE DETAIL, TYPICAL**  
1 1/2" = 1'-0"

**3 COLUMN CHASE B-2 DETAIL**  
1 1/2" = 1'-0"

**4 COLUMN B-5 CHASE DETAIL**  
1 1/2" = 1'-0"

**5 COLUMN C-5 DETAIL**  
1 1/2" = 1'-0"

**1 RACK DETAILS**  
1/2" = 1'-0"



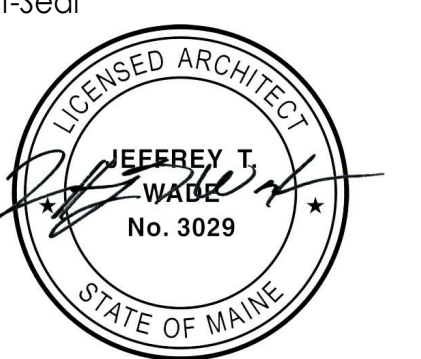
**6 LOW WALL DUCT CHASE DETAIL, TYPICAL ON EXTERIOR WALL**  
1 1/2" = 1'-0"

**7 LOW WALL DUCT CHASE DETAIL @ FIRE WALL**  
1 1/2" = 1'-0"

**8 METAL STUD WALL TO CMU DETAIL**  
1 1/2" = 1'-0"

Revision	By	App'd	MM.DD.YYYY
0 - INTERIOR FIT-OUT - ISSUED FOR CONSTRUCTION	J.R.	K.J.M.	08/19/2016
PACKAGE C - INTERIOR FIT-OUT			08.19.2016
PACKAGE B - SUPERSTRUCTURE & SHELL			08.05.2016
PACKAGE A - FOUNDATIONS & BELOW SLAB			07.22.2016
Issued	By	App'd	MM.DD.YYYY

Permit-Seal



Client/Project  
**IMMUCELL**

Lot 11 - Second Tee Business Park  
1039 Riverside Street  
Portland, Maine 04103

Title  
**DETAILS**

Project No.  
191504176

Scale  
As indicated

Revision  
0

Drawing No.  
**A-503-C**