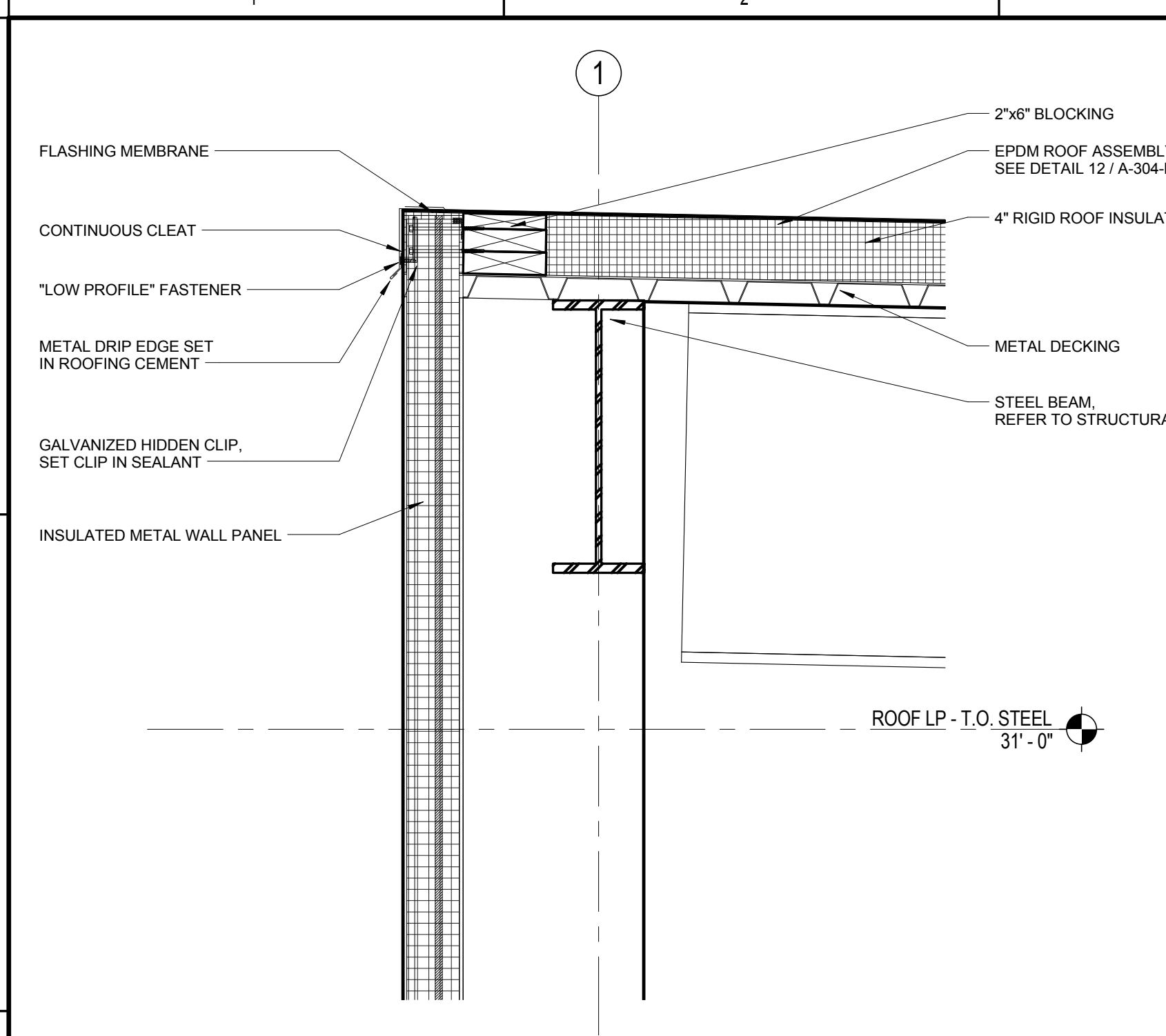
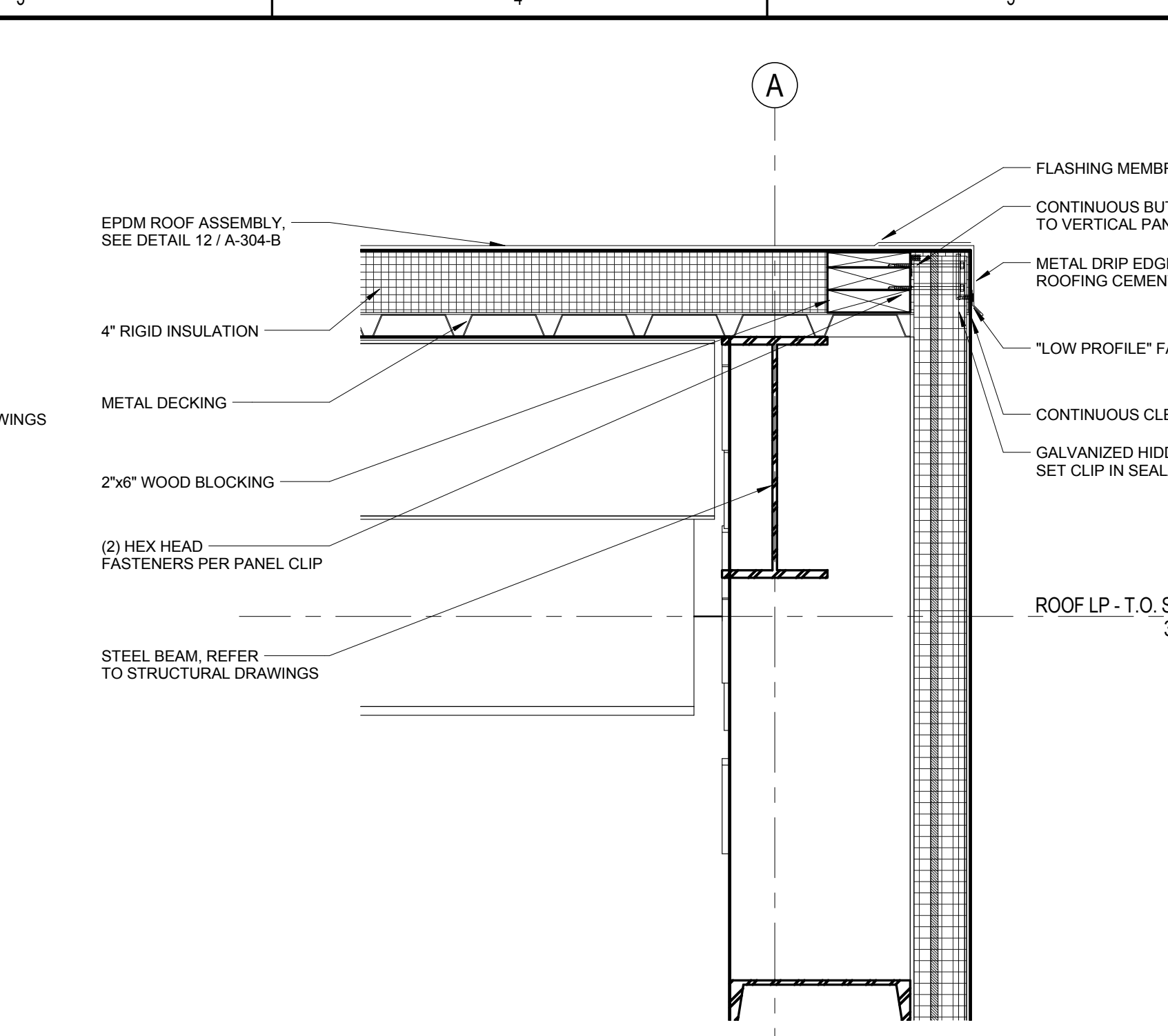


GENERAL NOTES

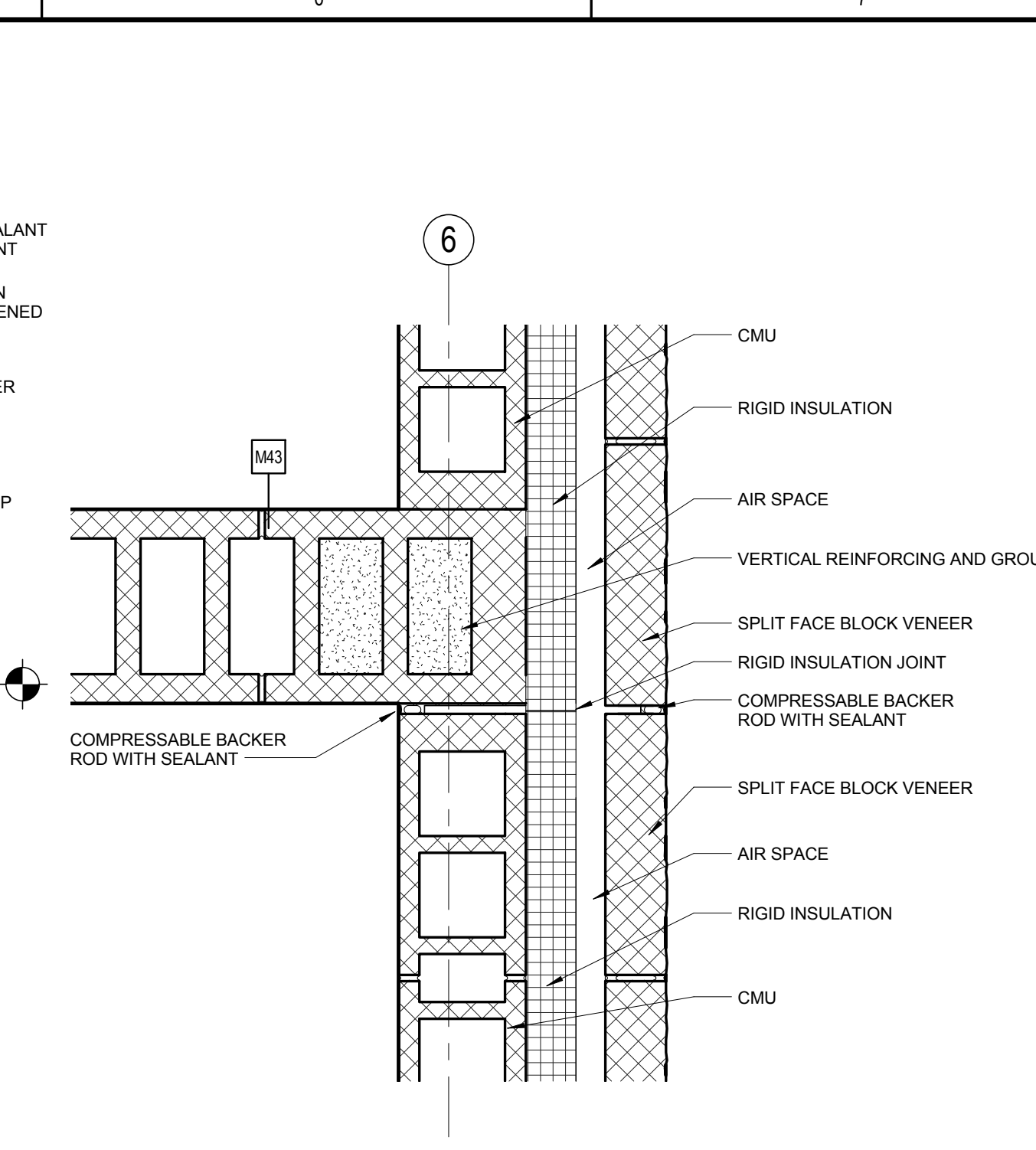
- REFER TO ABBREVIATIONS, SYMBOLS AND GENERAL NOTES ON DRAWING A-301-B FOR ADDITIONAL INFORMATION.



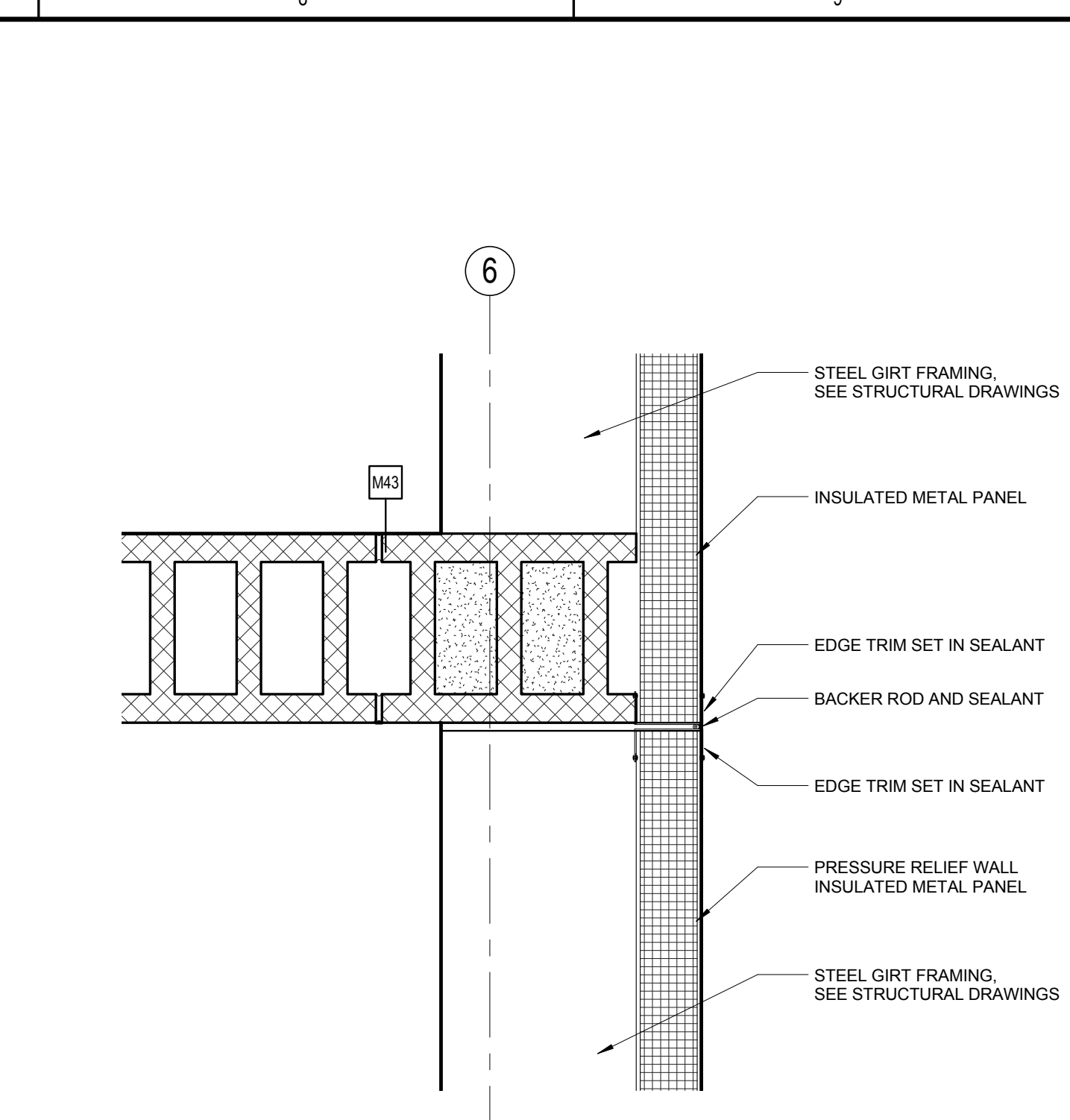
1 ROOF EDGE DETAIL
A-304-B 1 1/2" = 1'-0"



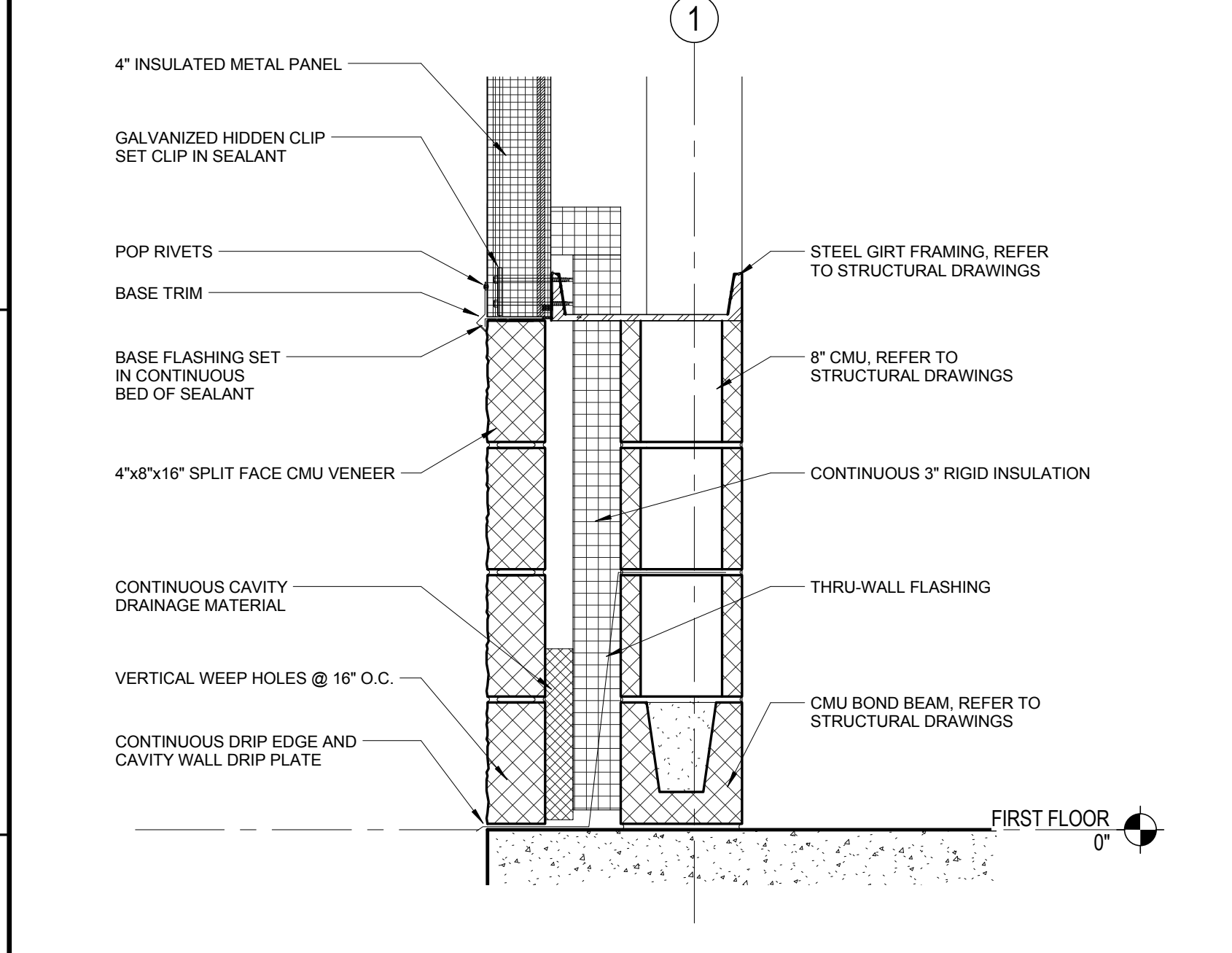
2 ROOF EDGE DETAIL 2
A-304-B 1 1/2" = 1'-0"



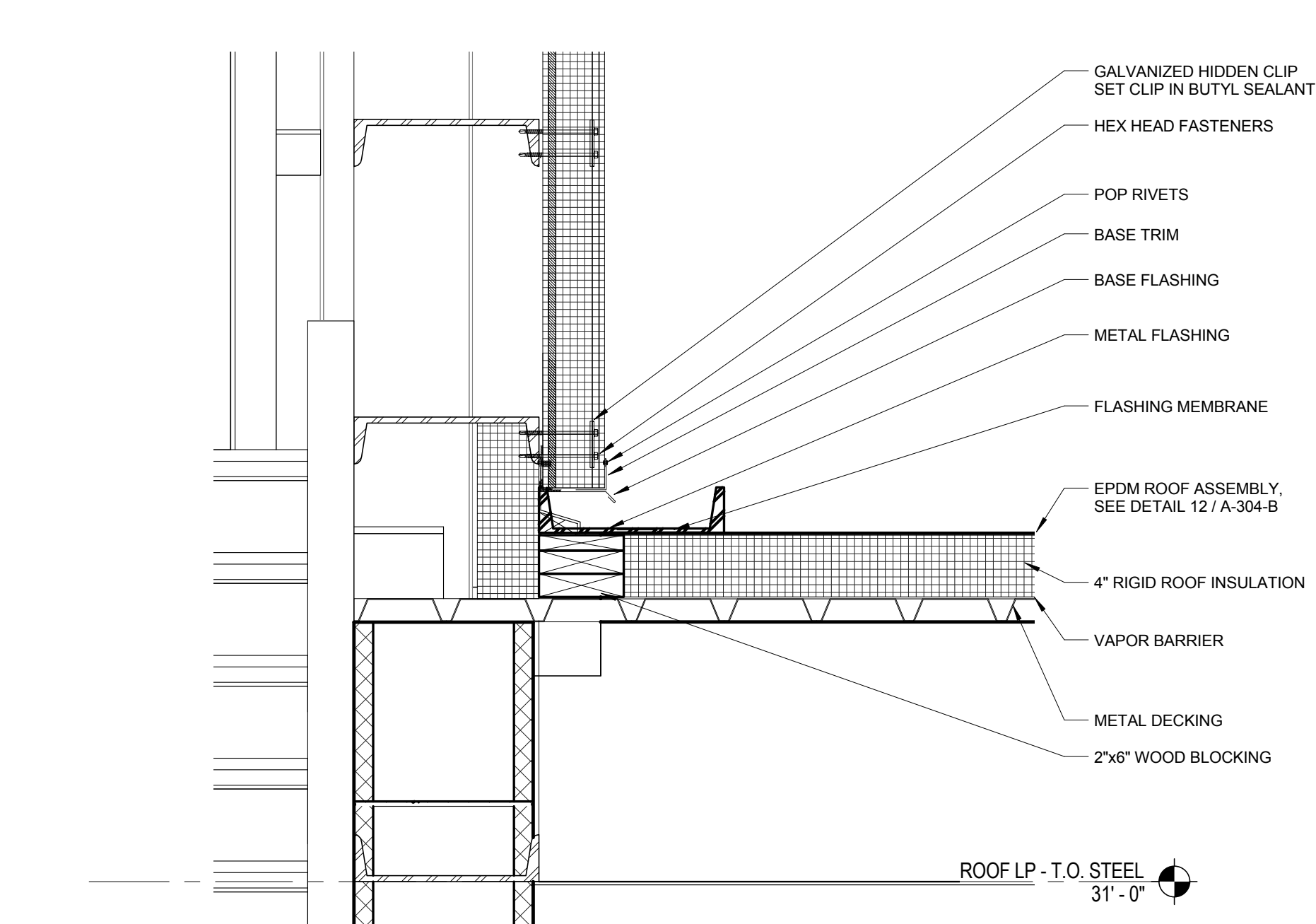
7 PRESSURE-RELIEF WALL DETAIL 1
A-304-B 1 1/2" = 1'-0"



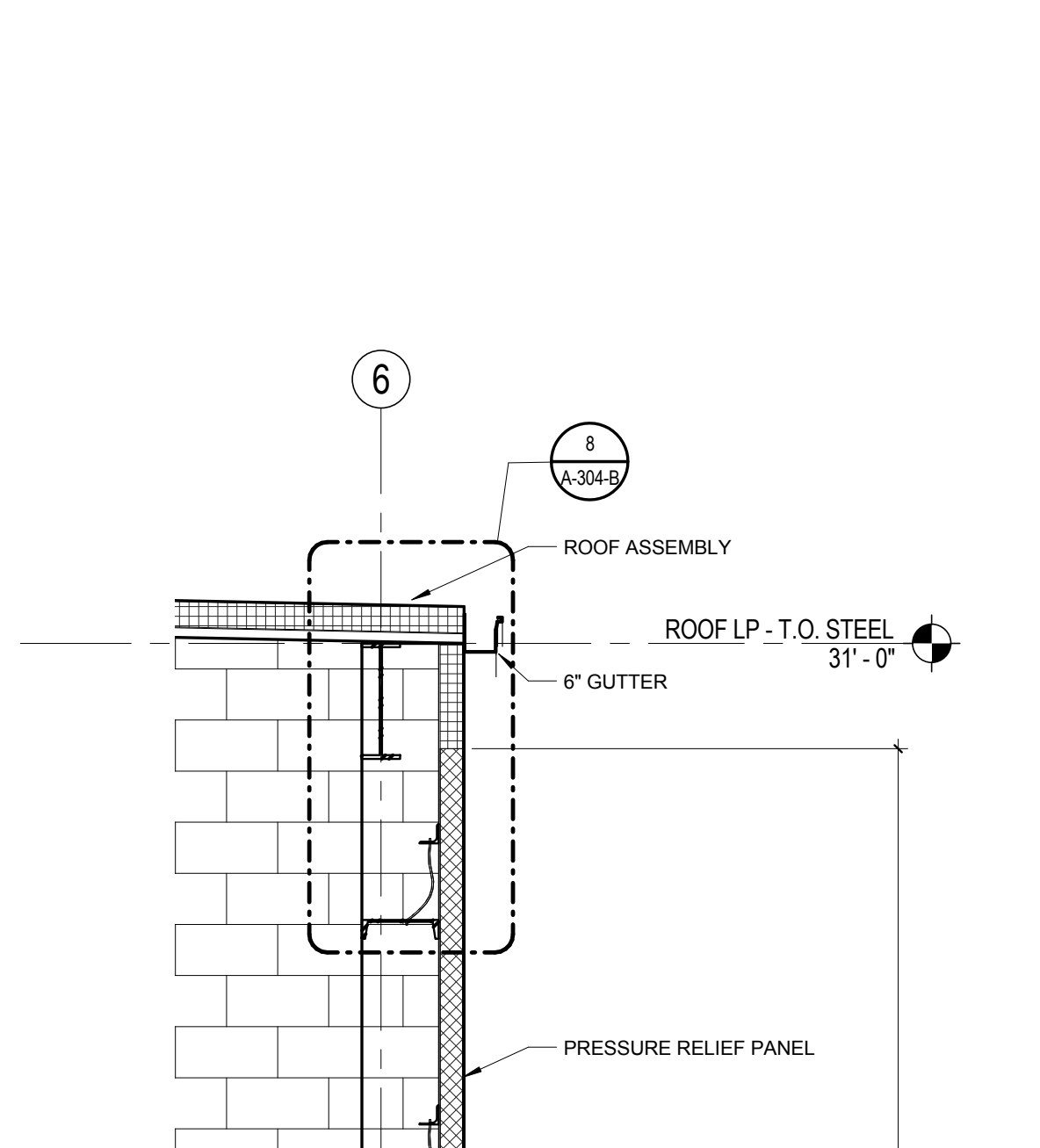
11 PRESSURE-RELIEF WALL DETAIL 2
A-304-B 1 1/2" = 1'-0"



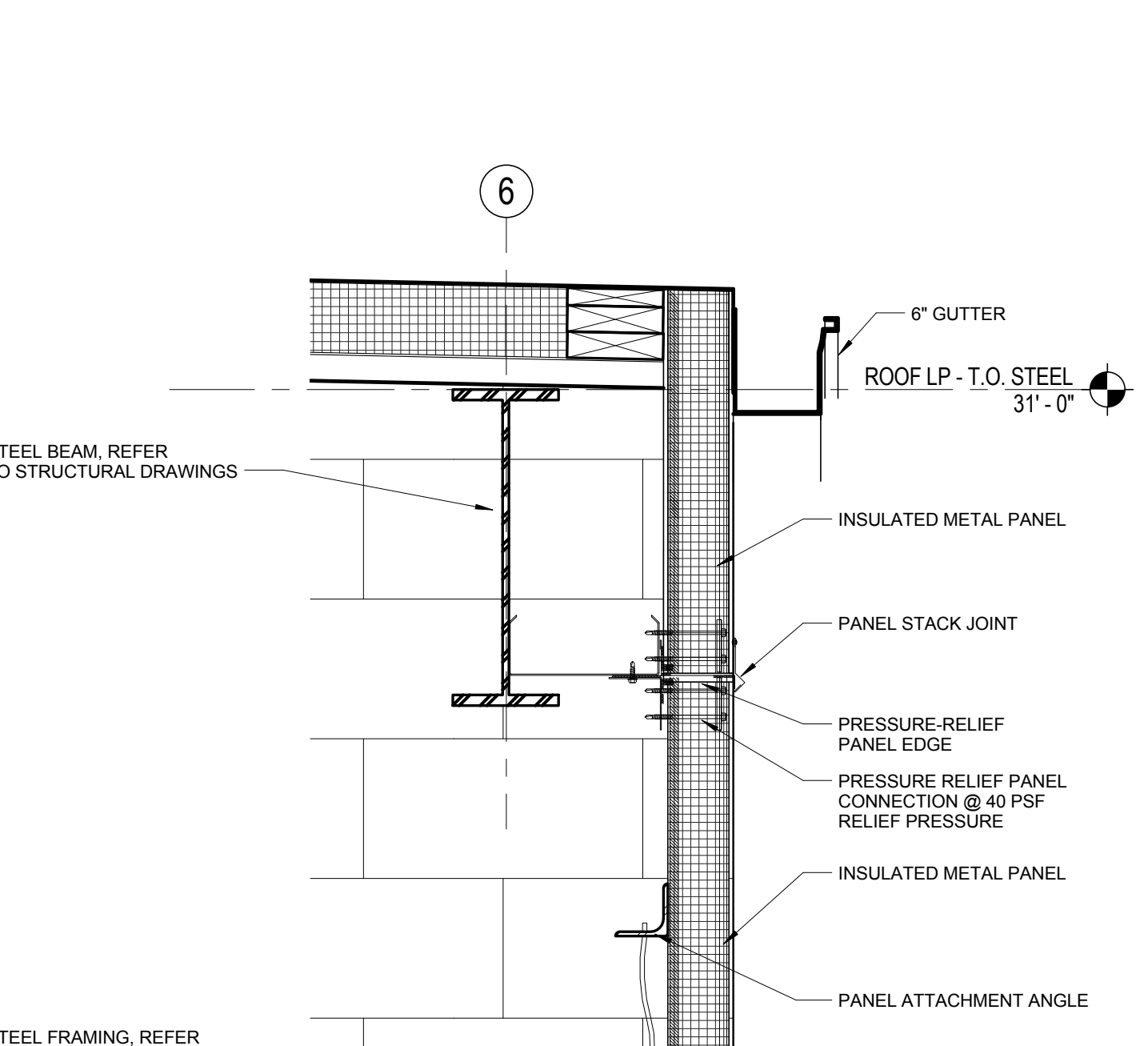
3 EXTERIOR WALL BASE DETAIL
A-304-B 1 1/2" = 1'-0"



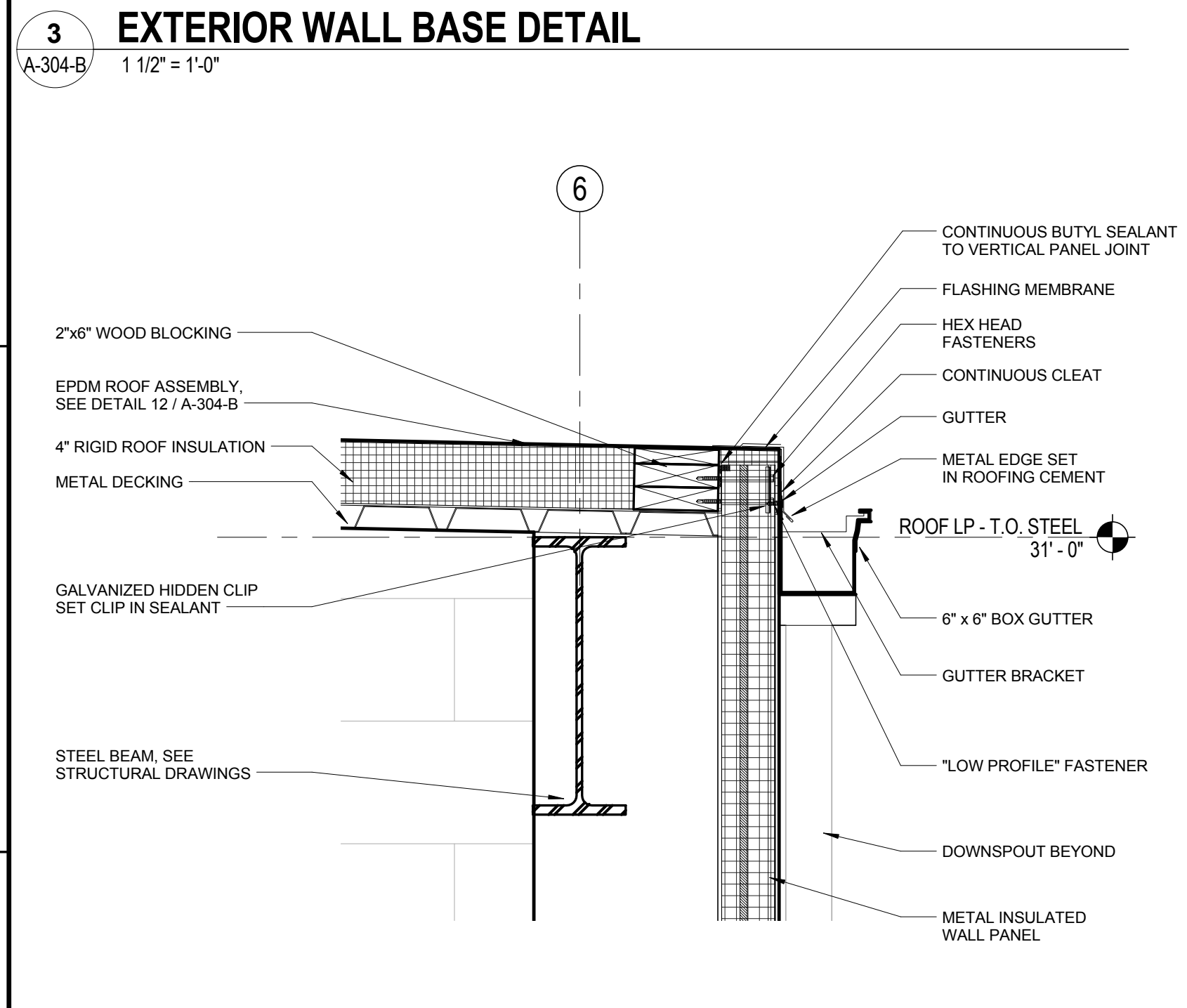
4 STAIR TOWER WALL AT ROOF DETAIL
A-304-B 1 1/2" = 1'-0"



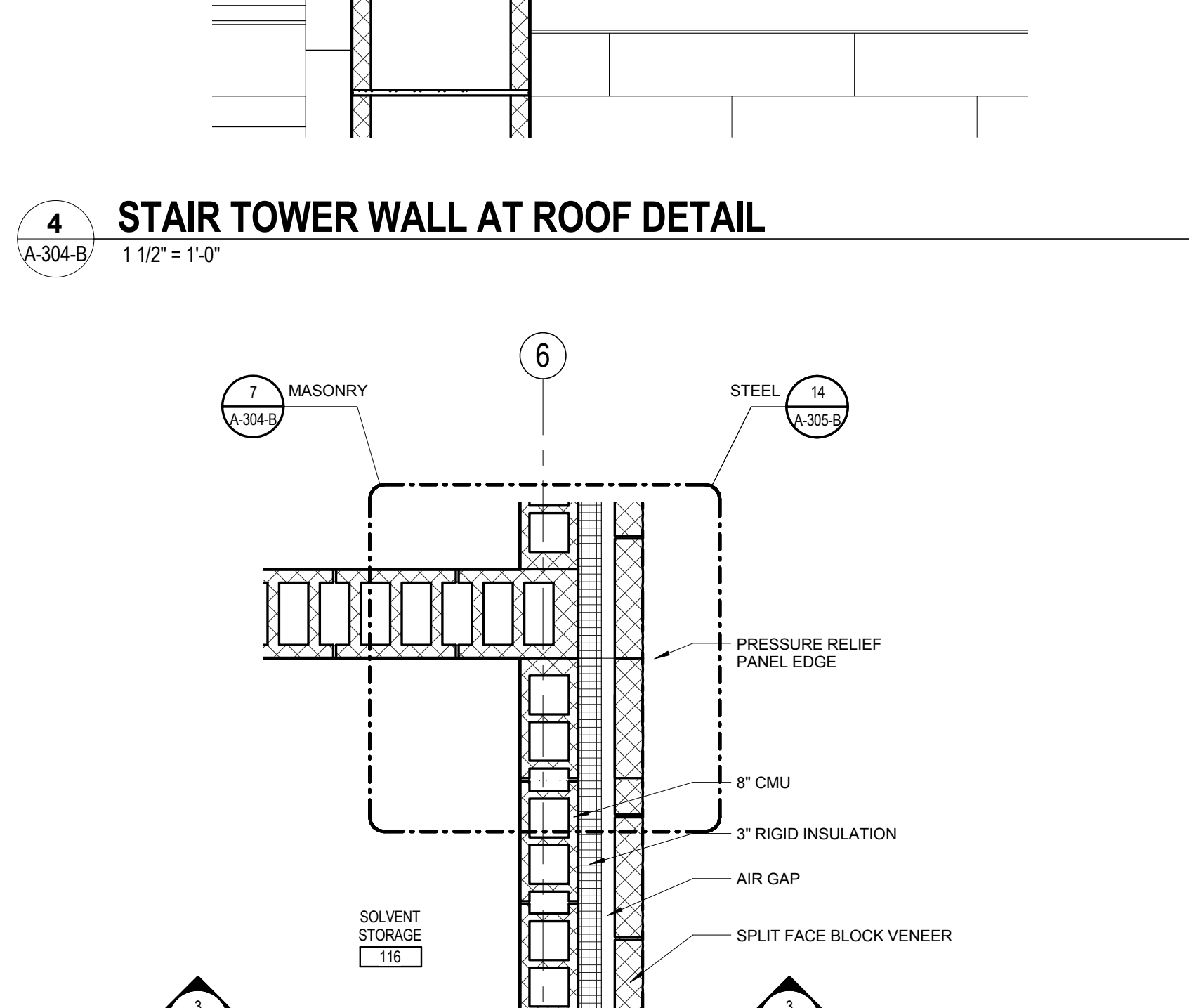
8 PRESSURE-RELIEF WALL DETAIL 3
A-304-B 1 1/2" = 1'-0"



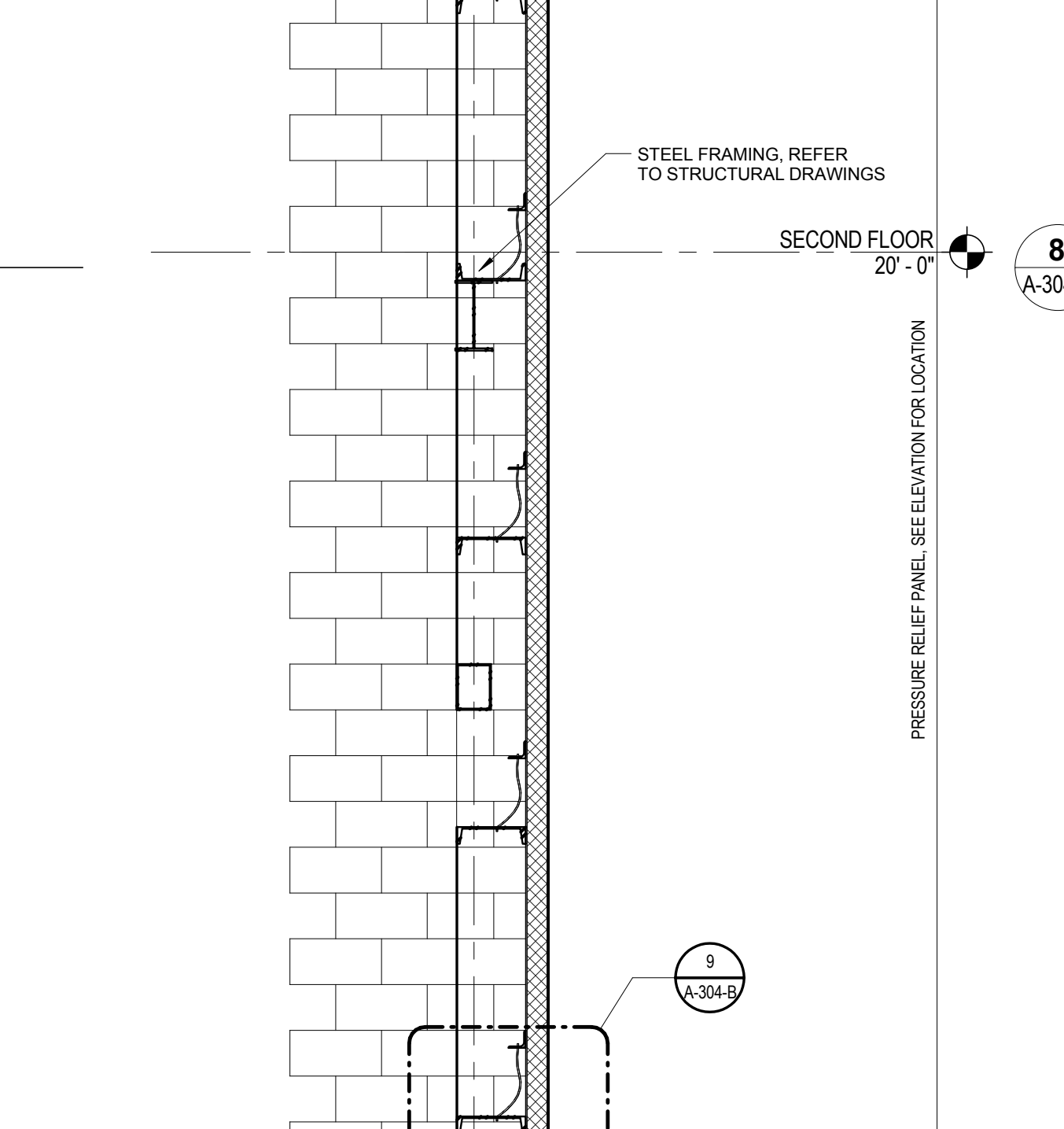
9 PRESSURE-RELIEF WALL DETAIL 4
A-304-B 1 1/2" = 1'-0"



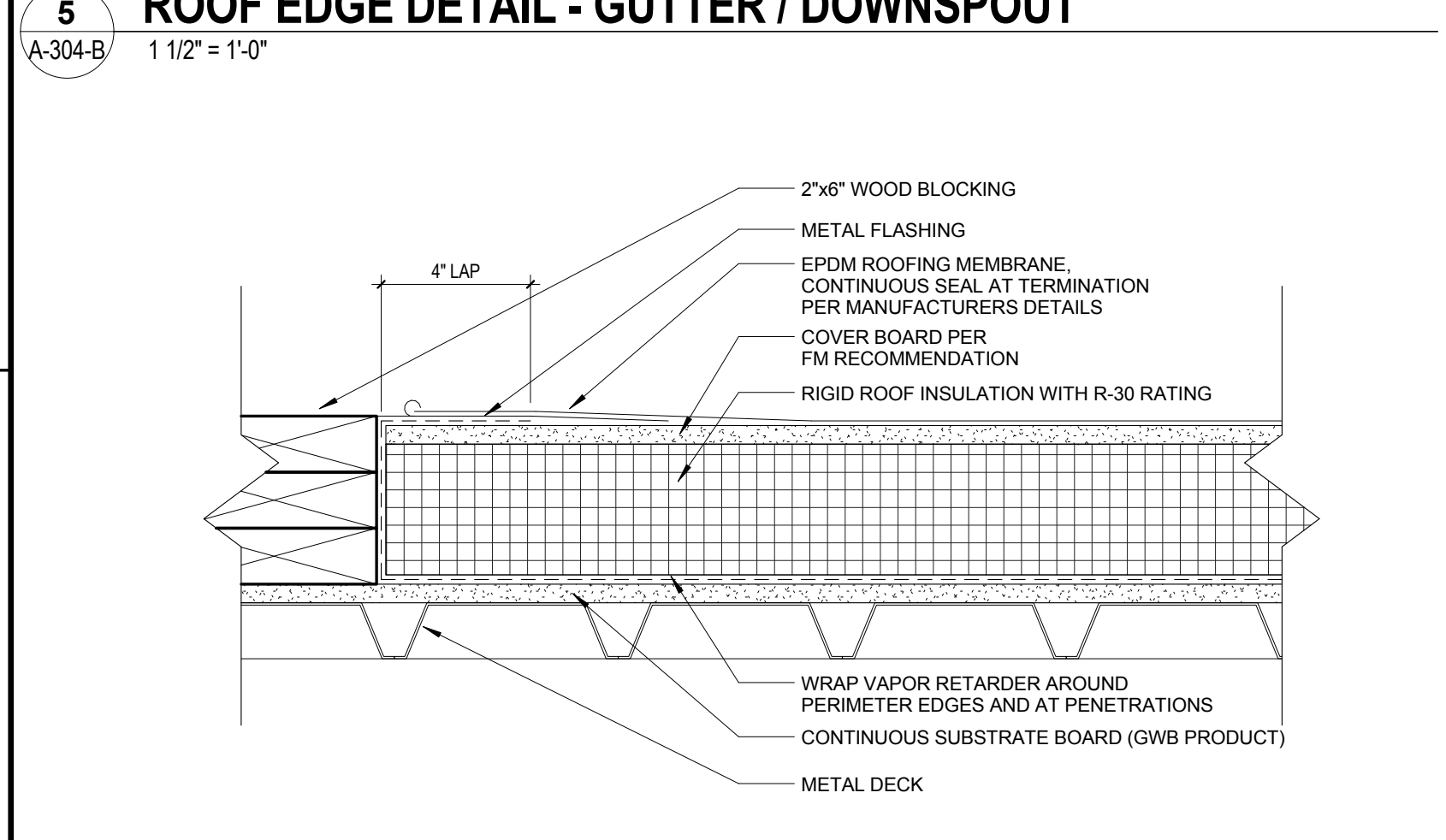
5 ROOF EDGE DETAIL - GUTTER / DOWNSPOUT
A-304-B 1 1/2" = 1'-0"



10 PRESSURE-RELIEF WALL PLAN
A-304-B 3/4" = 1'-0"



6 WALL SECTION 6
A-304-B 1/2" = 1'-0"



12 ROOF ASSEMBLY DETAIL
A-304-B 3" = 1'-0"

Revision	By	App'd	DATE
0	SUPERSTRUCTURE & SHELL - ISSUED FOR CONSTRUCTION	JUL	JUN 06/05/2016
1	PACKAGE C - INTERIOR FINISH		08/19/2016
2	PACKAGE B - SUPERSTRUCTURE & SHELL		08/05/2016
3	PACKAGE A - FOUNDATIONS & BELOW SLAB		07/22/2016



Client/Project
IMMUCELL

Lot 11 - Second Tee Business Park
1039 Riverside Street
Portland, Maine 04103

Title
SECTIONS AND DETAILS

Project No. 191504176
Revision 0

Scale As indicated
Drawing No.