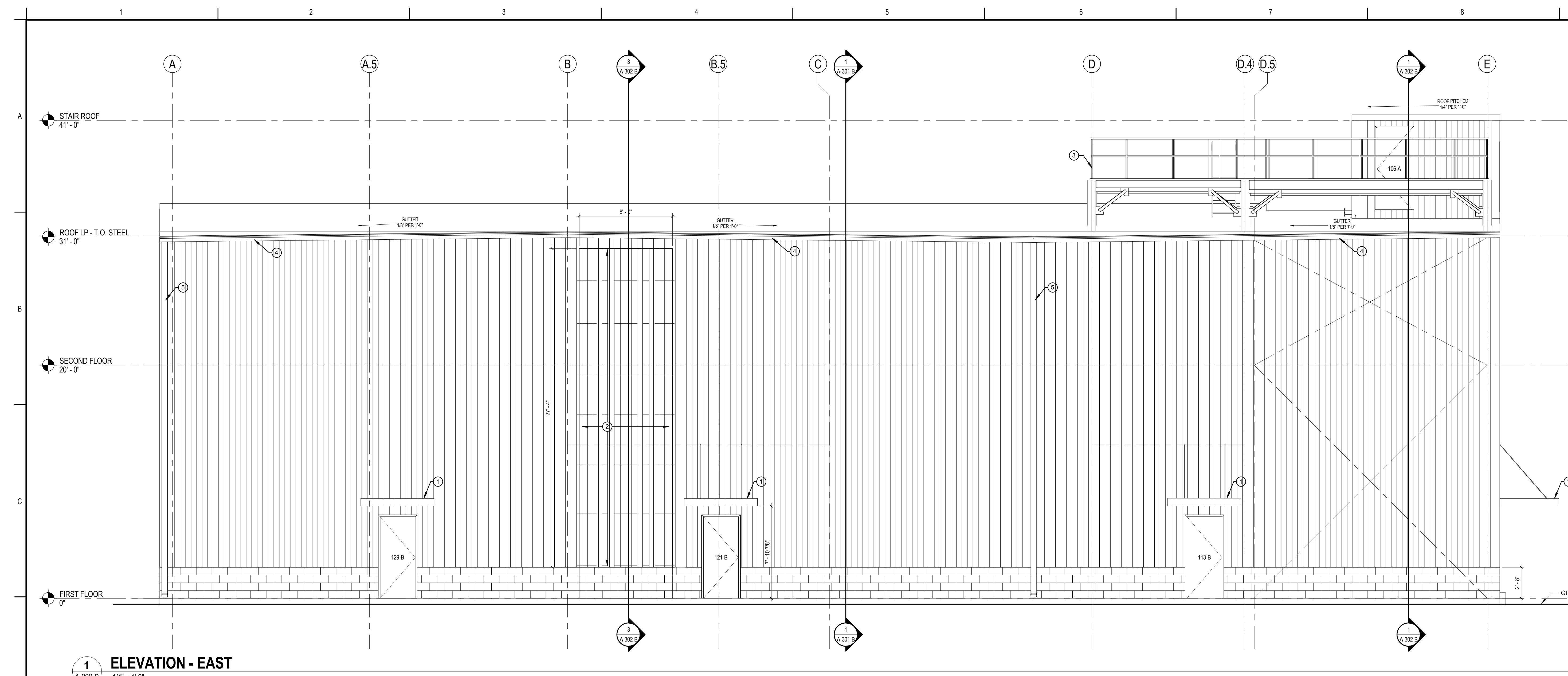


GENERAL NOTES

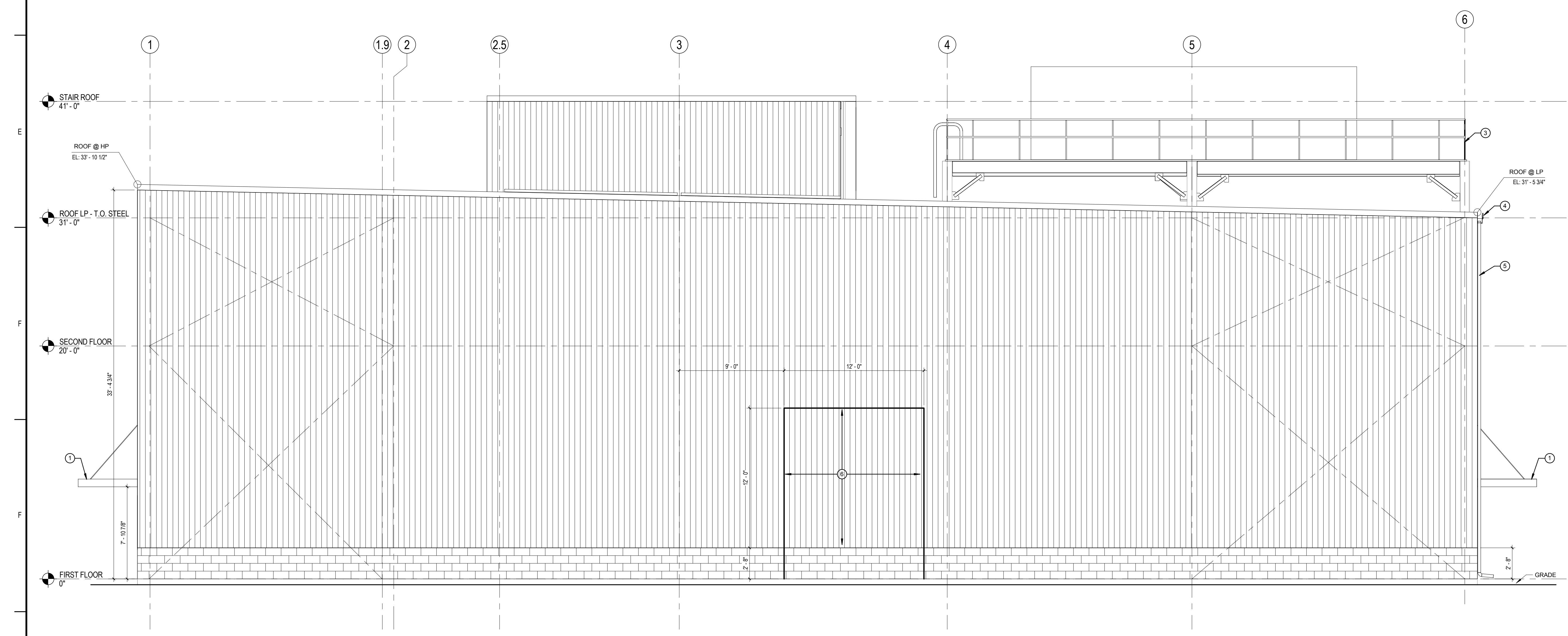
- REFER TO ABBREVIATIONS, SYMBOLS AND GENERAL NOTES ON DRAWING A-001-B FOR ADDITIONAL INFORMATION.

KEYED NOTES

- CANOPY, REFER TO STRUCTURAL DRAWINGS FOR ADDITIONAL INFORMATION.
- PRESSURE RELIEF PANELS, REFER TO DETAILS ON SHEET A-304-B.
- ROOF EQUIPMENT SUPPORT STRUCTURE, REFER TO STRUCTURAL DRAWINGS FOR ADDITIONAL INFORMATION.
- 6"x6" ROOF EDGE GUTTER.
- 6" GUTTER VERTICAL LEADER.
- REMOVABLE PANEL.



1 ELEVATION - EAST
 A-202-B 1/4" = 1'-0"



2 ELEVATION - SOUTH
 A-202-B 1/4" = 1'-0"

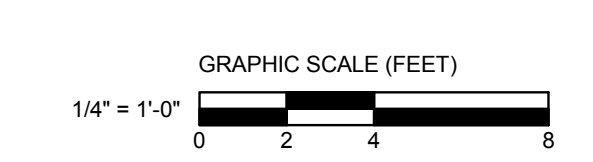
NO.	DESCRIPTION	DATE	BY	APP'D
0	SUPERSTRUCTURE & SHELL - ISSUED FOR CONSTRUCTION	08/05/2016	J.M.	
A	ISSUED FOR CLIENT REVIEW	06/03/2016	BFC	COJAW/MTY
Revision				
PACKAGE C - INTERIOR FIT-OUT				
PACKAGE B - SUPERSTRUCTURE & SHELL				
PACKAGE A - FOUNDATIONS & BELOW SLAB				
ISSUED				



Client/Project
IMMUCELL
 Lot 11 - Second Tee Business Park
 1039 Riverside Street
 Portland, Maine 04103

Title
BUILDING ELEVATIONS

Project No. 191504176
 Scale 1/4" = 1'-0"
 Revision 0
 Drawing No.



A-202-B