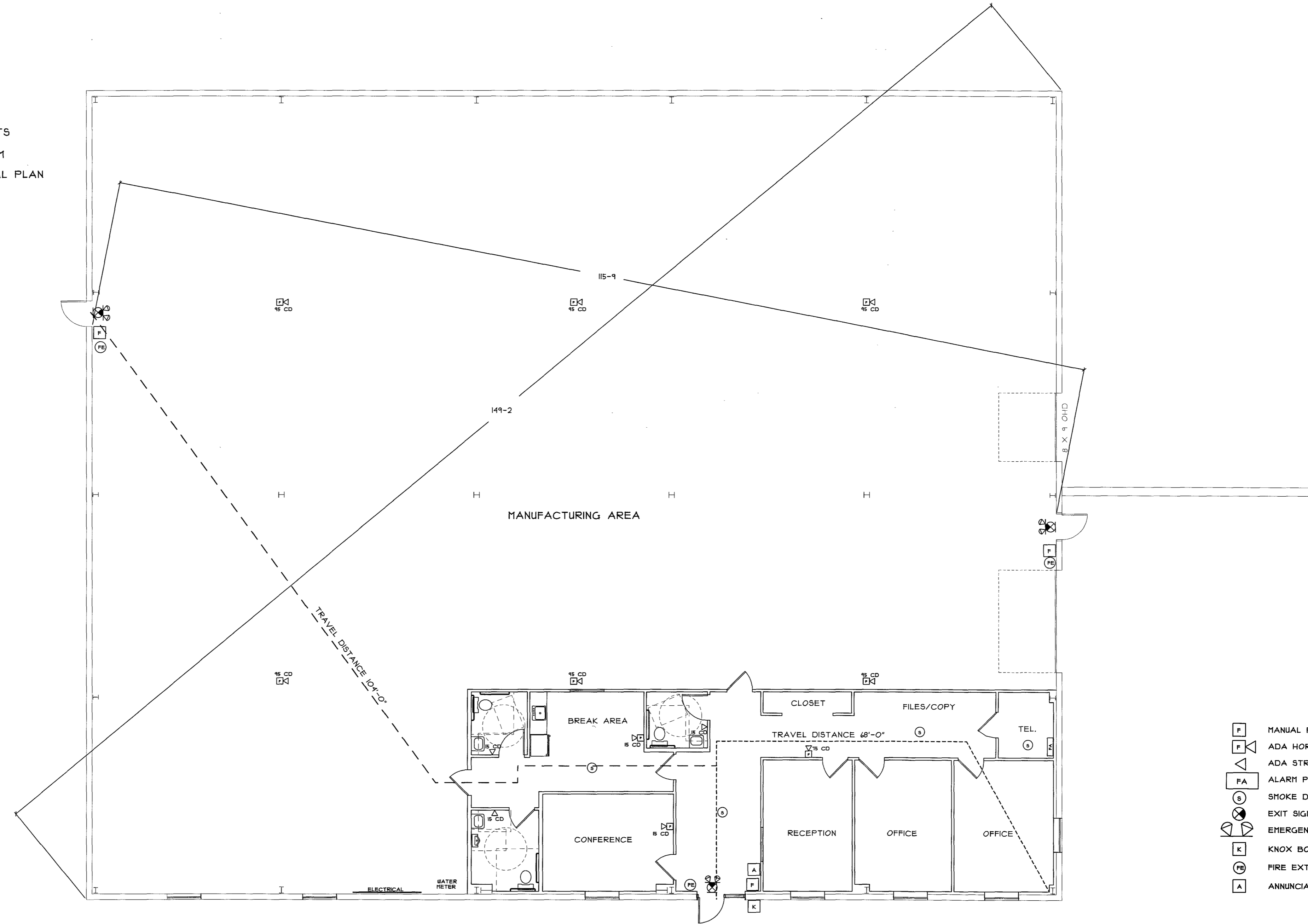


GENERAL NOTES

BUILDING CODES: MUBEC, IBC 2009, NFPA 1 (2009), NFPA 10, NFPA 13, NFPA 101 (2004), IECC 2009
 PERMIT IS FOR THE CONSTRUCTION OF INTERIOR TENANT FIT-UP
 THIS BUILDING DOES NOT HAVE A SPRINKLER SYSTEM.
 THE ENTIRE BUILDING WILL HAVE A FULL FIRE ALARM SYSTEM.
 THE BUILDING SHELL HAS BEEN CONSTRUCTED PERMIT ID: 2015-0312
 ALL DOORS SHALL BE 3'-0" WIDE AND HAVE HANDICAPPED LEVER TYPE HARDWARE
 5 LB ABC FIRE EXTINGUISHERS SHALL BE MOUNTED AT EVERY EXIT
 HANDICAPPED SIGNAGE SHALL BE MOUNTED AT 5'-0" A.F.F. AT ALL FUTURE BATHROOMS AND EXITS
 SEPARATE PERMITS ARE REQUIRED FOR THE ELECTRICAL, PLUMBING, HVAC WORK, AND FIRE ALARM
 EXTERIOR LIGHTING SHALL BE WALL MOUNTED, LED FULL CUT-OFF LIGHT FIXTURES, SEE ELECTRICAL PLAN



- [M] MANUAL PULL STATION
- [A] ADA HORN/STROBE
- [A] ADA STROBE ONLY
- [FA] ALARM PANEL
- [S] SMOKE DETECTOR
- [E] EXIT SIGN
- [ELP] EMERGENCY LIGHT PACK
- [K] KNOX BOX
- [R] FIRE EXTINGUISHER
- [A] ANNUNCIATOR PANEL

IBC 2009: CODE DATA	
OCCUPANT LOAD - TABLE 1004.1 BUSINESS; 100 GROSS, INDUSTRIAL; 100 GROSS	B, II, F-1, 93 = 110 TOTAL
USE GROUP CLASSIFICATION - NON SEPARATED; 508.3.1	B; 3041, F-1; 304.2
TYPE OF CONSTRUCTION - TABLE 601	V, B
ACTUAL BUILDING AREA	10,925 S.F.
BUILDING AREA LIMITATION - TABLE 503 "F" (MOST RESTRICTIVE)	8,500 S.F.
STREET FRONTAGE INCREASE - 504.2	4,250 S.F. (SEE CALCULATIONS BELOW)
AUTOMATIC SPRINKLER SYS. INCREASE - 504.3	NA
ALLOWABLE BUILDING AREA	12,150 S.F.
BUILDING HEIGHT LIMITATION - TABLE 503	1 STORY
ALLOWABLE BUILDING HEIGHT - WITH ALLOWABLE INCREASES	21'-0" 3/4" 1 STORY
BUILDING HEIGHT	NONE
FIRE SUPPRESSION: "B" 903.2.2, "F" 903.2.4	NONE
FIRE RESISTANT CONSTRUCTION:	
STRUCTURAL FRAME	NA
EXTERIOR BEARING WALLS	NA
INTERIOR BEARING WALLS	NA
EXTERIOR NONBEARING WALLS	NA
FIRE WALLS 1 PARTY WALLS	NA
FLOOR CONSTRUCTION	NA
ROOF CONSTRUCTION	NA
STAIR ENCLOSURES	NA
EXIT ACCESS TRAVEL DISTANCE 101.1	200' (NO SPRINKLER SYSTEM)
COMMON PATH OF TRAVEL - SEE NFPA 101-2009 TABLE A1.4	50' (NO SPRINKLER SYSTEM)
MINIMUM NUMBER OF EXITS - TABLE 102.1	B, II, F-1; 2
ACCESSORY USE	NA
FIRE EXTINGUISHERS - TABLE 902.3(1)	2-A, 1 AT EACH EXIT
GENERAL NOTES	PERMIT IS FOR INTERIOR TENANT FITUP

NFPA 101: CODE DATA - 2009 EDITION	
OCCUPANT LOAD - TABLE 13.1.2 BUSINESS; 100 GROSS, INDUSTRIAL; 100 GROSS	B, II, IND, 93 = 110 TOTAL
USE GROUP CLASSIFICATION - MIXED; 411.3.1	BUSINESS 411.1, INDUSTRIAL 412.1
TYPE OF CONSTRUCTION - TABLE 8.1	V (OOO)
ACTUAL BUILDING AREA	10,925 S.F.
BUILDING HEIGHT	21'-0" 3/4" 1 STORY
FIRE SUPPRESSION: BUSINESS; 38.3.5, INDUSTRIAL; 40.3.5	NONE
FIRE RESISTANT CONSTRUCTION:	
STRUCTURAL FRAME	NA
EXTERIOR BEARING WALLS	NA
EXTERIOR NONBEARING WALLS	NA
FIRE WALLS 1 PARTY WALLS	NA
FLOOR CONSTRUCTION	NA
ROOF CONSTRUCTION	NA
STAIR ENCLOSURES	NA
EXIT ACCESS TRAVEL DISTANCE - 38.2.4.2, TABLE 40.2.4	200' (NO SPRINKLER SYSTEM)
COMMON PATH OF TRAVEL - TABLE 40.2.5 INDUSTRIAL MOST RESTRICTIVE	50' (NO SPRINKLER SYSTEM)
MINIMUM NUMBER OF EXITS 1.4.1.1	2
ACCESSORY USE	NA
FIRE EXTINGUISHERS	2-A, 1 AT EACH EXIT
GENERAL NOTES	PERMIT IS FOR INTERIOR TENANT FITUP

NFPA 1: CODE DATA - 2009 EDITION	
OCCUPANT LOAD - TABLE 14.8.1.2 BUSINESS; 100 GROSS, INDUSTRIAL; 100 GROSS	B, II, IND, 93 = 110 TOTAL
USE GROUP CLASSIFICATION - MIXED 411.3	BUSINESS; 411, INDUSTRIAL; SECTION 412
TYPE OF CONSTRUCTION - TABLE A1.2.2	V (OOO)
ACTUAL BUILDING AREA	10,925 S.F.
BUILDING HEIGHT	21'-0" 3/4" 1 STORY
FIRE SUPPRESSION:	
FIRE WALLS 1 PARTY WALLS	NA
COMMON PATH OF TRAVEL 14.10.1.4	50' (NO SPRINKLER SYSTEM)
MINIMUM NUMBER OF EXITS 14.9.1.1	2
FIRE FLOW TABLE 18.4.5.1.2	2,150 GPM
FIRE FLOW REDUCTION 18.4.5.2.1	0%
FIRE FLOW 18.4.5.2.1	2,150 GPM
MINIMUM NUMBER OF HYDRANTS TABLE 1.3	3
MAX. DISTANCE FROM HYDRANT TO STREET FRONTAGE TABLE 1.3	225'
ACTUAL DISTANCE FROM HYDRANT TO STREET FRONTAGE	10'
FIRE EXTINGUISHERS - TABLE 13.6.2.1.1	2-A, 1 AT EACH EXIT
GENERAL NOTES	PERMIT IS FOR INTERIOR TENANT FITUP

STREET FRONTAGE INCREASE 504.2
 AREA INCREASE = (290/420-0.25) 30/30
 AREA INCREASE = 0.45 OR 3,825 S.F.

BISKUP CONSTRUCTION, INC.
 16 DANIELLE DRIVE
 WINDHAM, MAINE 04062
 TEL. (207) 892-9800
 FAX. (207) 892-9895
 WWW.BISKUPCONSTRUCTION.COM

STAMP

J. M. STREETER
 ARCHITECTURAL
 ENGINEER
 44 CARSOE DRIVE
 PORTLAND, MAINE 04103 (207) 797-3093

PROJECT:
 TENANT FIT-UP
 PURESTAT EXTRUSIONS, LLC
 75 WALCH DRIVE
 PORTLAND, MAINE

REVISIONS	
DATE	DESCRIPTION

DATE: 2/11/2011
 SCALE: 1/8" = 1'-0"
 DESIGNER: JB
 CHECKED BY: JB

© COPYRIGHT
 BISKUP CONSTRUCTION, INC.

SHEET TITLE
**LIFE SAFETY
 PLAN**

SHEET NUMBER
A-2
 SHEET 2 OF 4