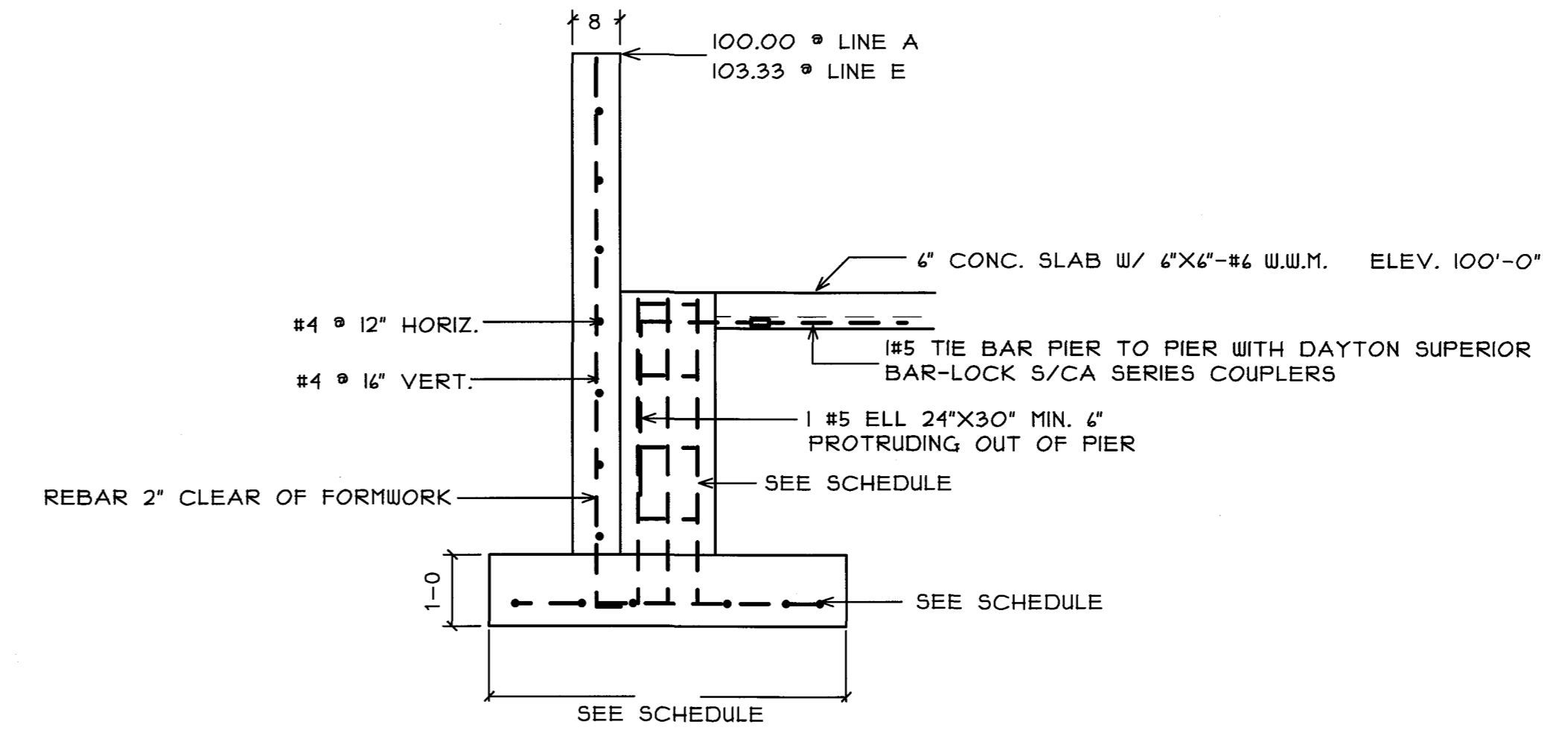
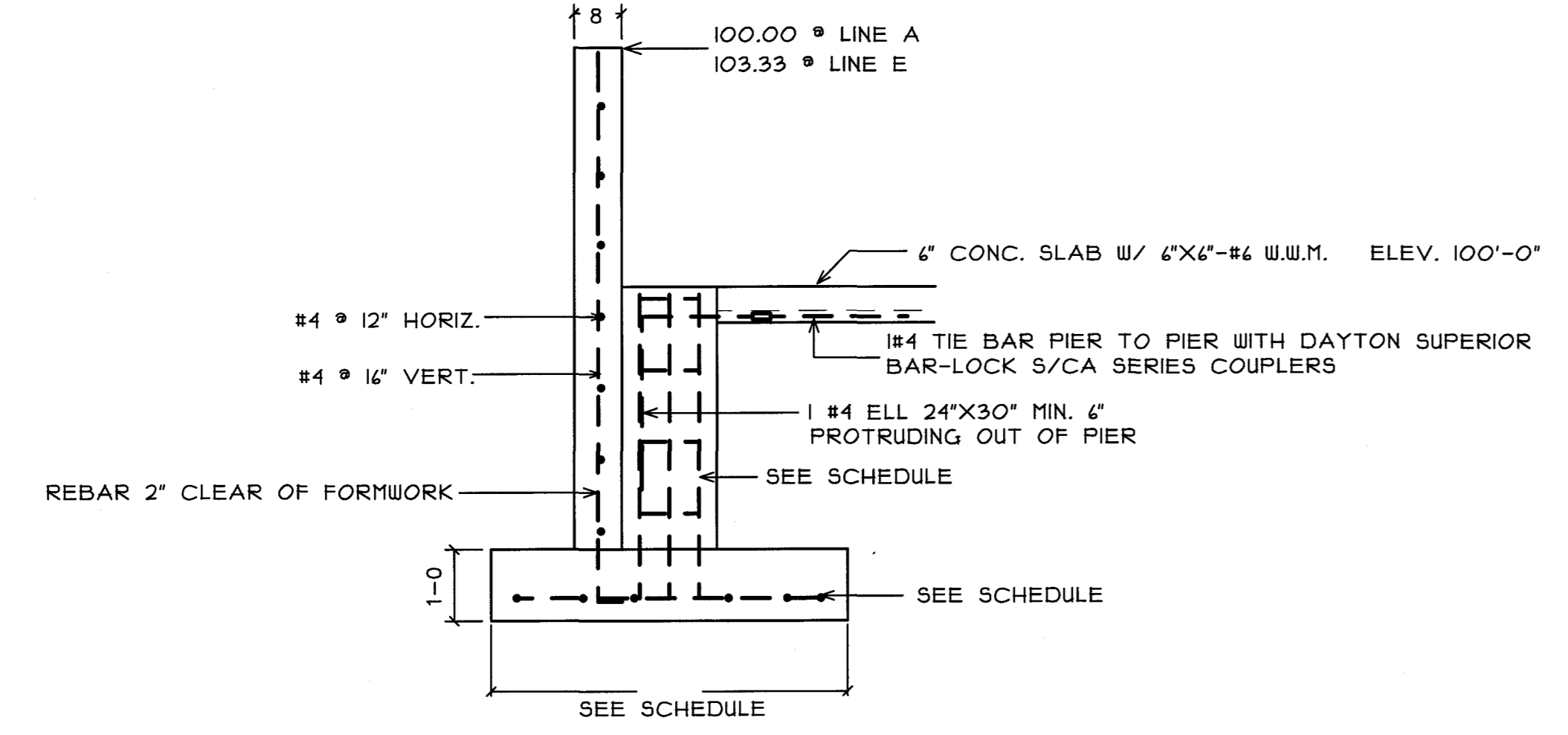


TYP. INT. FOOTING & PIER
SCALE: 1/2"=1'-0"



WALL SECTION @ PIERS
2A-5A, 2E-5E



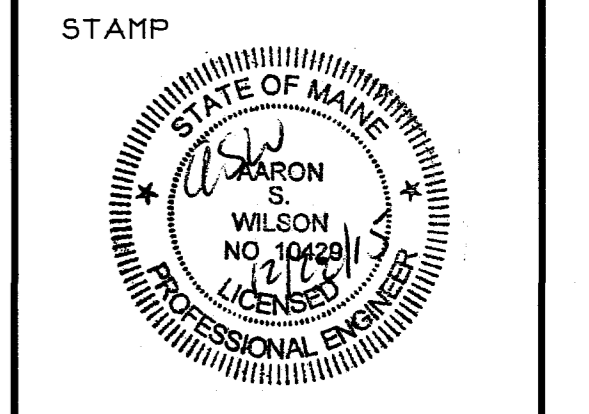
WALL SECTION @ PIERS
1B, 1C, 1D, 6B, 6C, 6D



BISKUP CONSTRUCTION, INC.
16 DANIELLE DRIVE
WINDHAM, MAINE 04042
TEL. (207) 892-9800
FAX. (207) 892-9895

WWW.BISKUPCONSTRUCTION.COM

CONSULTANT
ASSOCIATED DESIGN
PARTNERS INC.
80 Leighton Road, Office: (207) 878-1755
Farmville, Maine 04105 Fax: (207) 878-1758
E-Mail: adp@adpartners.com



PROJECT:
MOONGATE PROPERTIES LLC
1039 RIVERSIDE STREET
UNIT #9
PORTLAND, MAINE

REVISIONS	
DATE	DESCRIPTION

DATE: 12/28/2015
SCALE: 1/2" = 1'-0"
DESIGNER: AW
CHECKED BY: JB
© COPYRIGHT
BISKUP CONSTRUCTION, INC.

SHEET TITLE
FOUNDATION
DETAILS

SHEET NUMBER
S-3
SHEET 3 OF 3