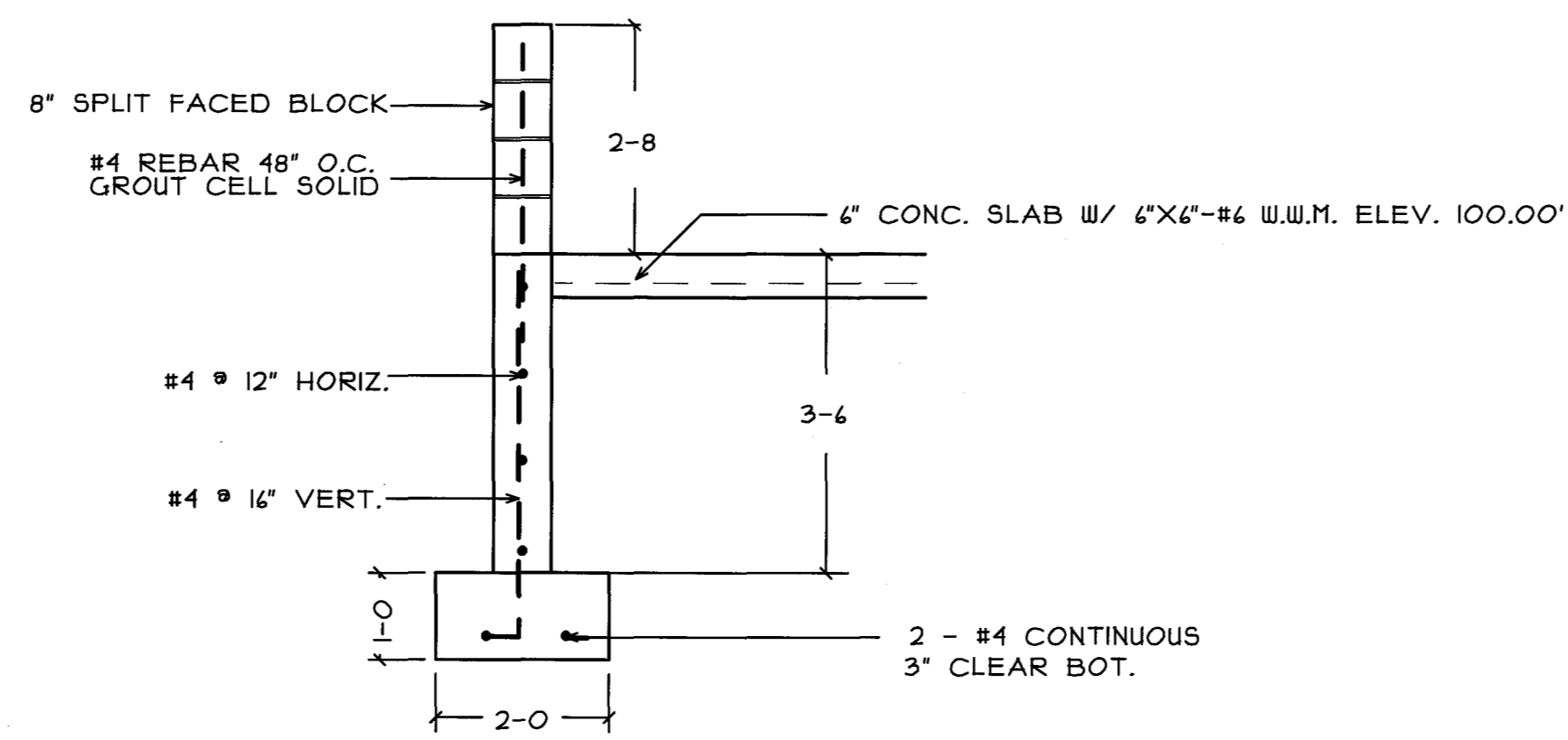
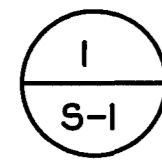


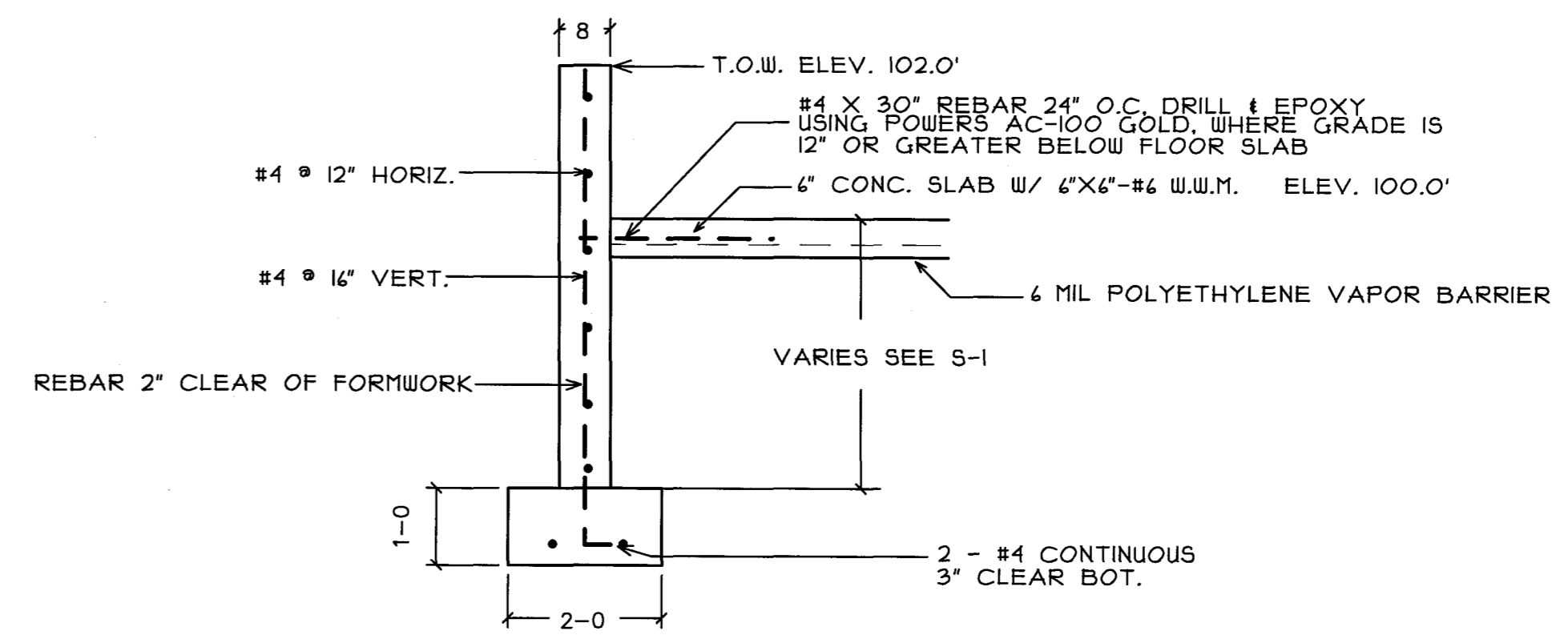
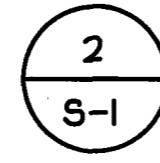
SECTION THRU DOOR OPENINGS

SCALE: 1/2"=1'-0"



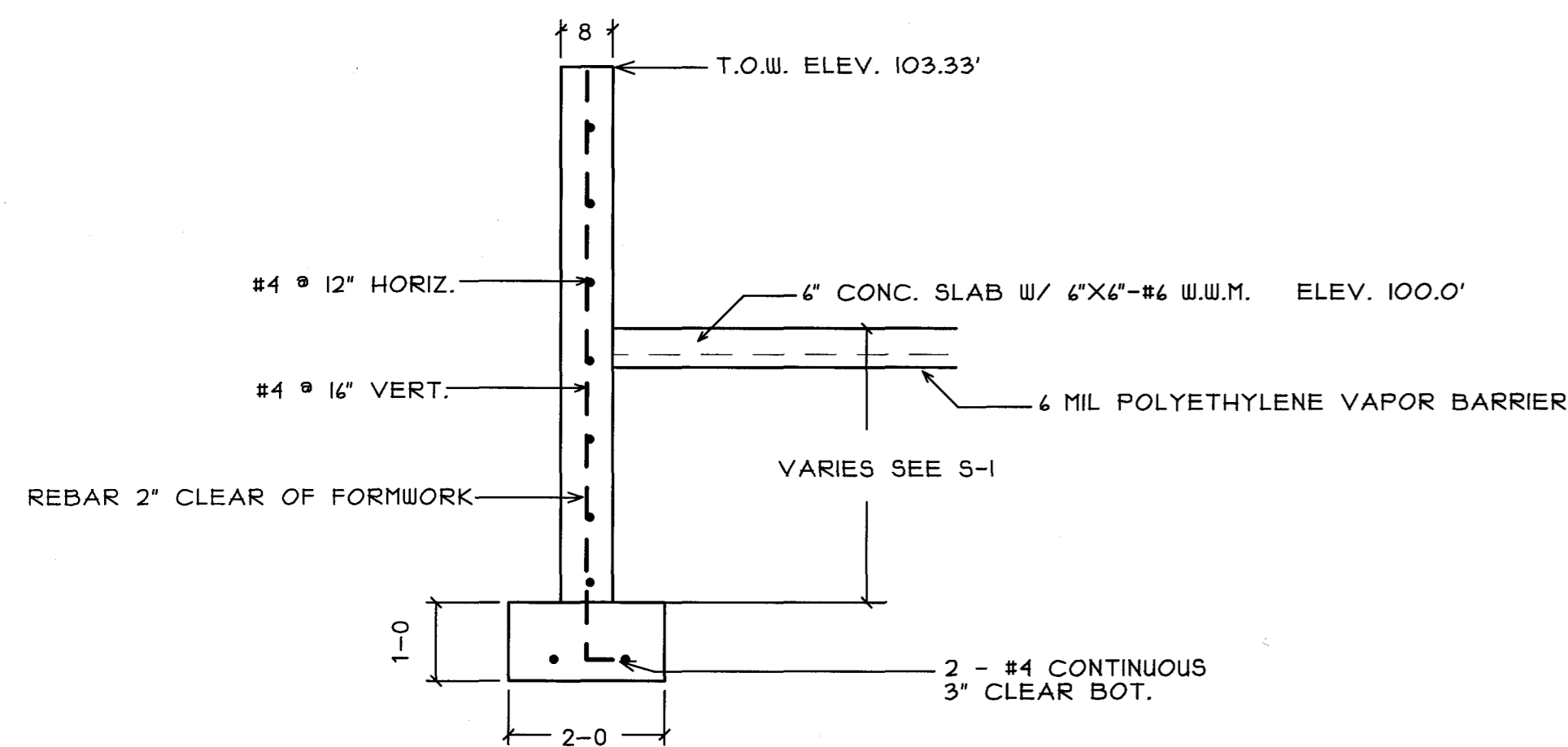
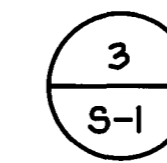
WALL SECTION

SCALE: 1/2"=1'-0"



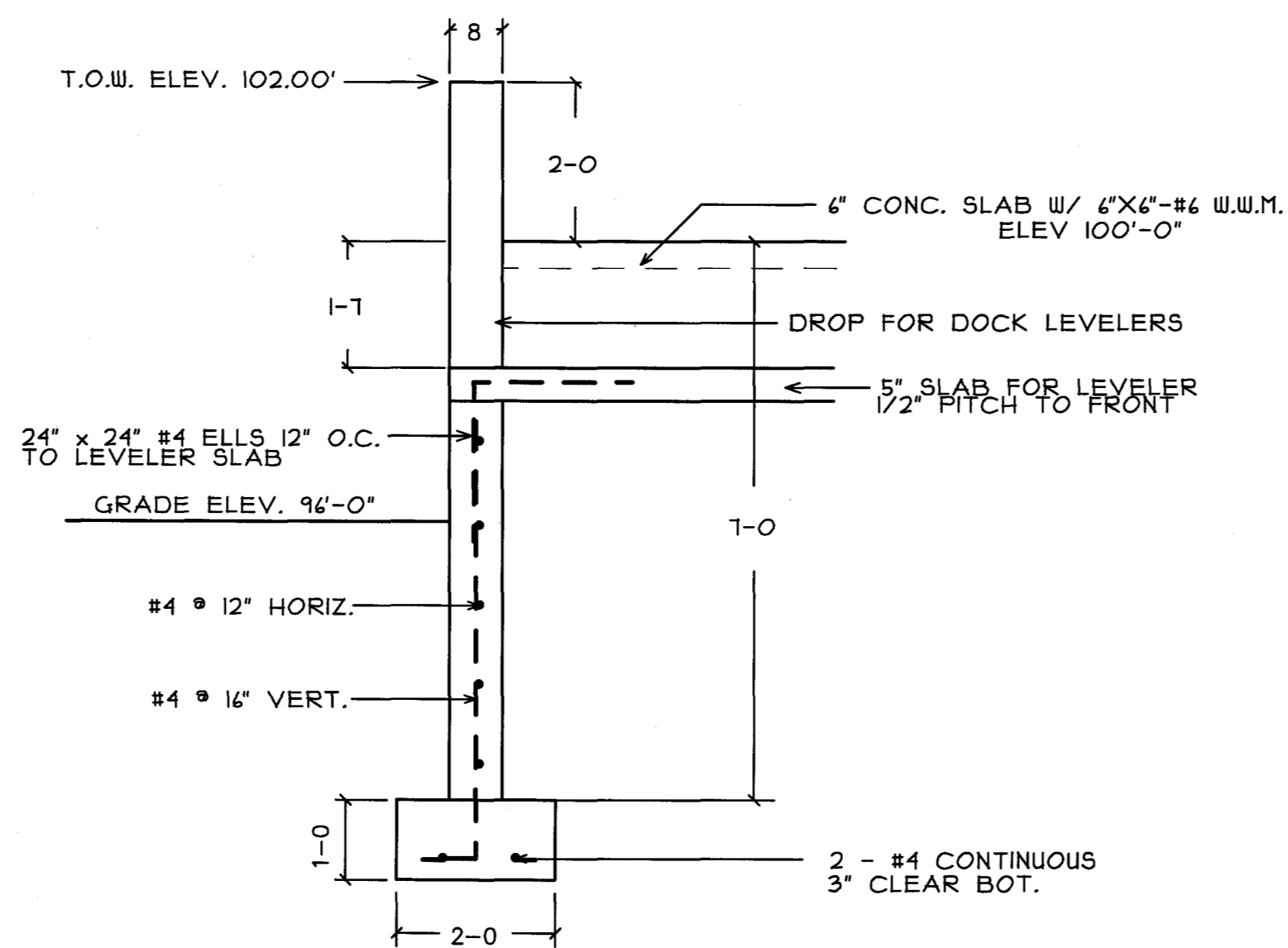
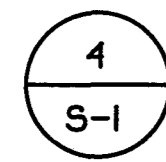
WALL SECTION

SCALE: 1/2"=1'-0"



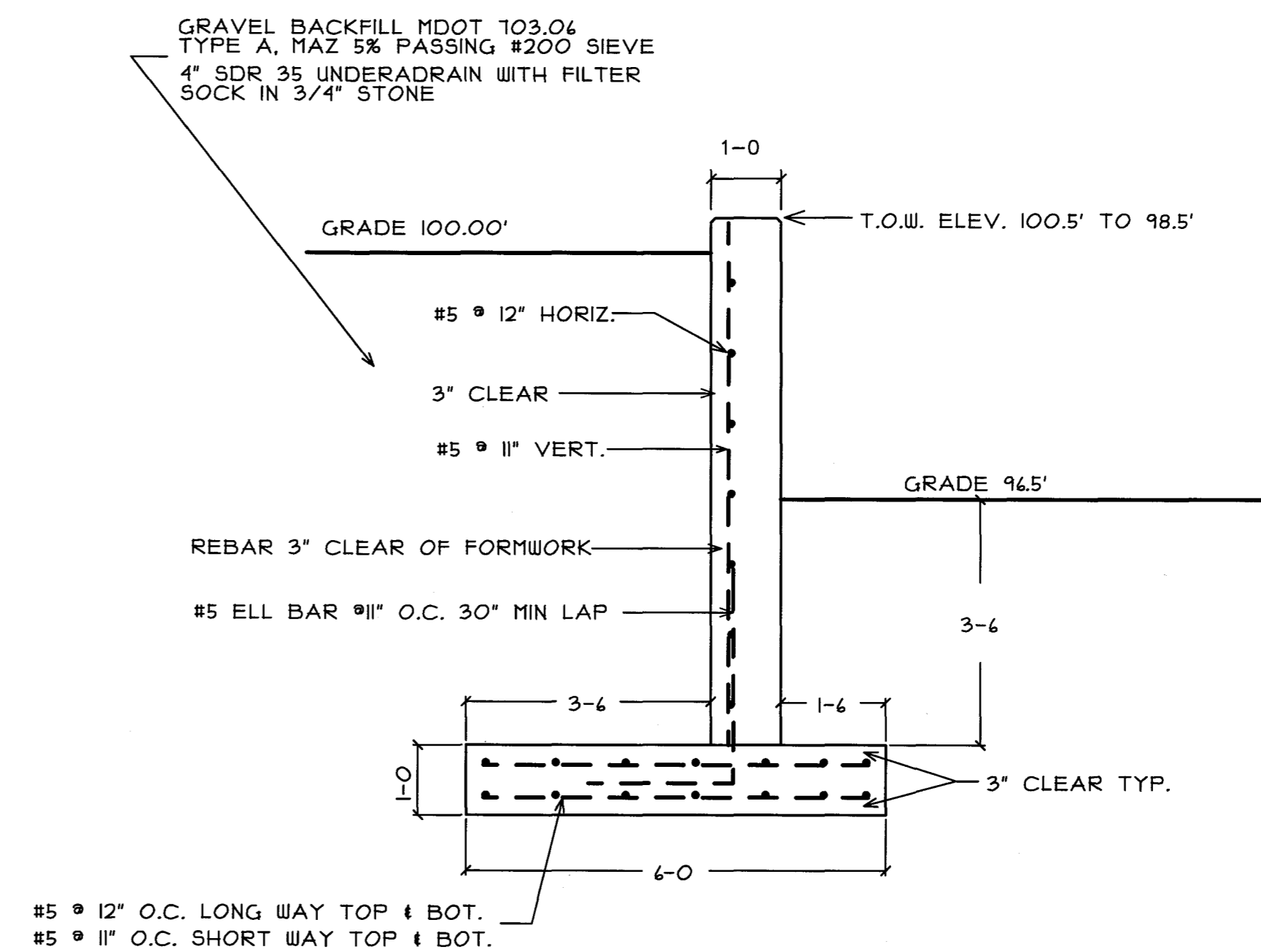
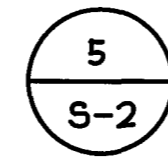
WALL SECTION

SCALE: 1/2"=1'-0"



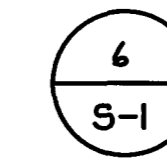
WALL SECTION

SCALE: 1/2"=1'-0"



RETAINING WALL

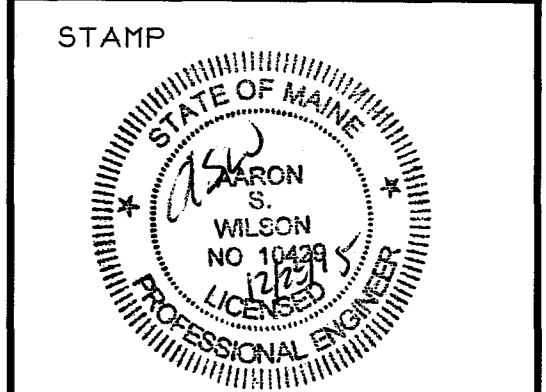
SCALE: 1/2"=1'-0"



**B C I**  
 BISKUP CONSTRUCTION, INC.  
 16 DANIELLE DRIVE  
 WINDHAM, MAINE 04062  
 TEL. (207) 892-9800  
 FAX. (207) 892-9895

WWW.BISKUPCONSTRUCTION.COM

CONSULTANT  
 ASSOCIATED DESIGN  
 PARTNERS INC.  
 80 Leighton Road, Office: (207) 878-1751  
 Farmville, Maine 04105 Fax: (207) 878-1758  
 E-Mail: adp@engpartners.com



PROJECT:  
 MOONGATE PROPERTIES LLC  
 1039 RIVERSIDE STREET  
 UNIT #9  
 PORTLAND, MAINE

REVISIONS	
DATE	DESCRIPTION

DATE: 12/28/2015  
 SCALE: 1/2" = 1'-0"  
 DESIGNER: AW  
 CHECKED BY: JB  
 © COPYRIGHT  
 BISKUP CONSTRUCTION, INC.

SHEET TITLE  
 FOUNDATION  
 DETAILS

SHEET NUMBER  
 S-2  
 SHEET 2 OF 3