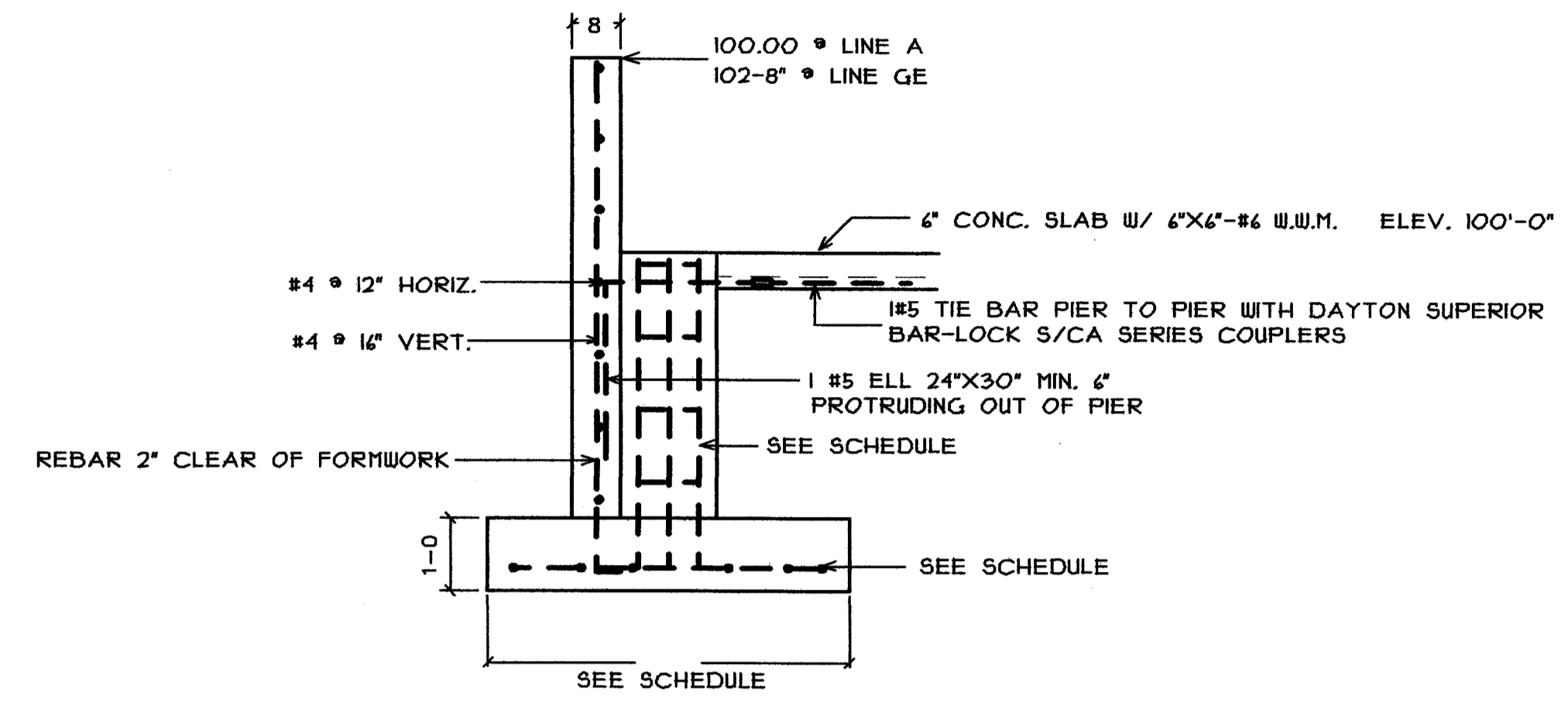


TYP. INT. FOOTING & PIER
SCALE: 1/2" = 1'-0"



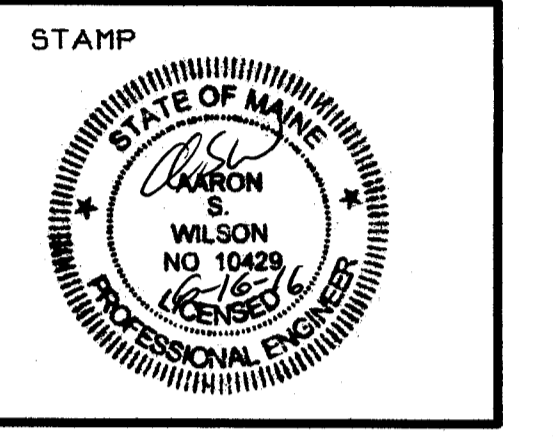
WALL SECTION @ PIERS
2A-5A, 2G-5G



BISKUP CONSTRUCTION, INC.
16 DANIELLE DRIVE
WINDHAM, MAINE 04092
TEL. (207) 892-1800
FAX. (207) 892-1815

WWW.BISKUPCONSTRUCTION.COM

CONSULTANT
ASSOCIATED DESIGN
PARTNERS INC.
80 Lakeside Road
Portland, Maine 04106
Office: (207) 892-1751
Fax: (207) 892-1750
E-Mail: adp@adpartners.com



PROJECT:
1039 RIVERSIDE LLC
1039 RIVERSIDE STREET
UNIT # 2
PORTLAND, MAINE

REVISIONS	
DATE	DESCRIPTION

DATE: 4/16/2014
SCALE: 1/2" = 1'-0"
DESIGNER: AW
CHECKED BY: JB

© COPYRIGHT
BISKUP CONSTRUCTION, INC.

SHEET TITLE
FOUNDATION
DETAILS

SHEET NUMBER
S-3
SHEET 3 OF 3