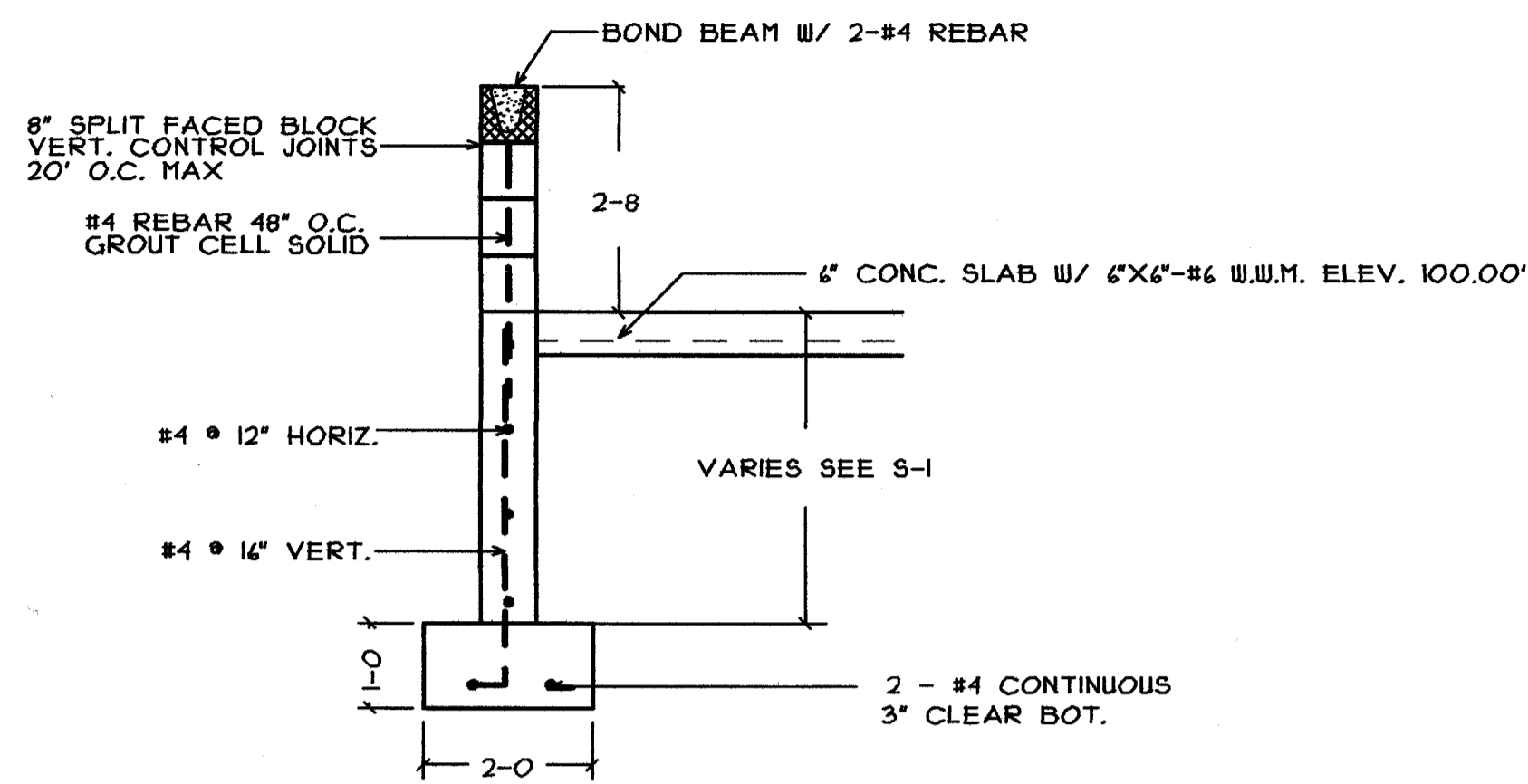
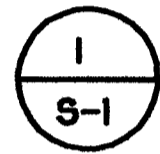


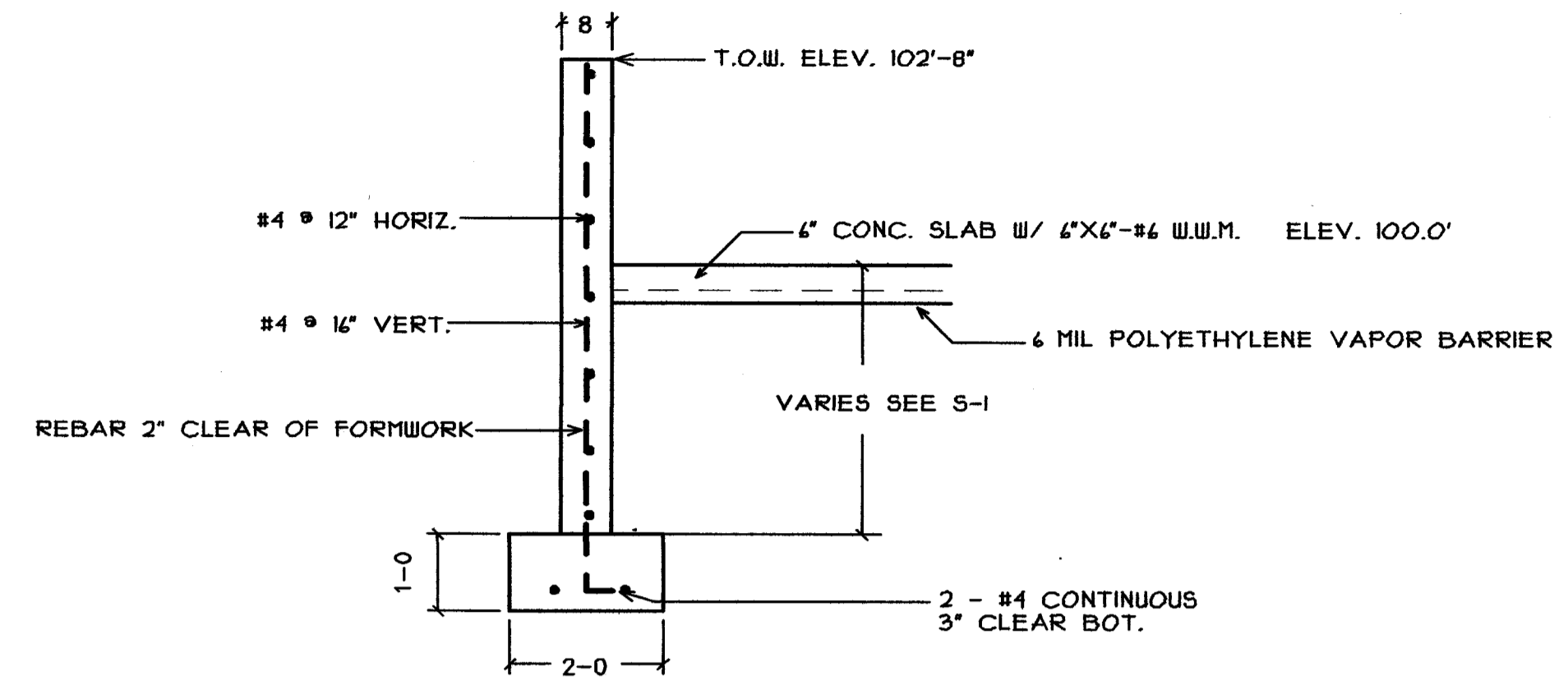
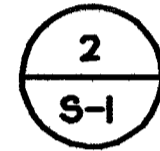
SECTION THRU DOOR OPENINGS

SCALE: 1/2"=1'-0"



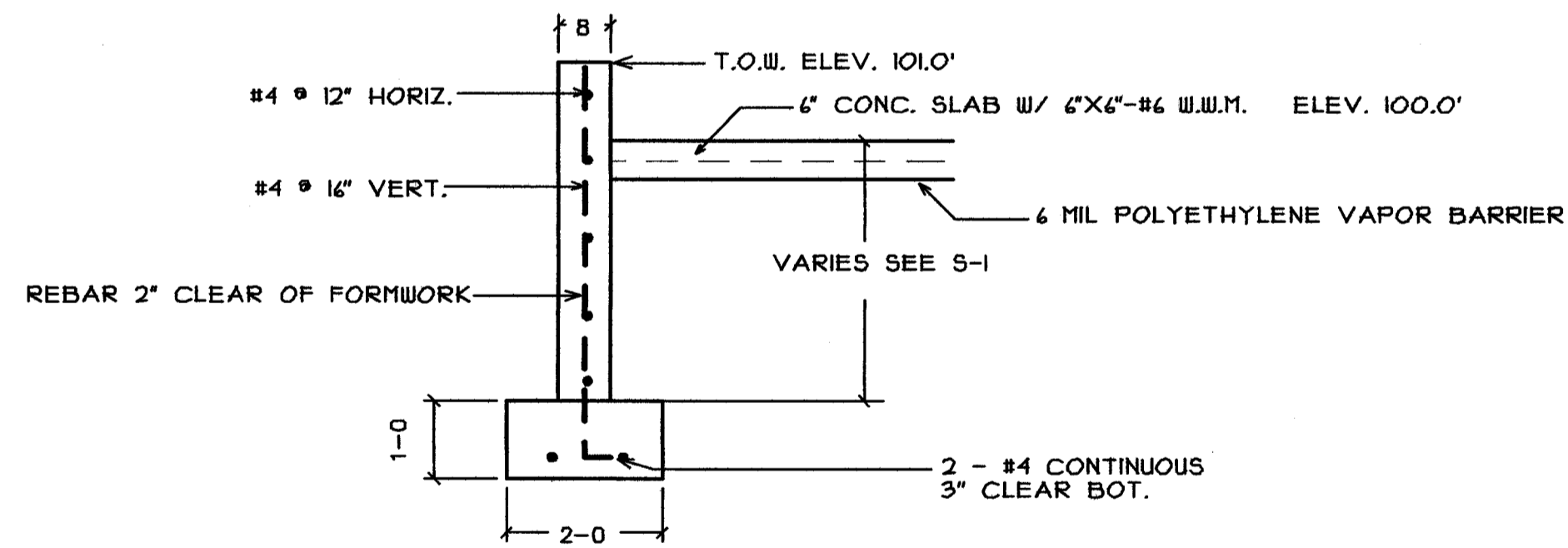
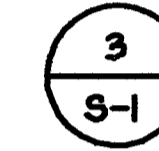
WALL SECTION

SCALE: 1/2"=1'-0"



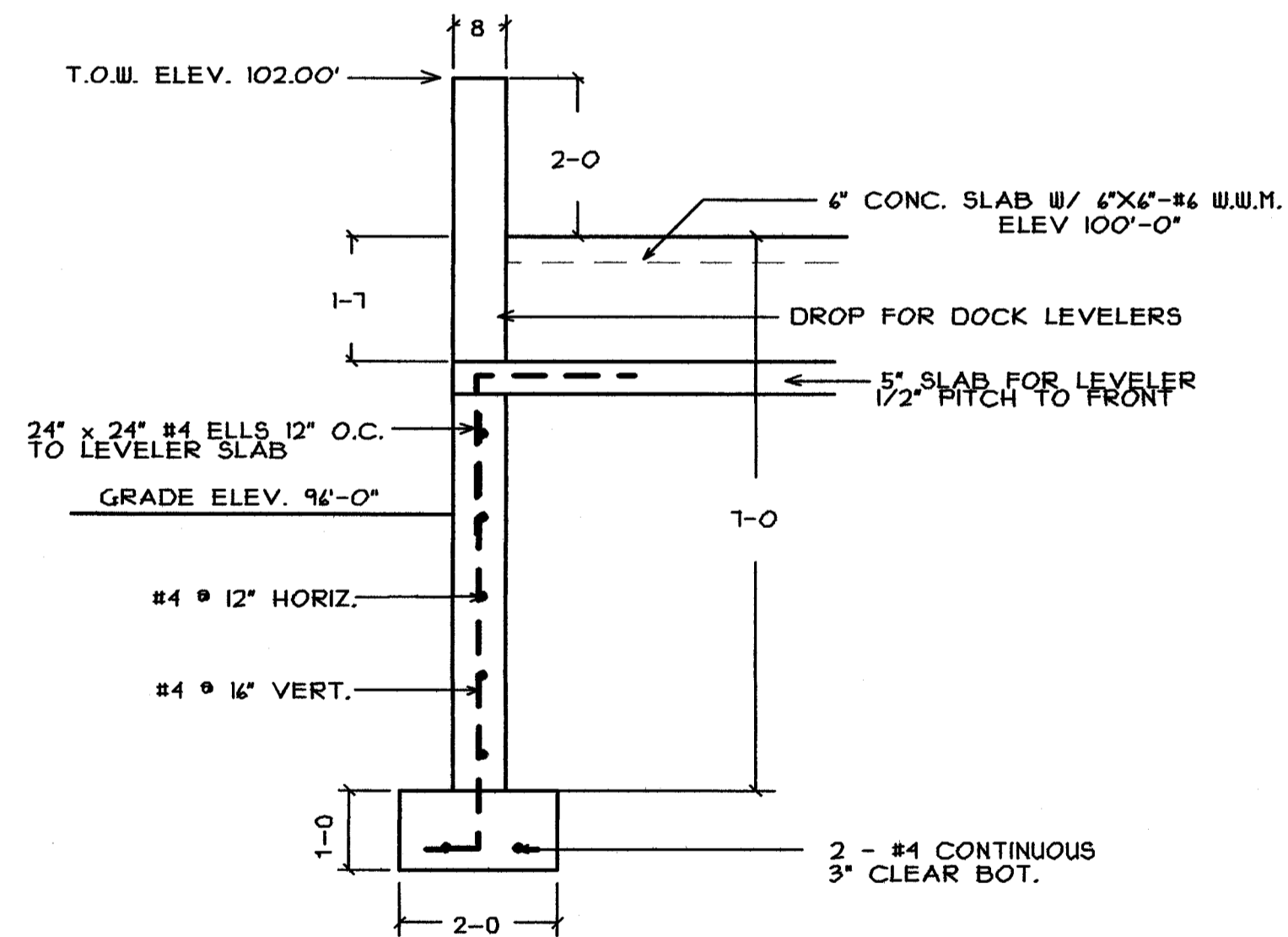
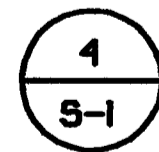
WALL SECTION

SCALE: 1/2"=1'-0"



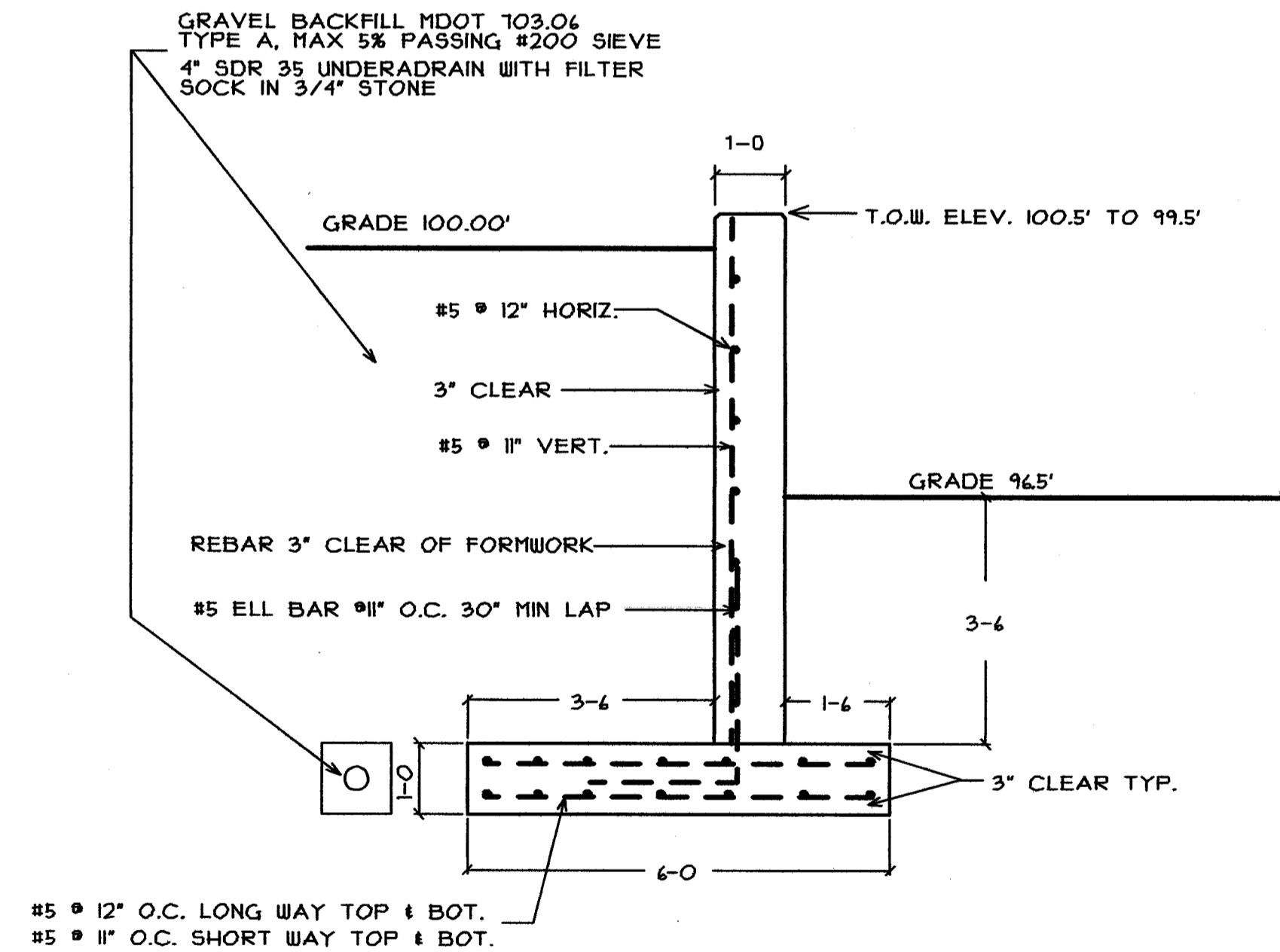
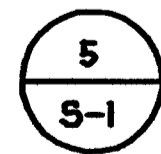
WALL SECTION

SCALE: 1/2"=1'-0"



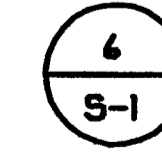
WALL SECTION

SCALE: 1/2"=1'-0"



RETAINING WALL

SCALE: 1/2"=1'-0"

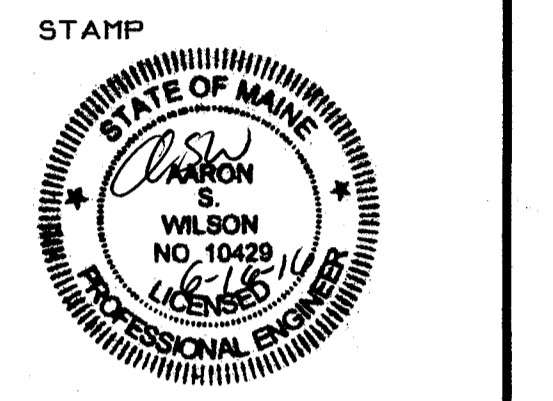


B
C
G

BISKUP CONSTRUCTION, INC.
16 DANIELLE DRIVE
WINDHAM, MAINE 04092
TEL. (207) 892-9800
FAX. (207) 892-9895

WWW.BISKUPCONSTRUCTION.COM

CONSULTANT
ASSOCIATED DESIGN PARTNERS INC.



PROJECT:
1039 RIVERSIDE LLC
1039 RIVERSIDE STREET
UNIT # 2
PORTLAND, MAINE

REVISIONS	
DATE	DESCRIPTION

DATE: 6/16/2016
SCALE: 1/2" = 1'-0"
DESIGNER: AW
CHECKED BY: JB

© COPYRIGHT
BISKUP CONSTRUCTION, INC.

SHEET TITLE
FOUNDATION DETAILS

SHEET NUMBER
S-2