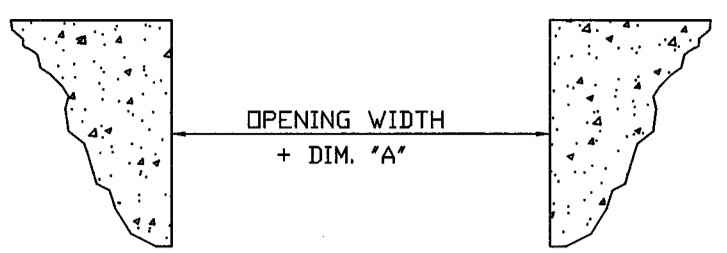


ELEVATION VIEW OF SUGGESTED DETAIL FOR OPENINGS WITH JAMBS TO FINISH FLOOR IN THE PRESENCE OF A RAISED FOUNDATION WALL.

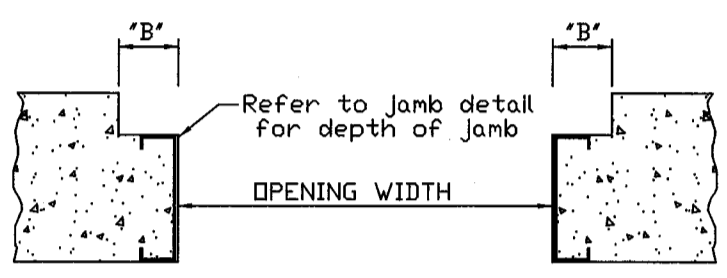


'A' = 4 1/2" FOR PRE-ASSEMBLED PERSONNEL DOORS
 = 5 1/2" FOR KNOCK-DOWN PERSONNEL DOORS
 = 7 1/2" FOR OPENINGS WITH COLD-ROLLED JAMBS
 = 8" FOR OPENINGS WITH STRUCTURAL JAMBS

ROUGH OPENING SIZES ABOVE ARE FOR PASS DOORS AND FRAMED OPENINGS FURNISHED BY PSS.
 FOUNDATION ENGINEER TO VERIFY WITH BUILDER ALL DOOR TYPES AND ASSOCIATED ROUGH OPENING SIZES.
 FOR DOORS NOT FURNISHED BY PSS, CONSULT DOOR SUPPLIER FOR OPENING DETAILS.

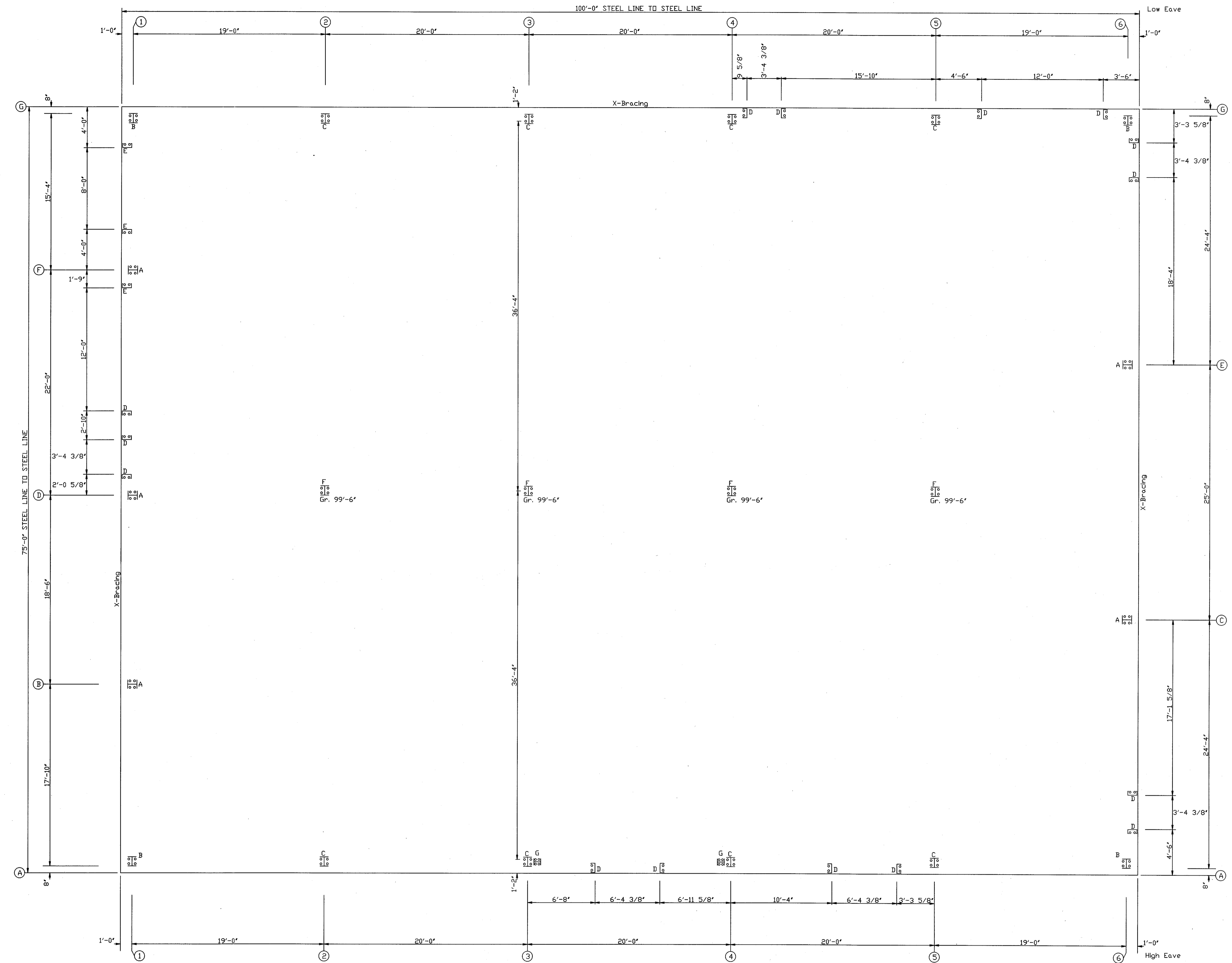
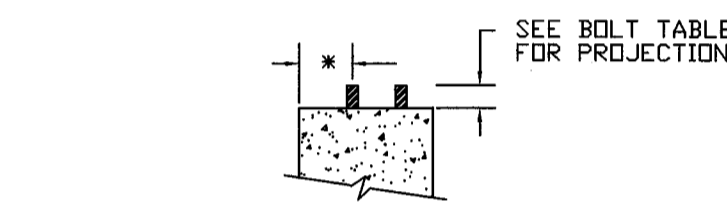
CLEARANCES SHOWN ARE MINIMUM REQUIRED FOR BASE CLIP. THERE MAY BE SMALL VOIDS BETWEEN JAMB FLANGES AND FOUNDATION WALL.

PLAN VIEW OF SUGGESTED DETAIL FOR FRAMED OPENINGS WITH JAMBS TO THE TOP OF A RAISED FOUNDATION WALL.

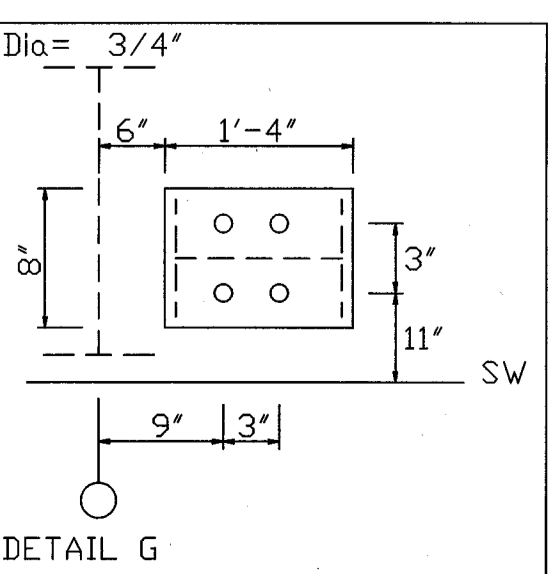
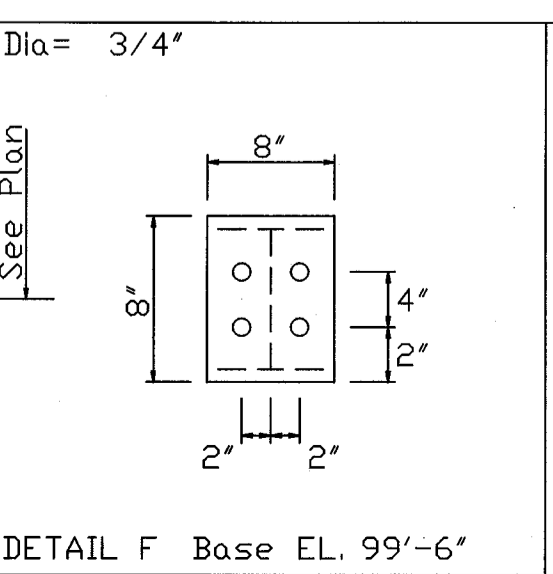
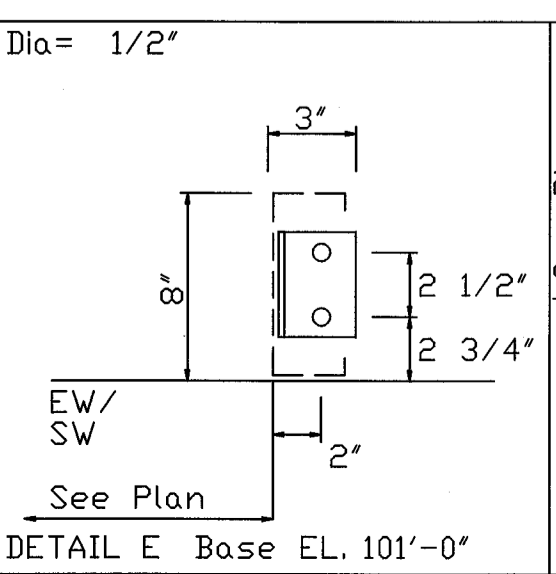
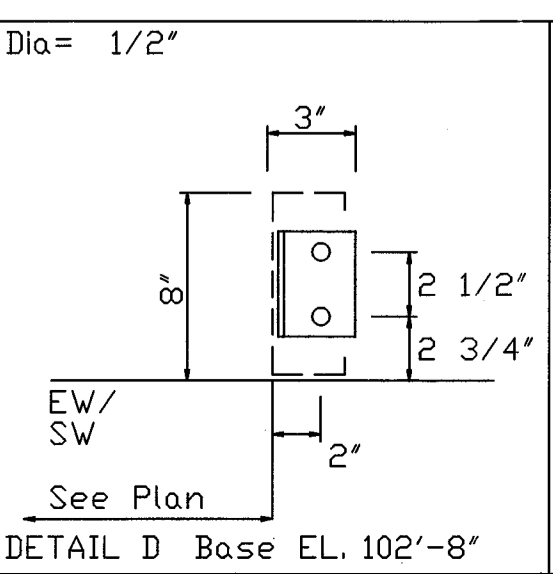
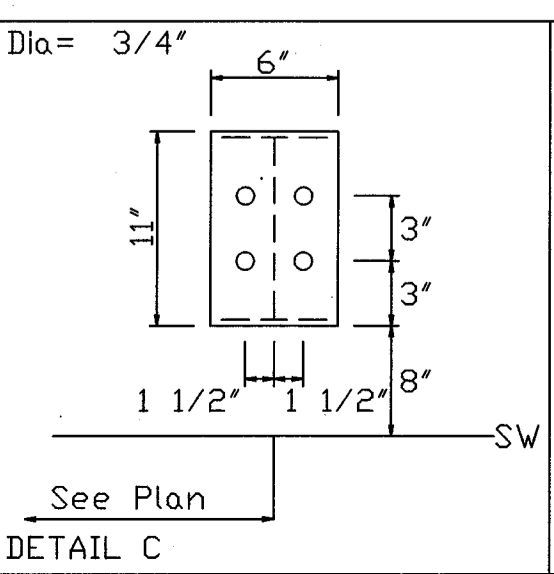
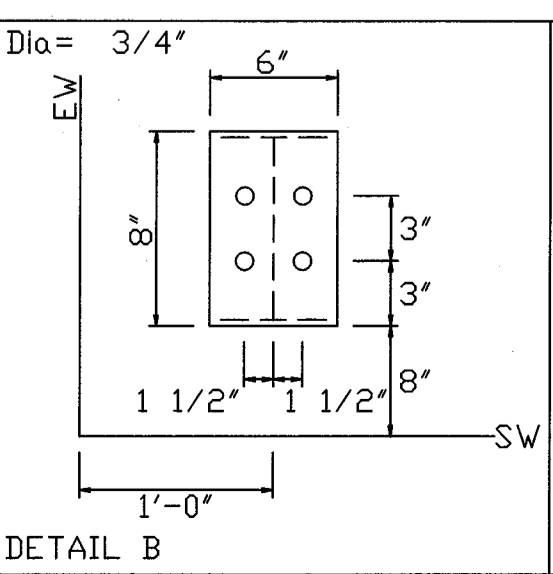
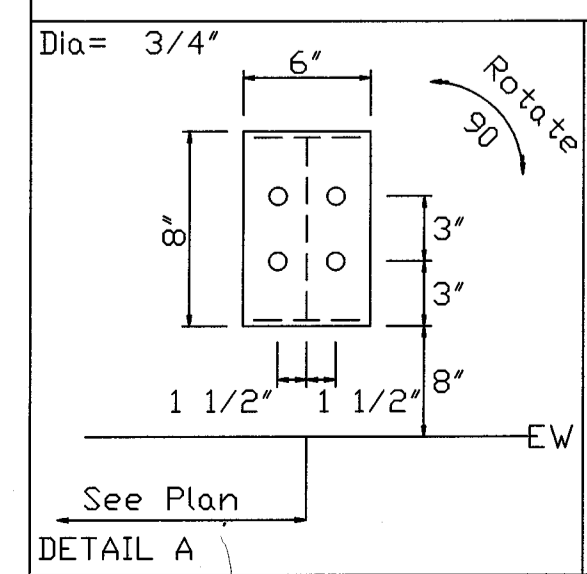
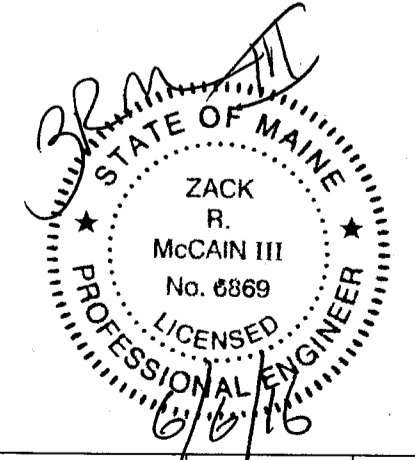


'B' = NOTCH FOR DOOR TRACK NOT BY PACKAGE STEEL SYSTEMS, INC. SEE MANUFACTURER RECOMMENDATIONS

* SEE COLUMN BASE DETAILS



ANCHOR BOLT PLAN
 NOTE: All Base Plates @ 100'-0" (U.N.)



REV.	DESCRIPTION	DATE	DRAFT	ENG.
3				
2				
1				
INITIAL DRAWING RELEASED FOR CONSTRUCTION PACKAGE STEEL SYSTEMS, INC. Biskup Construction Inc. PROJECT: Lot #2 Second Tee Business Park ANCHOR BOLT PLAN & DETAILS ID: 1605-038 DESIGN: ZRM DESIGN CHECK: ZRM PROJECT: 1076 Riverside Street DRAFT: TMZ DRAFT CHECK: TMZ ADDRESS: Portland, ME 04103 DATE: 6/03/16 DRAWING: ABLT-1				

