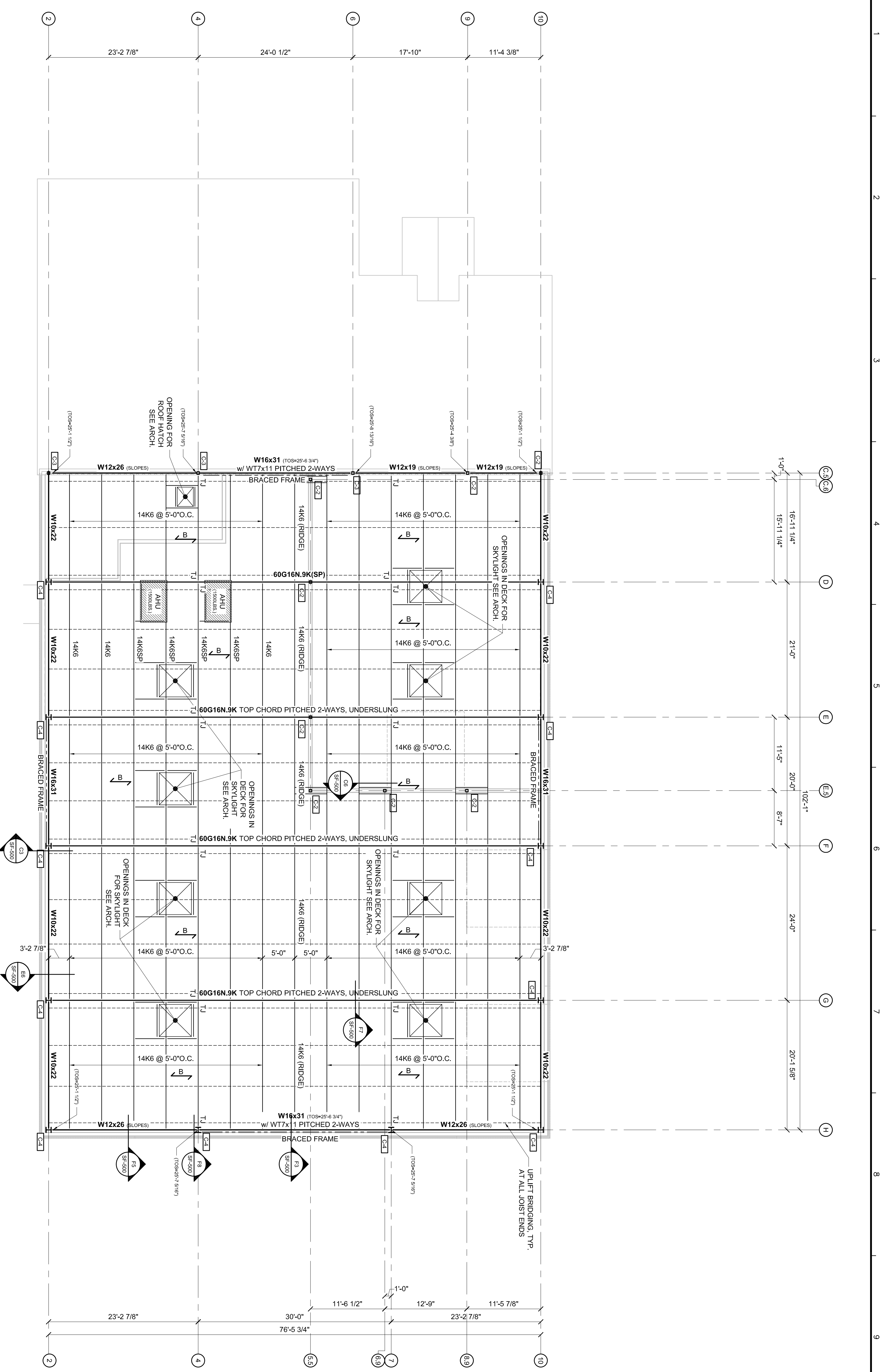
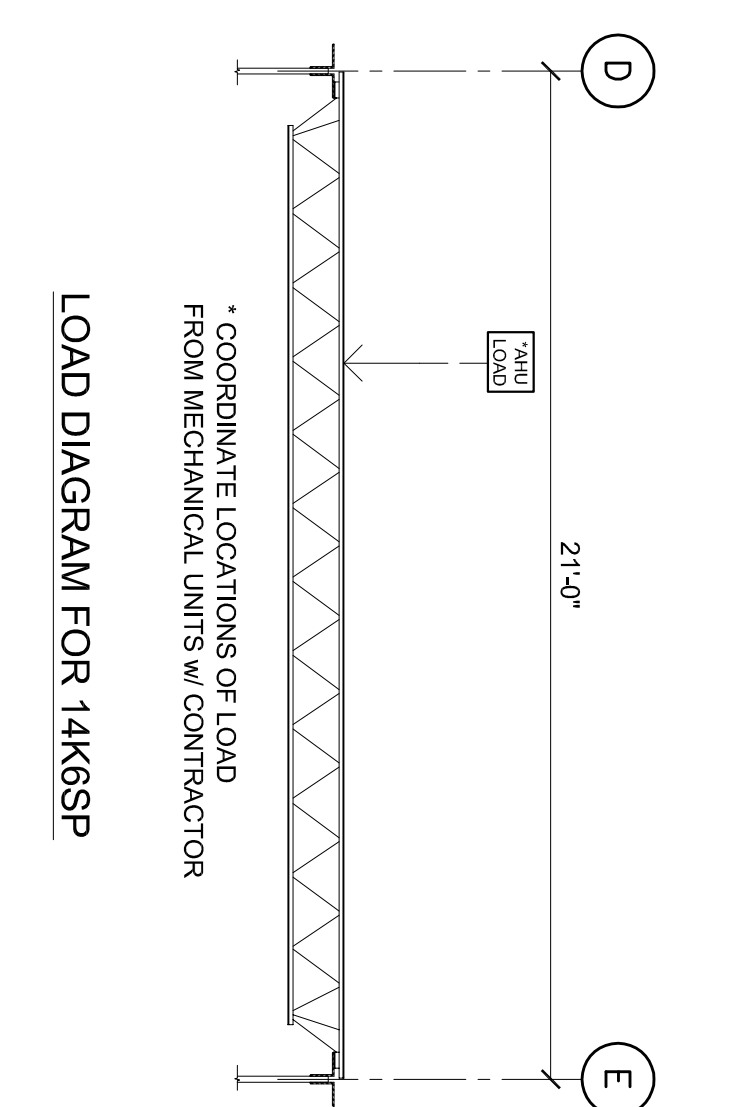
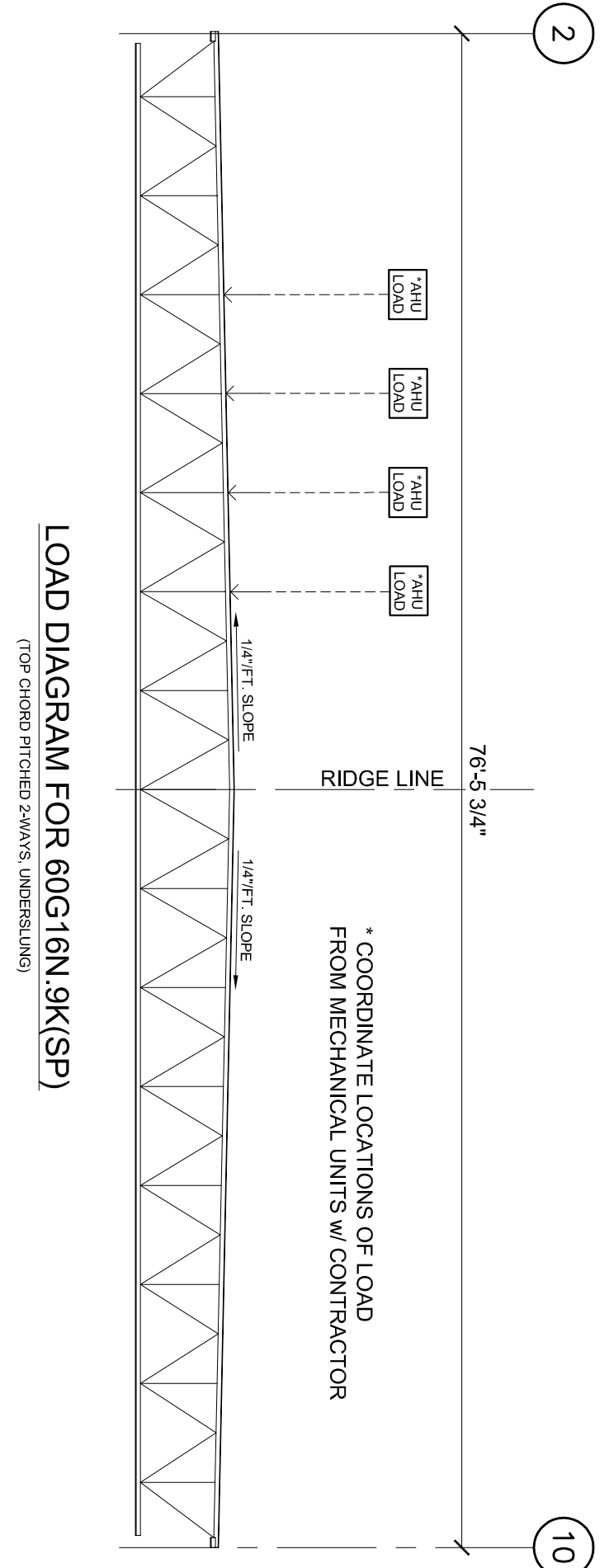


1/8" = 1'-0"

A1 HIGH ROOF FRAMING PLAN



- ROOF FRAMING PLAN NOTES:**
1. TOP OF STEEL ELEVATION = 25'-4" UNLESS NOTED (TOS)
  2. ALL BEAM TO BEAM CONNECTIONS TO BE DONE WITH A SINGLE PLATE CONNECTION, 3/8" THICK.
- ← B INDICATES SPAN OF 1 1/2" B-DECK - SEE SPECS.
- INDICATES TOP AND BOTTOM CHORD JOIST BRIDGING, UNLESS NOTED.

**ISSUED FOR CONSTRUCTION**

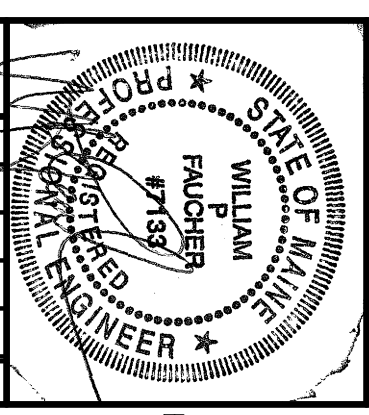
HIGH ROOF FRAMING PLAN

DELTA ROOFING  
PORTLAND, MAINE

Date: 08/09/2006  
 Drawn By: PED  
 Checked By: WPF  
 Project Mgr: WPF  
 Project No: 06029  
 Cad File: 06029SF.dwg  
 Graphic Scale: 0 1"

REVISIONS

NUMBER	DATE	BY	DESCRIPTION



**Allied Engineering**  
 Structural Mechanical Electrical Commissioning

160 Veranda Street  
 Portland, Maine 04103  
 T: 207.221.2260  
 F: 207.221.2266  
 Web: www.allied-eng.com

SF-101