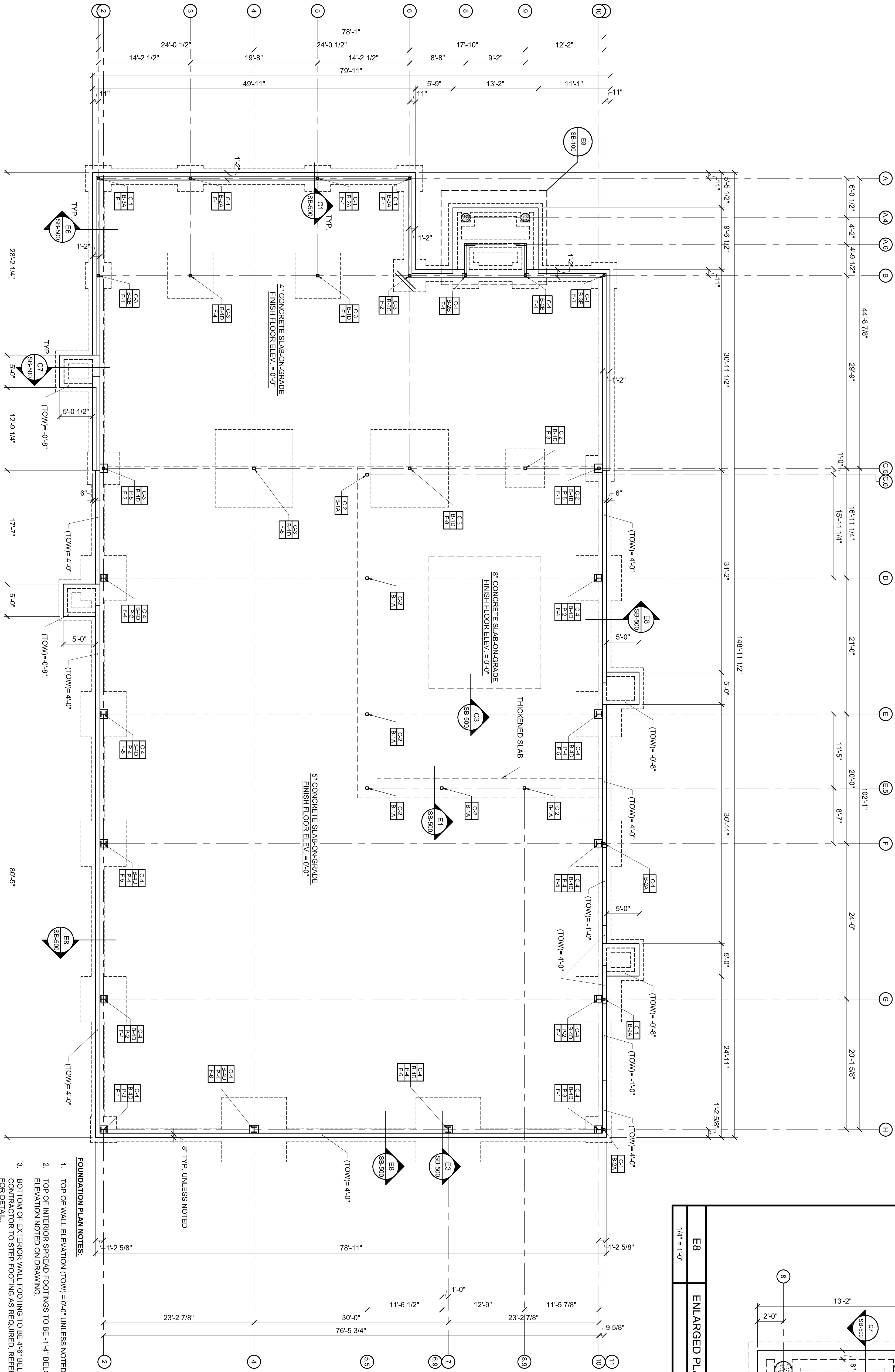


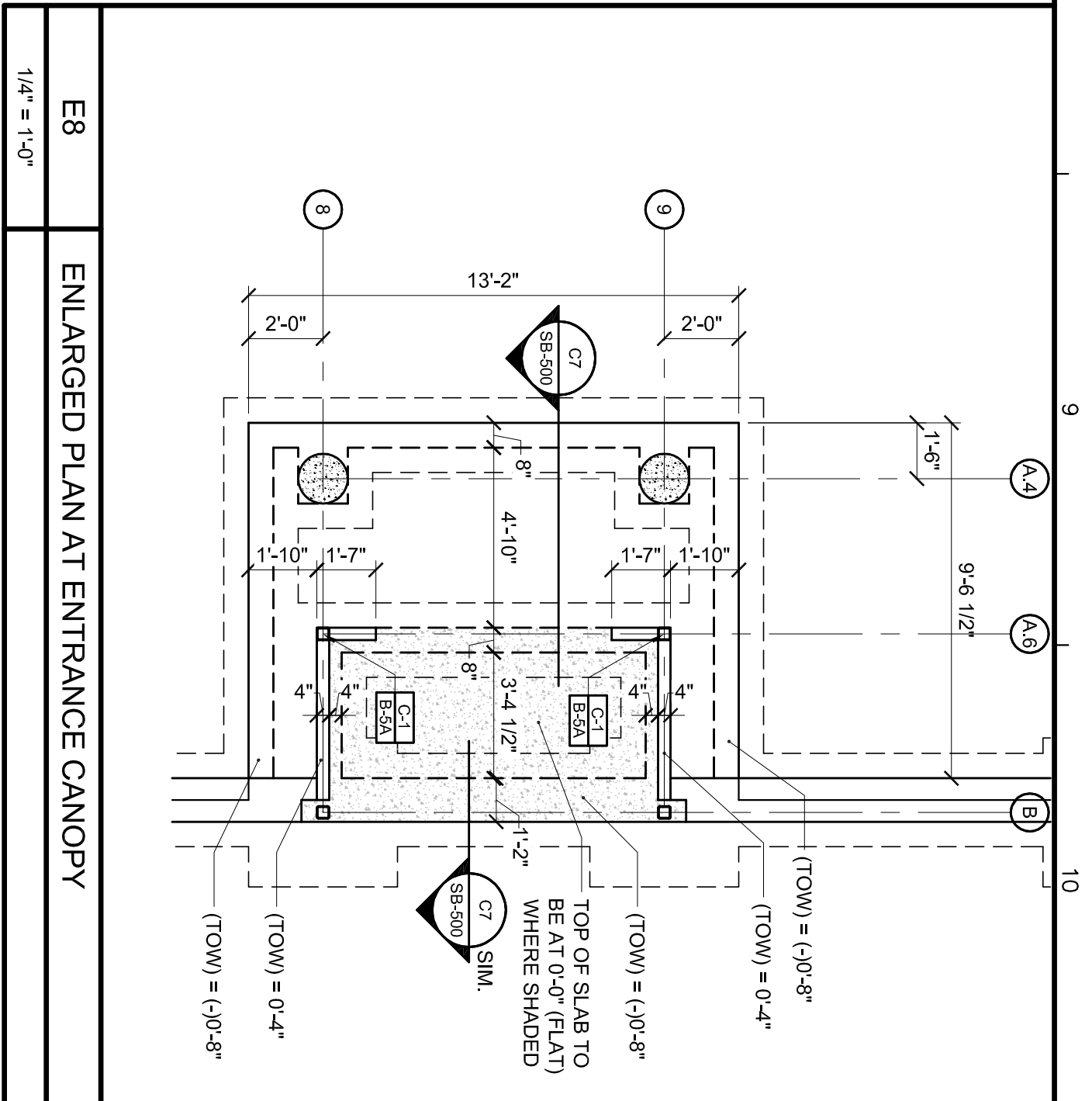
1/8" = 1'-0"

FOUNDATION PLAN

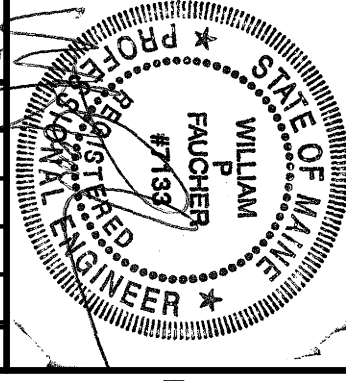


ISSUED FOR CONSTRUCTION

- FOUNDATION PLAN NOTES:**
1. TOP OF WALL ELEVATION (TOW) = 0'-0" UNLESS NOTED.
 2. TOP OF INTERIOR SPREAD FOOTINGS TO BE -1'-4" BELOW FINISHED SLAB ELEVATION NOTED ON DRAWINGS.
 3. BOTTOM OF EXTERIOR WALL FOOTING TO BE 4'-8" BELOW FINISHED GRADE. CONTACTOR TO STEP FOOTING AS REQUIRED, REFER TO SECTION DT/S001 FOR DETAIL.
 4. FOR LOCATIONS MARKED P-# SEE DRAWING SB-400 FOR ENLARGED PLAN VIEWS.
- [CA]** INDICATES COLUMN TYPE - SEE DRAWING S-000 FOR SCHEDULE.
[BA] INDICATES BASE PLATE TYPE - SEE DRAWING S-401 FOR SCHEDULE.
[FA] INDICATES FOOTING TYPE - SEE DRAWING S-000 FOR SCHEDULE.



REVISIONS				
NUMBER	DATE	BY	DESCRIPTION	



Allied Engineering
Structural Mechanical Electrical Commissioning

160 Veranda Street
Portland, Maine 04103
T: 207.221.2260
F: 207.221.2266
Web: www.allied-eng.com

SB-100

FOUNDATION PLAN

DELTA ROOFING

PORTLAND, MAINE

Date: 08/09/2006
 Drawn By: PED
 Checked By: WPF
 Project Mgr: WPF
 Project No: 06029
 Cad File: 06029SF-ROOF.dwg
 Graphic Scale: 0 1"