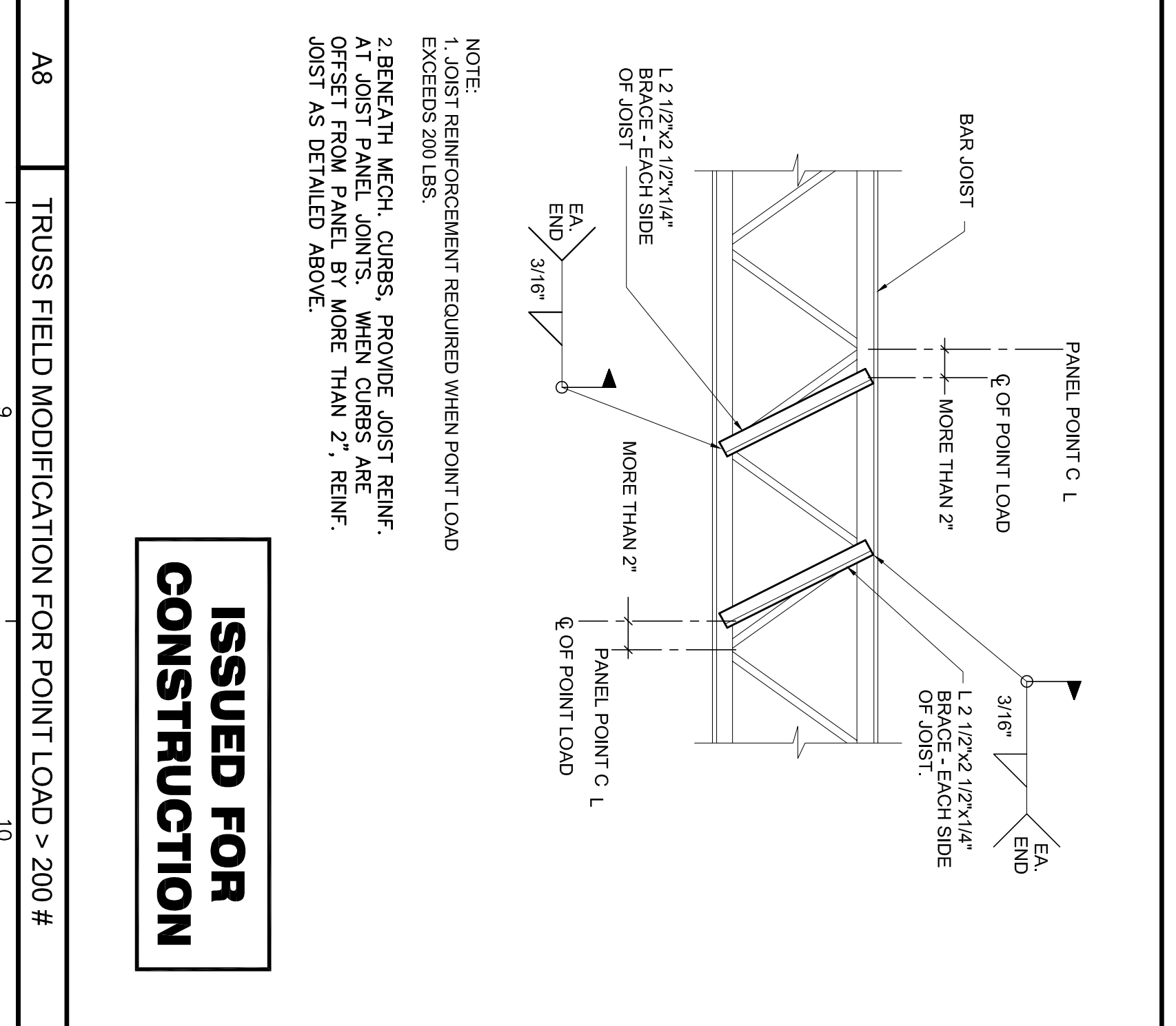
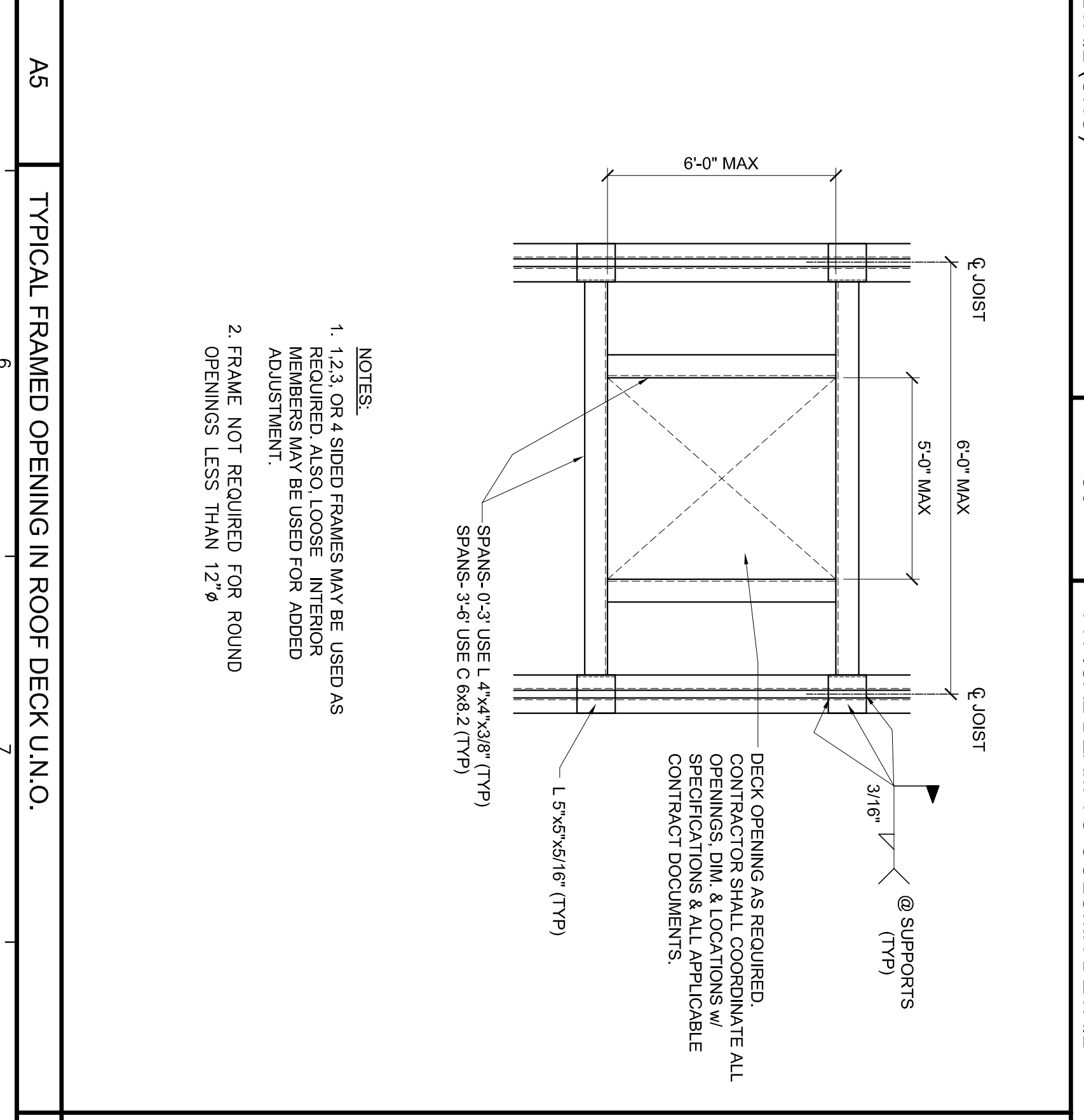
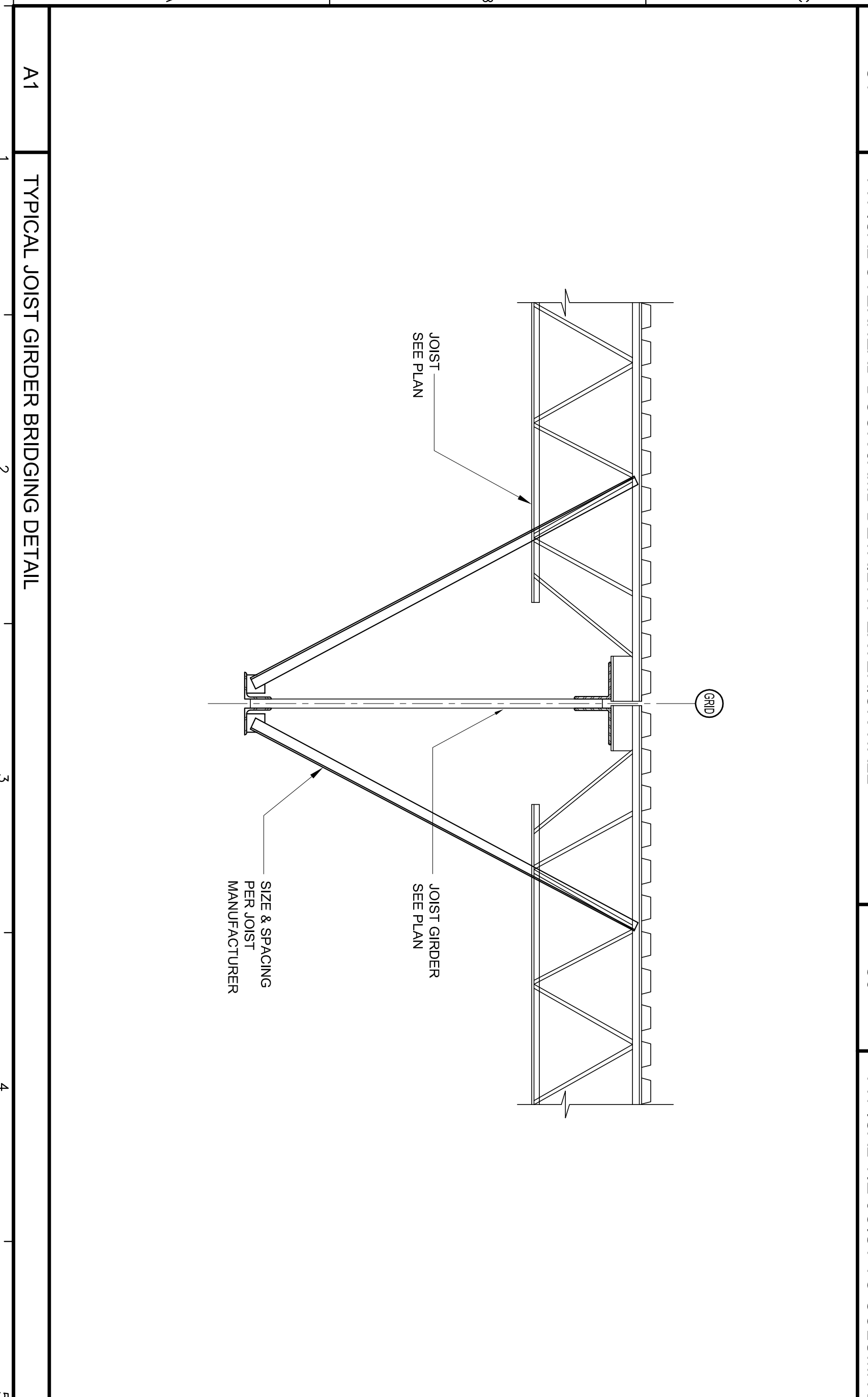


BEAM	N	L	T	D	S
W8	2	6'	3/8"	1"	3"
W10	2	6'	3/8"	1 1/2"	3"
W12	3	9'	3/8"	1 1/2"	3"
W14	3	9'	3/8"	1 1/2"	3"
W16	4	12'	3/8"	1 1/2"	3"
W18	5	15'	3/8"	1 1/2"	3"
W21	6	18'	3/8"	1 1/2"	3"
W24	6	18'	3/8"	1 1/2"	3"

**CONNECTION SCHEDULE**

NOTES:

- ALL BOLTS SHALL BE 3/4" DIA. A325N (U.N.O.)
- N = NUMBER OF BOLTS
- L = LENGTH OF PLATE
- T = THICKNESS OF PLATE
- D = DEPTH OF PLATE FROM TOP FLANGE OF BEAM
- S = BOLT SPACING



**ISSUED FOR CONSTRUCTION**

NOTE:  
 1. JOIST REINFORCEMENT REQUIRED WHEN POINT LOAD EXCEEDS 200 LBS.  
 2. BENEATH MECH. CURBS, PROVIDE JOIST REINFR. AT JOIST PANEL JOINTS. WHEN CURBS ARE OFFSET FROM PANEL BY MORE THAN 2" REINFR. JOIST AS DETAILED ABOVE.

NUMBER	DATE	BY	DESCRIPTION

REVISIONS

**S-002**

TYPICAL MISC. DETAILS

DELTA ROOFING  
 PORTLAND, MAINE

Date: 08/09/2006  
 Drawn By: PED  
 Checked By: WPF  
 Project Mgr: WPF  
 Project No: 06029  
 Cad File: 06029S0.dwg  
 Graphic Scale: 0 1"

**Allied Engineering**  
 Structural Mechanical Electrical Commissioning

160 Veranda Street  
 Portland, Maine 04103  
 T: 207.221.2260  
 F: 207.221.2266  
 Web: www.allied-eng.com

STATE OF MAINE  
 WILLIAM FAUBER  
 9753  
 REGISTERED PROFESSIONAL ENGINEER