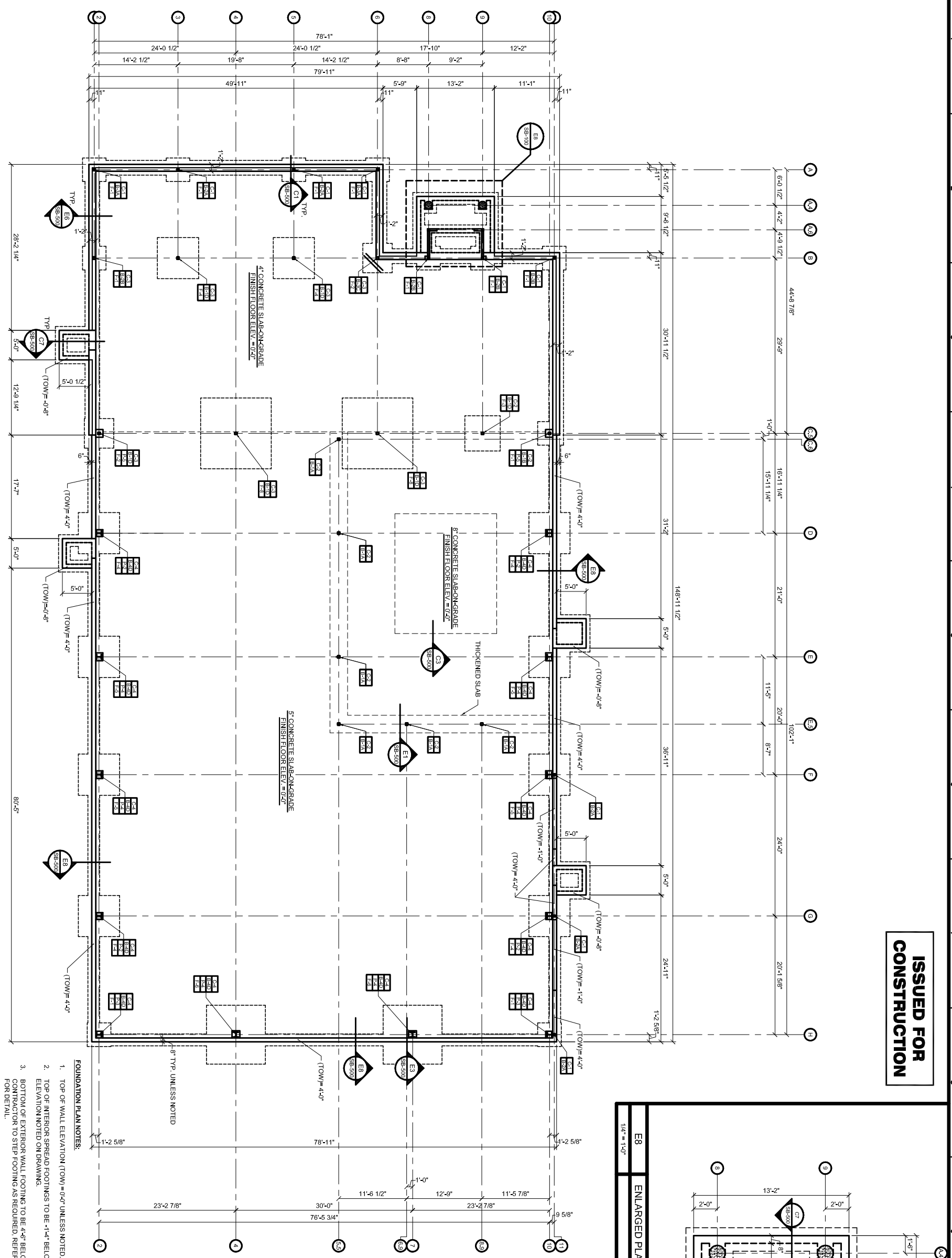


A1 FOUNDATION PLAN
1/8" = 1'-0"

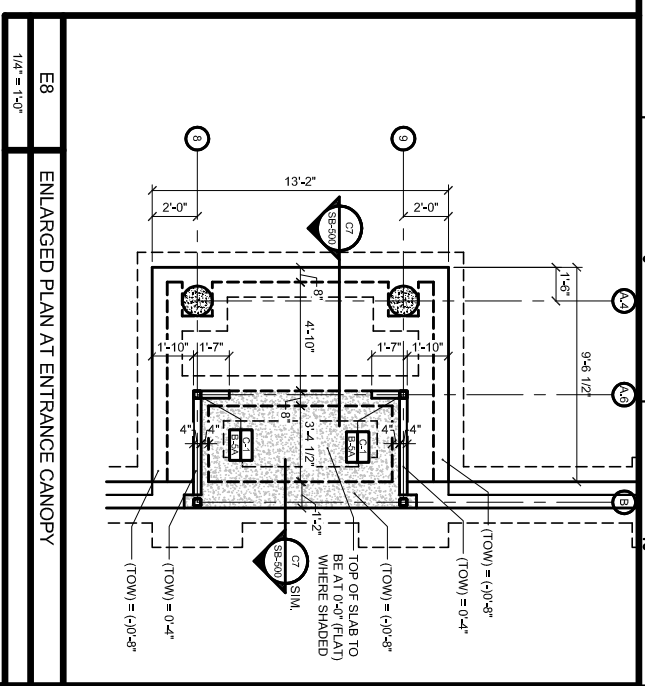


ISSUED FOR CONSTRUCTION

FOUNDATION PLAN NOTES:

1. TOP OF WALL ELEVATION (TOW) = 0'-0" UNLESS NOTED.
2. TOP OF INTERIOR SPREAD FOOTINGS TO BE -1'-4" BELOW FINISHED SLAB ELEVATION NOTED ON DRAWING.
3. BOTTOM OF EXTERIOR WALL FOOTING TO BE 4'-6" BELOW FINISHED GRADE. CONTRACTOR TO STEP FOOTING AS REQUIRED. REFER TO SECTION DIVS-001 FOR DETAIL.
4. FOR LOCATIONS MARKED P.# SEE DRAWING SB-500 FOR ENLARGED PLAN VIEWS.

- [C#] INDICATES COLUMN TYPE - SEE DRAWING S-400 FOR SCHEDULE.
- [B#X] INDICATES BASE PLATE TYPE - SEE DRAWING S-401 FOR SCHEDULE.
- [F#] INDICATES FOOTING TYPE - SEE DRAWING S-000 FOR SCHEDULE.



E8 ENLARGED PLAN AT ENTRANCE CANOPY
1/4" = 1'-0"

FOUNDATION PLAN
DELTA ROOFING
PORTLAND, MAINE

Date: 08/09/2006
Drawn By: PED
Checked By: WPF
Project Mgr: WPF
Project No: 06029
Cad File: 06029SF-ROOF.dwg
Graphic Scale: 0 1"

REVISIONS

NUMBER	DATE	BY	DESCRIPTION



Allied Engineering
Structural Mechanical Electrical Commissioning

160 Veranda Street
Portland, Maine 04103
T: 207.221.2260
F: 207.221.2266
Web: www.allied-eng.com

SB-100