



10  
4,800 S.F.  
F.F.E. = 68.0

SMH  
RIM: 66.67  
INV. IN: 62.67  
INV. OUT: 61.13

SMH 1  
RIM = 67.5  
6" INV IN = TBD  
6" INV OUT = TBD

SMH 2  
RIM = 68.1  
6" INV IN = TBD  
6" INV OUT = TBD

6" SANITARY SEWER  
L = 41'  
S = 0.0104 (MIN)

SMH 2  
RIM = 68.3  
6" INV IN = TBD  
6" INV OUT = TBD

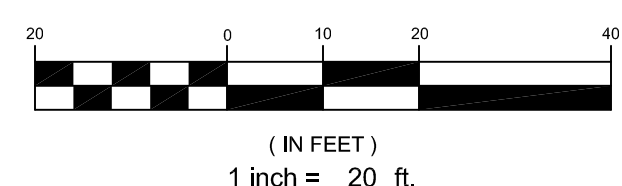
6" SANITARY SEWER  
L = 31'  
S = 0.0104 (MIN)

11  
F.F.E. = 69.00  
12,625 SF  
(SPRINKLERED)  
(ORIGINAL BUILDING SIZE WAS 8,400 SF)

EXISTING BUILDING.  
F.F.E. = 69.7

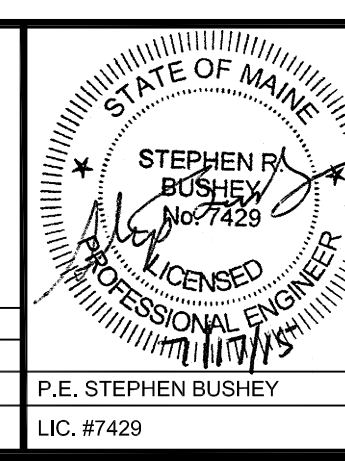
12

5



PRELIMINARY - NOT FOR CONSTRUCTION

REV	DATE	DESCRIPTION	REVISIONS
2	07.17.15	REVISED SUBMISSION TO CITY	
1	06.12.15	AMENDED SITE PLAN SUBMISSION	



PROJECT	SECOND TEE CONDOMINIUM ASSOCIATION BUSINESS PARK EXPANSION
SHEET TITLE	UNIT 11 SITE LAYOUT AND UTILITY PLAN
CLIENT	1039 RIVERSIDE LLC

<b>FST</b> <b>FAY, SPOFFORD &amp; THORNDIKE</b> ENGINEERS - PLANNERS - SCIENTISTS 778 MAIN ST, SUITE 8, SOUTH PORTLAND, ME 04106	
DRAWN: DED	DATE: MAY 2015
DESIGNED: SRB	SCALE: 1" = 20'
CHECKED: SRB	JOB NO. SP-M164
FILE NAME: SP-M164 SITE	
SHEET	C-4