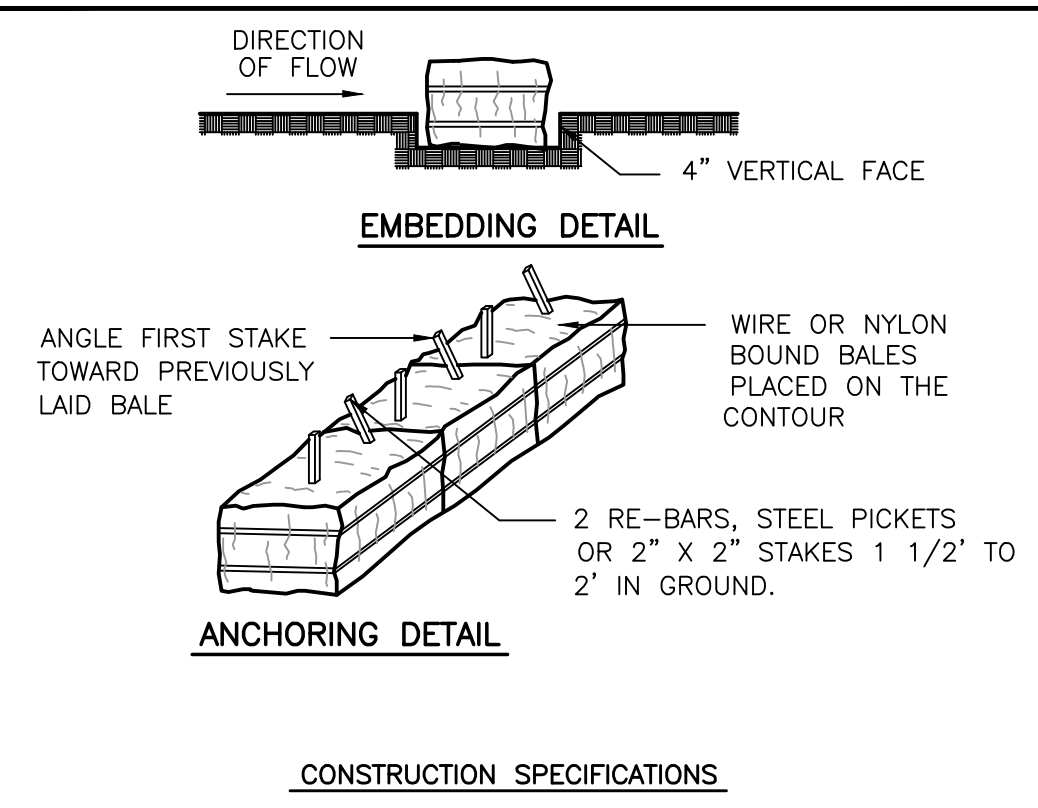
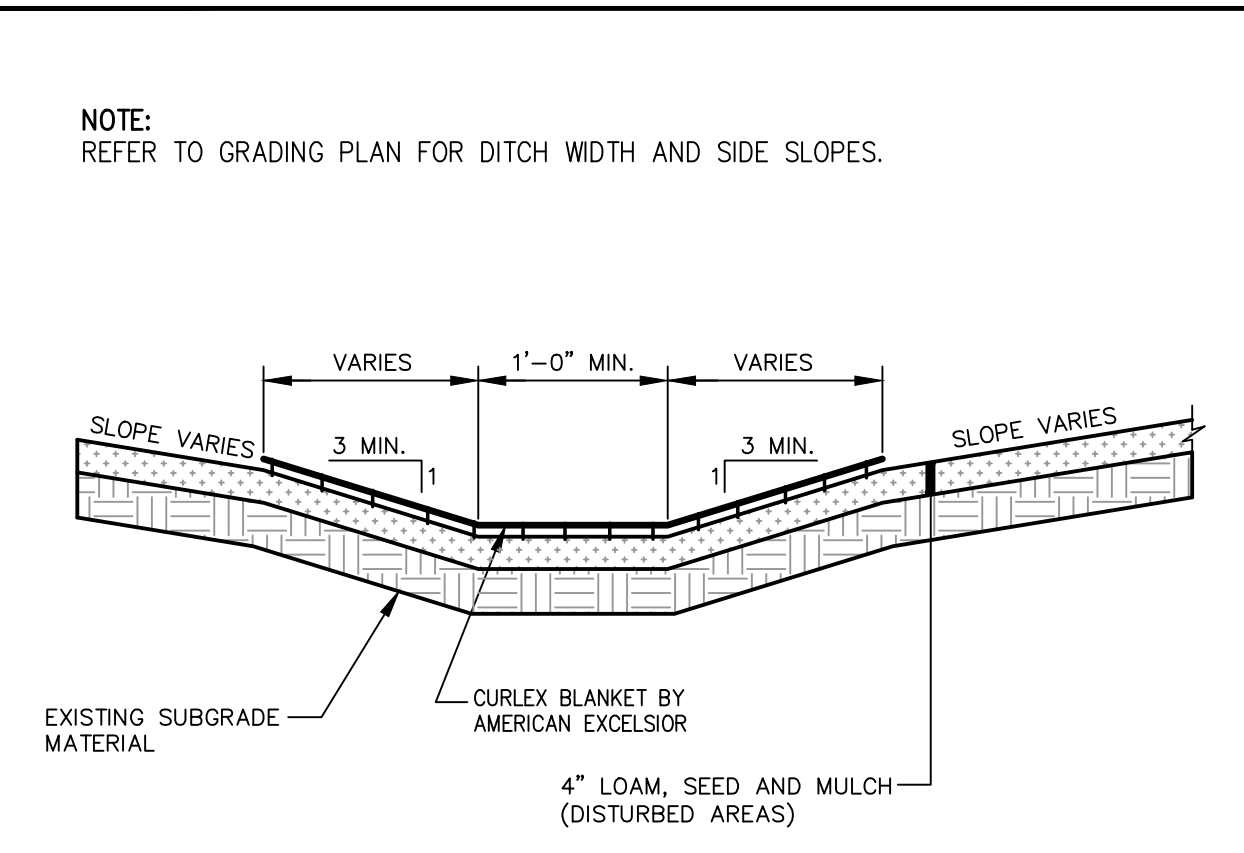


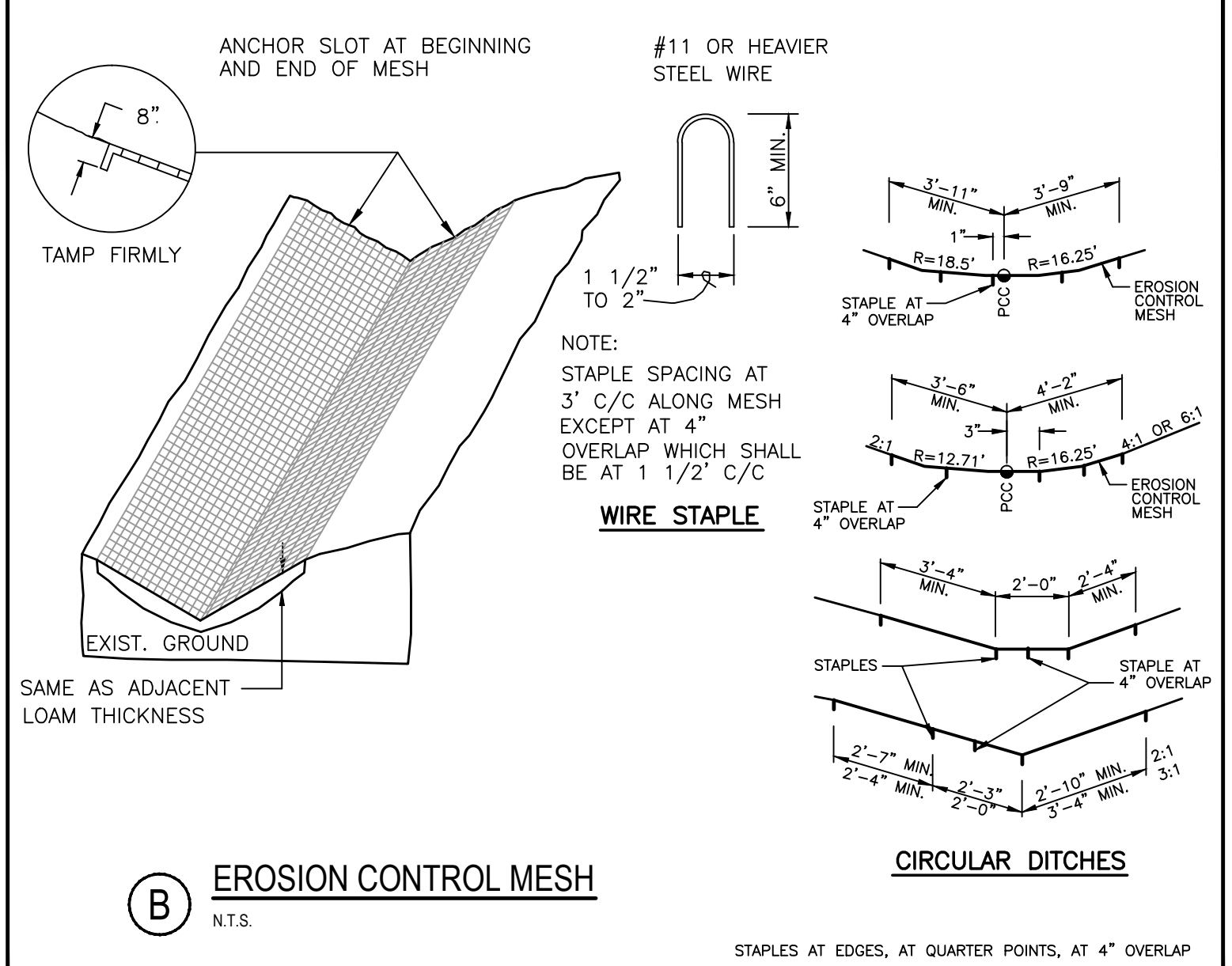
(A) STABILIZED CONSTRUCTION ENTRANCE
N.T.S.



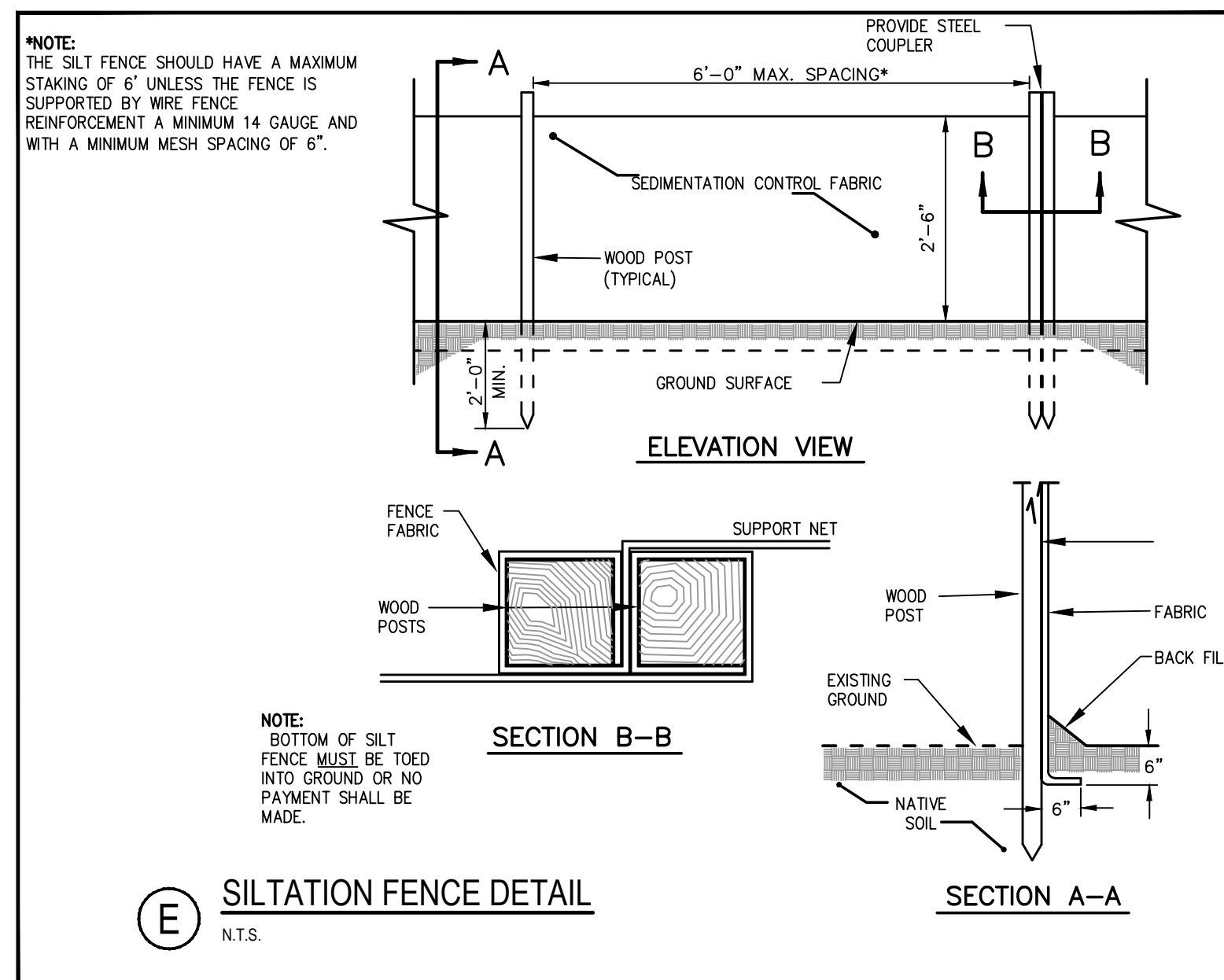
(D) STRAW OR HAY BALE BARRIERS
N.T.S.



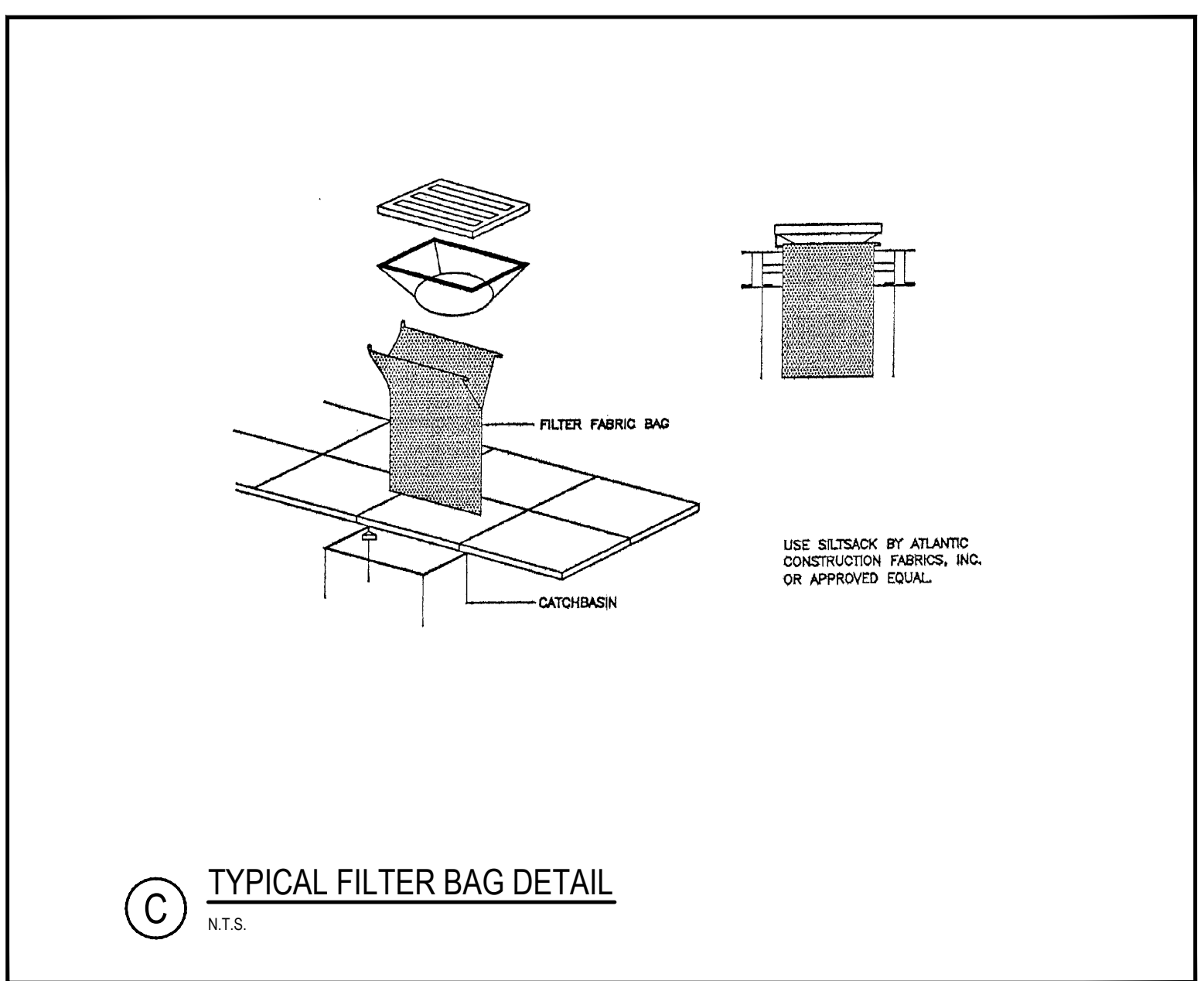
(G) VEGETATED DRAINAGE SWALE
N.T.S.



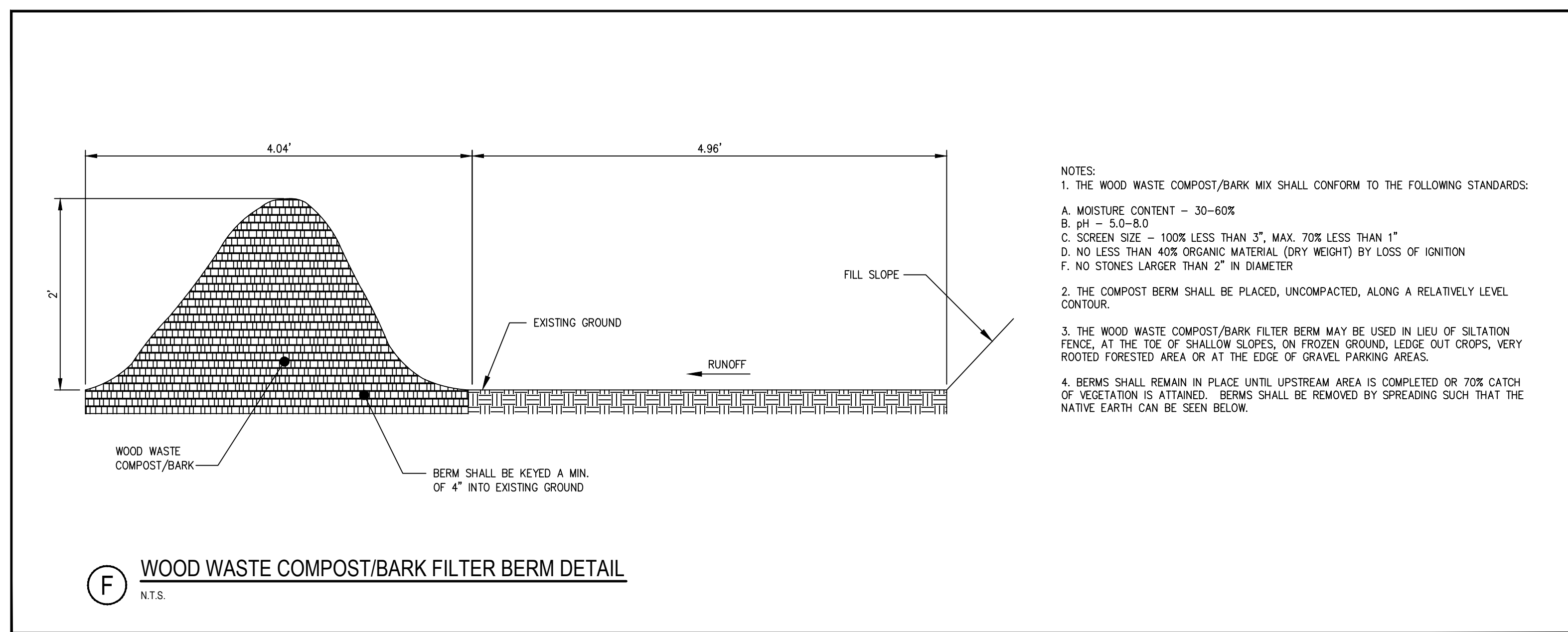
(B) EROSION CONTROL MESH
N.T.S.



(E) SILTATION FENCE DETAIL
N.T.S.



(C) TYPICAL FILTER BAG DETAIL
N.T.S.

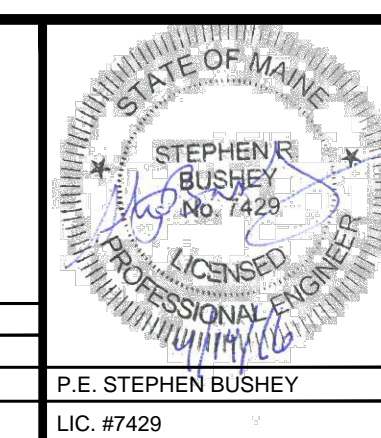


(F) WOOD WASTE COMPOST/BARK FILTER BERM DETAIL
N.T.S.

- NOTES:
1. THE WOOD WASTE COMPOST/BARK MIX SHALL CONFORM TO THE FOLLOWING STANDARDS:
 A. MOISTURE CONTENT - 30-60%
 B. pH - 5.0-8.0
 C. SCREEN SIZE - 100% LESS THAN 3", MAX. 70% LESS THAN 1"
 D. NO LESS THAN 40% ORGANIC MATERIAL (DRY WEIGHT) BY LOSS OF IGNITION
 F. NO STONES LARGER THAN 2" IN DIAMETER
 2. THE COMPOST BERM SHALL BE PLACED, UNCOMPACTED, ALONG A RELATIVELY LEVEL CONTOUR.
 3. THE WOOD WASTE COMPOST/BARK FILTER BERM MAY BE USED IN LIEU OF SILTATION FENCE, AT THE TOE OF SHALLOW SLOPES, ON FROZEN GROUND, LEDGE OUT CROPS, VERY ROOTED FORESTED AREA OR AT THE EDGE OF GRAVEL PARKING AREAS.
 4. BERMS SHALL REMAIN IN PLACE UNTIL UPSTREAM AREA IS COMPLETED OR 70% CATCH OF VEGETATION IS ATTAINED. BERMS SHALL BE REMOVED BY SPREADING SUCH THAT THE NATIVE EARTH CAN BE SEEN BELOW.

PRELIMINARY - NOT FOR CONSTRUCTION

REV	DATE	DESCRIPTION
2	04.14.16	REVISED SUBMISSION TO CITY OF PORTLAND
1	02.25.16	AMENDED SITE PLAN SUBMISSION



PROJECT SECOND TEE CONDOMINIUM ASSOCIATION BUSINESS PARK EXPANSION - UNIT 2	
SHEET TITLE EROSION CONTROL DETAILS	
CLIENT 1039 RIVERSIDE LLC	

STANTEC CONSULTING SERVICES INC. 482 PAYNE ROAD SCARBOROUGH, ME 04074 WWW.STANTEC.COM	
DRAWN: DED	DATE: FEB 2016
DESIGNED: SRB	SCALE: AS NOTED
CHECKED: SRB	JOB NO. 195350348
FILE NAME: SP-M168 DETAILS	
SHEET	C-9