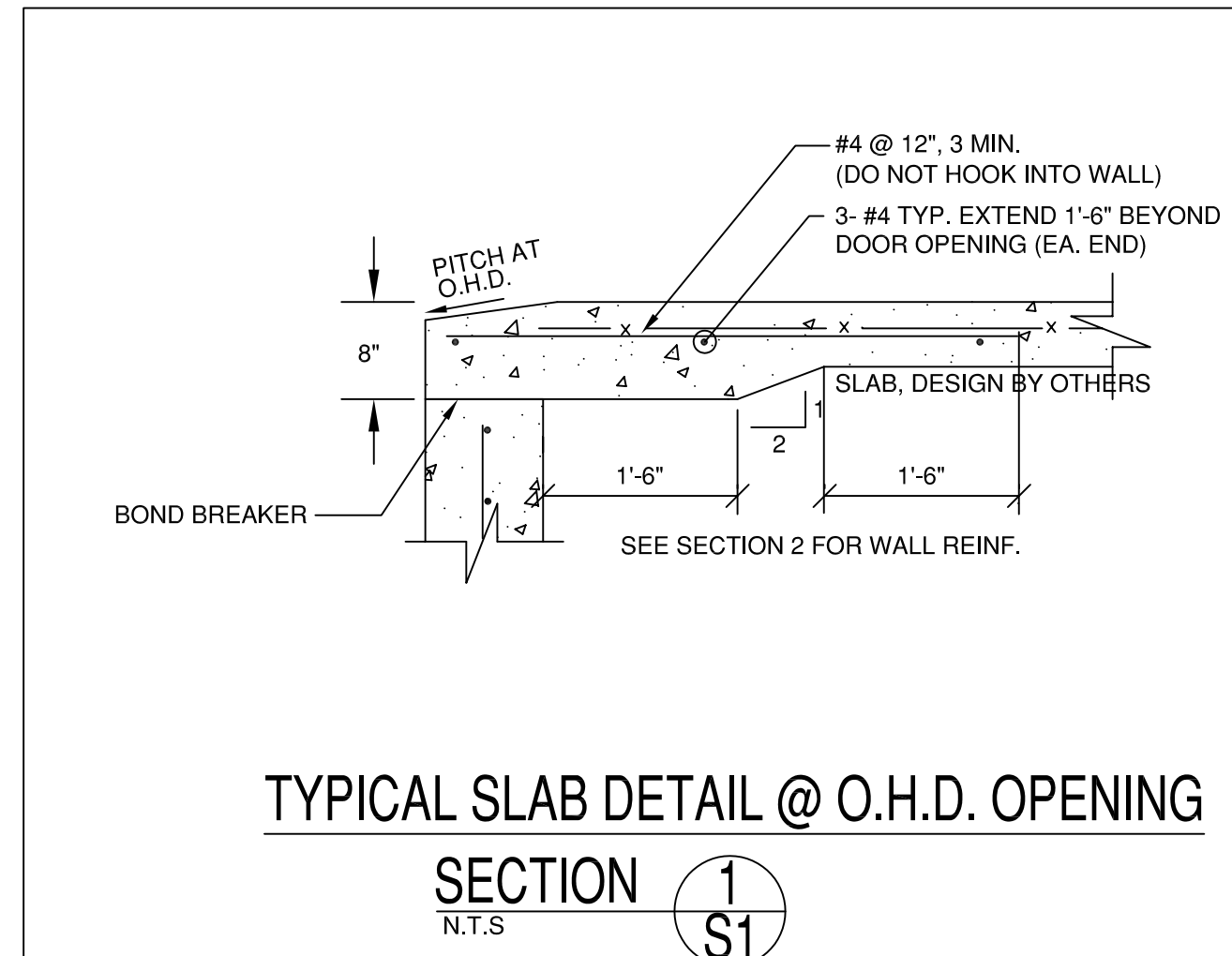
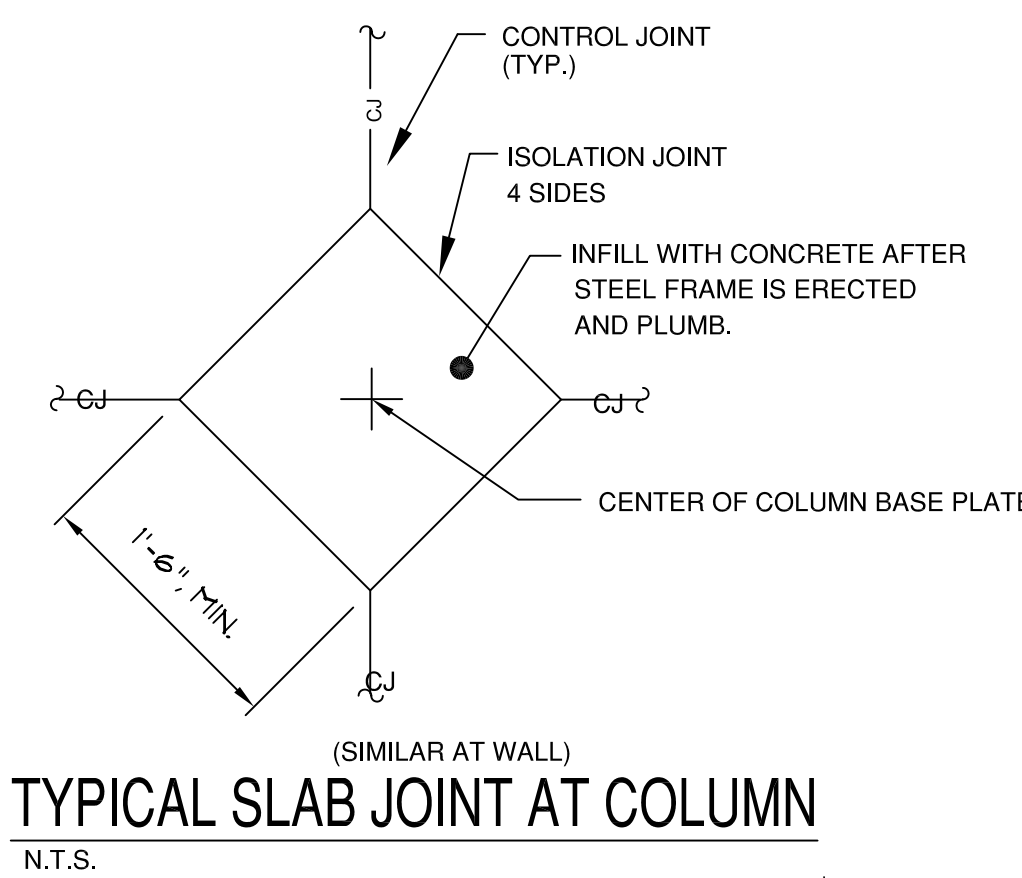
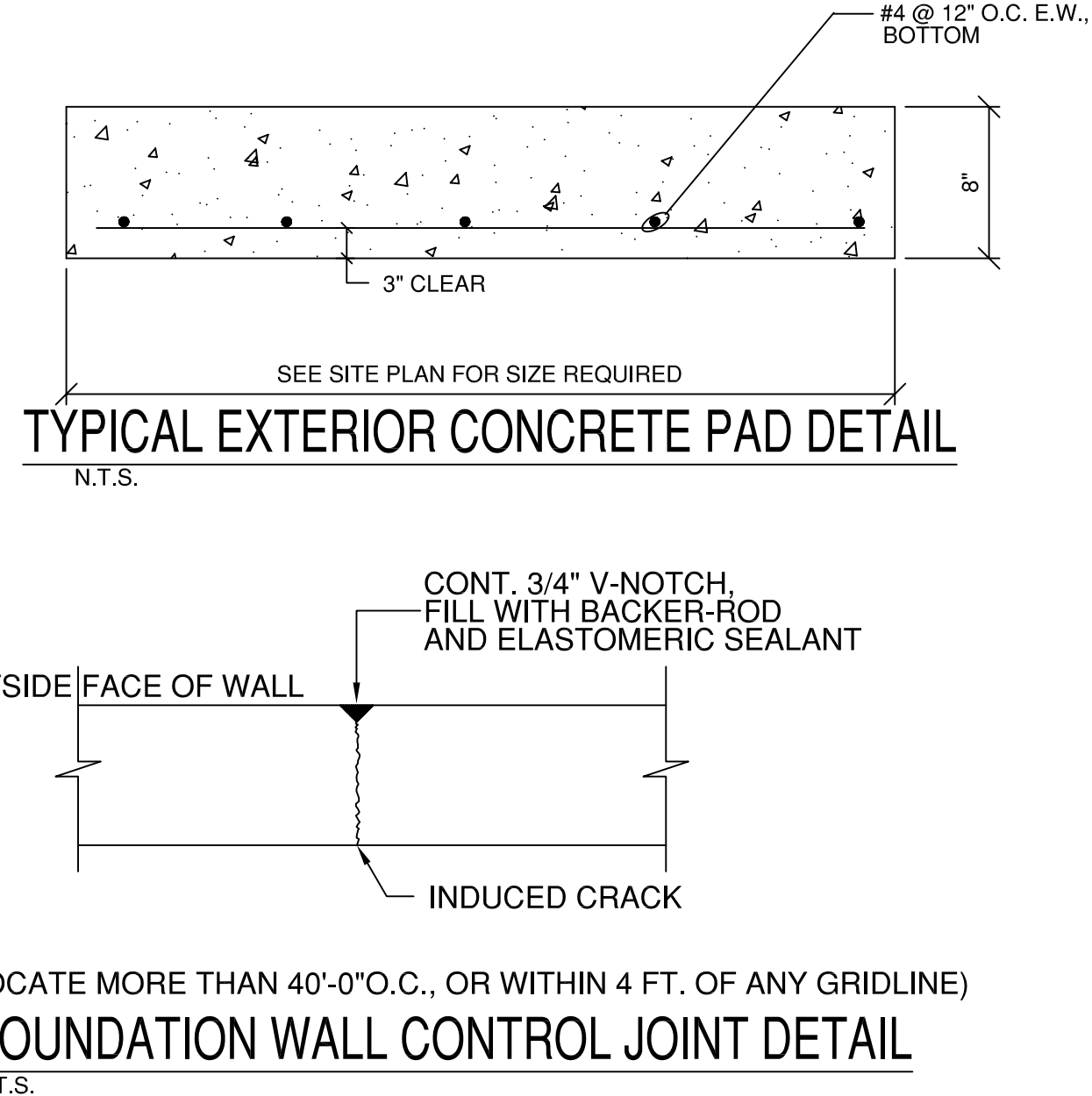
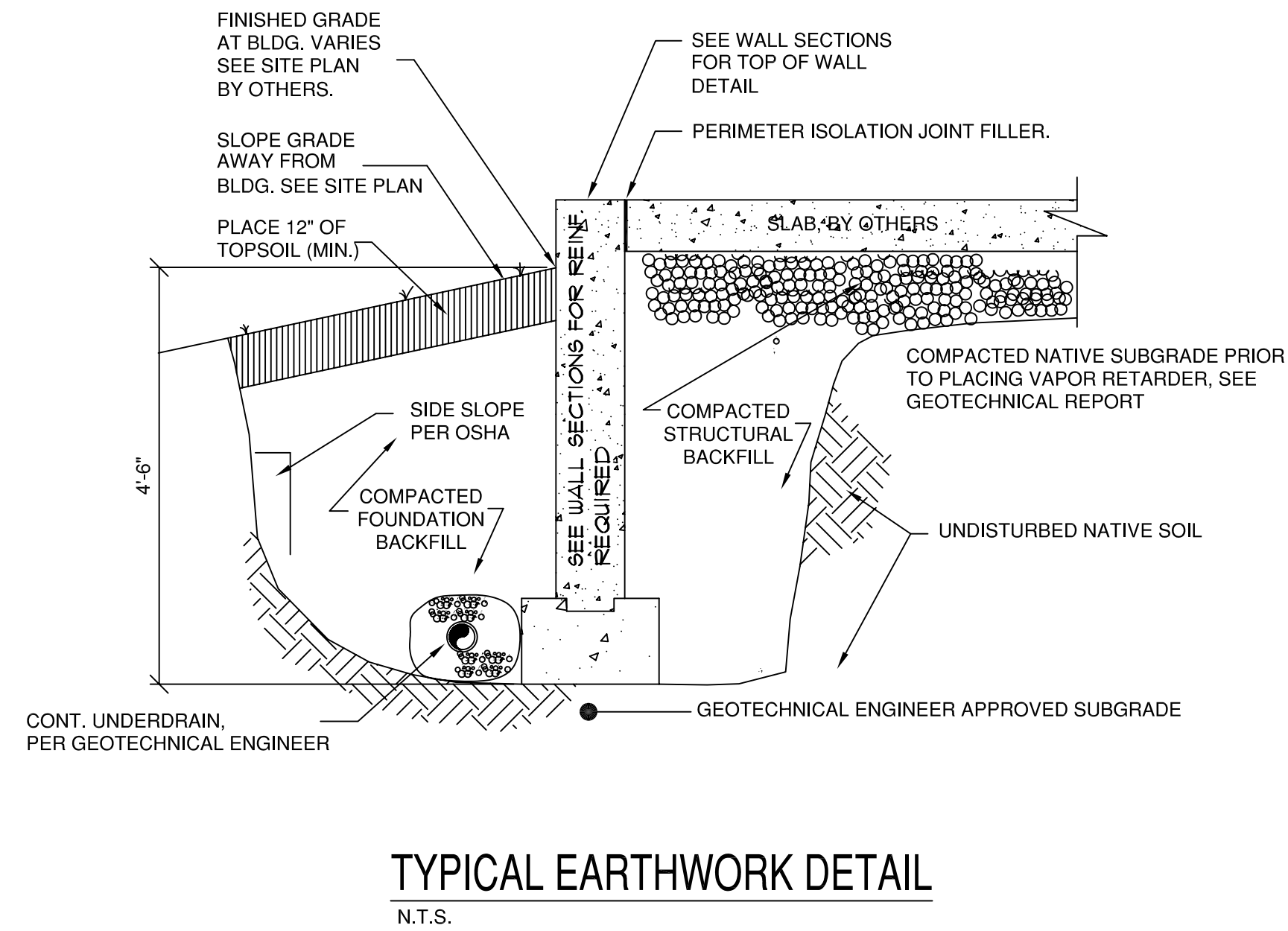
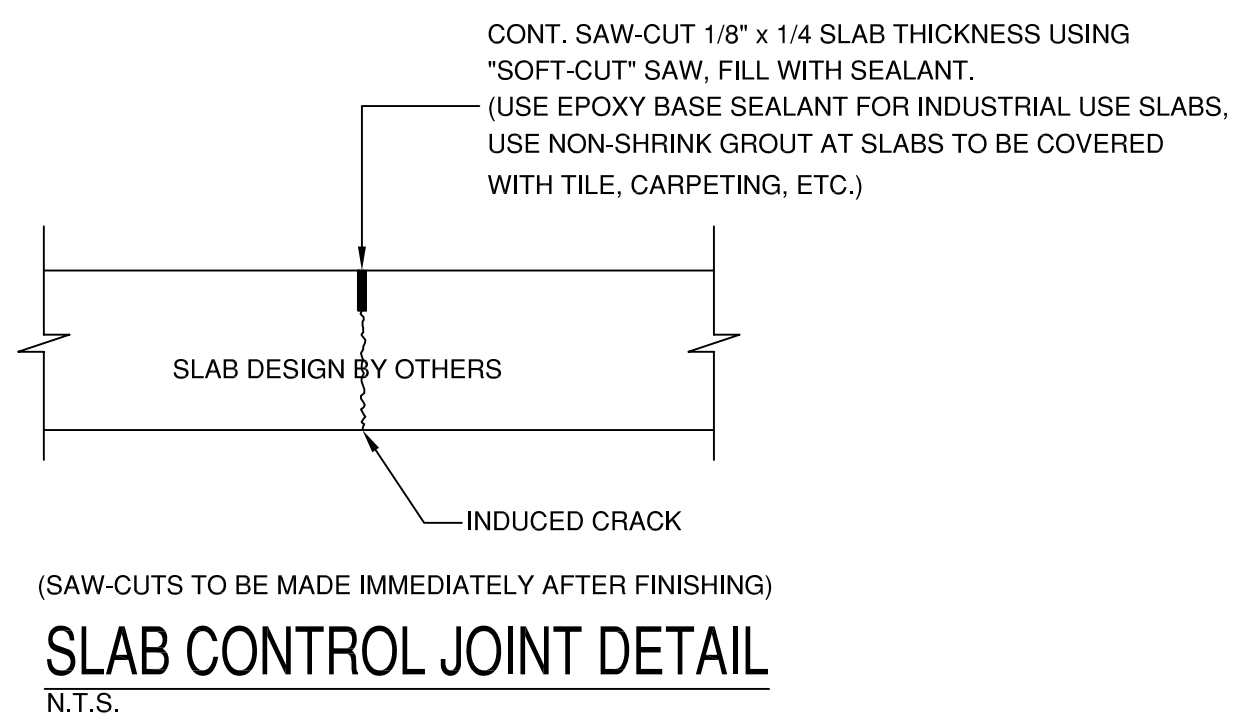
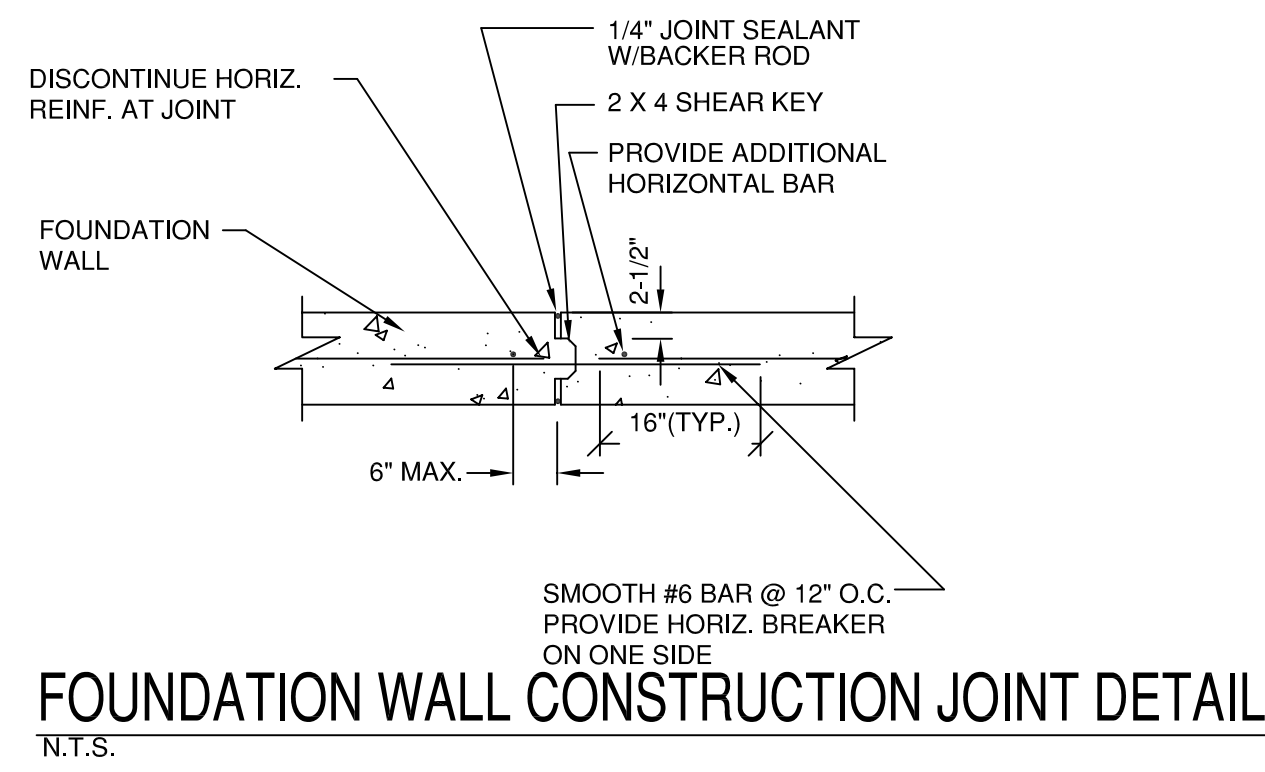


ISSUED FOR CONSTRUCTION



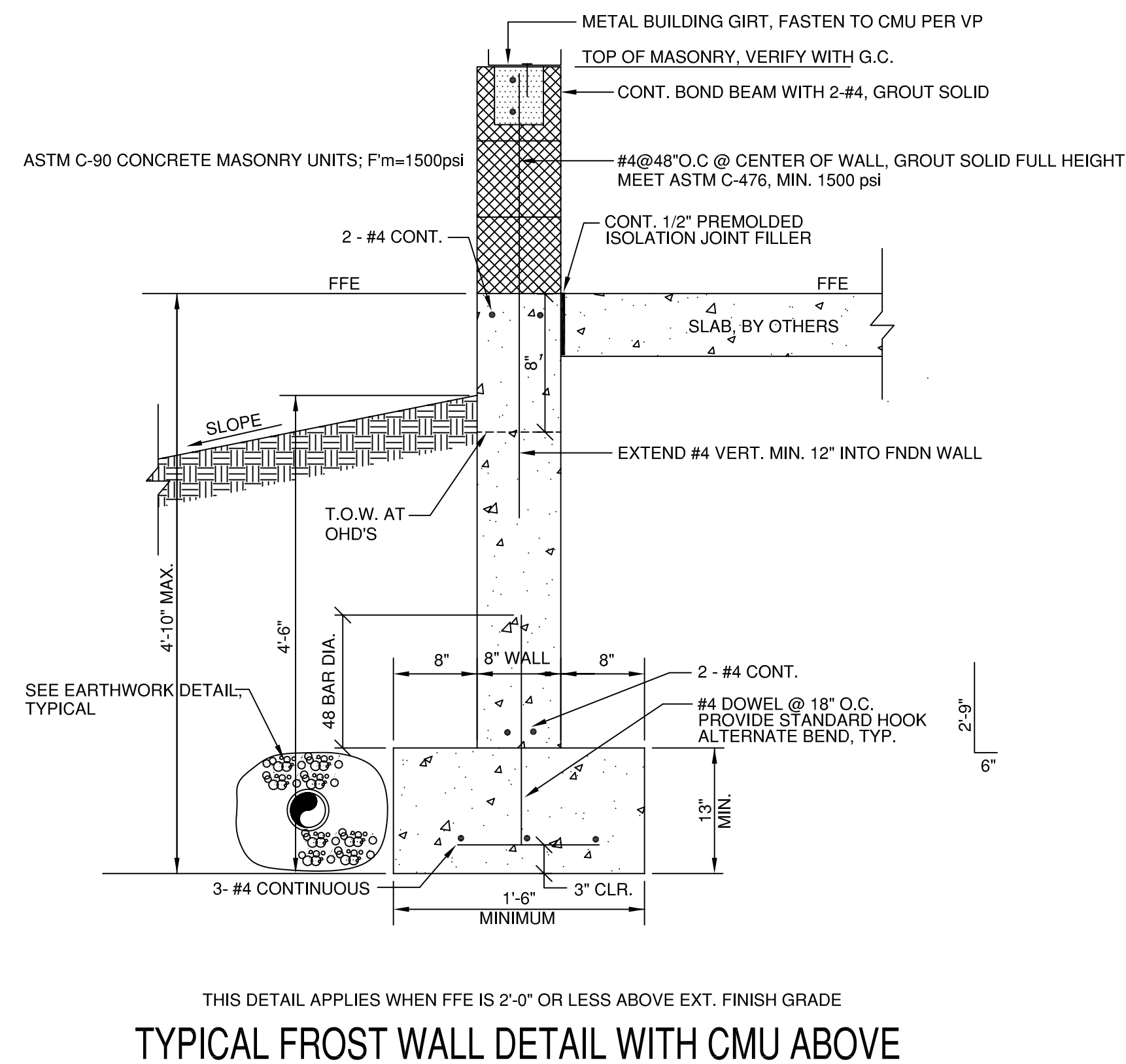
REV.	BY:	DATE:	STATUS:

DESIGN	CHKD	DRAWN
SRG	SRG	SRG
EOR	SRG	SRG
PROJECT NO.	05-124	

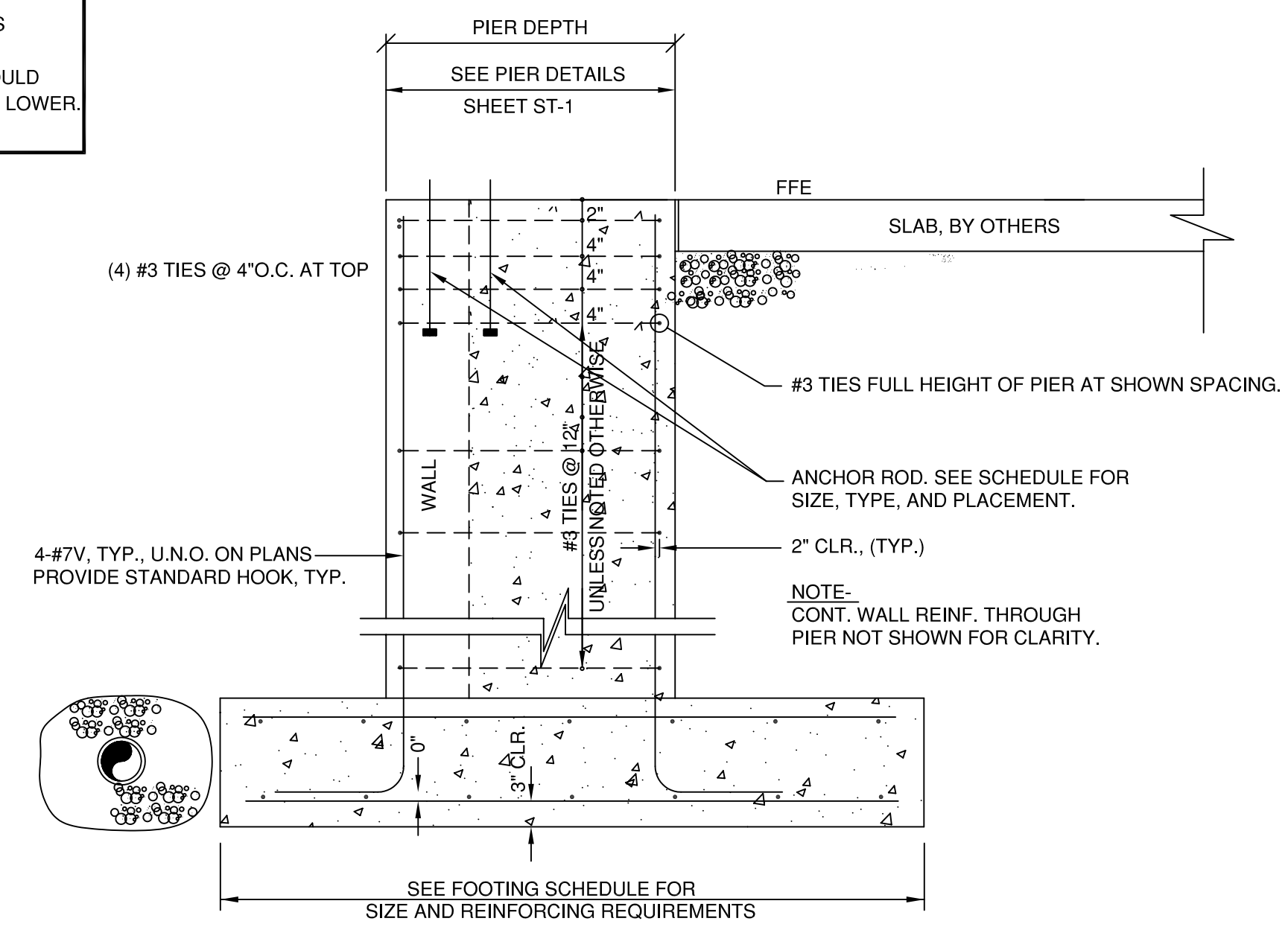
FOUNDATION DETAILS AND SECTIONS OF
BIO PROCESSING, INC.
 PORTLAND, MAINE
 FOR **PATCO CONSTRUCTION CO., INC.**
 SANFORD, MAINE

DATE	SCALE
10-26-05	NTS

SHEET S2 OF 2



CONTRACTOR NOTE:
 ALL COLUMN PIERS ARE DESIGNED FOR HORIZONTAL THRUST BY COLUMN. AS A RESULT, ELEVATION BOTTOM OF FOOTING LOWER THAN INDICATED IS NOT ACCEPTABLE. CONTACT SRG ENGINEERING SO ALL FOUNDATIONS CAN BE REDESIGNED SHOULD ELEVATION BOTTOM OF FOOTING(S) NEED TO BE LOWER.



SECTION 2
 N.T.S. S1

SECTION 3
 N.T.S. S1