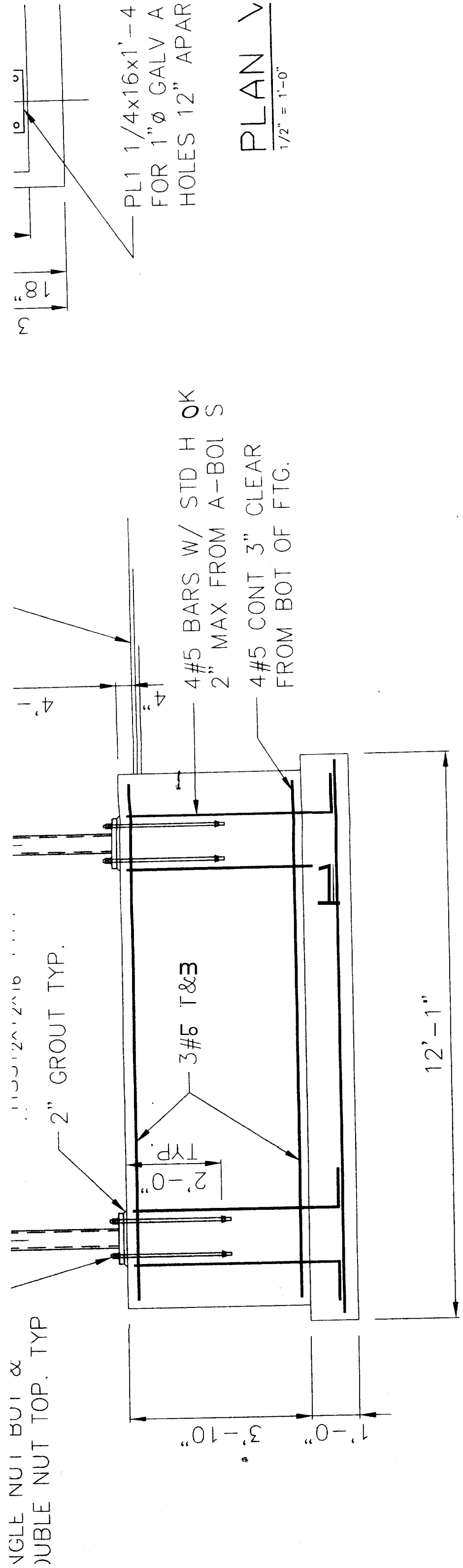


PLAN VIEW  
 1/2" = 1'-0"



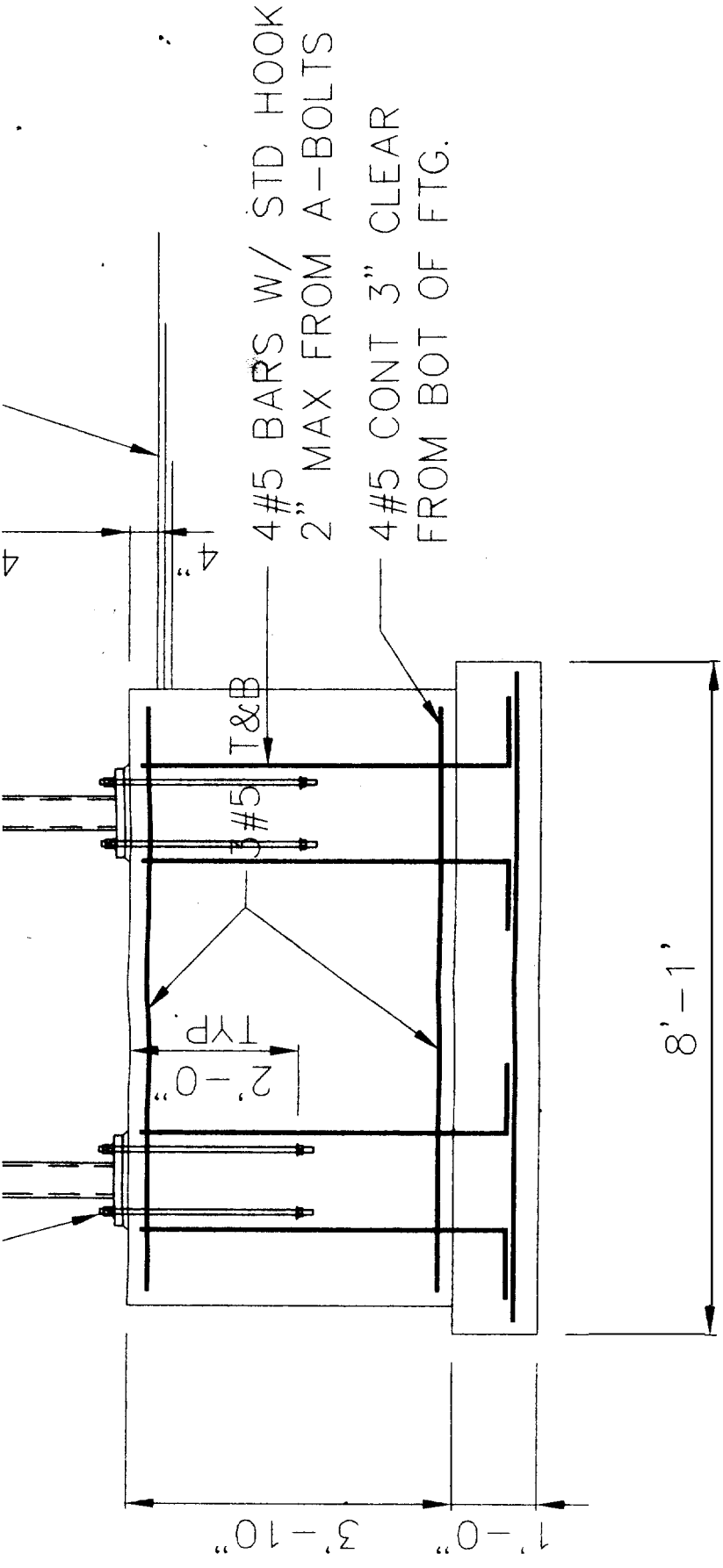
TYP. SIGN "A" ELEVATION

1/2" = 1'-0"  
 NOTES: 1. ALL CONNECTIONS SHALL BE WELDED USING 3/16" FILLET WELD  
 EITHER CONTINUOUS OR ALL AROUND UNO.



## 1039 RIVERSIDE STREET PORTLAND, MAINE THE HIGHLAND

designed by: MFL
drawn by: MFL
checked by: JHL
scale: NOTED
date: JUNE 12, 2003
plot date: JUNE 12, 2003
project #: 23024



### TYP. SIGN "B" ELEVATION

$\frac{1}{2}" = 1'-0"$

- NOTES: 1. ALL CONNECTIONS SHALL BE WELDED USING  
3/16" FILLET WELD EITHER CONTINUOUS  
OR ALL AROUND UNO.