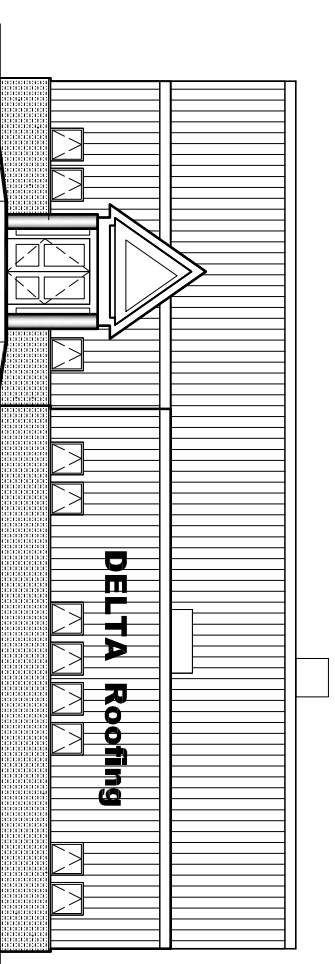




DELTA ROOFING of MAINE, LLC

1039 Riverside Street
Portland, Maine 04103

PDT Project No. 05-136



ARCHITECTURE
INTERIOR DESIGN
PLANNING

P D T
A R C H I T E C T S

49 DAVENOUTH STREET
PORTLAND, ME 04101
207 775-1089
207 775-2694 FAX

ARCHITECT:

CONSULTANTS:

CIVIL

DeLuca-Hoffman Associates, Inc.
South Portland, Maine

STRUCTURAL

Allied Engineering, Inc.
Westbrook Common
Westbrook, ME
207.854.8126

SPECIFICATIONS

Lowell Specifications, Inc.
50 Fernald Road
Freeport, Maine 04032-6611
207.865.4518

**CODE COMPLIANCE
OVERVIEW**

NEW CONSTRUCTION, FULLY INTERIRED, AUTOMATIC SPRINKLER SYSTEM, TYPICAL ONE STORY OFFICE SPACE. ONE STORY VERTICAL METAL SHOP SYSTEMS ARE TO BE USED AT THE EXTENSION OF BUILDING.

- 1. CODE COMPLIANCE
NEW CONSTRUCTION, FULLY INTERIRED, AUTOMATIC SPRINKLER SYSTEM, TYPICAL ONE STORY OFFICE SPACE. ONE STORY VERTICAL METAL SHOP SYSTEMS ARE TO BE USED AT THE EXTENSION OF BUILDING.
- 2. CONSTRUCTION TYPE
NEW TYPE III UNPROTECTED NON-COMBUSTIBLE
- 3. OCCUPANCY
NEW FACTORY INDUSTRIAL
- 4. ALLOWABLE HEIGHT AND BUILDING AREAS (MG)
 - TYPICAL AREA PER FLOOR "F" BUSINESS
 - TYPICAL AREA PER FLOOR "F-1" FACTORY INDUST.
 - TYPICAL AREA PER FLOOR "S-1" STORAGE
 - BUILDING HEIGHT "F" BUSINESS
 - BUILDING HEIGHT "F-1" FACTORY INDUSTRIAL
 - BUILDING HEIGHT "S-1" STORAGE

- 5. OCCUPANT LOAD FACTOR USED:
 - BUSINESS "F" - 100 GROSS SF PERSON (80°FY "F" AND "F-1")
 - STORAGE (FACTORY) "F-1" - 300 GROSS SF PERSON
 - STORAGE (GENERAL) "S-1" - 300 GROSS SF PERSON
- 6. CALCULATED OCCUPANT LOADS
 - 27 PEOPLE PER FLOOR MAX. "F"
 - 82 PEOPLE PER FLOOR MAX. "F-1"
 - 21 PEOPLE PER FLOOR MAX. "S-1"
- 7. REFERRED SEPARATIONS:
 - SEPARATION OF THIS
 - BUSINESS "F" FACTORY INDUSTRIAL "F-1" STORAGE "S-1"
 - 24 HOUR SEPARATION OF HAZAR (GROUP 3) FOR SPRINKLER SYSTEM
 - MECHANICAL USE AREAS
 - METALLICAL ROOMS
 - MECH
- 8. FIRE PROTECTION SYSTEMS:
 - PERMANENT FIRE EXTINGUISHER DISTRIBUTION PER NFPA
 - AUTOMATIC SPRINKLER SYSTEM PER NFPA
- 9. MEANS OF EGRESS PARAMETERS:
 - THRU EXITS PER FLOOR ROAD - 44 FEET
 - MAX. DISTANCE FROM EXIT TO EXIT - 150 FT
 - MAX. DISTANCE FROM EXIT TO EXIT - 100 FT
 - MAX. COMBINATION OF TRAVEL - 100 FT
 - CORRIDOR WIDTH (2 IN PERSON MINIMUM)

ABBREVIATIONS

AB	AIR BARRIER	MAX	MAXIMUM
AFF	ABOVE FINISH FLOOR	MFGR	MANUFACTURER
AHU	AIR HANDLING UNIT	MGFR	MANAGER
ALUM	ALUMINUM	MIN	MINIMUM
BF	BARRIER FREE	MISC	MISCELLANEOUS
BLDG	BUILDING	MO	MASONRY OPENING
CFMF	COLD FORMED METAL FRAMING	MTL	METAL
CI	CONTROL JOINT	NIC	NOT IN CONTRACT
CLG	CEILING	NTS	NOT TO SCALE
CL	CENTER LINE	OC	ON CENTER
CMT	CERAMIC MOSAIC TILE	OD	OUTSIDE DIAMETER
CMU	CONCRETE MASONRY UNIT	OPP	OPPOSITE
COL	COLUMN (COLUMN LINE)	OFS	OVERTHROW SCUPPER
CONC	CONCRETE	P	PAINT (type)
CONST	CONSTRUCTION	PT	POREGLAZED TILE
COORD	COORDINATE	PL	PLATE
CORR	CORRIDOR	PLYWD	PLYWOOD
CPT	CARPET	P.T.	PRESSURE TREATED
CWT	CERAMIC WALL TILE	R	RAISER
DIA	DIAMETER	RAD	RADIUS
DIM	DIMENSION	RCP	REFLECTED CEILING PLAN
DWGS	DRAWINGS	RD	ROOF DRAIN
EA	EACH	REQD	REQUIRED
EL, ELEV	FLOOR ELEVATION	RL	RAIN LEADER
EF	EXHAUST FAN	RM	ROOM
EJ	EXPANSION JOINT	RO	ROUGH OPENING
EM	ELEVATOR MACHINE	SAT	SUSPENDED ACOUSTICAL TILE
ES	EACH SIDE	SIM	SIMILAR
FE	FIRE EXTINGUISHER	SPEC	SPECIFICATION
FEC	FIRE EXTINGUISHER CABINET	STD	STANDARD
FO	FACE OF (STUD, BLOCK ETC)	STOR	STORAGE
FRT	FIRE RESISTANT TREATED	STRUCT	STRUCTURAL
FT	FEET	STR	STAIR TREAD
FLOOR	FLUORESCENT	TYP	TYPICAL
GA	Gauge	UNO	UNLESS NOTED OTHERWISE
GALV	GALVANIZED	VB	VINYL BASE
GB	GRAAB BAR	VCT	VINYL COMPOSITE TILE
GC	GENERAL CONTRACTOR	VERT	VERTICAL
GWB	GYPSDUM WALL BOARD	VTF	VERTIFY IN FIELD
H, HGT	HEIGHT	VTR	VENT THROUGH ROOF
HB	HOSE BIB	W/	WITH
HM	HOLLOW METAL	W/O	WITHOUT
HOR	HORIZONTAL	WD	WOOD
KD	KILN DRIED		
LAV	LAVATORY		

LIST OF DRAWINGS

TITLE SHEET	
A0.1	WALL SYSTEMS/LEGEND/SYMBOLS
A1.1	FIRST FLOOR PLAN
A1.2	NOT USED
A2.1	FIRST FLOOR LIGHTING AND SWITCHING PLAN
A2.2	NOT USED
A2.3	FIRST FLOOR POWER PLAN
A2.4	NOT USED
A3.1	ROOF PLAN
A4.1	EXTERIOR ELEVATIONS
A4.2	DOOR TYPES, WINDOW TYPES, SCHEDULES
A4.3	DOOR AND WINDOW DETAILS
A5.1	BUILDING SECTIONS
A5.2	NOT USED
A5.3	WALL SECTIONS
A5.4	ENLARGED PLANS, DETAILS
A5.5	NOT USED
A5.6	NOT USED
A6.1	EXTERIOR DETAILS
A7.1	FLOOR PATTERNS, FIN. SCHEDULE, INT. ELEVATIONS
S-000	NOTES, SCHEDULES AND BRACE SCHEMATICS
S-001	NOTES AND MISC. DETAILS
S-002	TYPICAL MISC. DETAILS
SB-100	FOUNDATION PLAN
SB-500	FOUNDATION DETAILS
SF-100	SECOND FLOOR AND LOW ROOF FRAMING PLAN
SF-101	HIGH ROOF FRAMING PLAN
SF-500	STRUCTURAL DETAILS

CONSTRUCTION SET

August 9, 2006