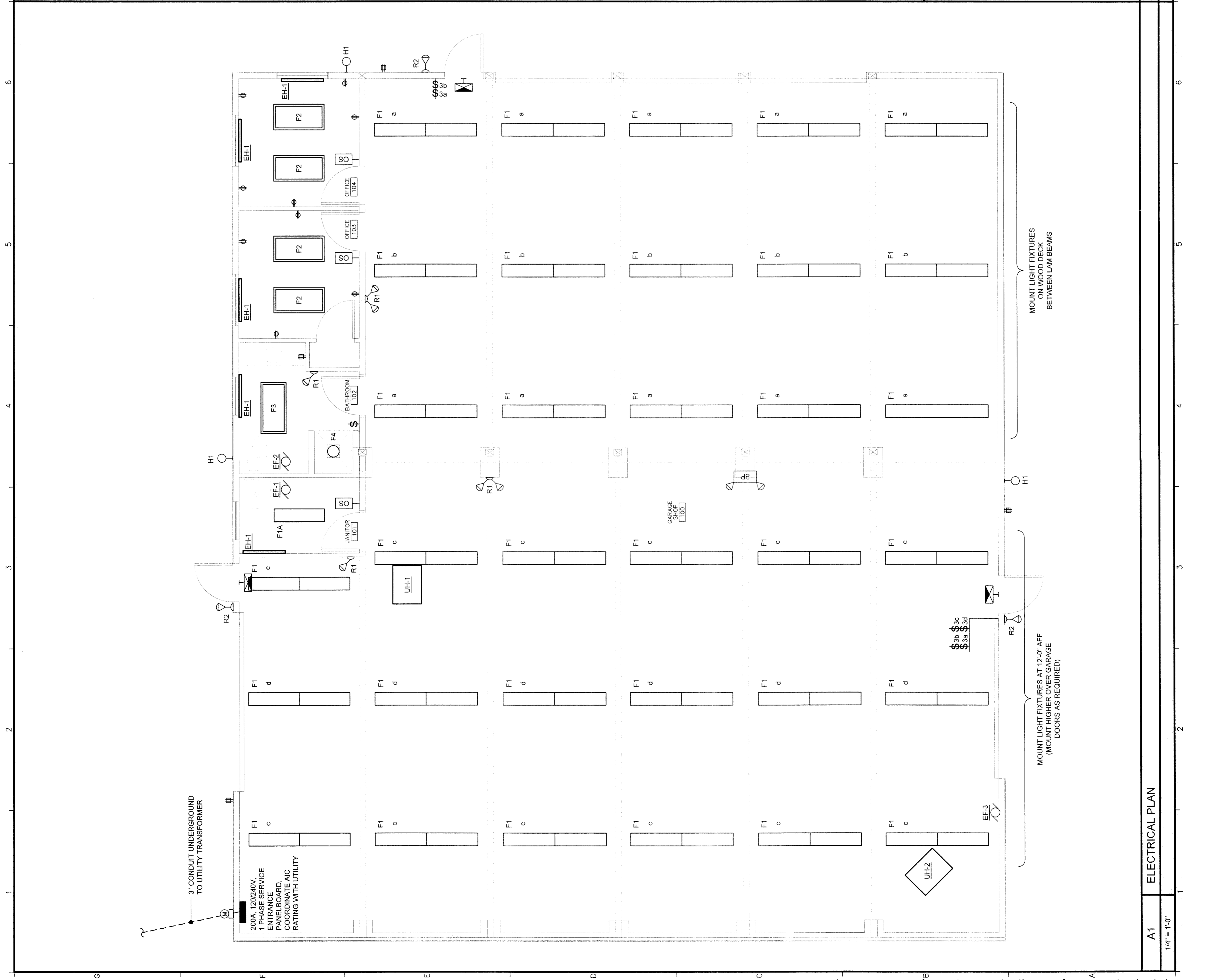


A1
1/4" = 1'-0"

ELECTRICAL PLAN



A7
GENERAL NOTES

1. ALL WORK SHALL BE BY AN ELECTRICIAN LICENSED IN THE STATE OF MAINE AND CONFORM WITH ALL CODES AND REGULATIONS.
2. ALL CONVENIENCE RECEPTACLES IN WORK AREA SHALL BE GFCI PROTECTED.
3. THE LOCATION OF EQUIPMENT AS GIVEN ON THE DRAWINGS, IS APPROXIMATE.
4. ALL ELECTRICAL DEVICES, WHEN INSTALLED, SHALL BE PROTECTED FROM DAMAGE DURING CONSTRUCTION. COVER PLATES SHALL BE INSTALLED AFTER FINISH MATERIALS HAVE BEEN APPLIED.
5. COORDINATE ALL WORK WITH OTHER DIVISIONS.
6. DO NOT MOUNT RECEPTACLES OVER ELECTRIC BASEBOARD HEAT.

A9
LEGEND

NO SCALE

LIGHT FIXTURE, RECESSED TROFFER, TYPICAL
 RECESSED DOWNLIGHT
 WALL MOUNTED LIGHT FIXTURE
 INDUSTRIAL TYPE LIGHT FIXTURE, TYPICAL
 EMER BATTERY UNIT WITH INTEGRAL HEADS, MT 7-6'AFF
 SINGLE REMOTE EMERGENCY LIGHT HEAD, MOUNT 7-6'AFF
 DOUBLE REMOTE EMERGENCY LIGHT HEAD, MOUNT 7-6'AFF
 EXIT SIGN, WALL MOUNTED, SHADING INDICATES FACE(S) MOUNT AT 7-6'AFF OR OVER DOOR
 LIGHT SWITCH, 20A, 125V, LETTER INDICATES SWITCHING, MOUNT WITH CENTERLINE 48" AFF
 THREE-WAY LIGHT SWITCH
 FOUR-WAY LIGHT SWITCH
 MULTI-GANGED SWITCHES - GANG UNDER ONE PLATE - LETTER INDICATES SWITCHING
 OCCUPANCY SENSOR SWITCH, WALL MOUNTED
 PANELBOARD, SURFACE MOUNTED
 DUPLEX RECEPTACLE
 GFCI DUPLEX RECEPTACLE
 METER AND ENCLOSURE

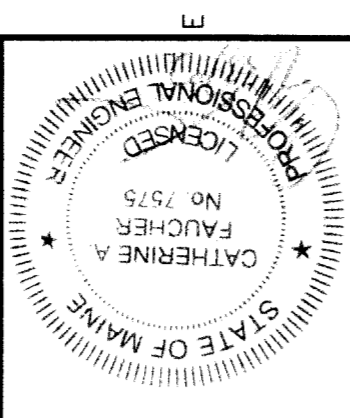
E-100

ELECTRICAL PLAN
 HARDY POND BUILDING NO. 10
 1039 RIVERSIDE STREET
 PORTLAND, MAINE

ISSUED FOR CONSTRUCTION ~ 23 JULY 2007

DATE	BY	DESCRIPTION

Date: 07/23/2007
 Drawn By: PED
 Checked By: WFF
 Project Mgr: WFF
 Project No: 05090
 Cad File: 05090.DWG
 Scale: 0
 Graphic: 0



Allied Engineering
 Electrical Mechanical Electrical Commissioning
 160 Veranda Street
 Portland, Maine 04103
 T: 207.221.2168
 F: 207.221.2166
 Web: www.allied-eng.com

LUMINAIRE SCHEDULE

TYPE	DESCRIPTION	MFR	CATALOG SERIES NUMBER SEE NOTE 1	MOUNTING	VOLTS	QTY/FIXTURE	LAMP WATTS	KEY NOTES
F1	8' TANDEM STRIP WITH INDUSTRIAL SHADE	METALUX	8TA SERIES	CEILING SURFACE OR CHAIN MOUNT	120	4	32 3500K	T8 2.5
F1A	4' STRIP WITH INDUSTRIAL SHADE	METALUX	IA SERIES	CEILING SURFACE	120	2	32 3500K	T8 2.5
F2	2x4 PARABOLIC TROFFER, SEMI-SPECULAR SILVER, 18 CELL LOUVER	LITHONIA	2EP9GX SERIES	RECESSED CEILING	120	3	32 3500K	T8 2
F3	2x4 GRID TROFFER	LITHONIA	2GCR832 SERIES - A19/166 LENS	RECESSED CEILING	120	3	32 3500K	T8 2
F4	8" DIA. ENCLOSED WET LOCATION DOWNLIGHT	LITHONIA	LF8-2/2TRT78LTY-GEB10-WLP	RECESSED CEILING	120	1	42	PLT
H1								
BP	EMERGENCY BATTERY PACK WITH INTEGRAL HEADS	SURE LITES	RLM4	WALL 7'-6"				INC 9
R1	EMERGENCY REMOTE HEAD	SURE LITES	12TRWHU	WALL 7'-6"				INC 8 4
R2	WEATHERPROOF REMOTE HEAD	SURE LITES	12TRWH	WALL 7'-6"				INC 8
EXIT	EXIT SIGN	SURE LITES	LPX70-RWH	SEE PLANS	120 VAC 12V DC			RED LED 3

NOTES

1. NOTE THAT THESE NUMBERS ARE NOT COMPLETE CATALOG #S. PROVIDE ALL REQUIREMENTS ON SCHEDULE, NOTES, SPECS, AND DRAWINGS COMBINED.
2. PROVIDE "SURE LITE" LAMPS AND MATCHING BALLASTS, BASIS OF DESIGN BASED ON PENNSYLVANIA PROSTART PXS PROGRAMMED RAPID START BALLAST (71 BALLAST FACTORY) AND MATCHING OCTRON XPS LAMPS
3. PROVIDE WALL CEILING, OR PENDANT MOUNTING AS INDICATED ON PLANS. PROVIDE NUMBER OF FACES AND ARROWS AS INDICATED.
4. PROVIDE SINGLE OR DOUBLE REMOTE HEADS AS INDICATED ON PLANS
5. PROVIDE 2 LAMPS IN CROSS SECTION