



DELTA ROOFING of MAINE, LLC
 1039 Riverside Street
 Portland, Maine 04103

PDT Project No. 05-136



ARCHITECT:



ARCHITECTURE
 INTERIOR DESIGN
 PLANNING

49 DARRINGTON STREET
 PORTLAND, ME 04101
 207 775-1039
 207 775-2694 FAX

CONSULTANTS:

CIVIL
 DeLuca-Hoffman Associates, Inc.
 South Portland, Maine

STRUCTURAL
 Allied Engineering, Inc.
 Westbrook Common
 Westbrook, ME
 207.854.8126

SPECIFICATIONS
 Lowell Specifications, Inc.
 50 Fernald Road
 Freeport, Maine 04032-6611
 207.865.4518

**CODE COMPLIANCE
 OVERVIEW**

NEW CONSTRUCTION TILT UP SUPERVED ATTACHED SPRINKLER SYSTEM THROUGHOUT TWO STORY OFFICE SPACE (ON SECOND FLOOR) METAL SHOP (FIRST FLOOR) AND EXTENSION (FIRST FLOOR) EXTENSION (FIRST FLOOR)

DESIGN PARAMETERS:

1. CODE COMPLIANCE PER CODE 200 ED, NFPA 99 WINDOW AND DOOR CODE 200 ED
2. CONSTRUCTION TYPE: BR 2001 EDITION, NFPA 99 WINDOW AND DOOR CODE 200 ED
3. CONSTRUCTION TYPE: BR 2001 EDITION, NFPA 99 WINDOW AND DOOR CODE 200 ED
4. ALLOWABLE HEIGHT AND BUILDING AREAS (BA) BUSINESS "F" AND FACTORY INDUSTRIAL "F-1"
5. OCCUPANT LOAD FACTOR USED: 100 (GROSS SF PERSON) BOTH "F" AND "F-1"
6. CALCULATED OCCUPANT LOAD: 22 PEOPLE PER FLOOR BA "F" 42 PEOPLE PER FLOOR BA "F-1"
7. REQUIRED SEPARATIONS: BR 2001 EDITION, NFPA 99 WINDOW AND DOOR CODE 200 ED
8. FIRE PROTECTION SYSTEMS: PORTLAND TYPE RATING (RISKER DISTRIBUTION PER NFPA 1072) WITH SPRINKLER SYSTEM PER NFPA 13
9. MEANS OF EGRESS PARAMETERS: MAIN DEAD END CORRIDORS - 30 FEET MAX TRAVEL DISTANCE TO EXIT - 200 FT MAX TRAVEL DISTANCE TO EXIT - 200 FT CORRIDOR WIDTH (2 IN PERSON MINIMUM) 44 STAR WIDTH (OCCUPANT LOAD LESS THAN 100) MINIMUM 36"

ABBREVIATIONS

AB	AIR BARRIER	MO	MASONRY OPENING	A0.1	WALL SYSTEMS/LEGEND/SYMBOLS
AFF	ABOVE FINISH FLOOR	MISC	MISCELLANEOUS	A1.1	FIRST FLOOR PLAN
AHU	AIR HANDLING UNIT	MTL	METAL	A1.2	SECOND FLOOR PLAN
ALUM	ALUMINUM	NIC	NOT IN CONTRACT	A2.1	FIRST FLOOR LIGHTING AND SWITCHING PLAN
BF	BARRIER FREE	NIS	NOT TO SCALE	A2.2	SECOND FLOOR LIGHTING AND SWITCHING PLAN
BLDG	BUILDING	OC	ON CENTER	A2.3	FIRST FLOOR POWER PLAN
CFMF	COLD FORMED METAL FRAMING	OD	OUTSIDE DIAMETER	A2.4	SECOND FLOOR POWER PLAN
CJ	CONTROL JOINT	OPP	OPPOSITE	A3.1	ROOF PLAN
CL	CENTRAL LINE	OTS	OVERFLOW SCUPPER	A3.1	ROOF PLAN
CMT	CERAMIC MOSAIC TILE	P	OVERFLOW SCUPPER	A3.1	ROOF PLAN
CNU	CONCRETE MASONRY UNIT	PT	PAINT (type)	A4.1	EXTERIOR ELEVATIONS
COL	COLUMN (COLUMN LINE)	PL	PORCELAIN TILE	A4.1	EXTERIOR ELEVATIONS
CONC	CONCRETE	PLYWD	PLYWOOD	A4.2	DOOR TYPES, WINDOW TYPES, SCHEDULES
CONST	CONSTRUCTION	P.T.	PRESSURE TREATED	A4.3	DOOR AND WINDOW DETAILS
COORD	COORDINATE	R	RADIUS	A4.3	DOOR AND WINDOW DETAILS
CORR	CORRIDOR	RAD	REFLECTED CEILING PLAN	A5.2	BUILDING SECTIONS
CPT	CARPET	RCP	REQUIRED CEILING PLAN	A5.3	BUILDING SECTIONS
CWT	CERAMIC WALL TILE	RD	ROOF DRAIN	A5.4	GABLE SECTIONS, ENTRY PLAN, DETAILS
DIA	DIAMETER	REQ'D	REQUIRED	A5.5	ENLARGED PLANS, INTERIOR ELEVATIONS
DIM	DIMENSION	RL	RAIN LEADER	A5.6	STAR DETAILS
DWGS	DRAWINGS	RM	ROUGH OPENING	A6.1	EXTERIOR DETAILS
EL, ELEV	FLOOR ELEVATION	RO	ROUGH OPENING	A7.1	FLOOR PATTERNS, FINISH SCHEDULE
EF	EXHAUST FAN	SAT	SUSPENDED ACOUSTICAL TILE		
EJ	EXPANSION JOINT	SIM	SIMILAR		
EM	ELEVATOR MACHINE	SPEC	SPECIFICATION		
FE	FIRE EXTINGUISHER	STD	STANDARD		
PEC	FIRE EXTINGUISHER CABINET	STOR	STORAGE		
FO	FACE OF (STUD, BLOCK ETC)	STRUCT	STRUCTURAL		
FRT	FIRE-RESISTANT TREATED	TR	STAIR TREAD		
FT	FLEET	TR	STAIR TREAD		
FLUOR	FLUORESCENT	TR	STAIR TREAD		
GA	GATGE	UNO	UNLESS NOTED OTHERWISE		
GALV	GALVANIZED	VB	VINYL BASE		
GB	GRAB BAR	VCT	VINYL COMPOSITE TILE		
GC	GENERAL CONTRACTOR	VEKT	VERTICAL		
GWB	GYPSUM WALL BOARD	VIF	VERIFY IN FIELD		
H, HGT	HEIGHT	VTR	VENT THROUGH ROOF		
HM	HOLLOW METAL	W//	WITH		
HOR	HORIZONTAL	W/O	WITHOUT		
KD	KILN DRIED	WD	WOOD		
LAV	LAVATORY				
MFG	MANUFACTURER				
MAX	MAXIMUM				
MIN	MINIMUM				

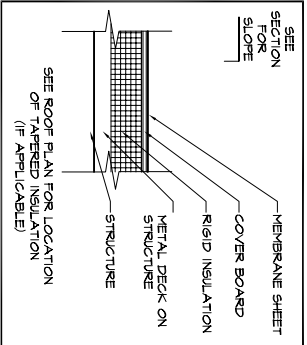
LIST OF DRAWINGS

	TITLE SHEET	
Sheet 4	Deluca-Hoffman Associates, Inc. - SITE LAYOUT PLAN	
Sheet 5	Deluca-Hoffman Associates, Inc. - GRADING, DRAINAGE AND EROSION CONTROL PLAN	
Sheet 6	Deluca-Hoffman Associates, Inc. - UTILITY PLAN	
A0.1	WALL SYSTEMS/LEGEND/SYMBOLS	
A1.1	FIRST FLOOR PLAN	
A1.2	SECOND FLOOR PLAN	
A2.1	FIRST FLOOR LIGHTING AND SWITCHING PLAN	
A2.2	SECOND FLOOR LIGHTING AND SWITCHING PLAN	
A2.3	FIRST FLOOR POWER PLAN	
A2.4	SECOND FLOOR POWER PLAN	
A3.1	ROOF PLAN	
A3.1	ROOF PLAN	
A4.1	EXTERIOR ELEVATIONS	
A4.2	DOOR TYPES, WINDOW TYPES, SCHEDULES	
A4.3	DOOR AND WINDOW DETAILS	
A4.3	DOOR AND WINDOW DETAILS	
A5.1	BUILDING SECTIONS	
A5.2	BUILDING SECTIONS	
A5.3	BUILDING SECTIONS	
A5.4	GABLE SECTIONS, ENTRY PLAN, DETAILS	
A5.5	ENLARGED PLANS, INTERIOR ELEVATIONS	
A5.6	STAR DETAILS	
A6.1	EXTERIOR DETAILS	
A7.1	FLOOR PATTERNS, FINISH SCHEDULE	
S-000	NOTES, SCHEDULES AND BRACE SCHEMATICS	
S-001	NOTES AND MISC. DETAILS	
S-002	TYPICAL MISC. DETAILS	
SB-100	FOUNDATION PLAN	
SB-500	FOUNDATION DETAILS	
SF-100	SECOND FLOOR AND LOW ROOF FRAMING PLAN	
SF-101	HIGH ROOF FRAMING PLAN	
SF-500	STRUCTURAL DETAILS	

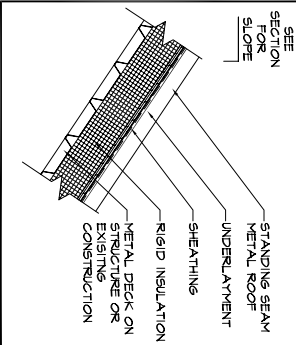
PERMIT SET

June 23, 2006

ROOF SYSTEMS

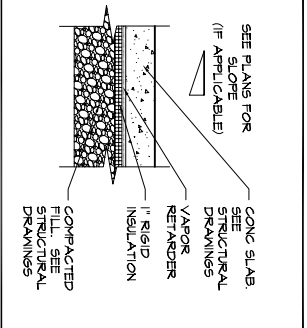


SINGLE-PLY MEMBRANE ROOFING
R1

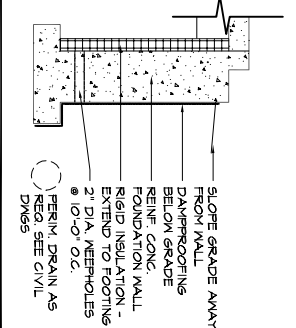


STANDING SEAM METAL ROOF
R4

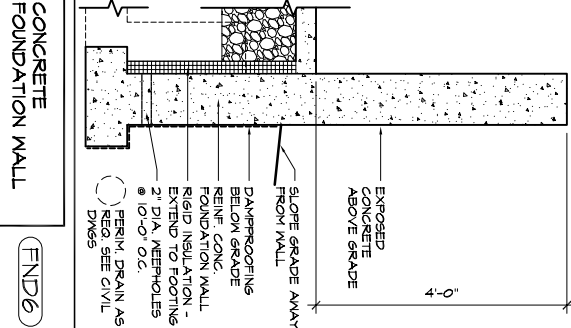
FOUNDATION & FLOOR SYSTEMS



CONCRETE SLAB ON GRADE - INSULATED
F2

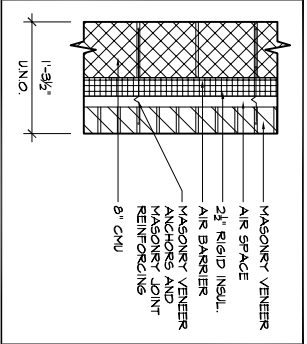


TYP. CONCRETE FOUNDATION WALL
FND1

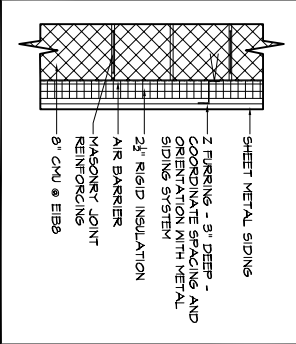


CONCRETE FOUNDATION WALL
FND6

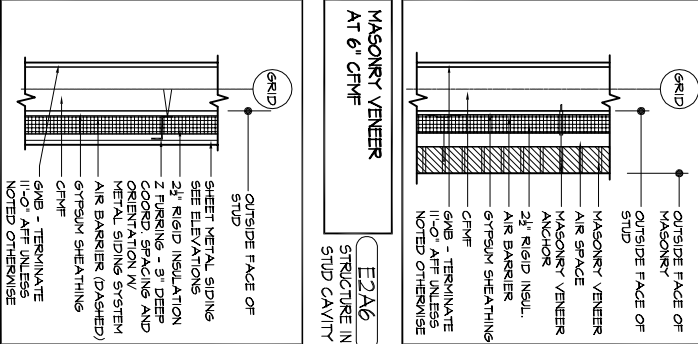
EXTERIOR WALL SYSTEMS



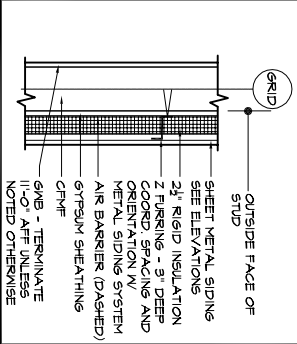
MASONRY VENEER AT 8" CMU
E1A8



SHEET METAL SIDING AT 8" CMU
E1B8

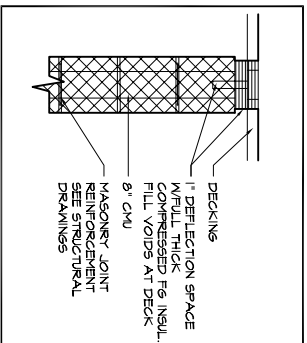


MASONRY VENEER AT 6" CMU
E2A6

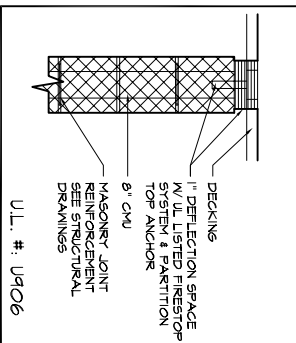


SHEET METAL SIDING AT 6" CMU
E2B6

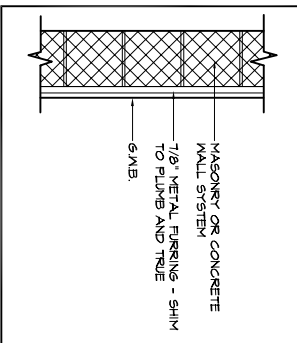
INTERIOR WALL SYSTEMS



8" CMU-FILL HEIGHT
IA8



8" CMU-FILL HEIGHT 1-HOUR FIRE-RATED
IA8-1

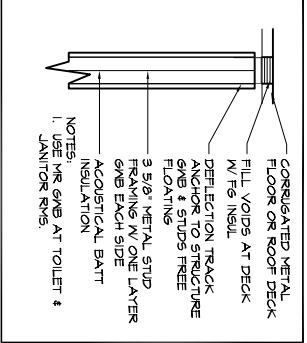


8" METAL FLURRING AT MASONRY WALL
2F1

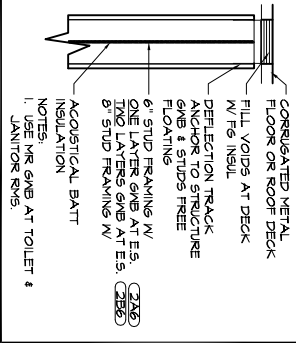


METAL STUD FILL HEIGHT 1-HOUR FIRE-RATED
2A6-1

INTERIOR WALL SYSTEMS



3 5/8" METAL STUD FILL HEIGHT
2A3



METAL STUD PARTITION FILL HEIGHT
2A6

GENERAL NOTES

1. PROVIDE 1" MIN. CLEAR WHERE STRUCTURAL, MECHANICAL, OR ELECTRICAL ITEMS PENETRATE THROUGH WALLS WITH FG BATT INSULATION AT UNRATED RATED WALLS.
2. USE PREFORMED COMPRESSED WHERE EXPOSED.
3. INTERIOR CMU PARTITIONS NOT NEOPRENE FILLED AT TOP OF WALL.
4. INTERIOR METAL STUD PARTITIONS NOT NEOPRENE FILLED AT TOP OF WALL.
5. SEE PLANS AND INTERIOR ELEVATIONS FOR LOCATIONS AND APPLICABLE SMOKE- OR FIRE-RATING (IF APPLICABLE) OF GROUND-FACE-CMU (GFB).

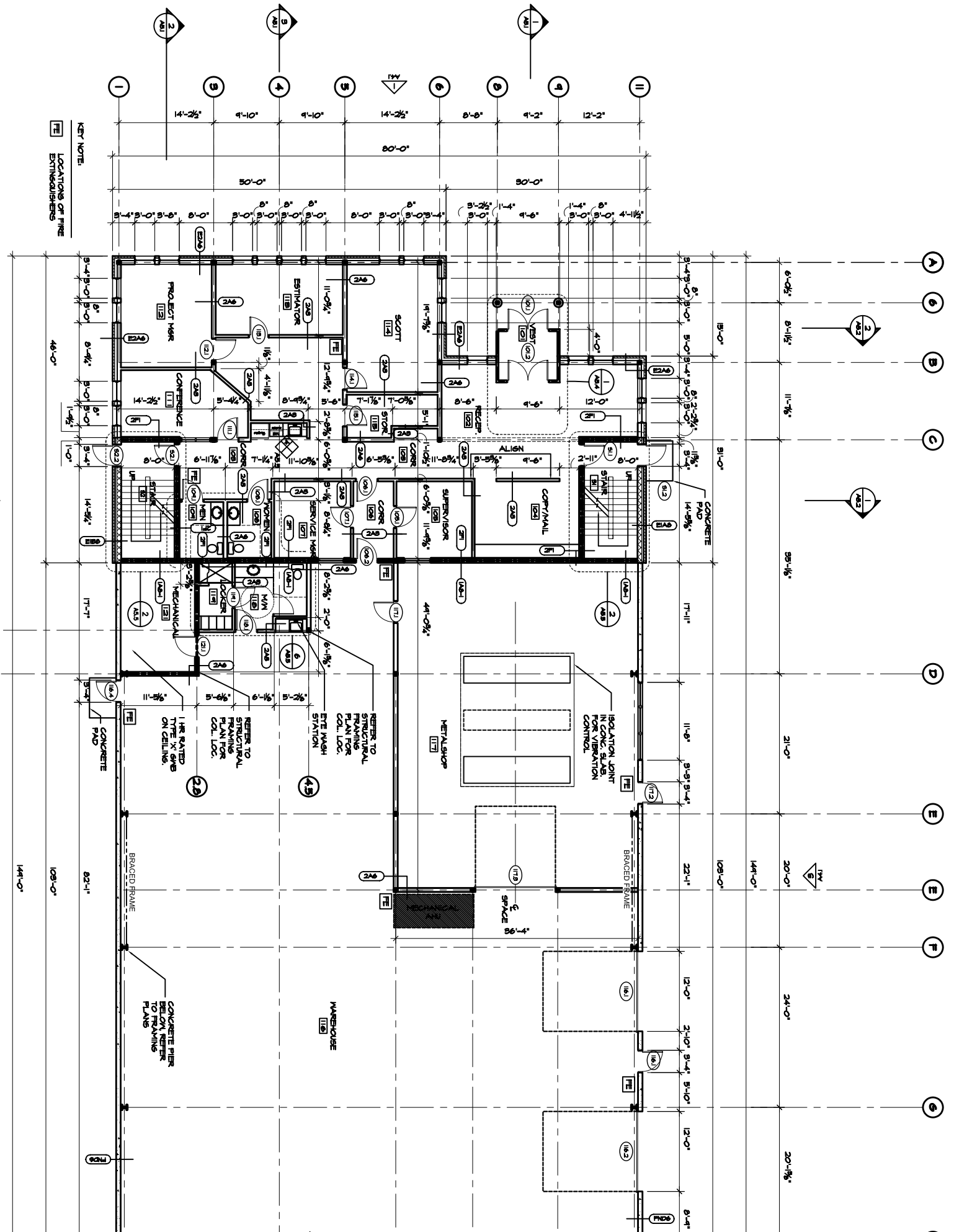
LEGEND

- MATERIALS**
- GRAVEL
 - CONCRETE MASONRY UNIT
 - BRICK
 - CONCRETE
 - SOIL
 - METAL STUD PARTITION
 - STEEL
 - WOOD FRAMING
 - WOOD BLOCKING
 - PLYWOOD
 - GYPSUM BOARD
 - SUSPENDED ACOUSTIC CEILING
 - BATT INSULATION
 - RIGID INSULATION
 - EXPANSION MATERIAL
 - FINISH WOOD
 - STONE
 - EXISTING CONSTRUCTION TO REMAIN
 - EXISTING WALL TO REMAIN
 - EXISTING WALL TO BE REMOVED

SYMBOLS

- FLUVENT FIXTURE
- BARRIER FREE FIXTURE
- ROOM NUMBER
- DOOR NUMBER
- WINDOW TYPE
- BORROWED LIGHT TYPE
- FLOOR LEVEL CHANGE AT WALL
- BUILDING SECTION
- WALL SECTION
- DETAIL, ON DRAWINGS OR IN DETAIL BOOK/VOLUME 5
- WALL OR ROOF TYPE
- INTERIOR ELEVATION
- EXTERIOR ELEVATION
- TOILET REFERENCE
- VERTICAL ELEVATION
- COLUMN CENTERLINE

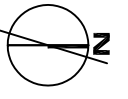
- 2 HOUR RATED FIRE SEPARATION
- 1 HOUR RATED FIRE SEPARATION
- SMOKE PARTITION



1 FIRST FLOOR PLAN
1/8"=1'-0"

- PLAN GENERAL NOTES:**
1. THE DRAWINGS USE A SYSTEM OF KEPT NOTES ON PLANS, ELEVATIONS AND DETAILS. INSTRUCTIONS FOR SPECIFIC COMPONENTS OF THE WORK ARE KEPT TO THE DRAWINGS, BUILDING SYSTEMS (PARTITIONS, ROOF & FOUNDATION) ARE KEPT TO FLOOR PLANS, WALL SECTIONS, ROOF PLAN AND OTHER DETAILS AS APPROPRIATE.
 2. WORK FROM GIVEN DIMENSIONS. IN GENERAL, LARGE-SCALE DETAILS TAKE PRECEDENCE OVER SMALLER SCALE PLANS, ELEVATIONS AND BUILDING SECTIONS. NOTIFY THE ARCHITECT OF ANY DIMENSIONAL DISCREPANCIES PRIOR TO COMMENCING THE WORK, AND DO NOT BEGIN WORK UNTIL SUCH DISCREPANCIES ARE RESOLVED. CLEARANCES SHALL BE MAINTAINED IN CASES OF DISCREPANCY.
 3. DIMENSIONAL CONTROL:
INTERIOR DIMENSIONS ARE FROM:
CENTRILINE OF STUD TO CENTRILINE OF STUD;
FACE OF MASONRY TO FACE OF MASONRY;
CENTRILINE OF STUD TO FACE OF MASONRY;
CENTRILINE LINE OF COL. TO CENTRILINE OF STUD OR FACE OF MASONRY.
 4. OWNER TO SUPPLY SITE DRAWINGS AND IS RESPONSIBLE FOR ALL WORK UP TO 10 FEET OF THE BUILDING. VERIFY ALL SITE CONDITIONS AND DIMENSIONS ON THE SITE DRAWINGS AND REPORT ANY DISCREPANCIES TO THE ARCHITECT. PROCEED WITH THE WORK ONLY AFTER DISCREPANCY HAS BEEN RESOLVED WITH THE ARCHITECT.
 5. MASONRY OPENINGS OR ROUGH OPENING DIMENSIONS INDICATED ARE NOMINAL DIMENSIONS ONLY. COORDINATE ALL MASONRY OPENINGS OR ROUGH OPENINGS WITH ACTUAL WINDOW UNIT, DOOR FRAME, OR CURTAIN WALL/STOREFRONT SIZES AND REQUIREMENTS.

6. FLOORING AND FLOOR FINISHES SHALL BE INSTALLED TO A MAXIMUM DIFFERENTIAL OF 1/8" BETWEEN DISSIMILAR MATERIALS. PROVIDE TRANSITION STRIPS OR THRESHOLDS (1/2" MAXIMUM) OF SAME MATERIAL AS FLOORING AND/OR AS NOTED ON THE DRAWINGS. TYPICAL DETAILS.
 7. THE FOLLOWING DETAILS ARE TYPICAL THROUGHOUT THIS PROJECT AND APPLY IN ALL CASES UNLESS SPECIFICALLY NOTED OTHERWISE. PLEASE NOTE THAT THESE DETAILS MAY NOT BE DISCREPANTY REFERENCED FROM THE PLANS OR OTHER DETAILS.
- ALL COLLARS ADJACENT TO OR INTERNAL WITH EXTERIOR WALL CONSTRUCTION SHALL BE FULLY FINISHED AND INTERSECTING PARTITIONS SHALL BE FINISHED WITH A "J" BEAD AND SEALANT.
- ALL TOP-OF-WALL CONDITIONS THROUGH FLOORS SHALL BE ENCLOSED IN A CHASE.
- FRANKING PLANS: SEE DETAIL SHEET 04 FOR TRANSITIONS AND OVERLAYS BETWEEN AIR BARRIER INSTALLATION DIVISIONS.
- FLASHING: FLASHING AND WALL MEMBRANE FLASHINGS, AND STANDARD AIR BARRIER INSTALLATION DIVISIONS.
- MAINTAIN A CLEAR DIMENSION OF 1/8" FROM ALL ADJACENT CONSTRUCTION TO THE LATCH (ALL) SIDE OF THE DOOR.
- MAINTAIN OTHER CLEAR DIMENSIONS IN ACCORDANCE WITH THE LATEST VERSION OF THE ADA ACCESSIBILITY GUIDELINES (ADAA).



ARCHITECTURE
INTERIOR DESIGN
PLANNING

PDT ARCHITECTS

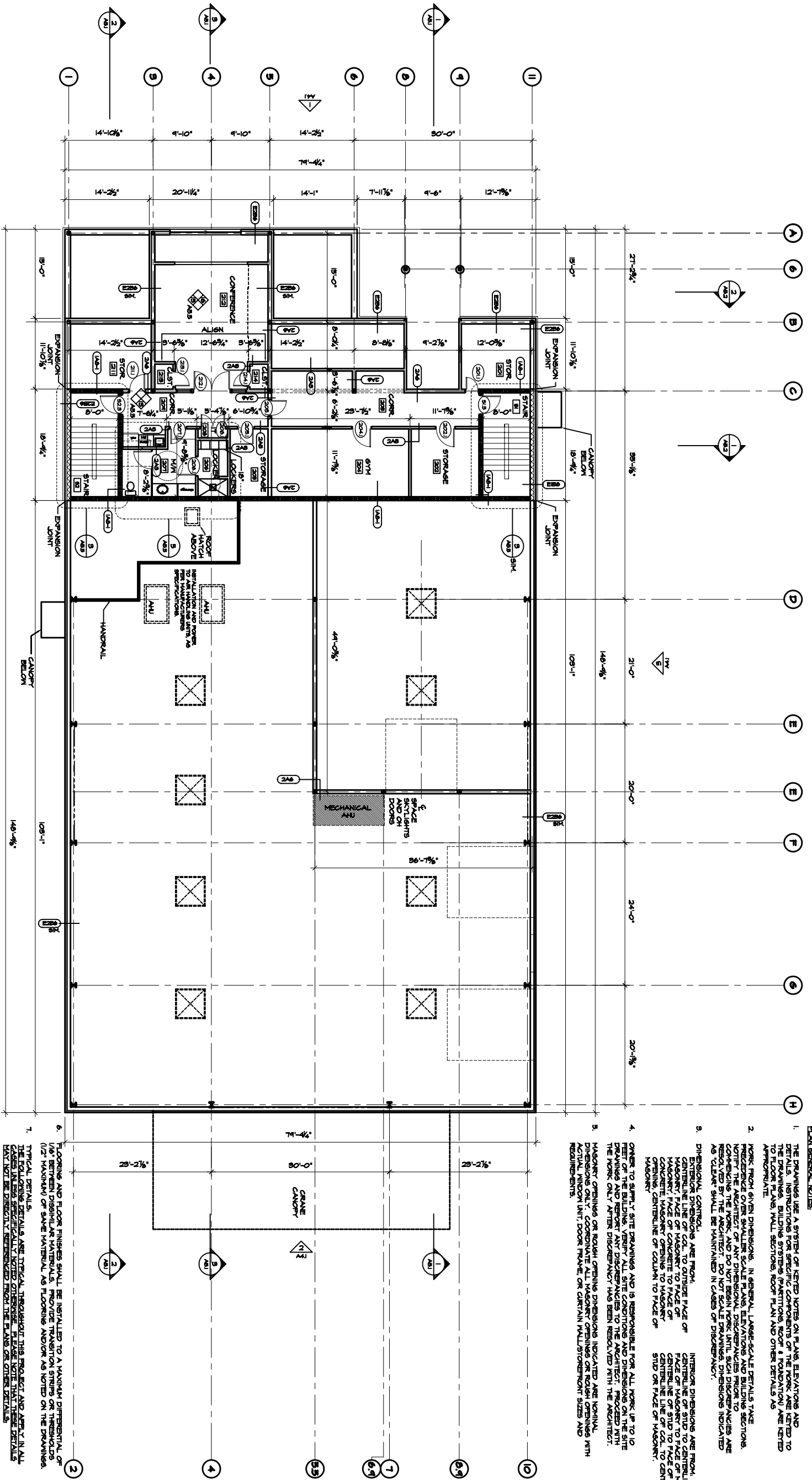
40 DARTMOUTH STREET
PORTLAND, ME 04101
207-775-1052
207-775-2694 FAX

COPYRIGHT 2006
PDT Architects
All rights reserved. No part of this document may be reproduced without the permission of PDT Architects.

DELTA ROOFING
PORTLAND, MAINE

JOB NO. 06-136	DRAWN: CHIK MJD	SCALE: 1/8"=1'-0"	TITLE: FIRST FLOOR PLAN
ISSUE: PERMIT SET JUNE 23, 2006	SHEET		A1.1

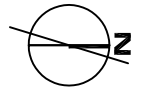
1 SECOND FLOOR PLAN



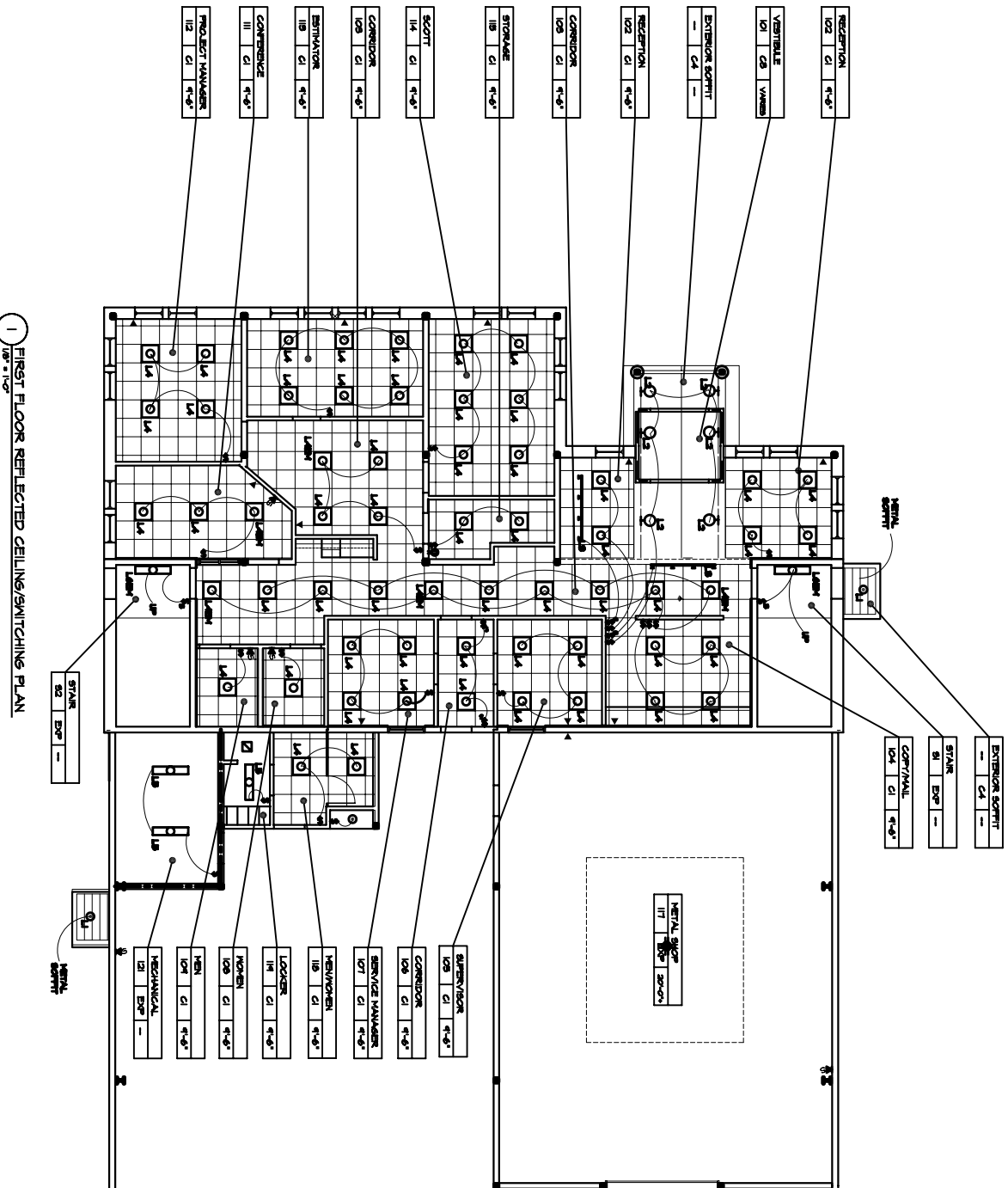
PLAN GENERAL NOTES

1. THE DRAWINGS USE A SYSTEM OF KEPT NOTES ON PLANS, ELEVATIONS AND SECTIONS. ALL DIMENSIONS ARE TO FACE UNLESS NOTED OTHERWISE. DIMENSIONS TO FACE OF MASONRY, CONCRETE, METAL, AND OTHER MATERIALS ARE TO FACE UNLESS NOTED OTHERWISE. DIMENSIONS TO CENTERLINE OF COLUMN TO FACE OF MASONRY, CONCRETE, METAL, AND OTHER MATERIALS ARE TO CENTERLINE OF COLUMN TO FACE OF MASONRY, CONCRETE, METAL, AND OTHER MATERIALS UNLESS NOTED OTHERWISE.
2. WORK FROM GIVEN DIMENSIONS. IN GENERAL, LARGE SCALE DETAILS STATE THE DIMENSIONS TO FACE OF MASONRY, CONCRETE, METAL, AND OTHER MATERIALS. SMALL SCALE DETAILS STATE THE DIMENSIONS TO CENTERLINE OF COLUMN TO FACE OF MASONRY, CONCRETE, METAL, AND OTHER MATERIALS UNLESS NOTED OTHERWISE.
3. INTERIOR DIMENSIONS ARE FROM CENTERLINE OF COLUMN TO CENTERLINE OF COLUMN UNLESS NOTED OTHERWISE. DIMENSIONS TO FACE OF MASONRY, CONCRETE, METAL, AND OTHER MATERIALS ARE TO FACE UNLESS NOTED OTHERWISE.
4. OWNER TO VERIFY SITE DIMENSIONS AND IS RESPONSIBLE FOR ALL WORK UP TO 10 FEET OF THE BUILDING. VERIFY ALL SITE DIMENSIONS AND DIMENSIONS ON THE SITE DRAWINGS AND REPORT ANY DISCREPANCIES TO THE ARCHITECT. PROCEED WITH THE WORK ONLY AFTER DISCREPANCY HAS BEEN RESOLVED WITH THE ARCHITECT.
5. MASONRY OPENINGS OR ROUGH OPENING DIMENSIONS INDICATED ARE NOMINAL DIMENSIONS ONLY. COORDINATE ALL MASONRY OPENINGS OR ROUGH OPENINGS WITH ACTUAL WINDOW UNIT, DOOR FRAME, OR CURTAIN WALL/STOREFRONT SIZES AND REQUIREMENTS.

6. FLOORING AND FLOOR FINISHES SHALL BE INSTALLED TO A MAXIMUM DIFFERENTIAL OF 1/8" BETWEEN DISSIMILAR MATERIALS. PROVIDE TRANSITION STRIPS OR THRESHOLDS (1/2" MAXIMUM) OF SAME MATERIAL AS FLOORING AND/OR AS NOTED ON THE DRAWINGS.
 7. TYPICAL DETAILS ARE TYPICAL THROUGHOUT THIS PROJECT AND APPLY IN ALL CASES UNLESS SPECIFICALLY NOTED OTHERWISE. PLEASE NOTE THAT THESE DETAILS MAY NOT BE DIRECTLY REFERENCED FROM THE PLANS OR OTHER DETAILS.
- ALL COLUINS ADJACENT TO OR INTERNAL WITH EXTERIOR WALL CONSTRUCTION SHALL BE ENCLOSED WITHIN THE WALL CONSTRUCTION UNLESS NOTED OTHERWISE.
- ALL GRS PARTITIONS INTERSECTING MASONRY PARTITIONS, SHALL BE FINISHED WITH A "J" ALL JOINT PRESERVATIONS THROUGH FLOORS SHALL BE ENCLOSED IN A CHASE.
- ALL TOP-OF-WALL CONDITIONS SHALL BE SEALED TO DECK ABOVE TO MAINTAIN THE REQUIRED SMOKE OR FIRE-RATING. COORDINATE TOP OF WALL CONSTRUCTION WITH FRAMING PLANS. SEE DETAIL SHEET A-1 FOR TRANSITIONS AND OVERLAPS BETWEEN AIR BARRIER INSTALLATION DIAGRAMS.
- UNLESS NOTED OTHERWISE, THE LOCATION OF DOOR FRAMES SHALL BE:
- 1. FROM ADJACENT WALL TO THE HINGE SIDE OF DOOR.
 - 2. FROM ADJACENT WALL TO THE HINGE SIDE OF DOOR.
 - 3. FROM ADJACENT WALL TO THE HINGE SIDE OF DOOR.
- MAINTAIN A GLEAZE DIMENSION OF 1-8" FROM ALL ADJACENT CONSTRUCTION TO THE MAINLINE OF DOOR. DIMENSIONS IN ACCORDANCE WITH THE LATEST VERSION OF THE ADA ACCESSIBILITY GUIDELINES (ADAMS).



<p>DELTA ROOFING PORTLAND, MAINE</p>	<p>PDT ARCHITECTS</p> <p>40 DARTMOUTH STREET PORTLAND, ME 04101 207.775.1052 207.775.2694 FAX</p>	<p>ARCHITECTURE INTERIOR DESIGN PLANNING</p>	<p>Kind of use or publication of the contents of this document is not permitted by PDT Architects. COPYRIGHT 2006 PDT Architects</p>	<p>JOB NO. 06-136</p> <p>DRAWN: CHK MJD</p> <p>SCALE: AS NOTED</p> <p>ISSUE PERMIT SET JUNE 23, 2006</p> <p>TITLE SECOND FLOOR PLAN</p> <p>SHEET A1.2</p>
---	--	--	--	---



1 FIRST FLOOR REFLECTED CEILING/SWITCHING PLAN

CEILING TYPES:

- C1 24x48 SUPERVED ACUSTICAL TILE
- C2 MOISTURE RESISTANT ACT 24x48
- C3 5'x7' GIBB
- C4 5'x7' GIBB
- C5 5'x7' GIBB
- C6 5'x7' GIBB
- C7 5'x7' GIBB
- C8 5'x7' GIBB
- C9 5'x7' GIBB
- C10 5'x7' GIBB
- C11 5'x7' GIBB
- C12 5'x7' GIBB
- C13 5'x7' GIBB
- C14 5'x7' GIBB
- C15 5'x7' GIBB
- C16 5'x7' GIBB
- C17 5'x7' GIBB
- C18 5'x7' GIBB
- C19 5'x7' GIBB
- C20 5'x7' GIBB
- C21 5'x7' GIBB
- C22 5'x7' GIBB
- C23 5'x7' GIBB
- C24 5'x7' GIBB
- C25 5'x7' GIBB
- C26 5'x7' GIBB
- C27 5'x7' GIBB
- C28 5'x7' GIBB
- C29 5'x7' GIBB
- C30 5'x7' GIBB
- C31 5'x7' GIBB
- C32 5'x7' GIBB
- C33 5'x7' GIBB
- C34 5'x7' GIBB
- C35 5'x7' GIBB
- C36 5'x7' GIBB
- C37 5'x7' GIBB
- C38 5'x7' GIBB
- C39 5'x7' GIBB
- C40 5'x7' GIBB
- C41 5'x7' GIBB
- C42 5'x7' GIBB
- C43 5'x7' GIBB
- C44 5'x7' GIBB
- C45 5'x7' GIBB
- C46 5'x7' GIBB
- C47 5'x7' GIBB
- C48 5'x7' GIBB
- C49 5'x7' GIBB
- C50 5'x7' GIBB

CEILING NOTES:

1. SEE DETAILS FOR TYPICAL CEILING MATERIAL TRANSITION DETAILS.
2. ALL SINGLE USER TOILET ROOMS TO BE COORDINATE WITH MECH. RETURN AND DIFFUSER WITH MECHANICAL DESIGN/CONTRACTOR.
3. COORDINATE ELEC. LAYOUT WITH MECHANICAL DESIGN/CONTRACTOR.
4. FOR GIBB CEILING SPRINKLER HEADS TO BE CONCEALED RECESSED HEADS. COLOR MATCHED TO FIELD.
5. FOR GIBB CEILING SPRINKLER HEADS. COLOR MATCHED TO FIELD.

RCP ROOM TAGS

ROOM NAME: KITCHEN
 ALSO: C1 4'-0"
 CEILING TYPE: GIBB
 CEILING HEIGHT: 9'-0"

LIGHT FIXTURE SCHEDULE (FIXTURES BY LIGHTCOLOR, UNLESS NOTED OTHERWISE)

Symbol	Light Fixture Schedule	Notes
L1	INCANDESCENT DOWNLIGHT	REFLECTOR, 20/80SCNM FRAME, 3002PM LAMPING, PAR 20, 50W
L2	WALL WASHER	CATALPOS NO. 8230WVWV2 VISOR, 8230VSWH LAMPING, 10W CMH
L3	LOW VOLTAGE TRACK LIGHTING	TRACK, 6009RA END FEED, 6048BK TRANSFORMER, 80/02BK LITELACK, 8083BK LAMPING, 1400 B175H 50W
L4	2x2 CEILING FLOURESCENT	CATALPOS NO. 2P3024LS24UMVH LAMPING, 2 8U 75
L4EM	2x2 CEILING FLOURESCENT/EMERGENCY	CATALPOS NO. 2P3024LS24UMVHEM LAMPING, 2 8U 75 FACTORY-INSTALLED EMERGENCY POWER BATTERY PACK W/ CHARGER AND INVERTER BICO OR EQUAL.
L5	1x4 CEILING FLOURESCENT	CATALPOS NO. 34A42B2 LAMPING, 2 - 75
L5EM	1x4 WALL MOUNT FLOURESCENT	CATALPOS NO. 1NB232AMVHEM LAMPING, 2 8U 75 FACTORY-INSTALLED EMERGENCY POWER BATTERY PACK W/ CHARGER AND INVERTER BICO OR EQUAL.
L7	2x4 CEILING FLOURESCENT	CATALPOS NO. 71442B11 LAMPING, 4 - 54w T5 HIGH OUTPUT
L7EM	2x4 CEILING FLOURESCENT/EMERGENCY	CATALPOS NO. 71442B11EM LAMPING, 4 - 54w T5 HIGH OUTPUT FACTORY-INSTALLED EMERGENCY POWER BATTERY PACK W/ CHARGER AND INVERTER BICO OR EQUAL.
L9	HALO T5 SERIES DOWNLIGHTS	CATALPOS NO. 780-0207N147EMHST GTT-15, PROVIDED BY OWNER RECALLED BY CONTRACTOR
L9	EXTERIOR WALL PACKS	CATALPOS NO. 80MM142BK-1 LAMPING, 175W - VERTICAL HALIDE (CVM)
L10	PENDANT FLOURESCENT LIGHTING	CATALPOS NO. 15C2322220VAL POWER FEED/CABLE, 15C2220VAL LAMPING, 6 - 75
L11	EXIT SIGNAGE	CATALPOS NO. 11UNRM
L12	EMERGENCY LIGHTING UNIT	CATALPOS NO. 811217M SEALED LEAD CALCIUM BATTERY

GRAPHIC LEGEND:

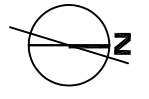
- ⊗ EMERGENCY EXIT SIGNAL
- ⊕ ADJONVISUAL FIRE ALARM (80' AFFJ)
- ⊖ VISUAL SMOKE FIRE ALARM (80' AFFJ)
- ⊙ EMERGENCY PACK
- ⊠ 24x24 FLOURESCENT
- ⊡ 24x48 FLOURESCENT
- ⊢ 12x48 FLOURESCENT
- ⊣ 24x6 FLOURESCENT
- RECESSED CAN
- ⊙ VERTICAL HALIDE DOWNLIGHT
- ⊖ WALL WASHER
- ⊖ TRACK LIGHTING
- ⊖ EXTERIOR WALL PACK
- ⊖ MECHANICAL SUPPLY/RETURN
- ⊖ ACCESS PANEL
- ⊖ OVERHEAD DOOR OPERATOR (INVERTER CONTROL - PROVIDE 4 PIR DOOR)
- ⊖ SINGLE POLE SWITCH
- ⊖ 3-WAY SWITCH
- ⊖ DIMMER SWITCH
- ⊖ DUPLEX OUTLET
- ⊖ GFI OUTLET (BEYOND PANEL)
- ⊖ 220 OUTLET
- ⊖ CATV (Cable TV)
- ⊖ TELEPHONE/DATA
- ⊖ SPECIAL CONNECTION
- ⊖ SWITCH/OUTLET
- ⊖ FLOOR OUTLET
- ⊖ FULL-DOWN DUPLEX OUTLET

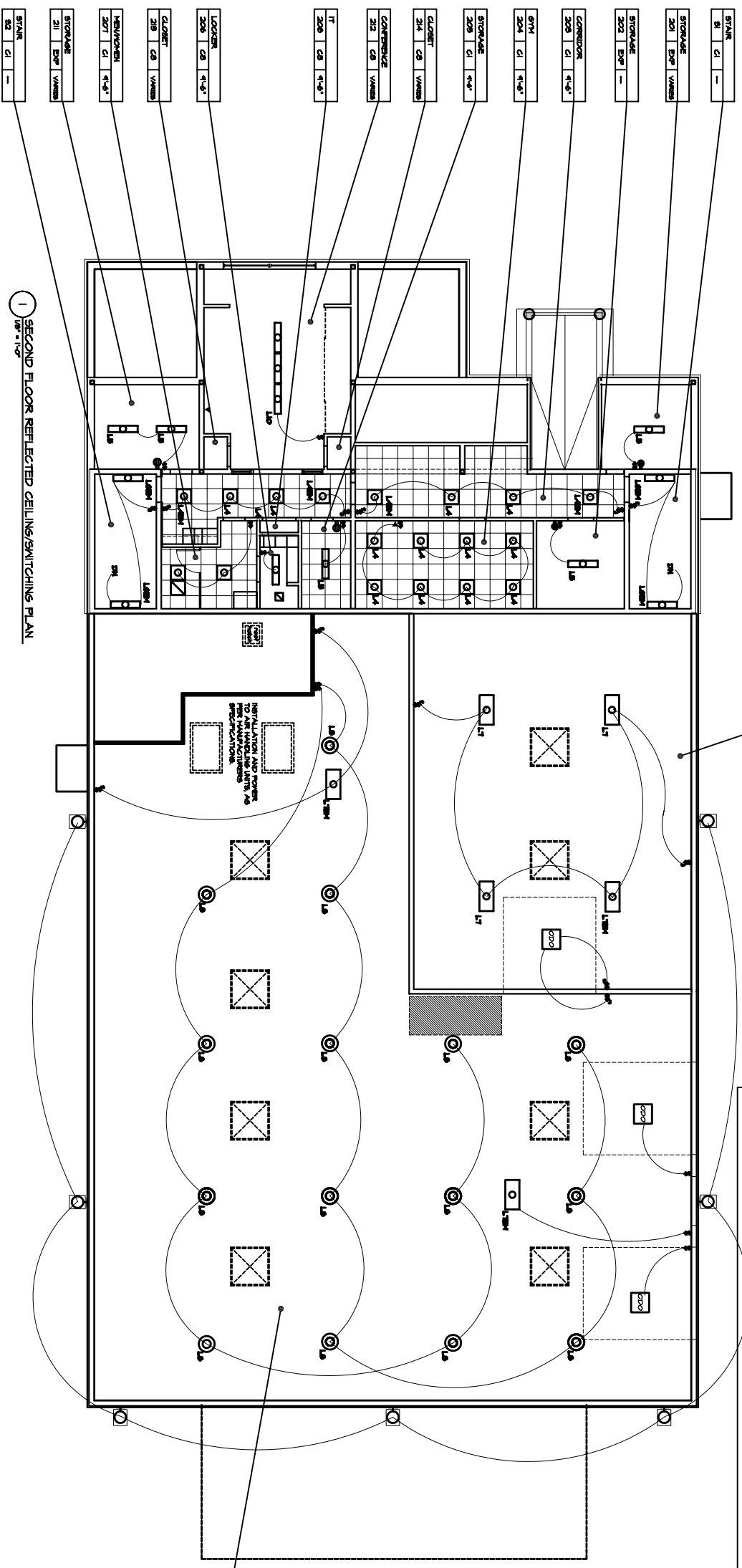
SECURITY NOTES:

NOTE: ALL ITEMS MAY BE INDICATED ON LIGHTING PLAN IN CASES WHERE OUTLETS SHARE THE SAME AREA PLACING ON THE LIGHTING PLAN. LOCATIONS ARE INDICATED ON THE LIGHTING PLAN.

NOTE: THESE ZONE CANDO-SEE SECURITY SYSTEMS ARE NOT TO BE USED FOR THE HANDICAPPED SPECIFICATION.

ZONES (NECESSARY SECURITY CODE FOR EACH ZONE): OFFICE AREA ENTRY DOORS ONLY (CATV) VAND AREA (NECESSARY CODE) (NO POINTS OF ACCESS SEE SITE PLAN)

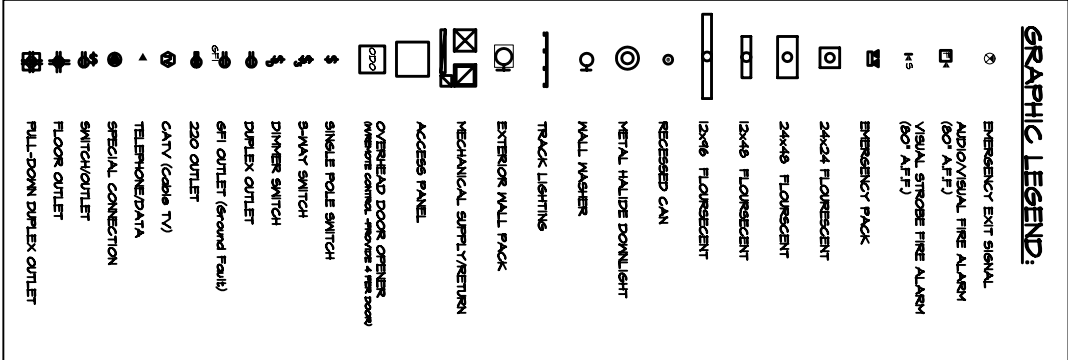




1 SECOND FLOOR REFLECTED CEILING SWITCHING PLAN

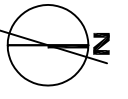
- CEILING TYPES:**
- C1 2x4x8 SPRINGED ACoustICAL TILE
 - C2 MOISTURE RESISTANT ACT 2x4x8
 - C3 5x7 1/2" 6" ACoustICAL TILE
 - C4 EXP. EXPOSED TO STRUCTURE ABOVE
- CEILING NOTES:**
1. SEE DETAILS FOR TYPICAL CEILING MATERIAL TRANSMISSION DETAILS.
 2. TYPE C1 & 5x7 1/2" ACoustICAL TILE TO BE INSTALLED IN ALL OFFICE AND CONFERENCE ROOMS.
 3. CONFINEMENT NEAR, RETURN AND DRAINAGE TO BE INSTALLED IN ALL OFFICE AND CONFERENCE ROOMS.
 4. ELECTRICAL DESIGN/CONTRACTOR TO BE CONSIDERED RECESSED HEADS COLOR MATCHED TO FIELD.
- RCP ROOM TAGS**
- | | | |
|-----------|---------|----------|
| ROOM NAME | LOCATED | ROOM NO. |
| RESTROOM | 201 | 201 |
| STORAGE | 202 | 202 |
| STORAGE | 203 | 203 |
| STORAGE | 204 | 204 |

- LIGHT FIXTURE SCHEDULE** (FIXTURES BY LIGHTING, UNLESS NOTED OTHERWISE)
- | | | |
|-----|-----------------------------------|---|
| L1 | INCANDESCENT DOWNLIGHT | REFLECTOR, 20130DM FRAME, 2002PI LAMPING, PAR 20, 50W |
| L2 | WALL WASHER | CATALOG NO. 8202ENK172 VISUAL STROBE FIRE ALARM LAMPING, TON CHH |
| L3 | LOW VOLTAGE TRACK LIGHTING | TRACK, 800BRA END FEED, 800BRA BATTERY PACK, 170VAC, 100W LAMPING, 1816-B17H, 50W |
| L4 | 2x2 CEILING FLOURESCENT | CATALOG NO. 2732AL50ANWHI LAMPING, 2 - 8U T8 FACTORY-INSTALLED EMERGENCY POWER BATTERY PACK IV, CHARGER AND INVERTER, BIO OR EQUAL. |
| L5 | 1x4 CEILING FLOURESCENT | CATALOG NO. 244A232 LAMPING, 2 - T8 |
| L5M | 1x4 WALL MOUNT FLOURESCENT | CATALOG NO. 171623ANWHI LAMPING, 2 - T8 FACTORY-INSTALLED EMERGENCY POWER BATTERY PACK IV, CHARGER AND INVERTER, BIO OR EQUAL. |
| L7 | 2x4 CEILING FLOURESCENT | CATALOG NO. 244A232 LAMPING, 2 - T8 |
| L7M | 2x4 CEILING FLOURESCENT/EMERGENCY | CATALOG NO. 171623ANWHI LAMPING, 2 - T8 FACTORY-INSTALLED EMERGENCY POWER BATTERY PACK IV, CHARGER AND INVERTER, BIO OR EQUAL. |
| L8 | HALO T5 SERIES DOWNLIGHTS | CATALOG NO. 780-120/277V-175W-HST GRT-15, PROVIDED BY OWNER, INSTALLED BY CONTRACTOR |
| L9 | EXTERIOR WALL PACKS | CATALOG NO. 6XW175VALK-I LAMPING, 175W - METAL HALIDE (GMV) POWER FEED/CABLE, 1500000AL LAMPING, 6 - T5 |
| L10 | PENDANT FLOURESCENT LIGHTING | CATALOG NO. 1121LNM LAMPING, 1121LNM SEaled LEAD CALCIUM BATTERY |
| L11 | EXIT SIGNAGE | |
| L12 | EMERGENCY LIGHTING UNIT | |



NOTE: OUTLETS HAVE BE INDICATED ON LIGHTING PLAN IN CASES WHERE OUTLETS SHARE THE SAME LOCATION AS INDICATED ON THE POWER PLAN.

SECURITY NOTES:
 PROVIDE THREE-ZONE CAM-CHEK SECURITY SYSTEM AS INDICATED BY OWNER AND PER THE MANUFACTURERS SPECIFICATIONS.
 ZONE1: INDEPENDANT SECURITY COPE FOR EACH ZONE1, OFFICE AREA ENTRY ROOMS ONLY.
 ZONE2: AREA FROM PERIMETER TO PERIMETER OF ACCESS, SEE SITE PLAN.



118	EXP	30x0
-----	-----	------

DELTA ROOFING
PORTLAND, MAINE

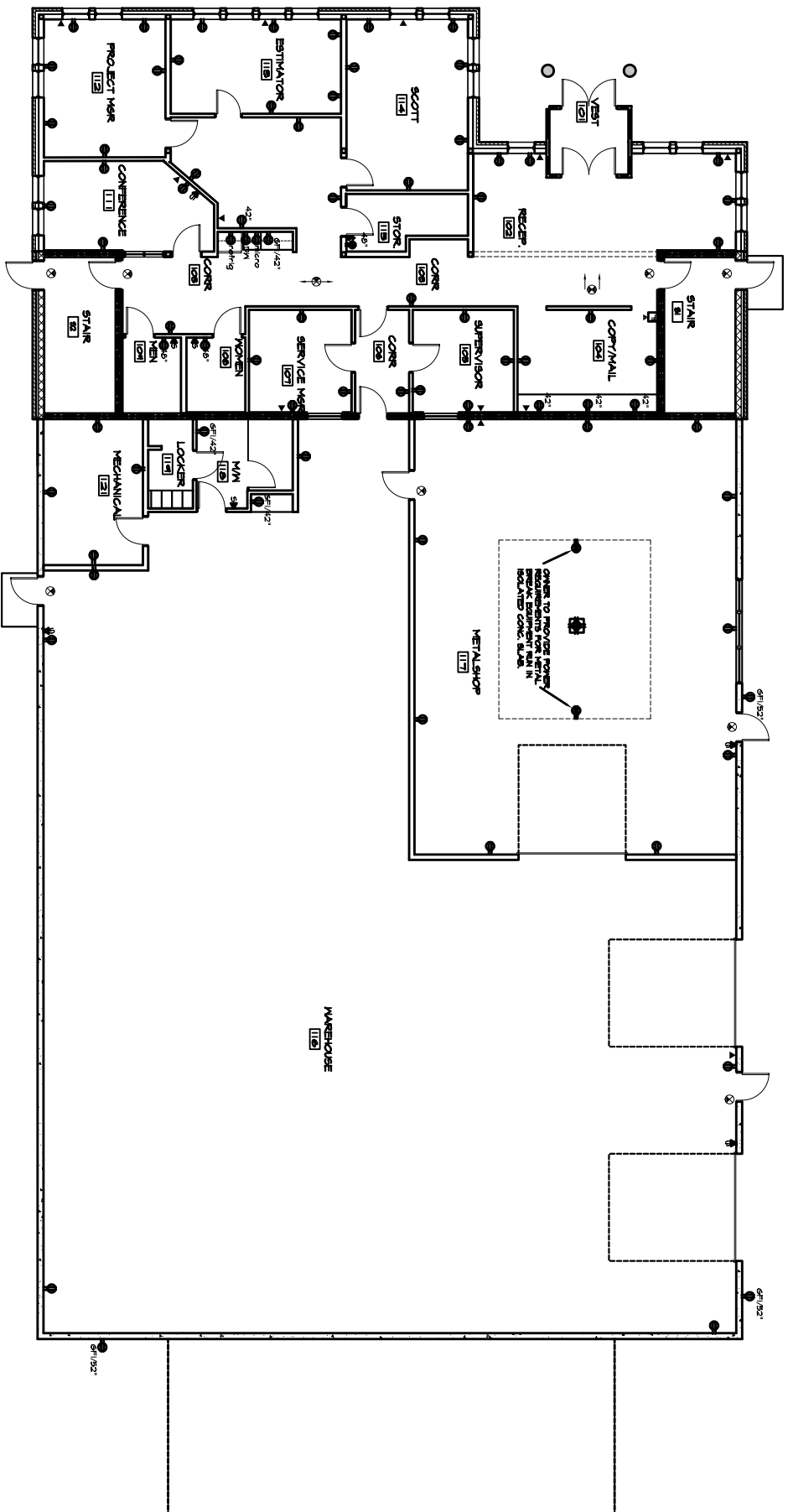
ARCHITECTURE INTERIOR DESIGN PLANNING
P D T ARCHITECTS
 40 DARTMOUTH STREET
 PORTLAND, ME 04101
 207.775.4100
 207.775.6006 FAX

40 DARTMOUTH STREET
 PORTLAND, ME 04101
 207.775.4100
 207.775.6006 FAX

Copyright 2006
 P.D.T. Architects
 Reprint or publication of the contents of this document is not permitted without the written permission of P.D.T. Architects.

JOB NO. 06-136
SCALE: 1/8"=1'-0"
ISSUE: PERMIT SET
DATE: JUNE 23, 2006
TITLE: SECOND FLOOR LIGHTING AND SWITCHING PLAN
SHEET: A2.2

1 FIRST FLOOR POWER PLAN

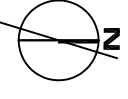


GRAPHIC LEGEND:

- ⊗ EMERGENCY EXIT SIGNAL
- ⊕ AUDIO/VISUAL FIRE ALARM (80' APF)
- ⊖ VISUAL STROBE FIRE ALARM (80' APF)
- ⊙ EMERGENCY PACK
- ⊠ 34x34 FLUORESCENT
- ⊡ 24x48 FLUORESCENT
- ⊢ 12x48 FLUORESCENT
- ⊣ 12x16 FLUORESCENT
- ⊤ RECESSED CAN
- ⊖ METAL HALIDE DOWNLIGHT
- ⊙ WALL WASHER
- TRACK LIGHTING
- ⊠ EXTERIOR WALL PACK
- ⊠ MECHANICAL SUPPLY/RETURN
- ⊠ ACCESS PANEL
- ⊠ OVERHEAD DOOR OPERATOR
- ⊠ OVERHEAD CONTROL (MOVES FROM ROOM)
- ⊠ SINGLE POLE SWITCH
- ⊠ 3-WAY SWITCH
- ⊠ DIMMER SWITCH
- ⊠ DUPLEX OUTLET
- ⊠ GFI OUTLET (Ground Fault)
- ⊠ 220 OUTLET
- ⊠ CANV (Cable TV)
- ⊠ TELEPHONE/DATA
- ⊠ SPECIAL CONNECTION
- ⊠ SWITCH/OUTLET
- ⊠ FLOOR OUTLET
- ⊠ PULL-DOWN DUPLEX OUTLET

NOTE: OUTLETS HAVE BEEN INDICATED ON LIGHTING PLANS IN CASES WHERE OUTLETS SHARE THE SAME LOCATION AS INDICATED ON THE POWER PLAN.

SECURITY NOTES:
 PROVIDE THE SCENE CAMERA SECURITY SYSTEM PER THE AND INSTALL AS PER MANUFACTURERS SPECIFICATIONS.
 ZONES (INTERMEDIATE SECURITY CODE FOR EACH ZONE), WAREHOUSE AREA (WAREHOUSE DOOR ONLY) AND AREA PERIMETER FENCE (TWO POINTS OF ACCESS) SEE SITE PLAN.



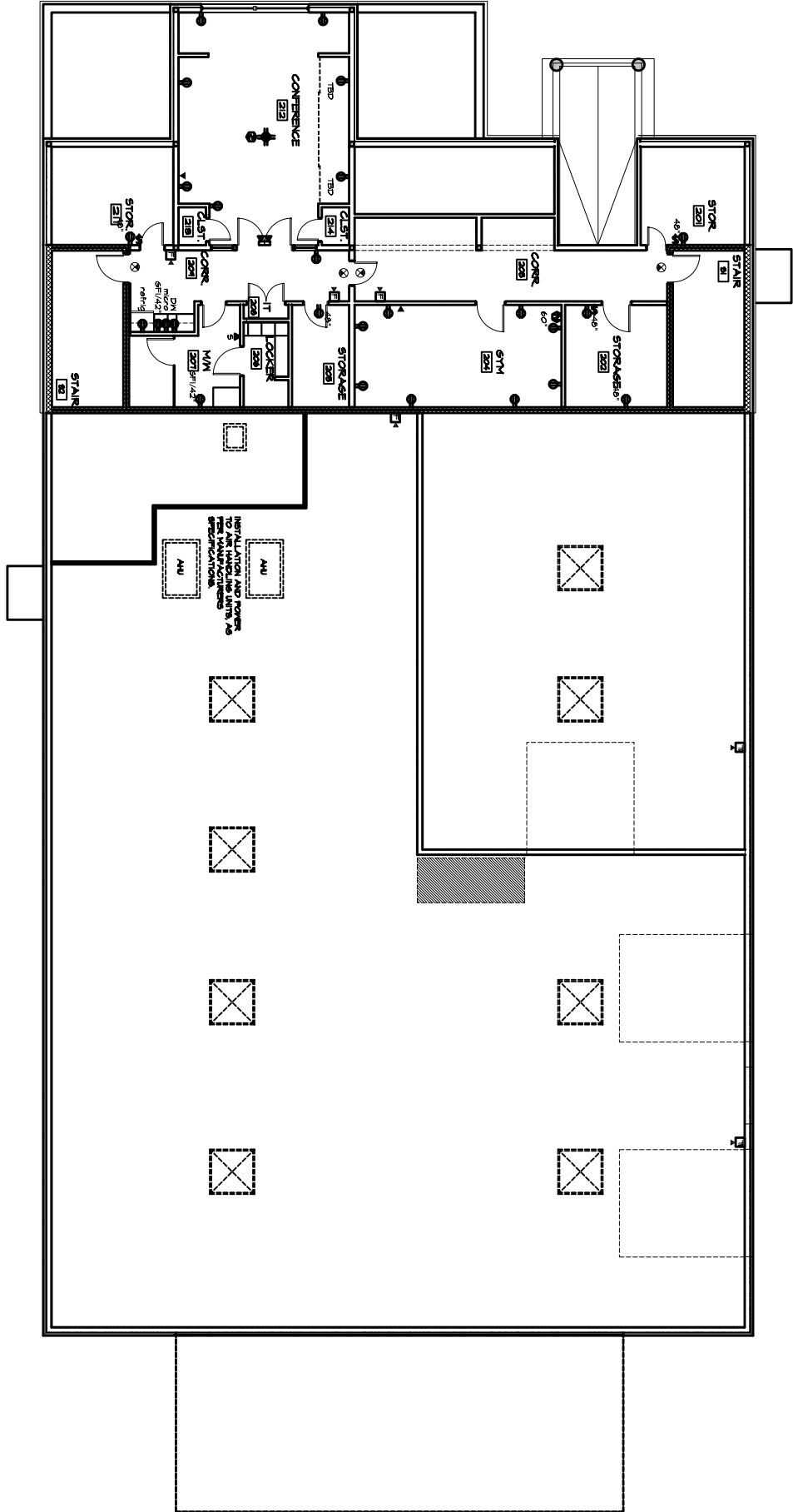
ARCHITECTURE
 INTERIOR DESIGN
 PLANNING
P D T ARCHITECTS
 49 DARTMOUTH STREET
 PORTLAND, ME 04101
 TEL: 754-5111
 FAX: 754-5101
 207-775-2694 FAX

COPYRIGHT 2006
 PDI Architects
 Based on a reproduction of the
 contents of this document in any
 form or by any means without the
 permission of PDI Architects.

DELTA ROOFING
 PORTLAND, MAINE

JOB NO. 05-136	SCALE 1/8"=1'-0"	DATE JUNE 23, 2006	TITLE FIRST FLOOR POWER PLAN
DRWN: CHK. MEL	ISSUE PERMIT SET		
			SHEET A2.3

1 SECOND FLOOR PLAN



GRAPHIC LEGEND:

- ⊙ EMERGENCY EXIT SIGNAL
- Ⓜ AUDIOVISUAL FIRE ALARM (60" AFF)
- Ⓜ VISUAL STROBE FIRE ALARM (60" AFF)
- Ⓜ ENERGY PACK
- Ⓜ 24x24 FLUORESCENT
- Ⓜ 24x48 FLUORESCENT
- Ⓜ 12x48 FLUORESCENT
- 12x18 FLUORESCENT
- RECESSED CAN
- METAL HALIDE DOWNLIGHT
- WALL WASHER
- TRACK LIGHTING
- EXTERIOR WALL PACK
- MECHANICAL SUPPLY/RETURN
- ACCESS PANEL
- OVERHEAD DOOR OPERATOR CONTROL - MOVES 4 FEET FROM
- Ⓜ SINGLE POLE SWITCH
- Ⓜ 3-WAY SWITCH
- Ⓜ DIMMER SWITCH
- Ⓜ DUPLEX OUTLET
- Ⓜ GFI OUTLET (Ground Fault)
- Ⓜ 220 OUTLET
- Ⓜ CANY (Cable TV)
- Ⓜ TELEPHONE/DATA
- Ⓜ SPECIAL CONNECTION
- Ⓜ SWITCH/OUTLET
- Ⓜ FLOOR OUTLET
- Ⓜ PULL-DOWN DUPLEX OUTLET

NOTE: OUTLETS HAVE BE INDICATED ON LIGHTING FACE PLATE AS A SYMBOL. ALL OUTLET LOCATIONS ARE INDICATED ON THE POWER PLAN.

SECURITY NOTES:
 PROVIDE THREE-ZONE CARD-KEY SECURITY SYSTEM AS DIRECTED BY OWNER.
 FIRE AND METAL, AS PER MANUFACTURER'S SPECIFICATIONS.
 ZONES VARY BY THE SECURITY CODE FOR EACH ZONE.
 PROVIDE METAL AND METAL DOORS ONLY.
 VANDAL AREA RESISTER PANELS. TWO POINTS OF ACCESS PER THE PLAN.



ARCHITECTURE
 INTERIOR DESIGN
 PLANNING
FDT ARCHITECTS
 40 DARTMOUTH STREET
 PORTLAND, ME 04101
 207.775-1100
 207.775-2694 FAX

COPYRIGHT 2006
 None or reproduction of the contents of this document is not permitted without the written permission of FDT Architects.

DELTA ROOFING
 PORTLAND, MAINE

JOB NO.
 05-136

DRAWN: CHIK
 MBL

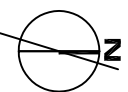
SCALE:
 1/8"=1'-0"

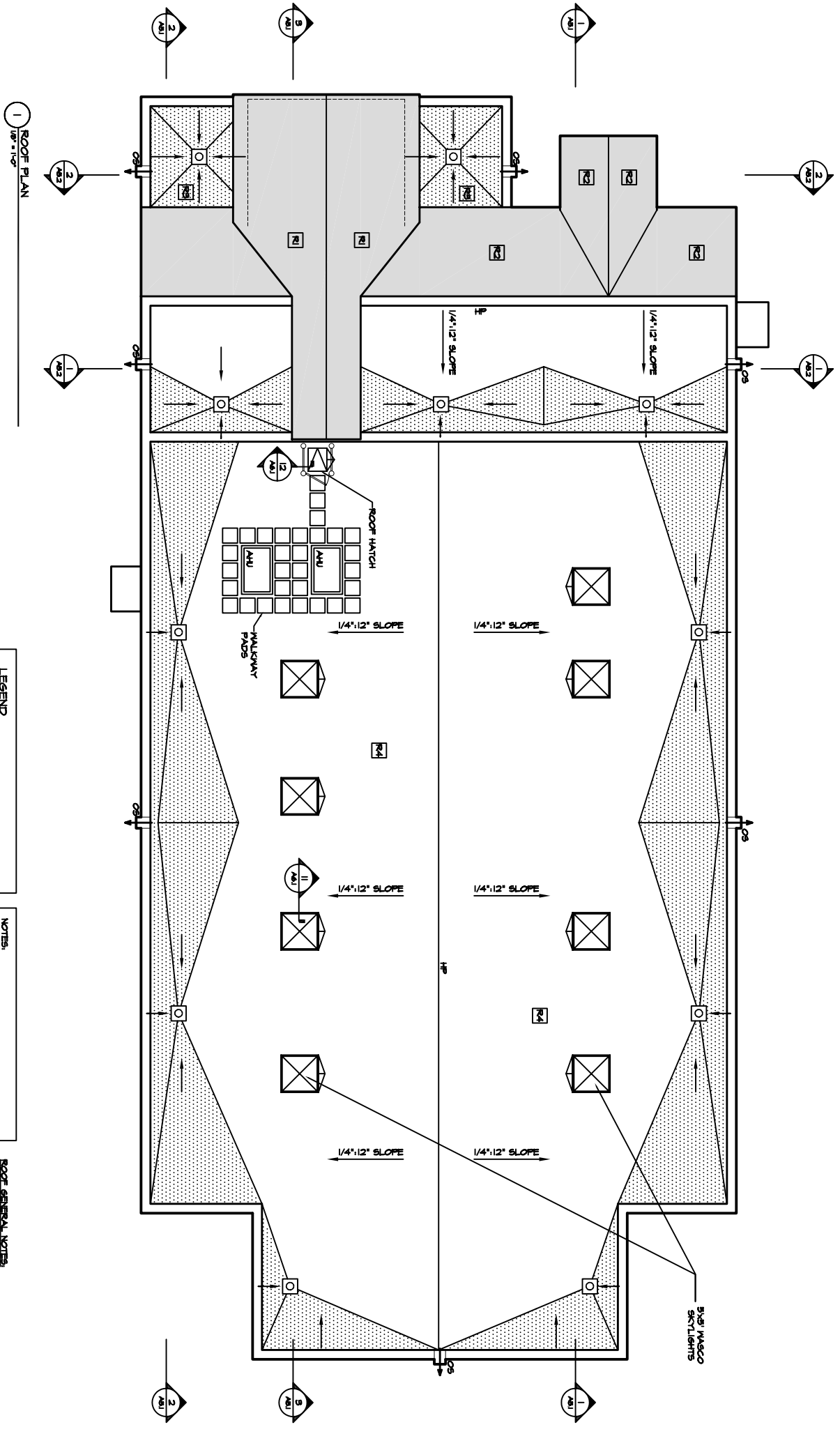
ISSUE
 PERMIT SET
 JUNE 23, 2006

TITLE
 SECOND FLOOR
 POWER PLAN

SHEET

A2.4





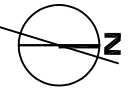
1 ROOF PLAN
1/8" = 1'-0"

LEGEND

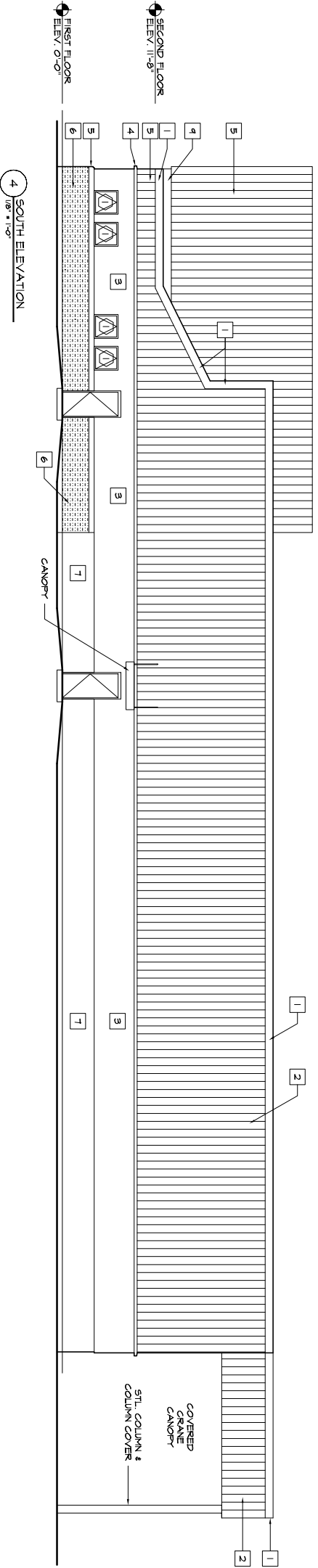
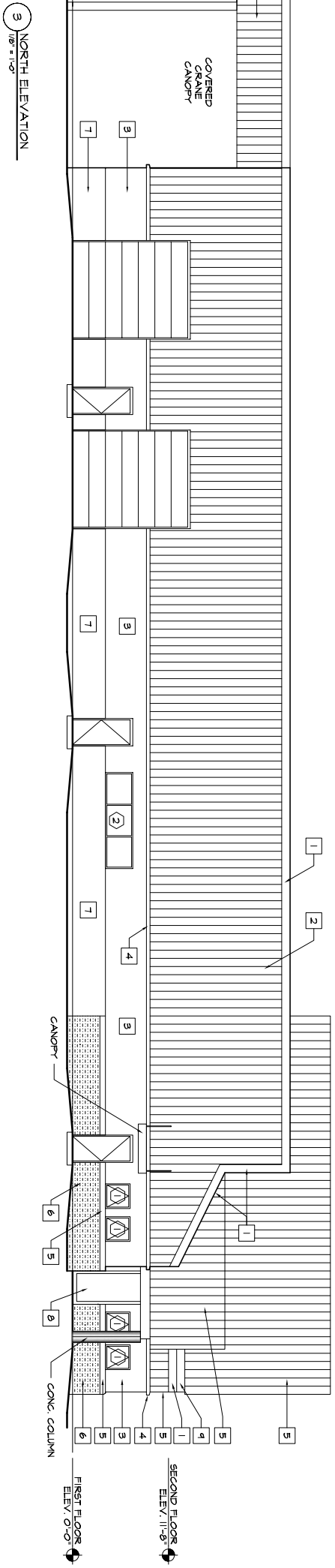
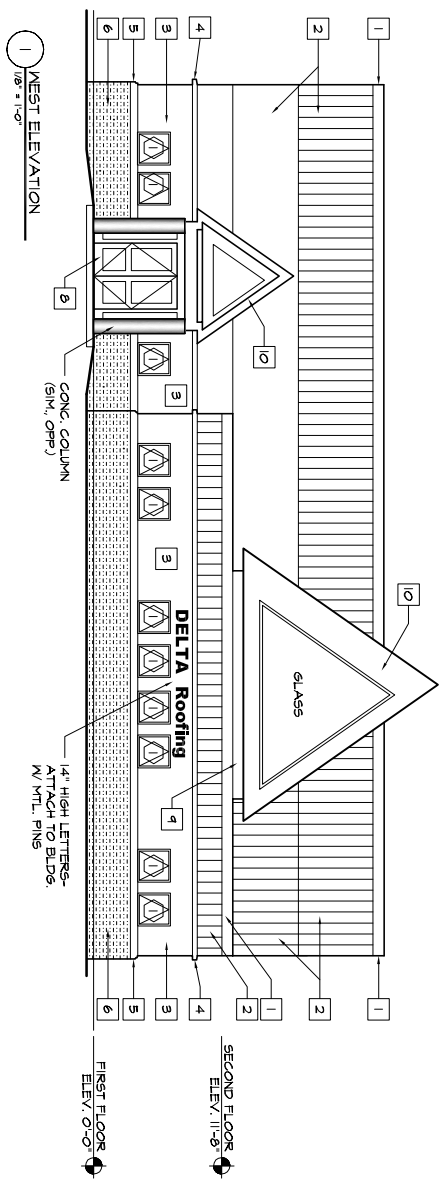
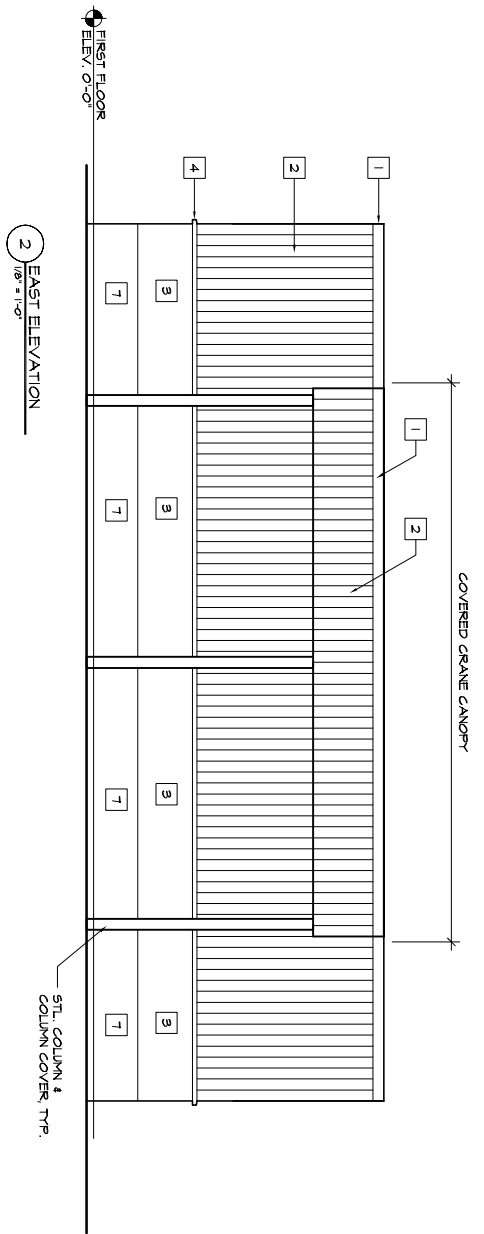
	ROOF DRAIN
	TAPERED INSULATION
	METAL ROOF, RED
	METAL ROOF, GREY
	RUBBER ROOF, BLACK
	RUBBER ROOF, WHITE

- NOTES**
1. VERIFY ALL ROOF PENETRATIONS.
 2. NOT ALL ITEMS PENETRATING ROOF MAY BE SHOWN. VERIFY AND COORDINATE LOCATIONS.
 3. LOCATIONS OF MECH. EQUIPMENT ARE SHOWN IN NAME AND NOT ALL MAY BE SHOWN.
 4. THE MINIMUM SLOPE FOR ANY ROOF PITCH IS 1/4".12" AND
 5. REFER TO GENERAL NOTES
 6. PROVIDE OVERLAP SCUFFERS AT ALL FLAT ROOF AREAS.

- ROOF GENERAL NOTES**
1. PROVIDE FLASHING AT ALL ROOF PENETRATIONS. DETAILS SHOWN ON THE ROOF PLAN OR NOT, UNLESS NOTED OTHERWISE.



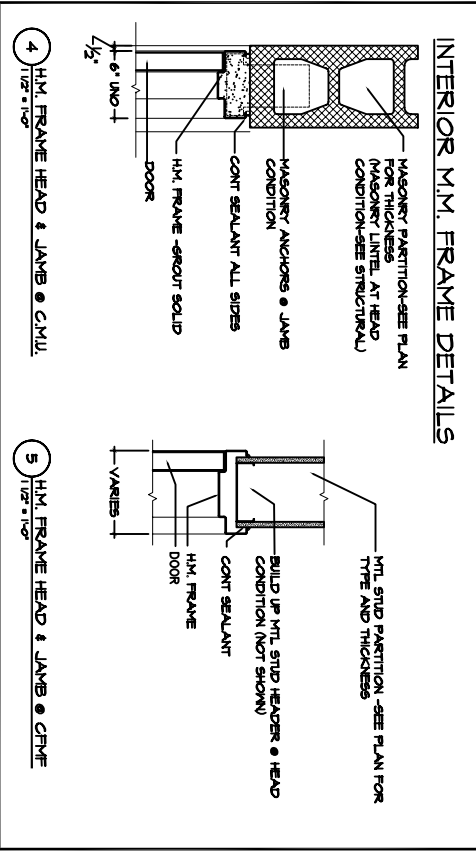
JOB NO. 06-136	DELTA ROOFING PORTLAND, MAINE	COPYRIGHT 2006 PDT Architects Reproduction of this document in any form without the written permission of PDT Architects.	ARCHITECTURE INTERIOR DESIGN PLANNING PDT ARCHITECTS 40 DARTMOUTH STREET PORTLAND, ME 04101 207-775-1100 207-775-2604 FAX
DRAWN: CHIK TEK			
SCALE: AS NOTED			
ISSUE: PERMIT SET JUNE 23, 2006			
TITLE: ROOF PLAN	SHEET: A3.1		



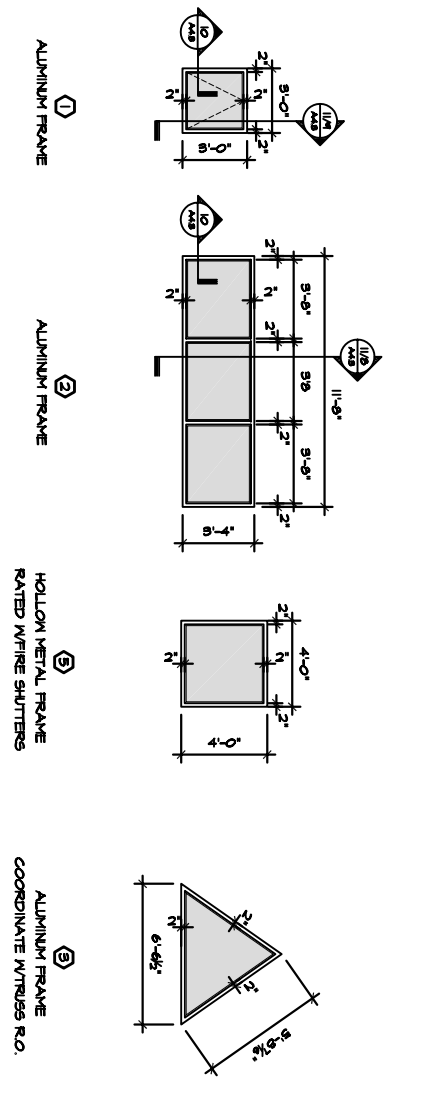
LEGEND

- 1 1/2" PRE-FINISHED METAL STANDING SEAM
- 2 METAL SIDING - TYPE 1
- 3 FLUSH SEAM - TYPE 1
- 4 METAL SIDING - TYPE 2
- 5 METAL CORNICE
- 6 PRE-CAST SILL
- 7 MASONRY VENEER
- 8 EXPOSED CONCRETE
- 9 ALUM./GLASS ENTRY SYSTEM - SEE DOOR SCHED.
- 10 RUBBER MEMBRANE
- 11 METAL PANEL - TYPE 3

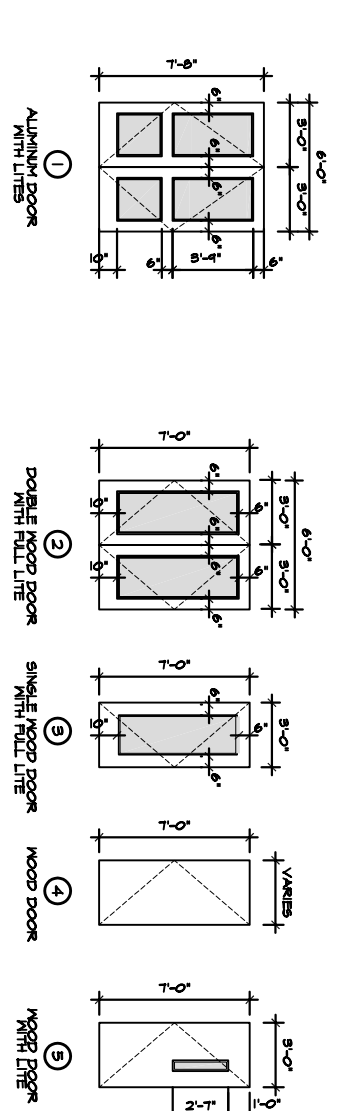
INTERIOR M.M. FRAME DETAILS



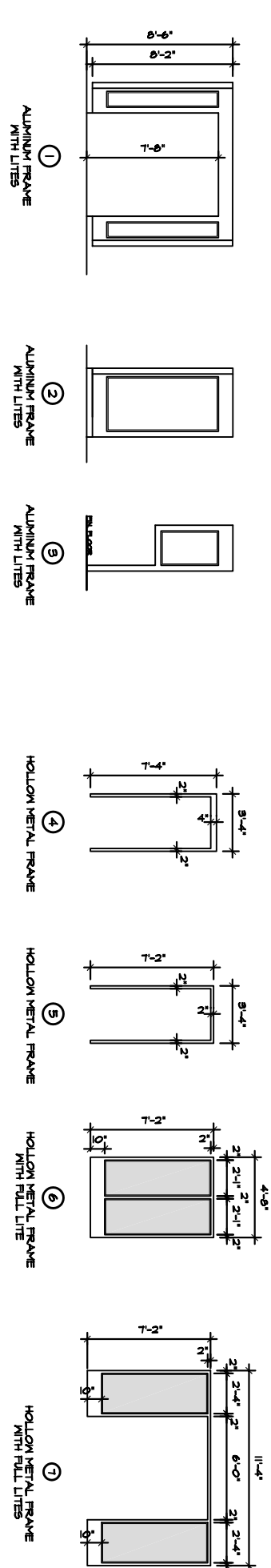
WINDOW TYPES



DOOR TYPES



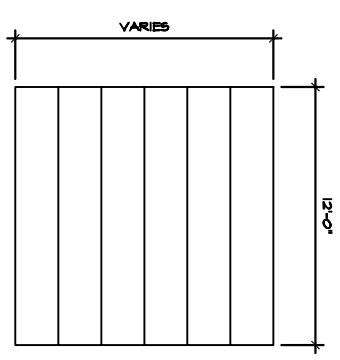
FRAME TYPES



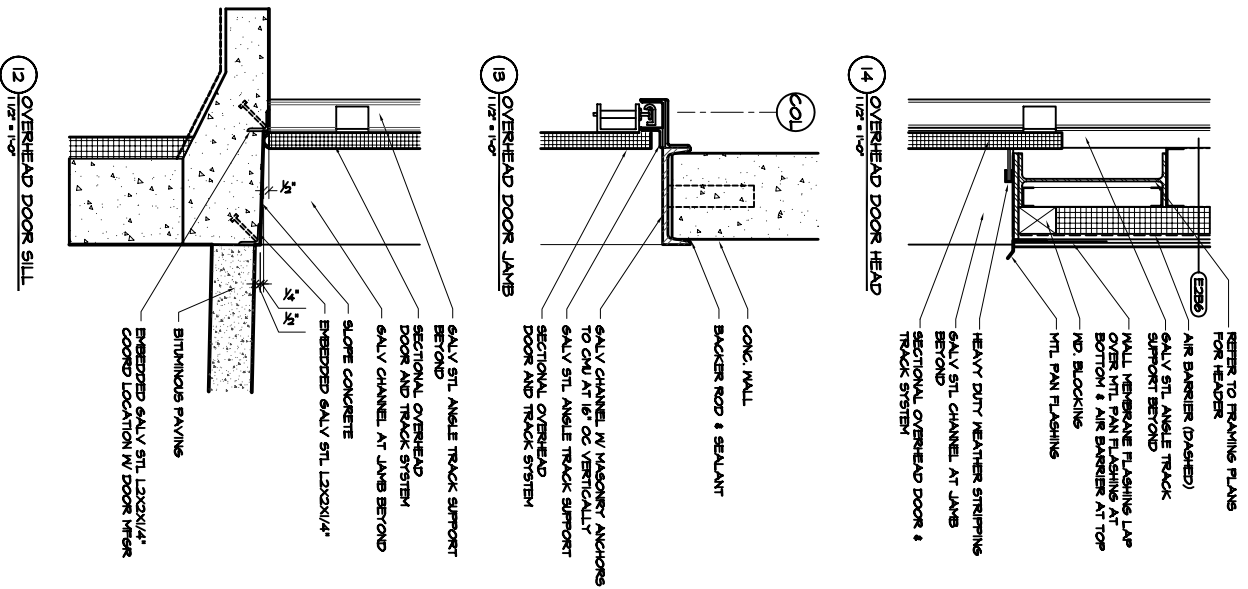
DOOR AND FRAME SCHEDULE

Number	DOOR			FRAME				FIRE RATING	HDNR TYPE	NOTES
	Type	MD	HGT	Type	HEAD	JAMB	SILL			
511	7	3-0	7-0	4	4/A4.2	4/A4.2	--	60 MIN	6	--
512	7	3-0	7-0	4	3/A4.5	4/A4.5	4/A4.5	60 MIN	6	--
519	7	3-0	7-0	4	4/A4.2	4/A4.2	--	60 MIN	6	--
521	7	3-0	7-0	4	4/A4.2	4/A4.5	4/A4.5	60 MIN	6	--
522	7	3-0	7-0	4	3/A4.5	4/A4.5	--	60 MIN	6	--
525	7	3-0	7-0	4	4/A4.2	4/A4.2	--	60 MIN	6	--
1011	1	6-0	7-0	1	--	--	--	--	1	STOREFRONT ASSEMBLY
1012	1	3-0	7-0	5	5/A4.2	5/A4.2	--	--	2	STOREFRONT ASSEMBLY
1061	4	3-0	7-0	5	5/A4.2	5/A4.2	--	--	7	STOREFRONT ASSEMBLY
1062	4	3-0	7-0	5	4/A4.2	4/A4.2	--	60 MIN	7	STOREFRONT ASSEMBLY
1071	7	3-0	7-0	5	5/A4.2	5/A4.2	--	--	6	TYPE B SIDELIGHT FRAME
1081	4	3-0	7-0	5	5/A4.2	5/A4.2	--	--	5	TYPE B SIDELIGHT FRAME
1091	4	3-0	7-0	5	5/A4.2	5/A4.2	--	--	5	TYPE B SIDELIGHT FRAME
1111	4	3-0	7-0	5	5/A4.2	5/A4.2	--	--	7	TYPE B SIDELIGHT FRAME
1121	4	3-0	7-0	5	5/A4.2	5/A4.2	--	--	7	TYPE B SIDELIGHT FRAME
1141	4	3-0	7-0	5	5/A4.2	5/A4.2	--	--	7	TYPE B SIDELIGHT FRAME
1151	4	3-0	7-0	5	7/A4.5	7/A4.5	4/A4.5	--	7	TYPE B SIDELIGHT FRAME
1162	4	3-0	7-0	5	7/A4.5	7/A4.5	4/A4.5	--	3	TYPE B SIDELIGHT FRAME
1163	4	3-0	7-0	5	7/A4.5	7/A4.5	4/A4.5	--	3	TYPE B SIDELIGHT FRAME
1164	7	3-0	7-0	5	7/A4.5	7/A4.5	4/A4.5	--	3	TYPE B SIDELIGHT FRAME
1171	7	3-0	7-0	5	7/A4.5	7/A4.5	4/A4.5	--	3	TYPE B SIDELIGHT FRAME
1172	4	3-0	7-0	5	7/A4.5	7/A4.5	4/A4.5	--	3	TYPE B SIDELIGHT FRAME
1173	4	3-0	7-0	5	7/A4.5	7/A4.5	4/A4.5	--	3	TYPE B SIDELIGHT FRAME
1181	6	3-0	7-0	5	5/A4.2	5/A4.2	--	--	5	TYPE B SIDELIGHT FRAME
1182	6	3-0	7-0	5	5/A4.2	5/A4.2	--	--	5	TYPE B SIDELIGHT FRAME
1183	6	3-0	7-0	5	5/A4.2	5/A4.2	--	--	5	TYPE B SIDELIGHT FRAME
1211	6	3-0	7-0	5	5/A4.2	5/A4.2	--	60 MIN	4	TYPE B SIDELIGHT FRAME
2011	6	2-4	7-0	5	5/A4.2	5/A4.2	--	--	7	TYPE B SIDELIGHT FRAME
2021	6	3-0	7-0	5	5/A4.2	5/A4.2	--	--	7	TYPE B SIDELIGHT FRAME
2031	5	3-0	7-0	5	5/A4.2	5/A4.2	--	--	7	TYPE B SIDELIGHT FRAME
2041	3	3-0	7-0	5	5/A4.2	5/A4.2	--	--	7	TYPE B SIDELIGHT FRAME
2051	4	3-0	7-0	5	5/A4.2	5/A4.2	--	--	7	TYPE B SIDELIGHT FRAME
2061	6	3-0	7-0	5	5/A4.2	5/A4.2	--	--	7	TYPE B SIDELIGHT FRAME
2071	4	4-0	7-0	5	5/A4.2	5/A4.2	--	--	4	TYPE B SIDELIGHT FRAME
2081	4	4-0	7-0	5	5/A4.2	5/A4.2	--	--	4	TYPE B SIDELIGHT FRAME
2111	4	4-0	7-0	5	5/A4.2	5/A4.2	--	--	4	TYPE B SIDELIGHT FRAME
2121	4	3-0	7-0	5	5/A4.2	5/A4.2	--	--	7	TYPE B SIDELIGHT FRAME
2131	4	3-0	7-0	5	5/A4.2	5/A4.2	--	--	4	TYPE B SIDELIGHT FRAME
2141	4	3-0	7-0	5	5/A4.2	5/A4.2	--	--	4	TYPE B SIDELIGHT FRAME

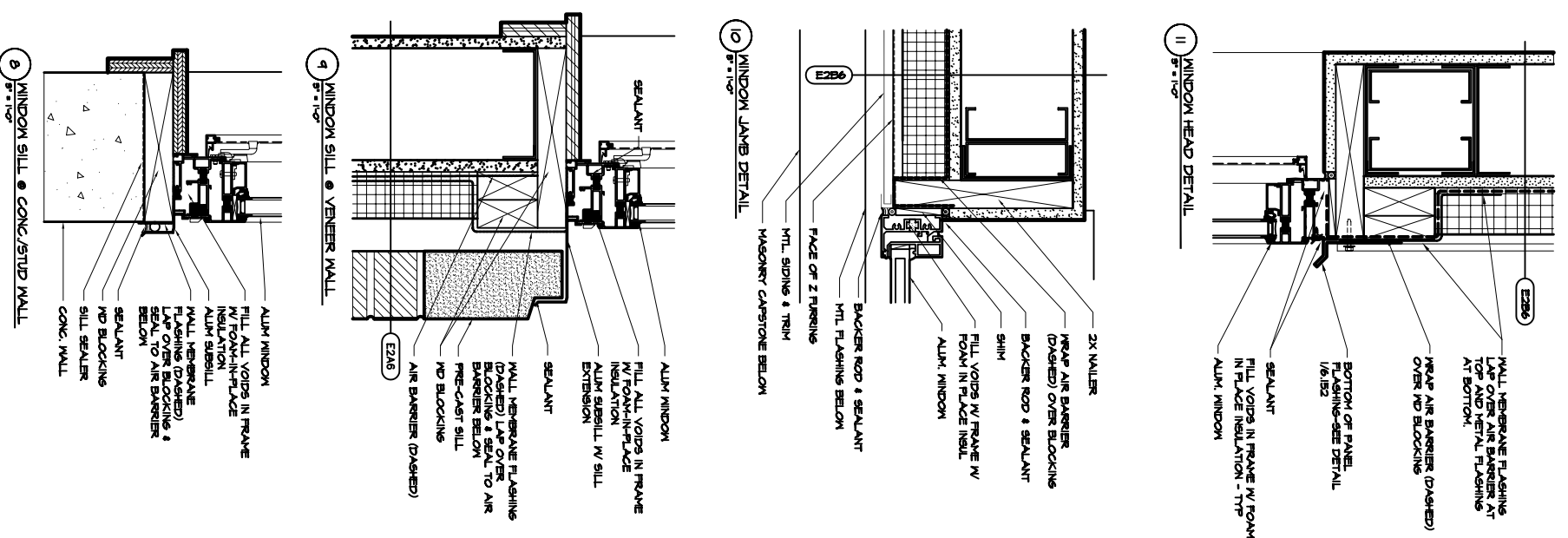
- NOTES
- COORDINATE SPECIFIC LABELING REQUIREMENTS FOR OPENINGS WITH APPLICABLE CODES AND CONSTRUCTION OF DOOR AND FRAME ASSEMBLIES.
 - ALL DOOR AND STEEL DOORS TO BE 3/4" THICK.
 - SEE SPECIFICATIONS AND DETAILS FOR SILLS AND THRESHOLDS.
 - PAINT ALL METAL FRAME P-2.
 - ALL STEEL DOORS WITH CLOSERS TO RECEIVE KICK PLATES ON RUSH SIDE. THE A - (DOOR WIDTH MINUS 1") X 10". THE B - (DOOR WIDTH MINUS 1") X 30".



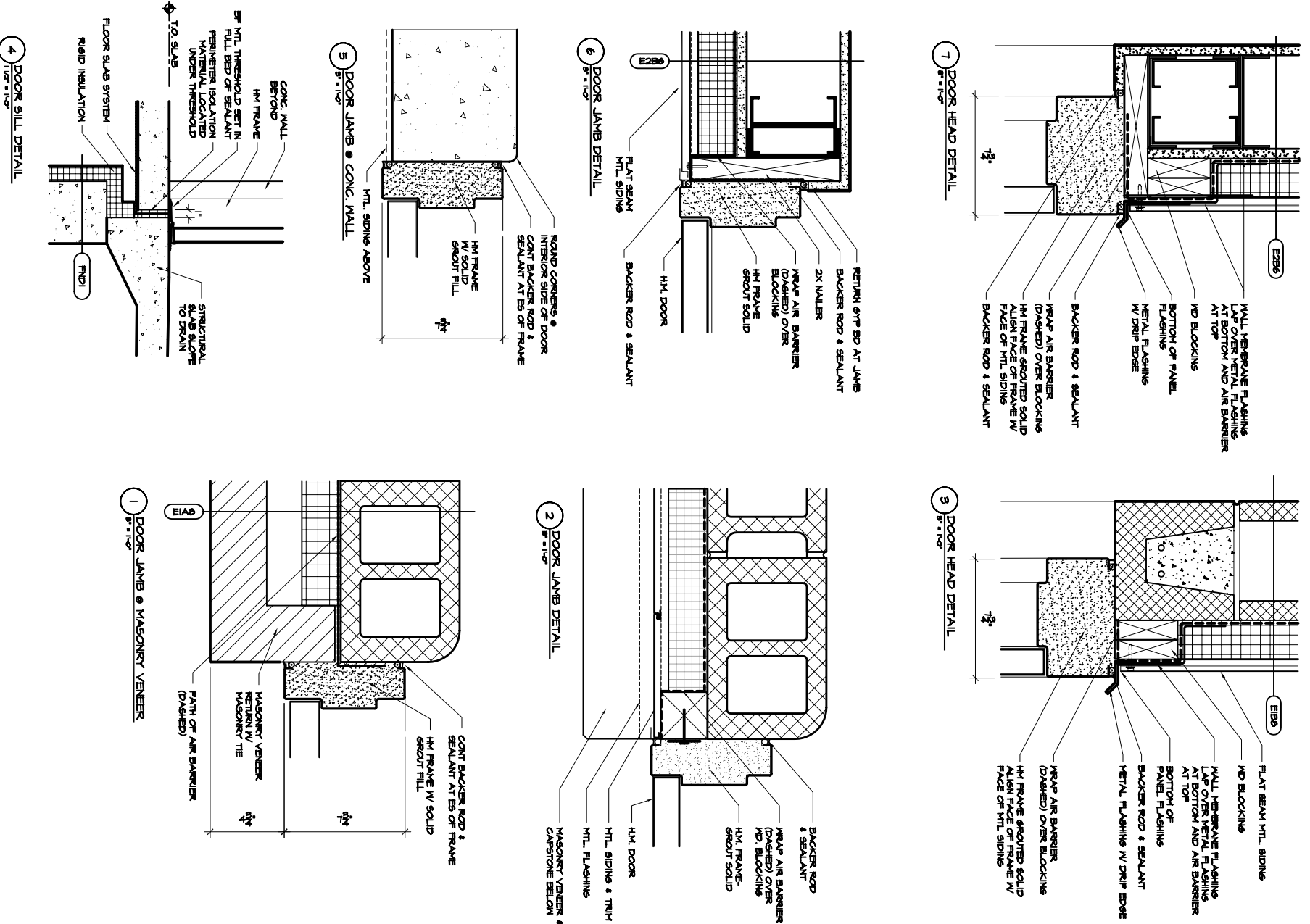
OVERHEAD DOOR DETAILS



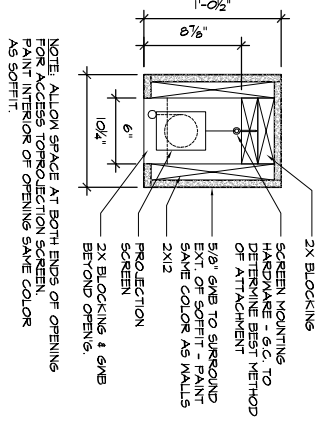
EXTERIOR WINDOW DETAILS



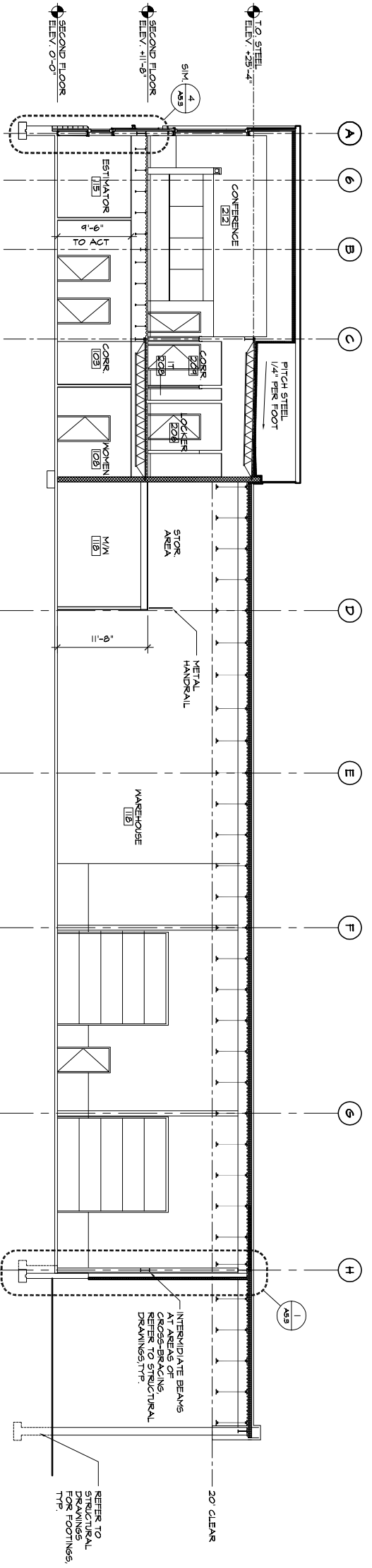
EXTERIOR DOOR DETAILS



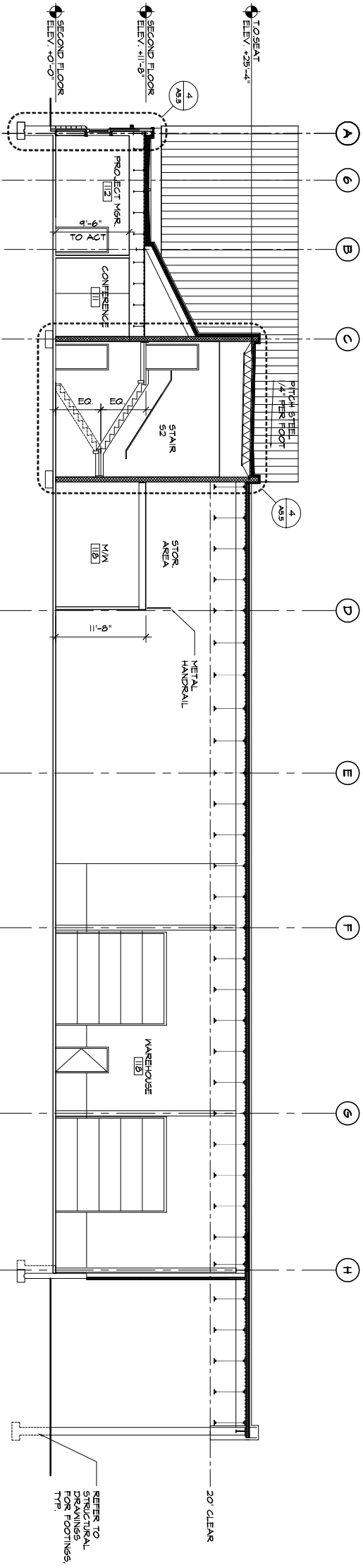
4 PROJECTION SCREEN SOFFIT DETAIL
1/2" = 1'-0"



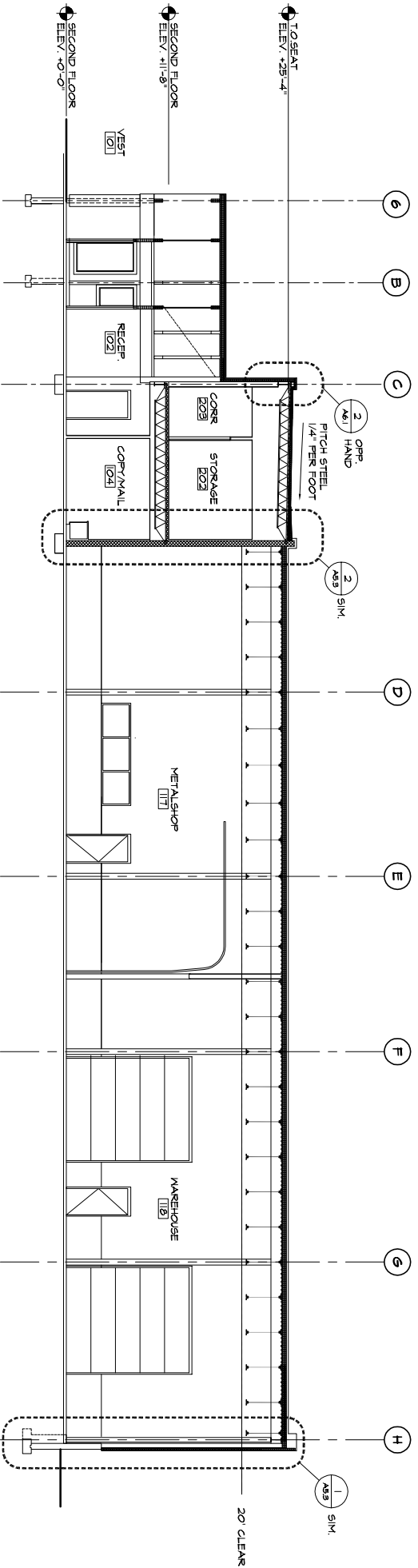
3 BUILDING SECTION
1/8" = 1'-0"

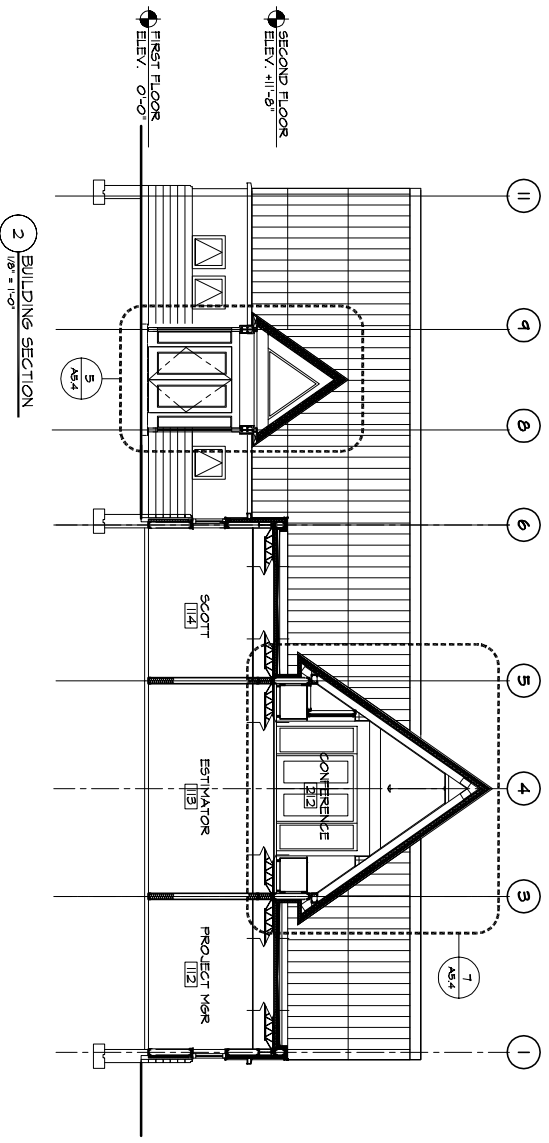


2 BUILDING SECTION
1/8" = 1'-0"

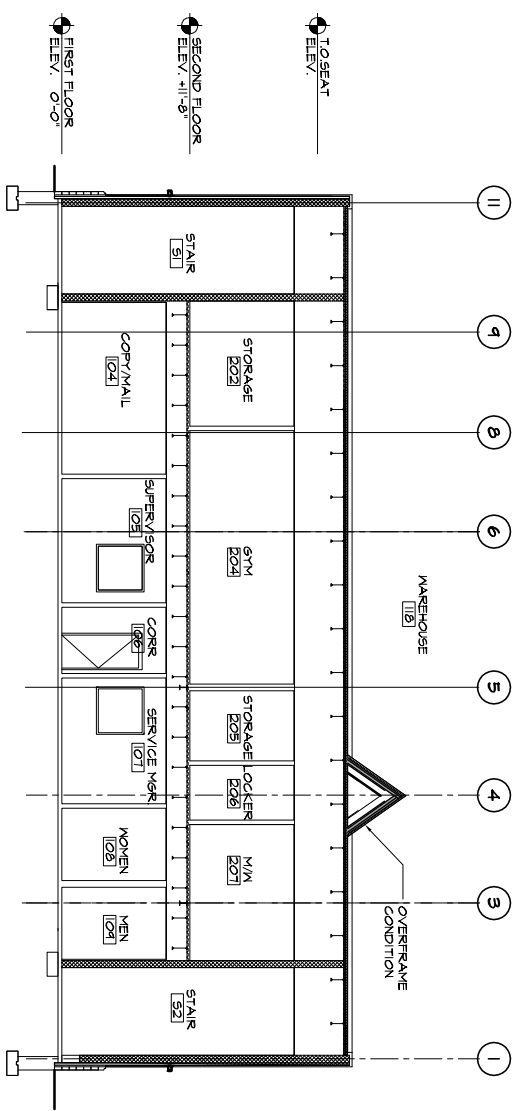


1 BUILDING SECTION
1/8" = 1'-0"





2 BUILDING SECTION
1/8" = 1'-0"



1 BUILDING SECTION
1/8" = 1'-0"



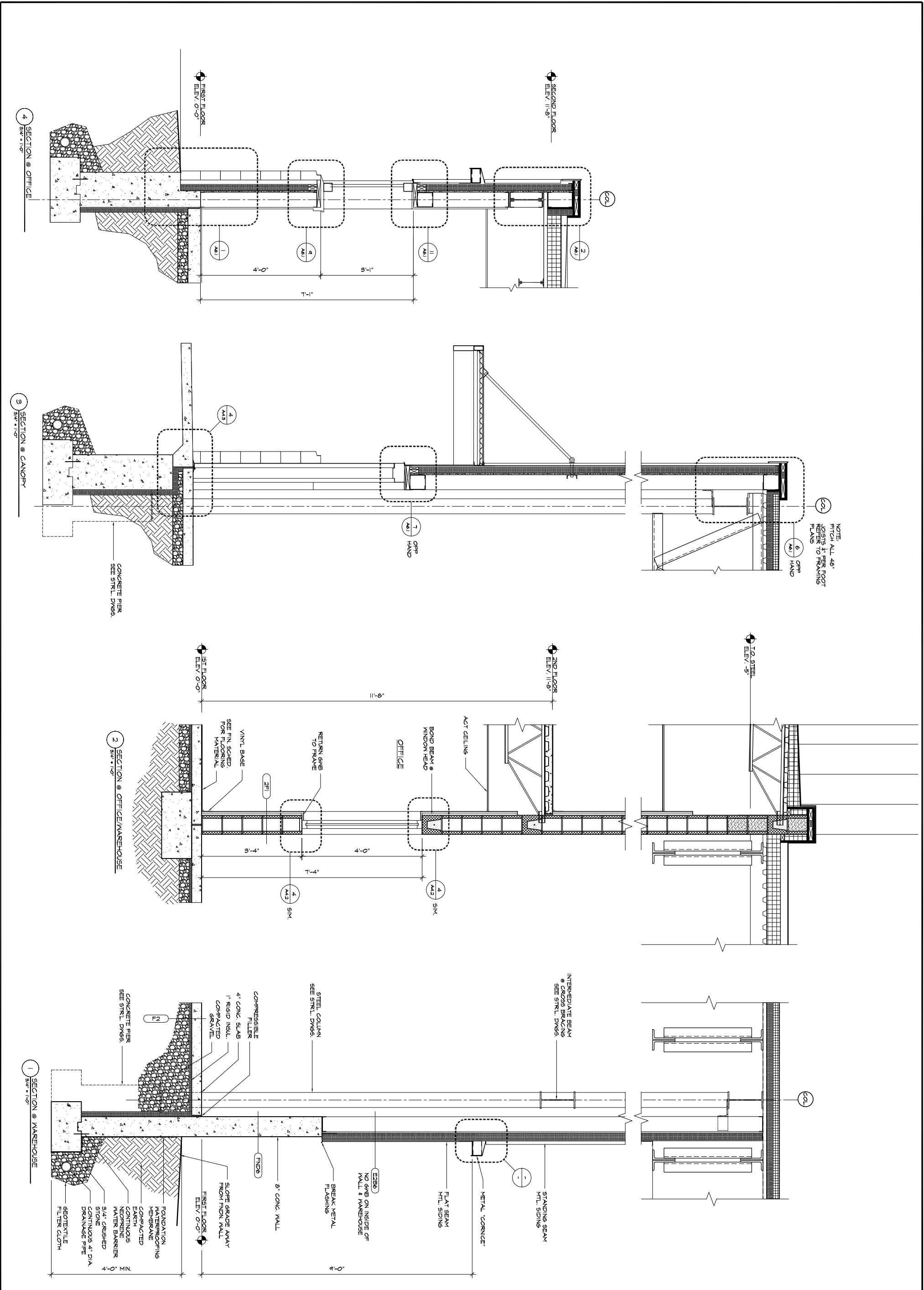
ARCHITECTURE
INTERIOR DESIGN
PLANNING
49 DARTMOUTH STREET
PORTLAND, ME 04101
207-775-1059
207-775-2694 FAX

COPYRIGHT 2006
PDT Architects
None or reproduction of the
contents of this document is not
permitted without the
written permission of PDT Architects.

DELTA ROOFING

PORTLAND, MAINE

JOB NO. 05-136	DRWN. CHK. EJR	SCALE AS NOTED	ISSUE PERMIT SET JUNE 23, 2006	TITLE BUILDING SECTIONS	SHEET A5.2
-------------------	-------------------	-------------------	--------------------------------------	-------------------------------	---------------



SCALE	AS NOTED
ISSUE	PERMIT SET JUNE 23, 2006
TITLE	WALL SECTIONS
SHEET	A5.3

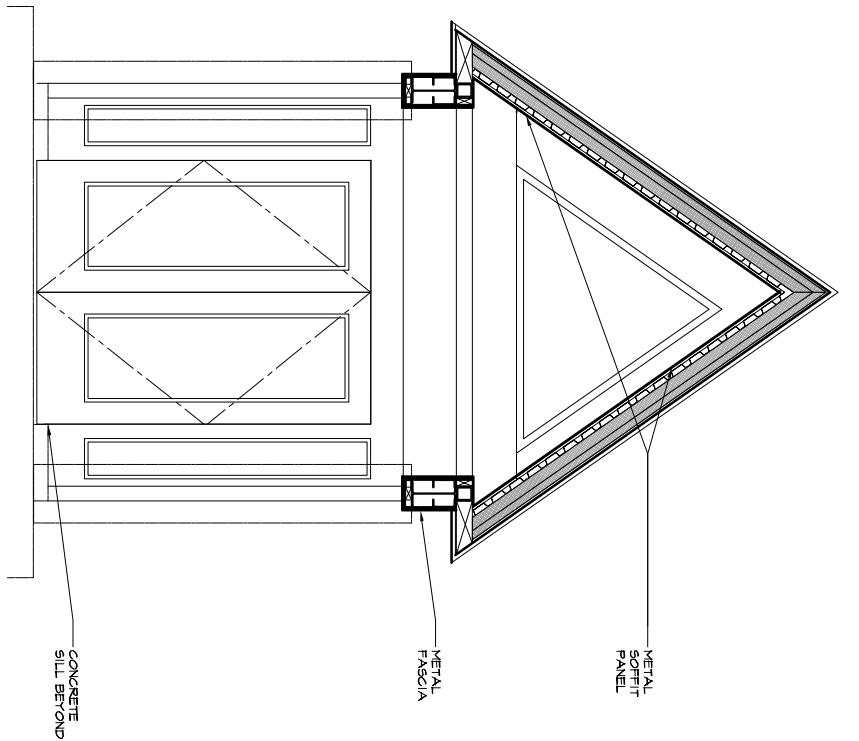
DELTA ROOFING
PORTLAND, MAINE

JOB NO. 05-136
DRWN. CHK. EJR

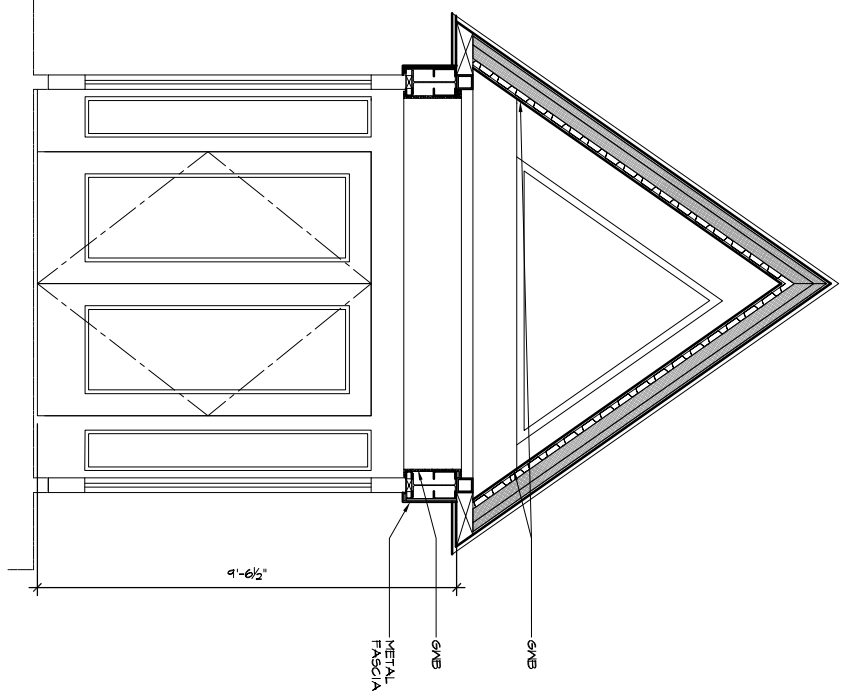
COPYRIGHT 2006
PDT Architects
Reproduction of this document in any form without the written permission of PDT Architects.

PDT ARCHITECTS

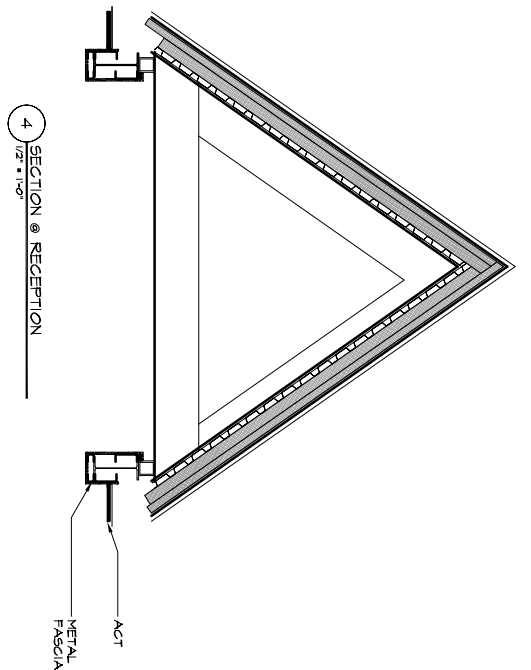
49 DARTMOUTH STREET
PORTLAND, ME 04101
207-755-1059
207-755-2694 FAX



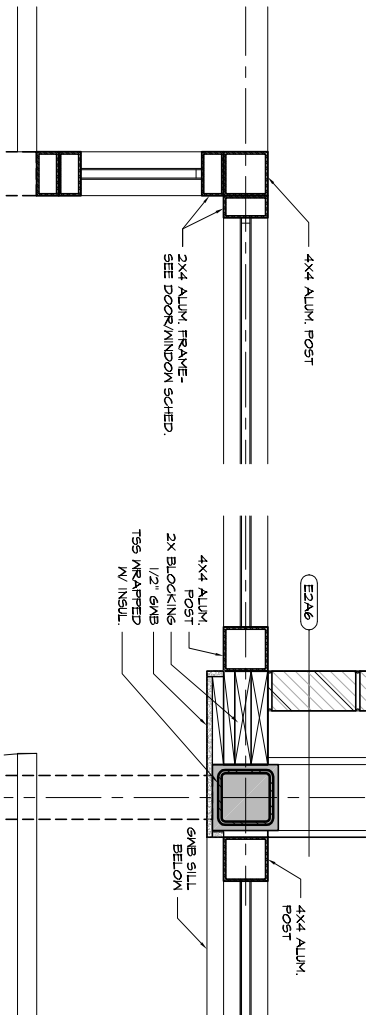
6 SECTION @ EXTERIOR ENTRY CANOPY
1/2" = 1'-0"



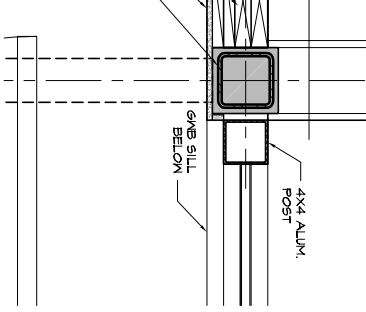
5 SECTION @ ENTRY VESTIBULE
1/2" = 1'-0"



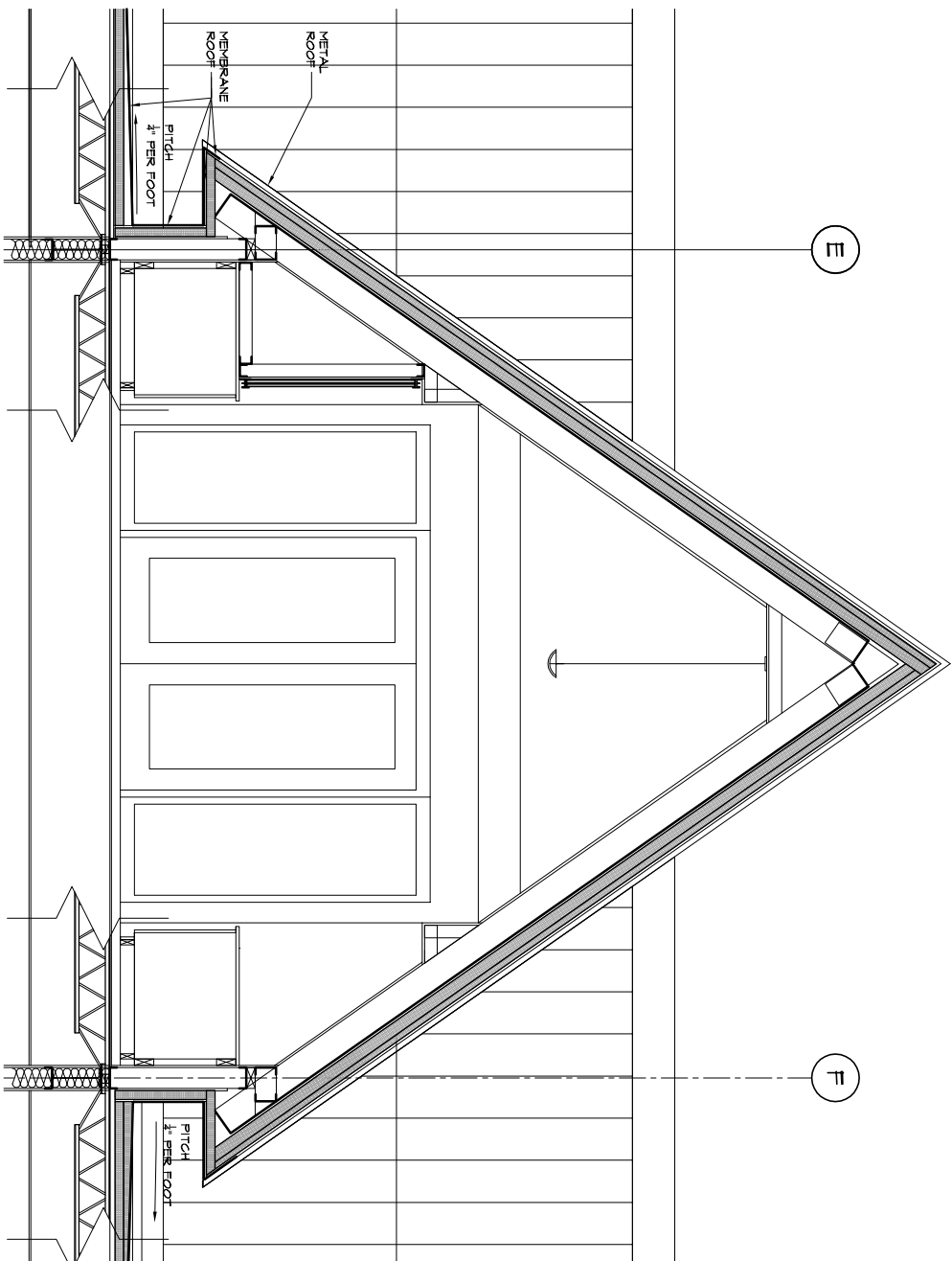
4 SECTION @ RECEPTION
1/2" = 1'-0"



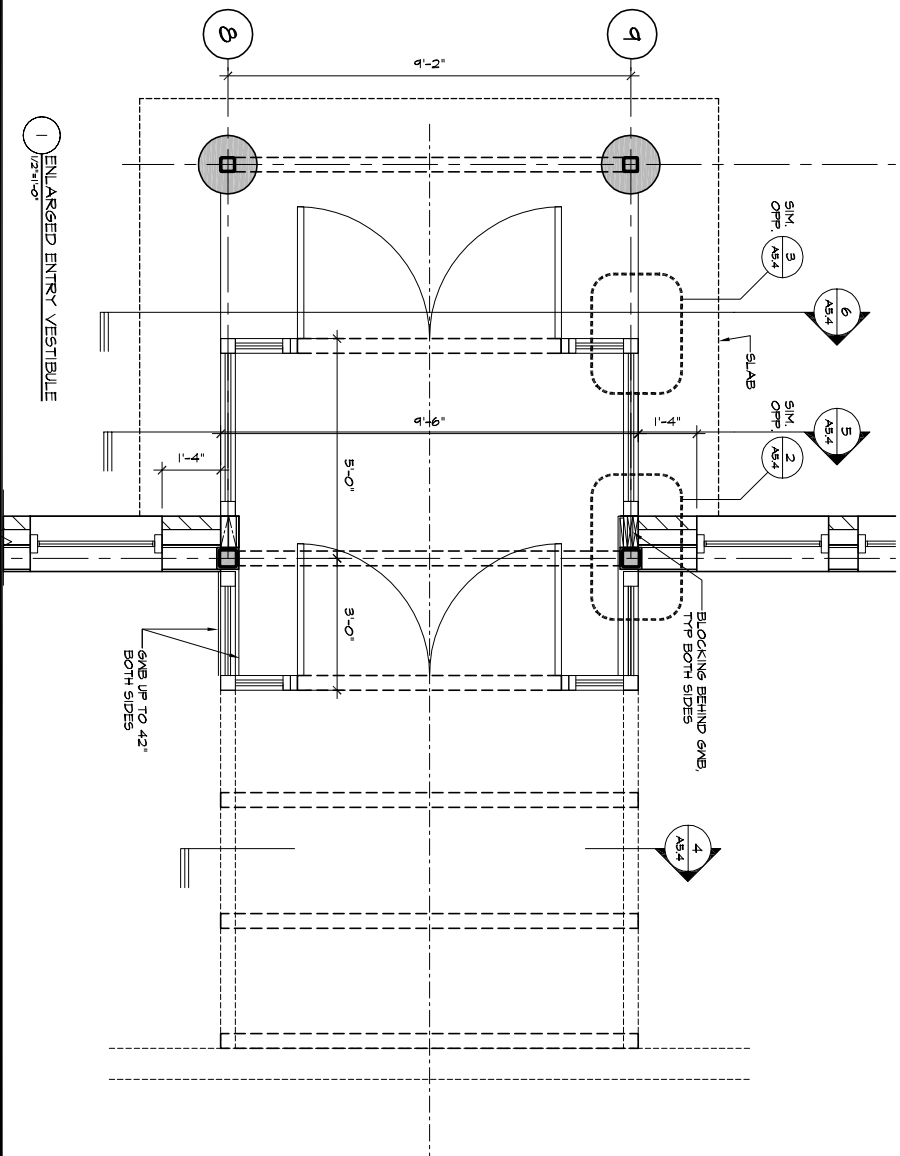
3 PLAN DETAIL @ ALUM. FRAME
1/2" = 1'-0"



2 PLAN DETAIL @ ALUM. FRAME
1/2" = 1'-0"



7 SECTION @ CONFERENCE ROOM
1/2" = 1'-0"



1 ENLARGED ENTRY VESTIBULE
1/2" = 1'-0"

DELTA ROOFING
PORTLAND, MAINE

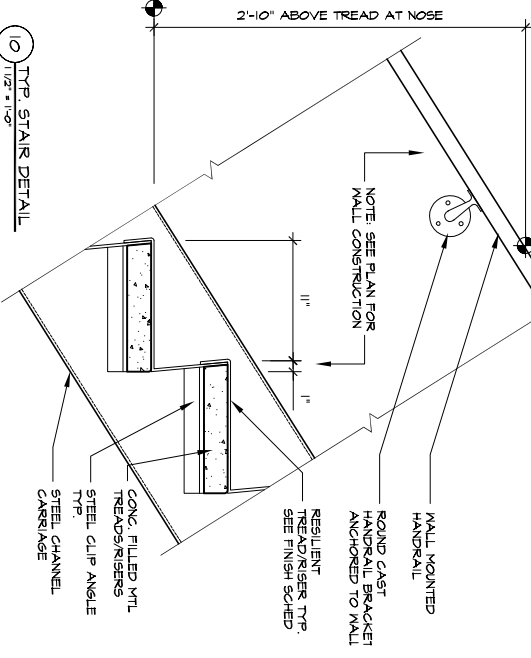
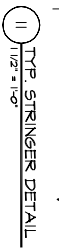
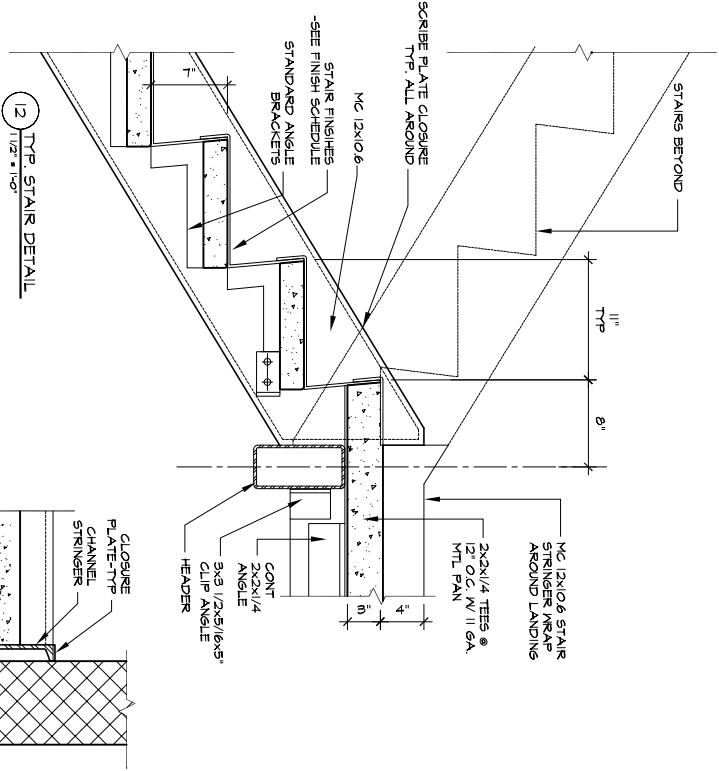
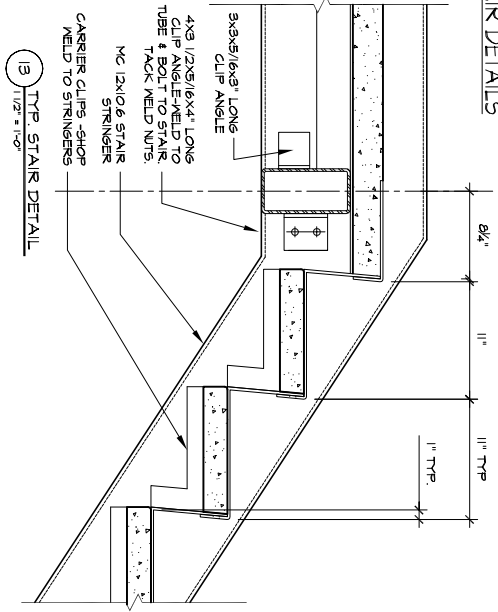


49 DARTMOUTH STREET
PORTLAND, ME 04101
207-755-1059
207-755-2694 FAX

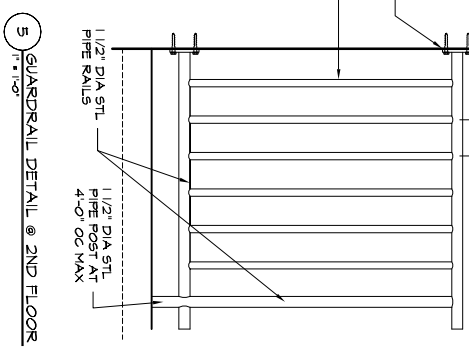
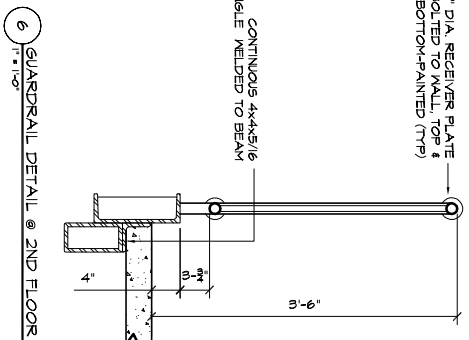
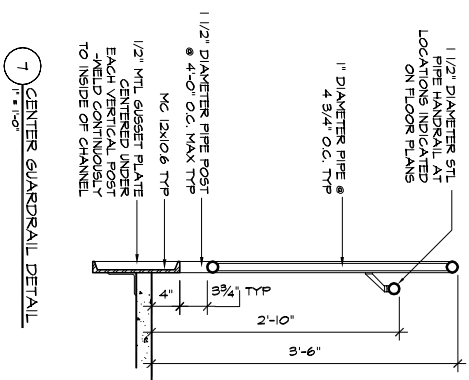
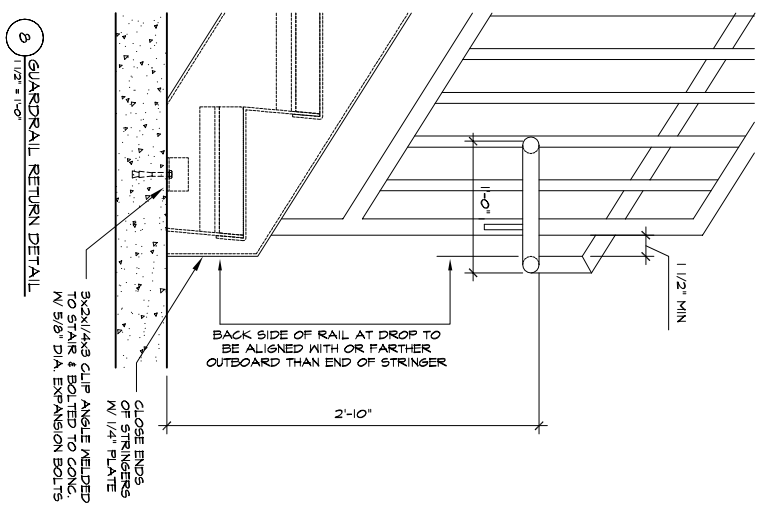
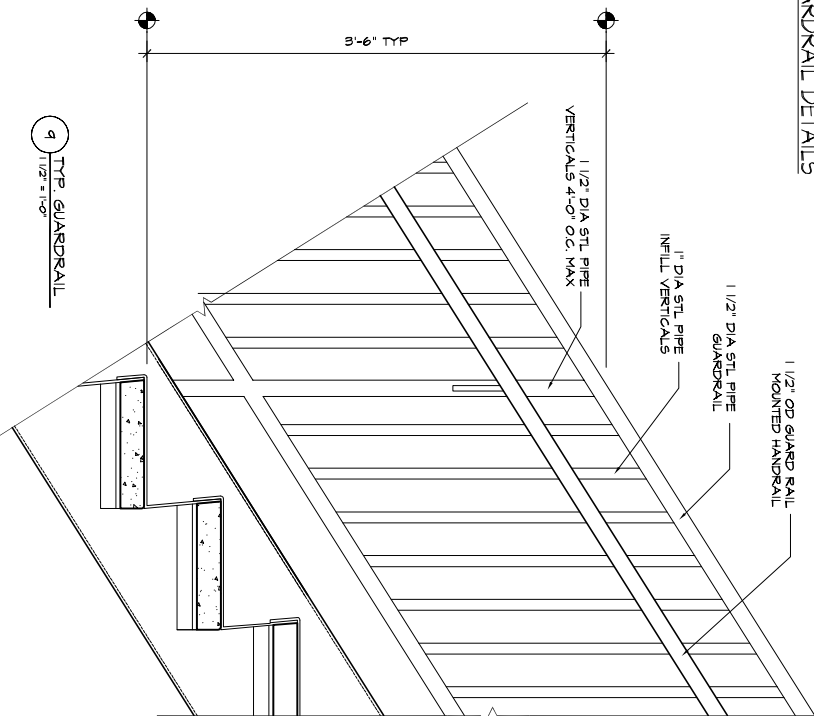
COPYRIGHT 2006
PDT Architects
Reproduction of this document in any
form without the written permission of PDT Architects.

TITLE	GABLE SECTIONS, ENTRY PLAN, DETAILS
ISSUE	PERMIT SET JUNE 23, 2006
SCALE	AS NOTED
DRWN. CHK.	EBR
JOB NO.	05-136
SHEET	A5.4

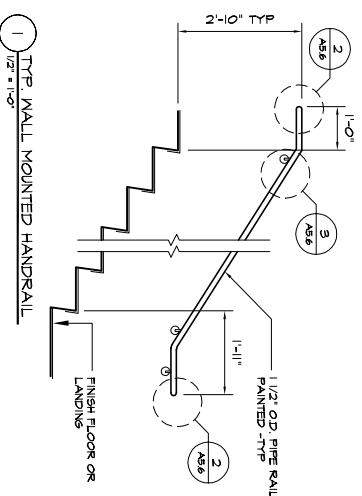
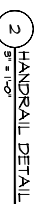
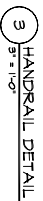
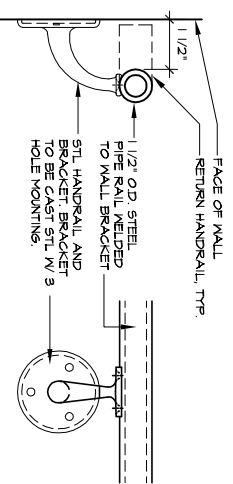
STAIR DETAILS

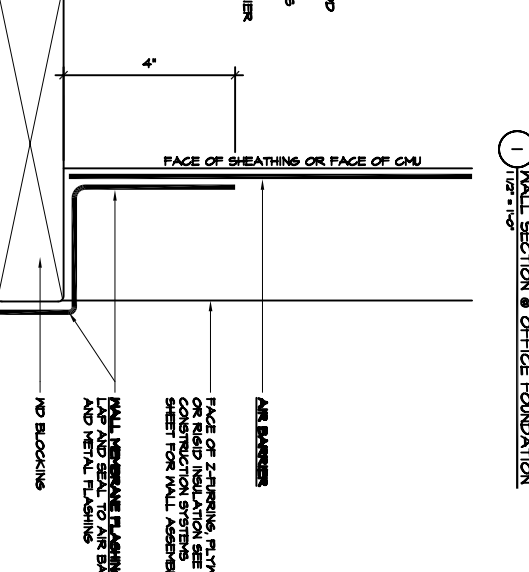
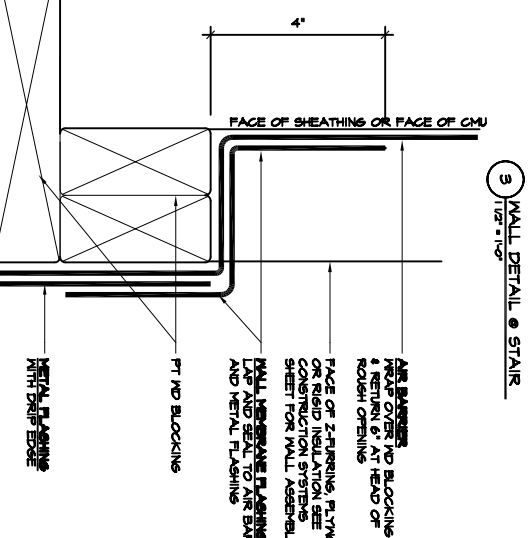
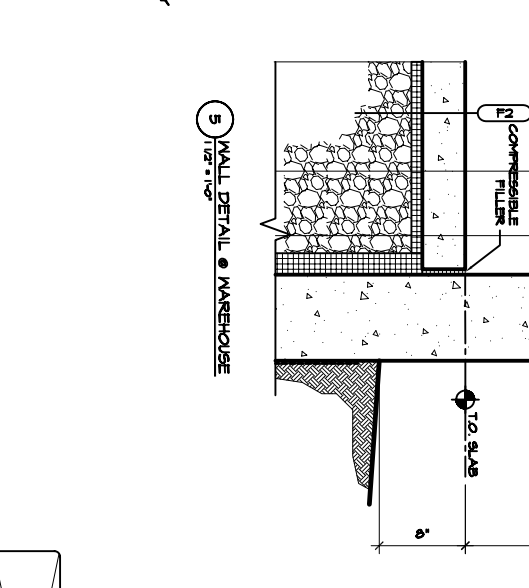
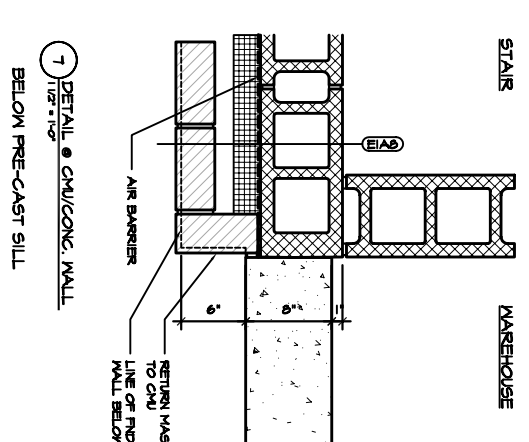
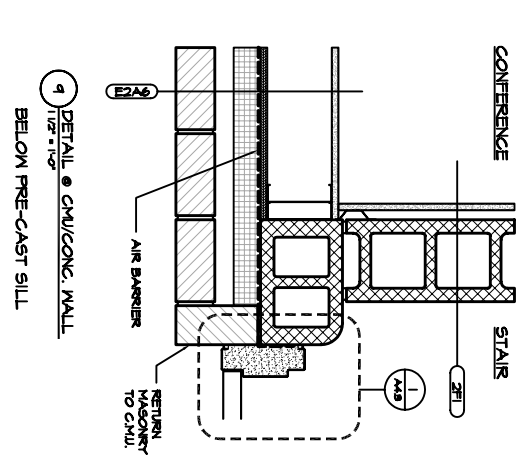
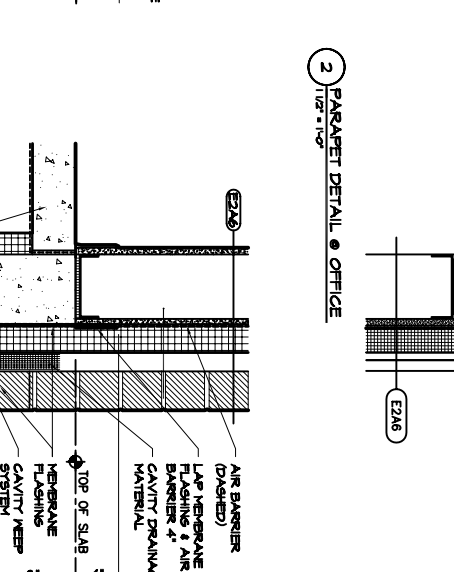
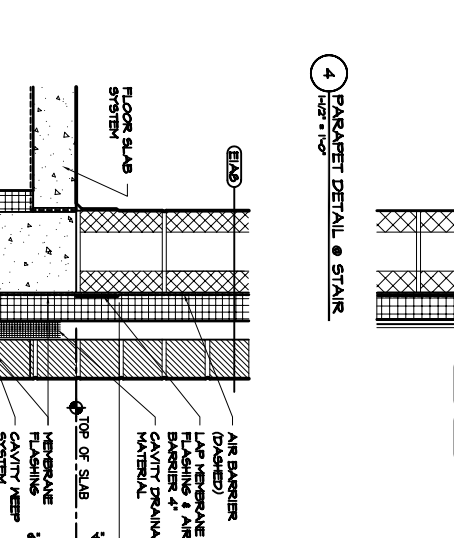
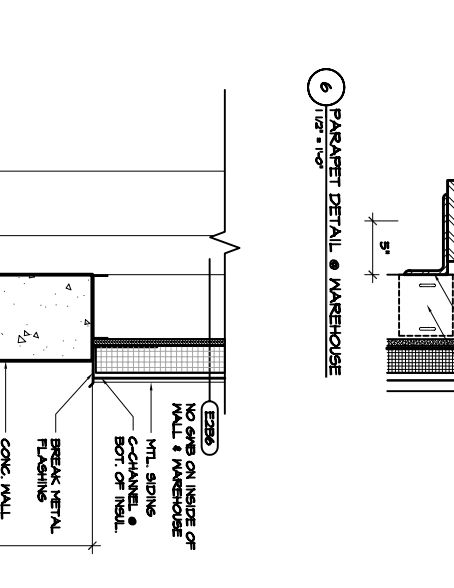
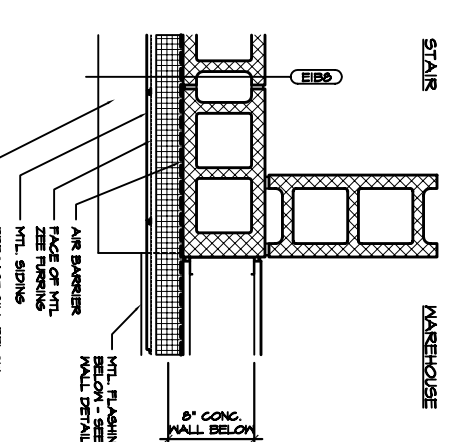
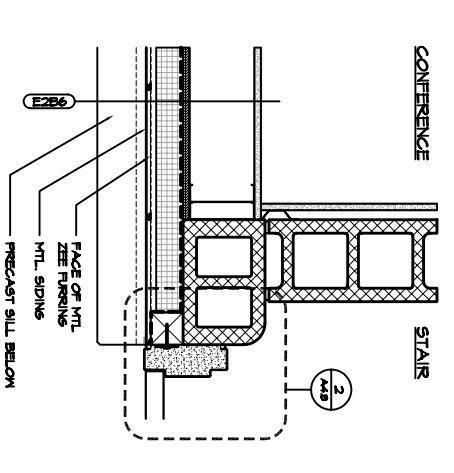
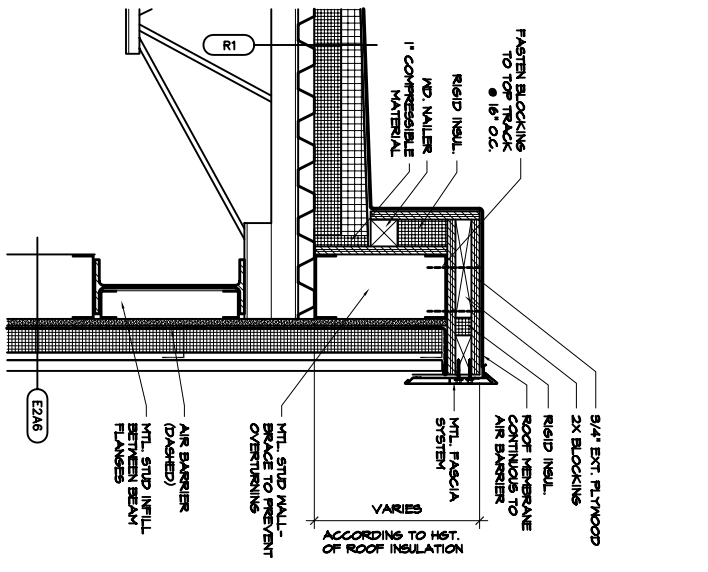
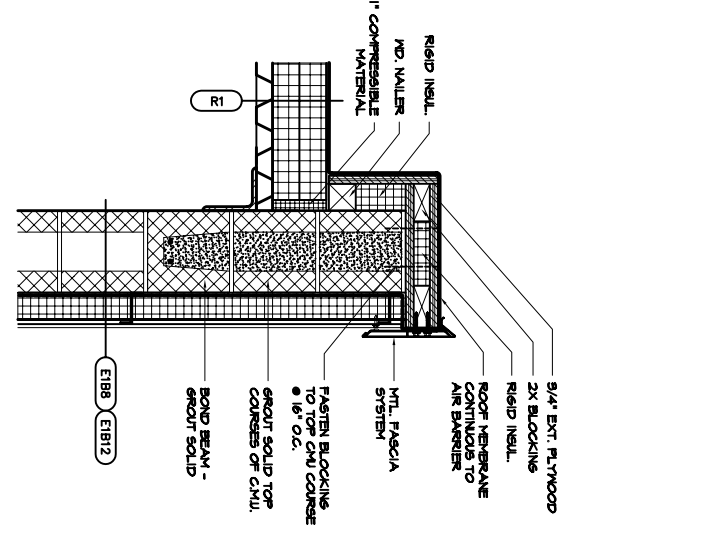
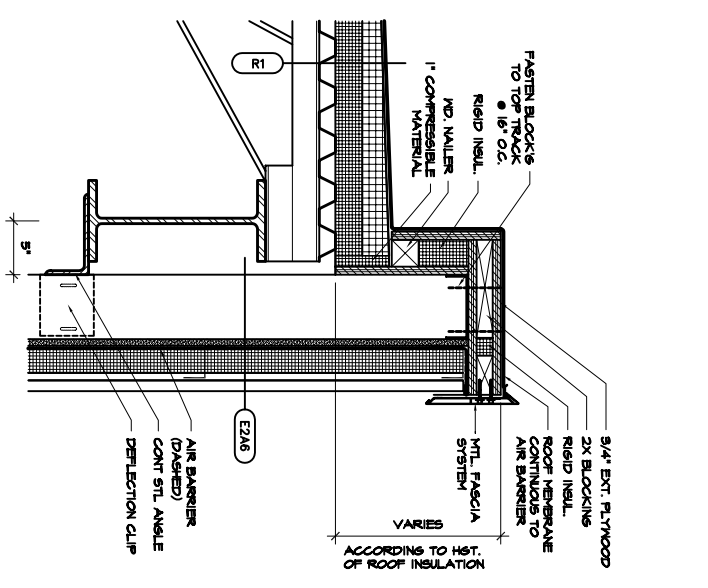
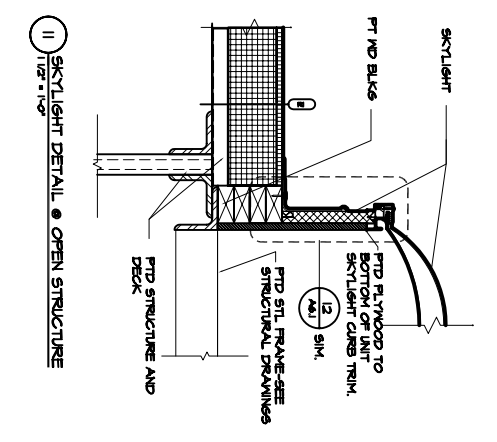
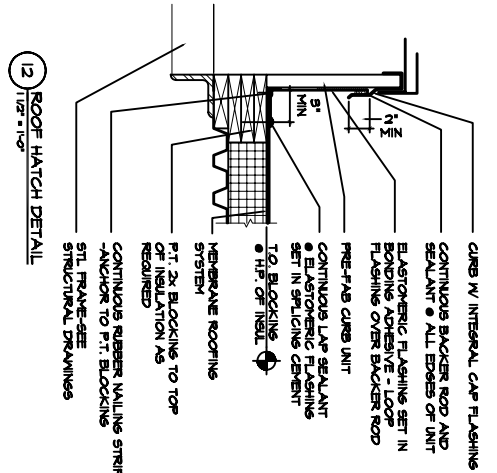


GUARDRAIL DETAILS

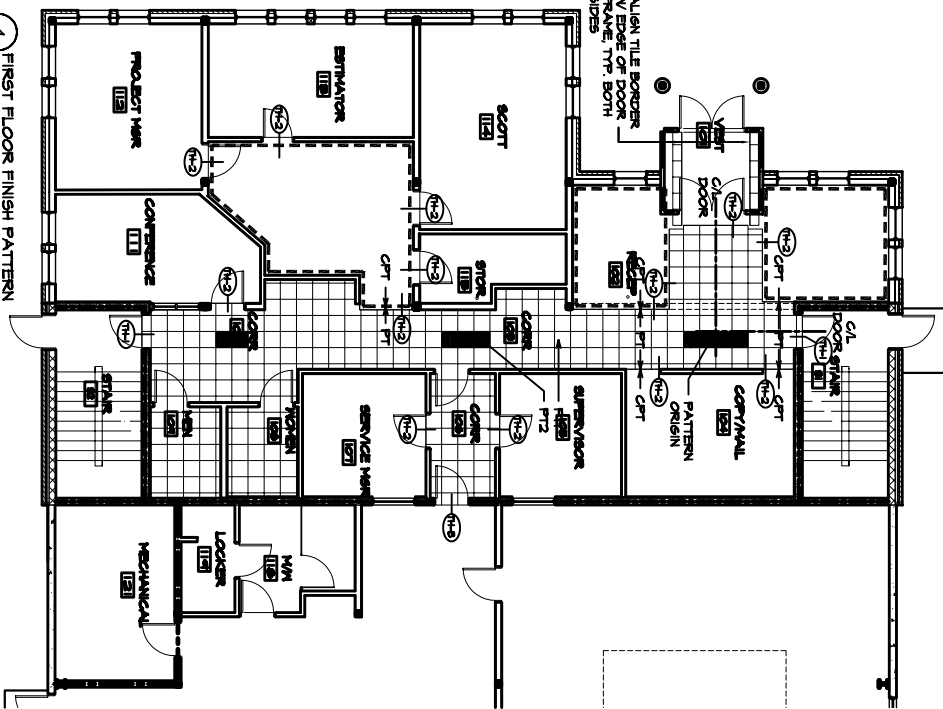
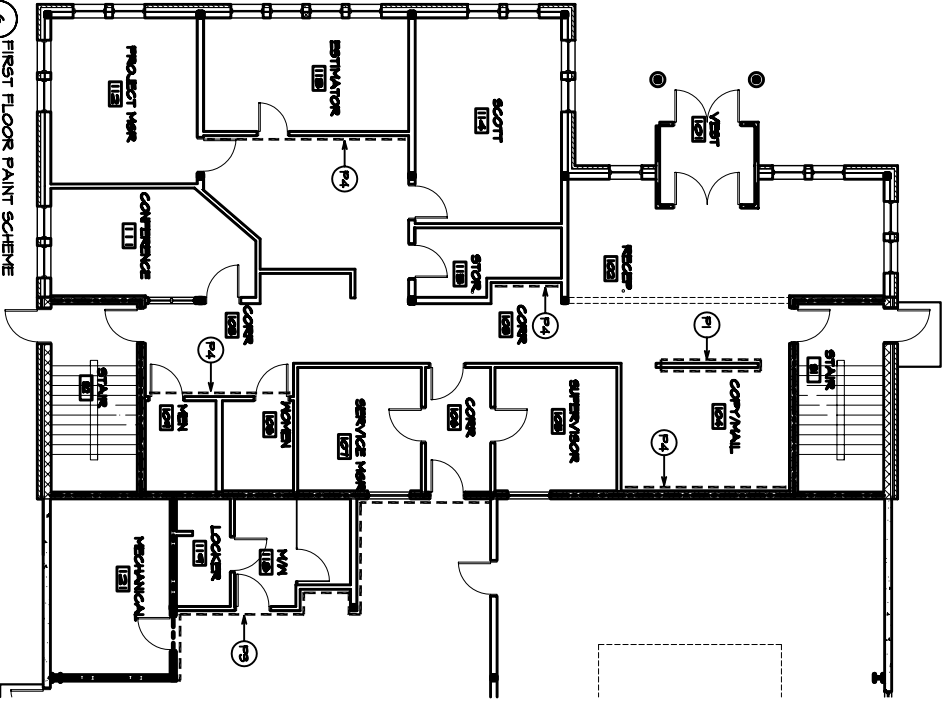
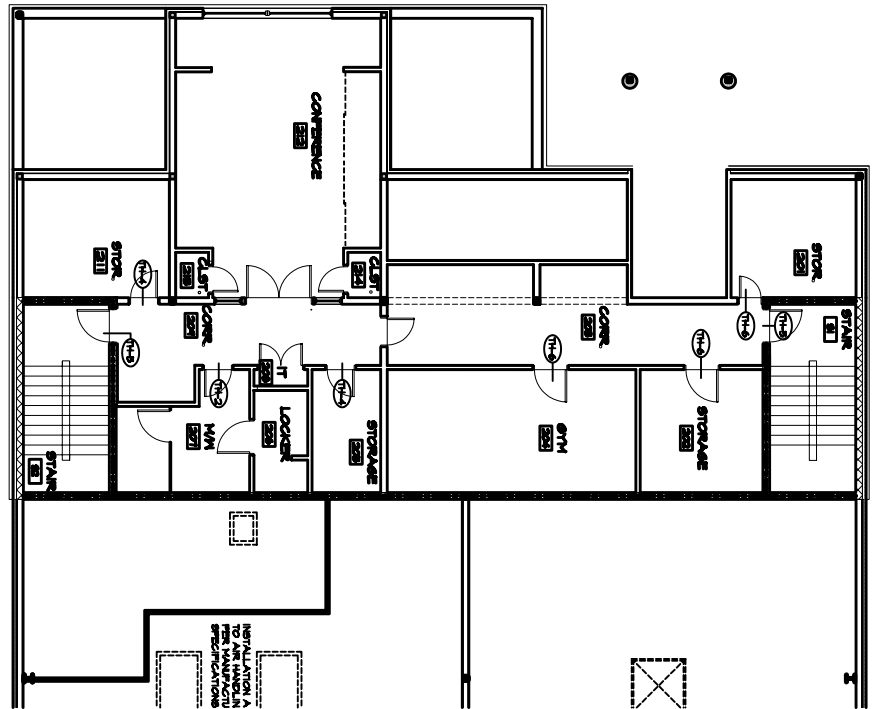
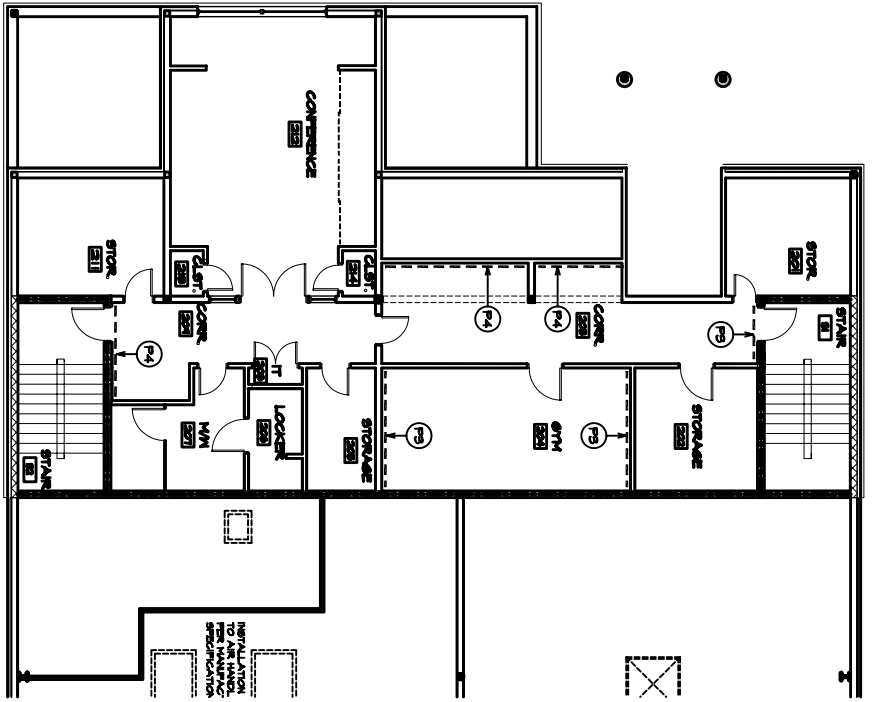


HANDRAIL DETAILS





<p>DELTA ROOFING PORTLAND, MAINE</p>		<p>ARCHITECTURE INTERIOR DESIGN PLANNING</p> <p>PDT ARCHITECTS</p> <p>40 DARTMOUTH STREET PORTLAND, ME 04101 207-775-1083 207-775-6904 FAX</p>	<p>COPYRIGHT 2006 PDT Architects All rights reserved. No part of this document may be reproduced without the written permission of PDT Architects.</p>	<p>ISSUE: PERMIT SET JUNE 23, 2006</p>	<p>SCALE: AS NOTED</p>	<p>DRAWN: CHIK EJA</p>	<p>JOB NO.: 06-136</p>	<p>TITLE: EXTERIOR DETAILS</p>	<p>SHEET: A6.1</p>
				<p>DATE: JUNE 23, 2006</p>	<p>SCALE: AS NOTED</p>	<p>DRAWN: CHIK EJA</p>	<p>JOB NO.: 06-136</p>	<p>TITLE: EXTERIOR DETAILS</p>	<p>SHEET: A6.1</p>



ROOM FINISH SCHEDULE

Number	ROOM NAME	FLOOR	BASE	WALLS				NOTES
				N	S	E	M	
51	STAIR	RUBBER	VBI	P-2	P-2	P-2	P-2	PAINTED HANDRAIL STRUNGERS, P-5
52	STAIR	RUBBER	VBI	P-2	P-2	P-2	P-2	PAINTED HANDRAIL STRUNGERS, P-5
101	VESTIBULE	WAT/PTI	ALUM	NUM.	NUM.	NUM.	NUM.	PAINTED TRUSSES, P-5
102	RECEPTION	PT/PT	VBI	P-2	P-2	P-2	P-2	PAINTED TRUSSES, P-5
103	CORRIDOR	PT/PT	VBI	P-2	P-2	P-2	P-2	PAINTED TRUSSES, P-5
104	CORRIDOR	PT/PT	VBI	P-2	P-2	P-2	P-2	PAINTED TRUSSES, P-5
105	SUPERVISOR	PT	VBI	P-2	P-2	P-2	P-2	PAINTED TRUSSES, P-5
106	CORRIDOR	PT	VBI	P-2	P-2	P-2	P-2	PAINTED TRUSSES, P-5
107	SERVICE MARK	PT	VBI	P-2	P-2	P-2	P-2	PAINTED TRUSSES, P-5
108	MECHANICAL	PT	VBI	P-2	P-2	P-2	P-2	PAINTED TRUSSES, P-5
109	NOT USED	PT	VBI	P-2	P-2	P-2	P-2	PAINTED TRUSSES, P-5
110	NOT USED	PT	VBI	P-2	P-2	P-2	P-2	PAINTED TRUSSES, P-5
111	CONFERENCE	PT	VBI	P-2	P-2	P-2	P-2	PAINTED TRUSSES, P-5
112	PROJECT MARK	PT	VBI	P-2	P-2	P-2	P-2	PAINTED TRUSSES, P-5
113	STAIR	PT	VBI	P-2	P-2	P-2	P-2	PAINTED TRUSSES, P-5
114	STAIR	PT	VBI	P-2	P-2	P-2	P-2	PAINTED TRUSSES, P-5
115	STAIR	PT	VBI	P-2	P-2	P-2	P-2	PAINTED TRUSSES, P-5
116	WAREHOUSE	CONC	VBI	P-2	P-2	P-2	P-2	PAINT 6MB AND CHU WALLS ONLY
117	WAREHOUSE	CONC	VBI	P-2	P-2	P-2	P-2	PAINT 6MB AND CHU WALLS ONLY
118	MECHANICAL	CONC	CB	P-4	P-4	P-4	P-4	PAINT 6MB AND CHU WALLS ONLY
119	MECHANICAL	CONC	CB	P-4	P-4	P-4	P-4	PAINT 6MB AND CHU WALLS ONLY
120	MECHANICAL	CONC	CB	P-4	P-4	P-4	P-4	PAINT 6MB AND CHU WALLS ONLY
201	STORAGE	CONC	VBI	P-2	P-2	P-2	P-2	PAINT ABOVE FIRE/SLASH SHOWER LINT
202	STORAGE	CONC	VBI	P-2	P-2	P-2	P-2	PAINT ABOVE FIRE/SLASH SHOWER LINT
203	STORAGE	CONC	VBI	P-2	P-2	P-2	P-2	PAINT ABOVE FIRE/SLASH SHOWER LINT
204	CORRIDOR	PT	VBI	P-2	P-2	P-2	P-2	PAINT ABOVE FIRE/SLASH SHOWER LINT
205	GYM	FOAM TILES	VBI	P-2	P-2	P-2	P-2	PAINT ABOVE FIRE/SLASH SHOWER LINT
206	STORAGE	PT	VBI	P-2	P-2	P-2	P-2	PAINT ABOVE FIRE/SLASH SHOWER LINT
207	LOCKER	CONC	CB	P-4	P-4	P-4	P-4	PAINT ABOVE FIRE/SLASH SHOWER LINT
208	MECHANICAL	CONC	CB	P-4	P-4	P-4	P-4	PAINT ABOVE FIRE/SLASH SHOWER LINT
209	MECHANICAL	CONC	CB	P-4	P-4	P-4	P-4	PAINT ABOVE FIRE/SLASH SHOWER LINT
210	MECHANICAL	CONC	CB	P-4	P-4	P-4	P-4	PAINT ABOVE FIRE/SLASH SHOWER LINT
211	STORAGE	CONC	VBI	P-2	P-2	P-2	P-2	PAINT ABOVE FIRE/SLASH SHOWER LINT
212	STORAGE	CONC	VBI	P-2	P-2	P-2	P-2	PAINT ABOVE FIRE/SLASH SHOWER LINT
213	STORAGE	CONC	VBI	P-2	P-2	P-2	P-2	PAINT ABOVE FIRE/SLASH SHOWER LINT
214	CLOSET	CONC	VBI	P-2	P-2	P-2	P-2	PAINT ABOVE FIRE/SLASH SHOWER LINT

- NOTES:
- SEE INTERIOR ELEVATIONS FOR ADDITIONAL FINISH/COLOR INFORMATION, GYM AND STORAGE ROOMS.
 - SEAL ALL CONCRETE FLOORS IN WAREHOUSE, MECHANICAL, GYM AND STORAGE ROOMS.

- FLOOR TILE KEY:
- PT1 - FIELD TILE
 - PT2 - ACCENT TILE

- THRESHOLD KEY:
- TH1 - RUBBER TO TILE
 - TH2 - CARPET/MAT TO TILE
 - TH3 - TILE TO CONCRETE
 - TH4 - CARPET TO VOT
 - TH5 - CARPET TO RUBBER
 - TH6 - CARPET TO CONCRETE

- PAINTING NOTES:
- UNLESS NOTED OTHERWISE (UNO), ALL WALLS TO BE PAINTED P2.
 - UNO, ALL HVN DOORS & FRAMES TO BE PAINTED P1.
 - UNO, ALL HANDRAILS TO BE PAINTED P1.
 - UNO, ALL HANDRAILS TO BE PAINTED P1.
 - ACCENT WALL, IMPLES CORNER TO CORNER FLOOR TO CEILING COMPLETE COVERAGE.
 - UNO, ALL HVN DOORS & FRAMES IN ACCENT WALLS TO BE PAINTED COLOR OF ACCENT WALL.