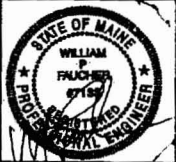


ISSUED FOR CONSTRUCTION

160 Veranda Street
 Portland, Maine 04103
 T: 207.231.2260
 F: 207.231.2266
 Web: www.allied-eng.com

Allied Engineering
 Structural Mechanical Electrical Commissioning



NO.	REVISION	DATE	BY	DESCRIPTION

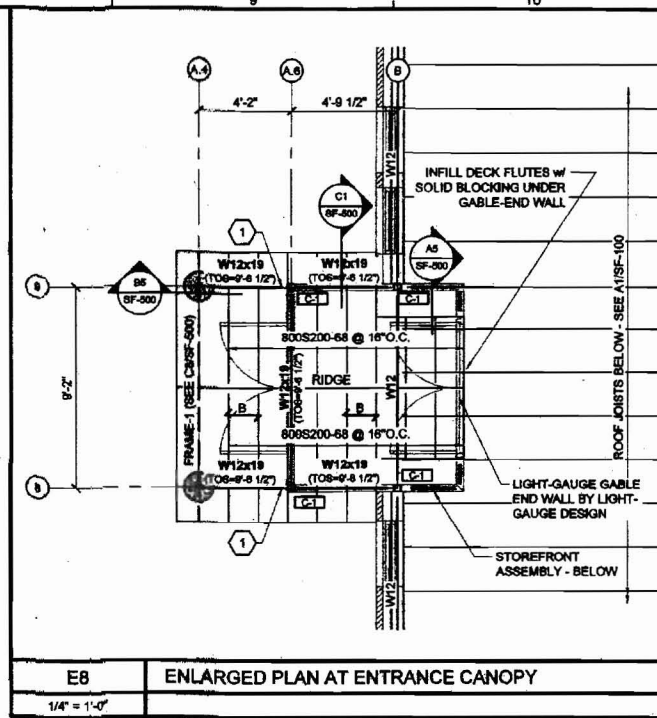
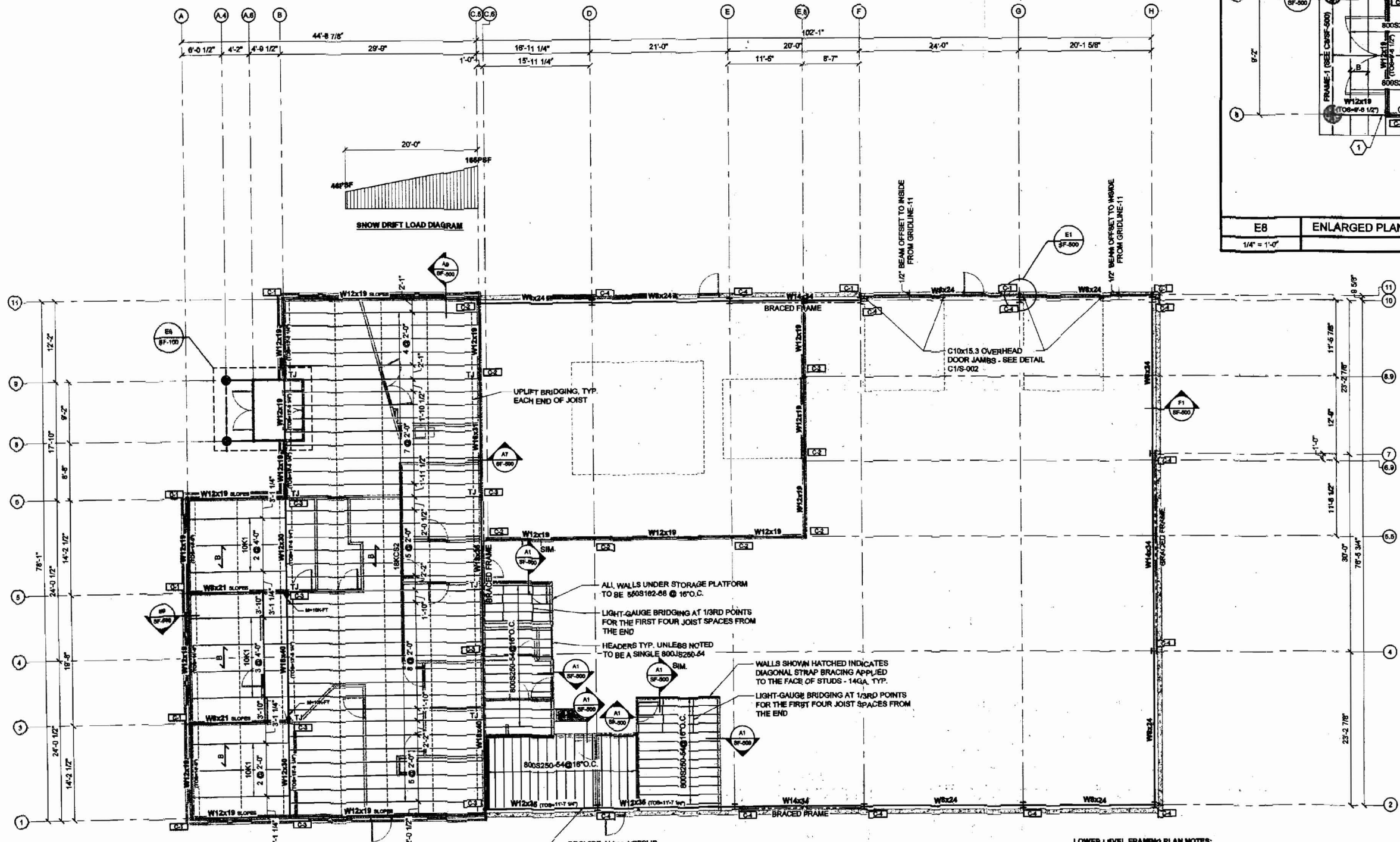
Date: 06/09/2008
 Drawn By: PED
 Checked By: WPF
 Project Mgr: WPF
 Project No: 08029
 Cont. File: 08029-003.dwg
 Graphic Scale: 1" = 1'-0"

FOUNDATION DETAILS
 DELTA ROOFING
 PORTLAND, MAINE

SB-500

I:\Projects\2008\08029 - Delta Roofing Warehouse - Office Bldg\0300 Drawing Files - current\08029\08029.dwg Aug 01, 2008 - 8:57am

N:\Projects\2006\08029 - Delta Roofing Warehouse - Office\Bldg00 Drawing Files - current CAD\Bldg002006.dwg Aug 08, 2006 - 8:17am



- LOWER LEVEL FRAMING PLAN NOTES:**
1. TOP OF STEEL ELEVATION = 13'-0 3/4" UNLESS NOTED (TOS)
 2. ALL BEAM TO BEAM CONNECTIONS TO BE DONE WITH A SINGLE PLATE CONNECTION, 3/8" THICK.
- ← B → INDICATES SPAN OF 1 1/2" B-DECK - SEE SPECS.
 - - - INDICATES TOP AND BOTTOM CHORD JOIST BRIDGING, UNLESS NOTED.
 (1) PROVIDE 1/4" NEOPRENE SPACER BETWEEN BEAM WEB AND SHEAR TAB.

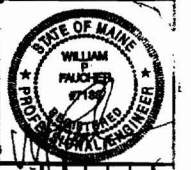
ISSUED FOR CONSTRUCTION

A1 LOWER LEVEL FRAMING PLAN
1/8" = 1'-0"

160 Veranda Street
 Portland, Maine 04103
 T: 207.221.7268
 F: 207.221.7266
 Web: www.allied-eng.com

Allied Engineering

Structural Mechanical Electrical Commissioning



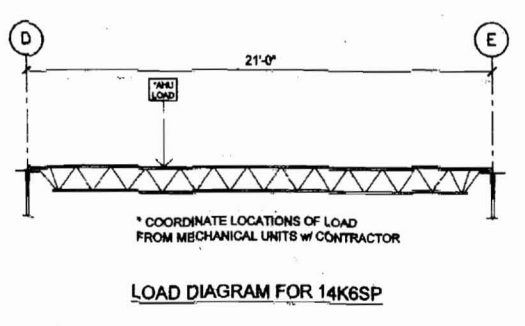
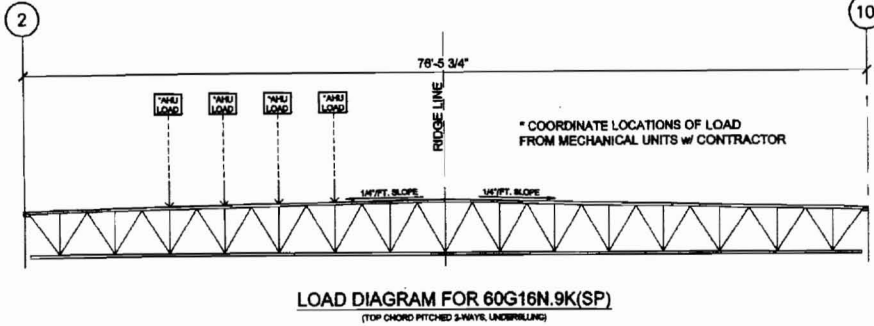
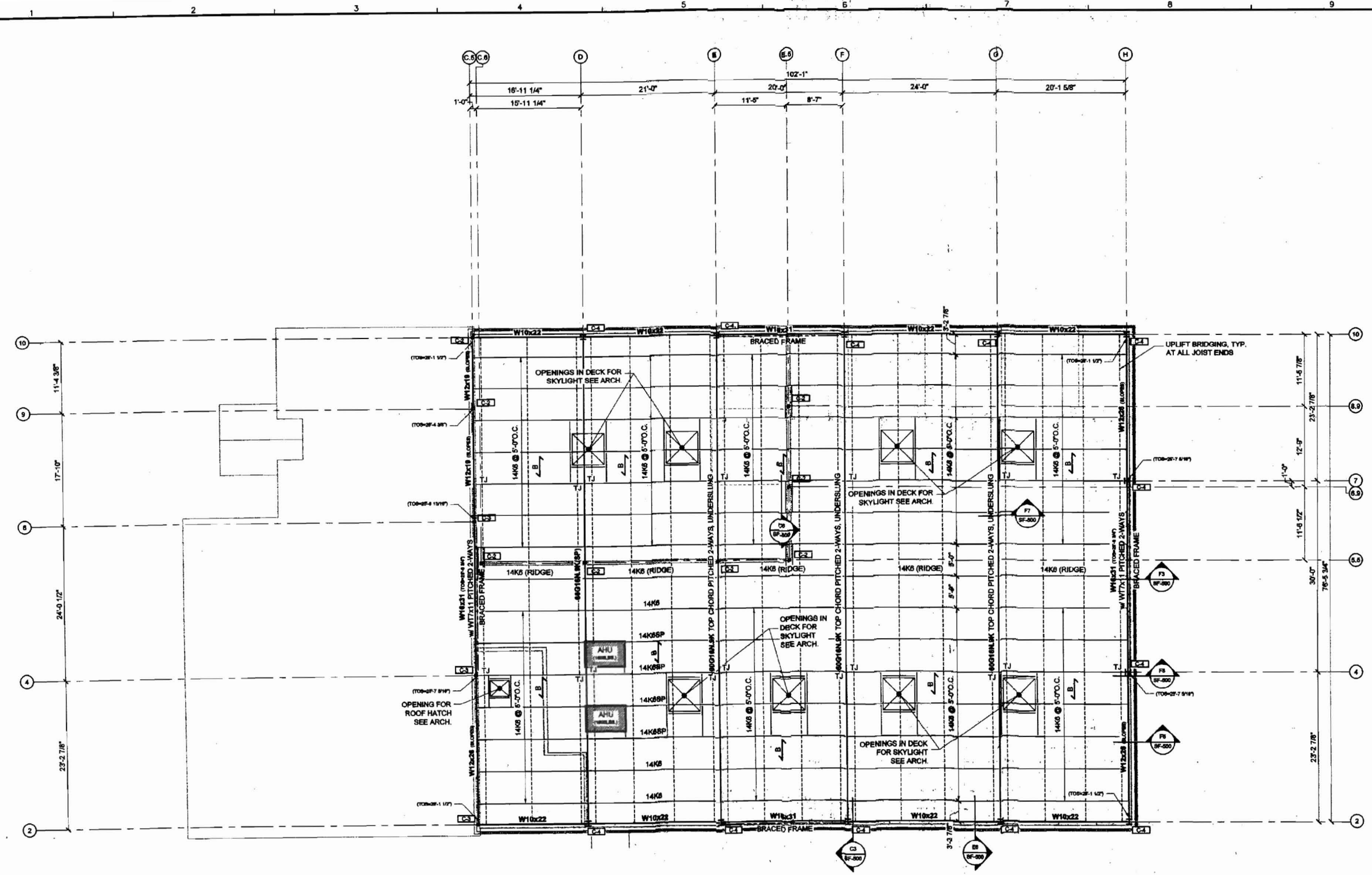
REVISIONS	NUMBER	DATE	BY	DESCRIPTION

Date: 08/09/2006
 Drawn By: PED
 Checked By: WFF
 Project Mgr: WFF
 Project No: 06029
 Cad File: 06029S.dwg

SECOND FLOOR AND LOW ROOF FRAMING PLAN
 DELTA ROOFING
 PORTLAND, MAINE

SF-100

K:\Projects\2008\06029 - Delta Roofing Warehouse - Office\Bldg\000 Drawing Files -current\04 Rfract000202.rvt Aug 08, 2008 - 01:08am



- ROOF FRAMING PLAN NOTES:
- TOP OF STEEL ELEVATION = 28'-4" UNLESS NOTED (TOS)
 - ALL BEAM TO BEAM CONNECTIONS TO BE DONE WITH A SINGLE PLATE CONNECTION, 3/8" THICK.
- Δ — INDICATES SPAN OF 1 1/2" B-DECK - SEE SPECS.
- INDICATES TOP AND BOTTOM CHORD JOIST BRIDGING, UNLESS NOTED.

**ISSUED FOR
CONSTRUCTION**

A1	HIGH ROOF FRAMING PLAN
1/8" = 1'-0"	

HIGH ROOF FRAMING PLAN

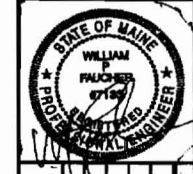
DELTA ROOFING
PORTLAND, MAINE

SF-101

REVISIONS

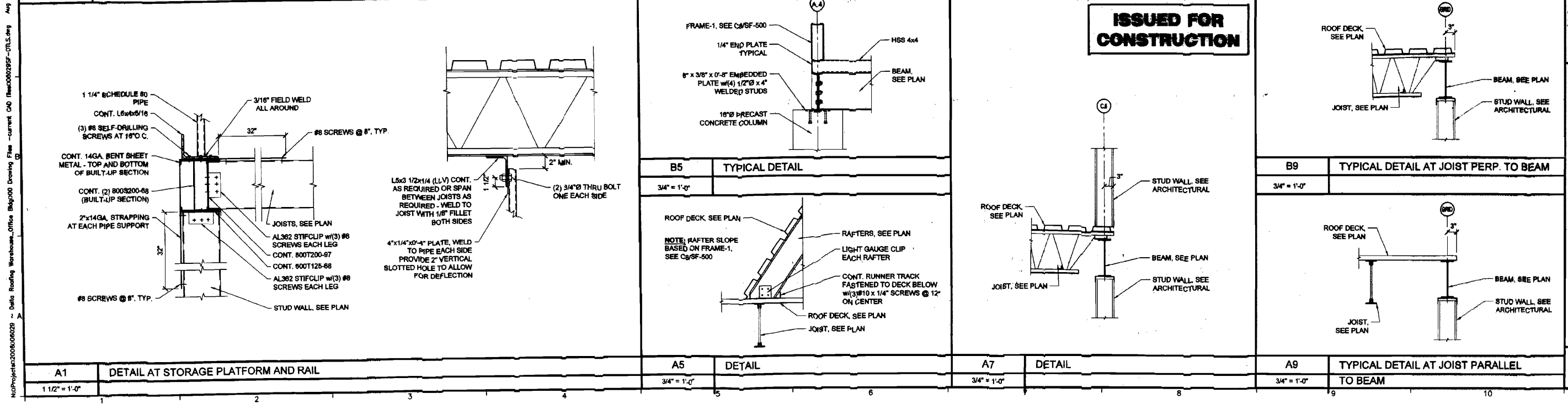
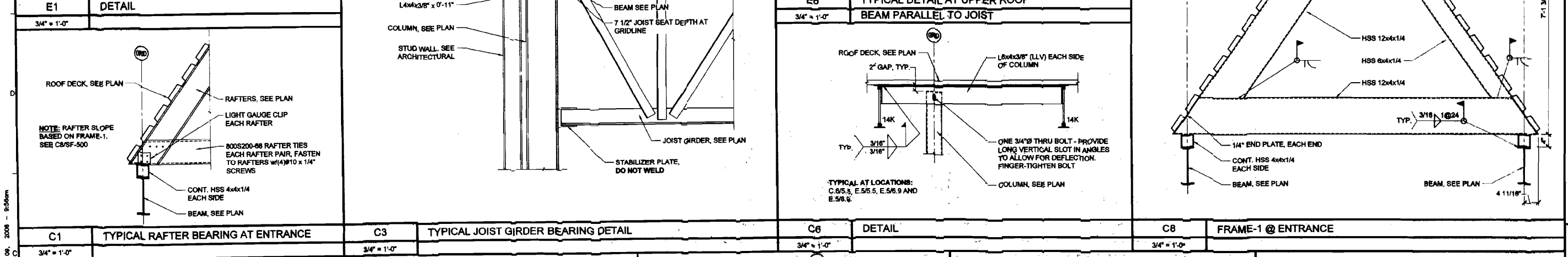
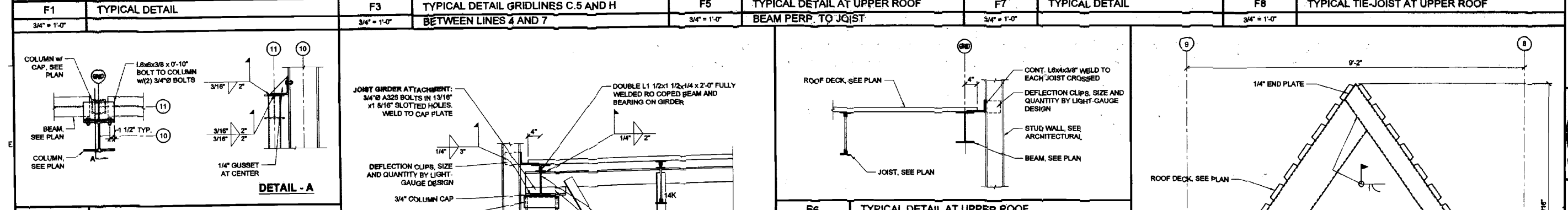
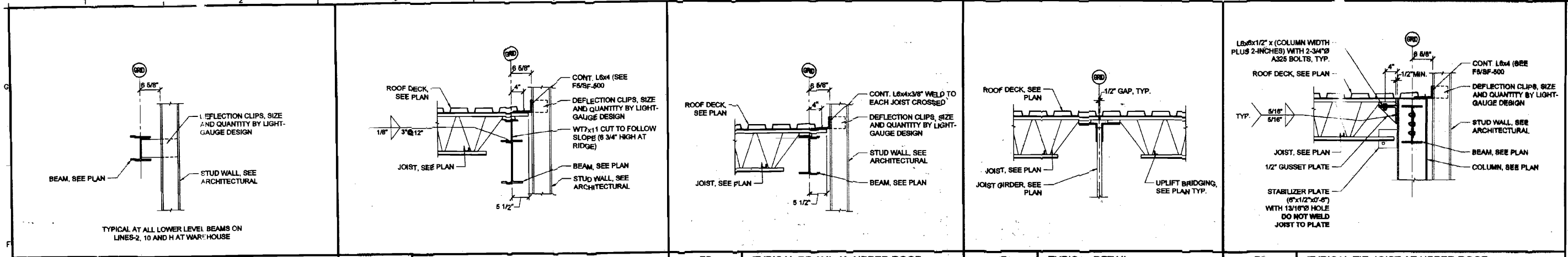
NUMBER	DATE	BY	DESCRIPTION

Date: 06/09/2008
Drawn By: PFD
Checked By: WFF
Project Mgr: WFF
Coord. File: 060202.rvt
Graphic: 0
Scale: 1"



Allied Engineering
Structural Mechanical Electrical Commissioning

160 Veranda Street
Portland, Maine 04103
T: 207.221.2260
F: 207.221.2266
Web: www.allied-eng.com



Date: 09/09/2008
 Drawn By: PFD
 Checked By: WFF
 Project Mgr: WFF
 Project No: 08029
 Cont. File: 08029-01.5.dwg
 Graphic: 0
 Scale: 1/8" = 1'-0"
 Date: 09/09/2008
 Drawn By: PFD
 Checked By: WFF
 Project Mgr: WFF
 Project No: 08029
 Cont. File: 08029-01.5.dwg
 Graphic: 0
 Scale: 1/8" = 1'-0"
 Delta Roofing Warehouse, Office: 800-200-8000
 Drawing File: current CAD file: 08029-01.5.dwg
 Aug 09, 2008 - 9:56am

166 Veranda Street
Portland, Maine 04103
T: 207.221.2260
F: 207.221.2266
Web: www.allied-eng.com

Allied Engineering
Structural Mechanical Electrical Commissioning

STATE OF MAINE
WILLIAM H. HUBBARD
REGISTERED PROFESSIONAL ENGINEER
NO. 10187

REVISIONS

DATE
DESCRIPTION

DATE: 09/09/2008
DRAWN BY: PFD
CHECKED BY: WFF
PROJECT MGR: WFF
PROJECT NO: 08029
CONT. FILE: 08029-01.5.dwg
GRAPHIC: 0
SCALE: 1/8" = 1'-0"

STRUCTURAL DETAILS
DELTA ROOFING
PORTLAND, MAINE

SF-500