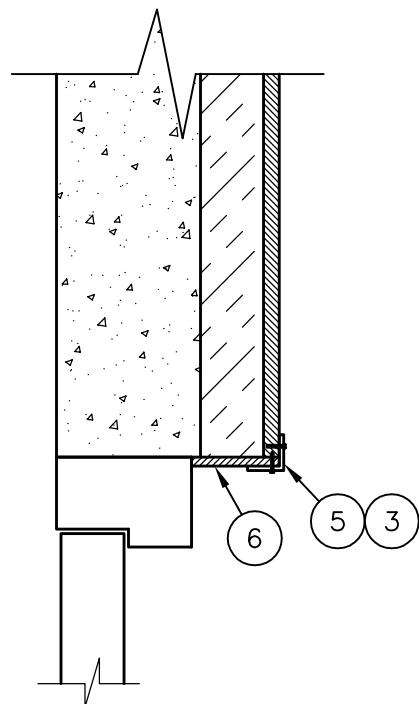


WALL/ROOF SECTION

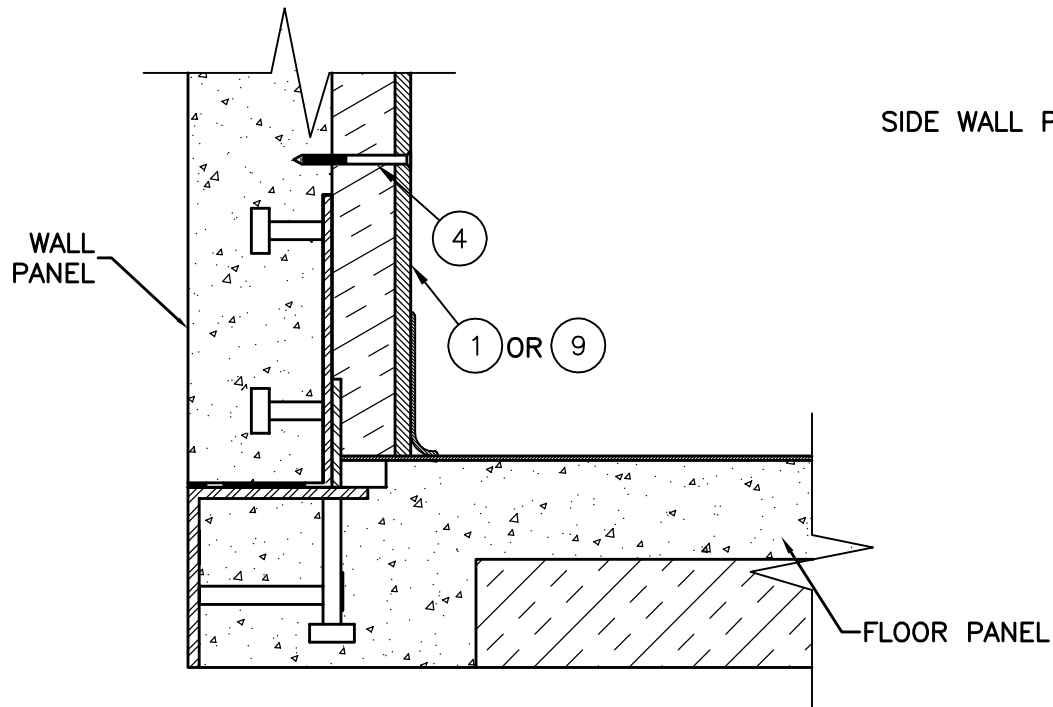


TYP DOOR SECTION TRIM DETAIL

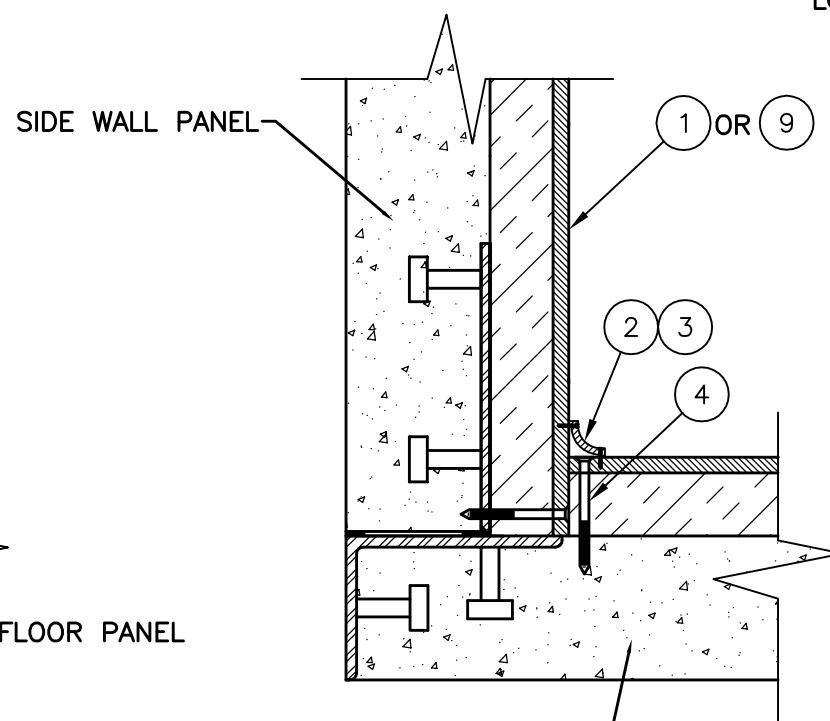
| Parts List |     |        |                                     |
|------------|-----|--------|-------------------------------------|
| ITEM       | U/M | P/N    | DESCRIPTION                         |
| 1          | EA. | 300033 | INSULATION,2.25"RMAX TSX,48"X144"   |
| 2          | EA. | 320002 | TRIM,COVE,VINYL,10'0",WHITE         |
| 3          | EA. | 168009 | BRAD,WHITE 3/4",44241               |
| 4          | EA. | 168294 | SCREW,CONCRETE,3/16"X3 3/4"         |
| 5          | EA. | 320020 | TRIM,CORNER,WOOD,1-3/8"X1-3/8"OUTSI |
| 6          | EA. | 300028 | PANELING,POLY.030,W/3/8"OSB,4'X9'1" |
| 7          | EA. | 320023 | TRIM,FRP,VINYL,10'0",WHITE,2 PCS,2" |
| 8          | EA. | 320024 | TRIM,FRP,VINYL,12'0",WHITE,2 PCS,2" |
| 9          | EA. | 300036 | INSULATION,2.25"RMAX TSX,48"X113"   |

NOTES:

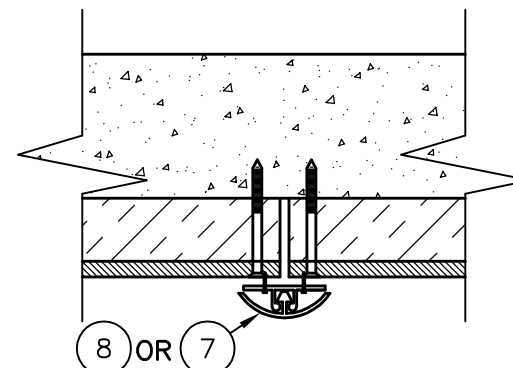
1. INSTALL INTERIOR PANELS W/ TAPCONS (LENGTH MAY VARY) 24" O.C. MAX ALONG LENGTH OF PANELS. (NO FASTENERS REQUIRED ALONG SHORT SIDE OF PANELS IF PANEL EDGE IS AT A CORNER)
2. MAX GAP BETWEEN PANELS TO BE 1/4"
3. USE COVE TRIM IN ALL CORNERS AND AROUND TOP PERIMETER. INSTALL USING 3/4" BRAD NAILS.
4. TRIM ALL EXPOSED OPENINGS W/ OUTSIDE CORNER TRIM.
5. USE 10 FT TRIM, P/N 320023 FOR JOINT LENGTHS 10FT AND UNDER, USE P/N 320024 FOR JOINT LENGTHS OVER 10FT.
6. USE 12FT PANELS FOR WALLS AND CEILING ON SURFACES LONGER THAN 113".



WALL/FLOOR SECTION



END WALL PANEL WALL/WALL SECTION



JOINT DETAIL PLAN VIEW SECTION

| REV | BY | DATE     | DESCRIPTION                       | APP. | DATE     |
|-----|----|----------|-----------------------------------|------|----------|
| D   | CC | 5/4/06   | REV SHT 2                         | KB   | 5/4/06   |
| C   | CC | 3/27/06  | ADDED NOTE #6                     | KB   | 3/27/06  |
| B   | CC | 3/16/06  | REVISED SHT 2                     | KB   | 3/16/06  |
| A   | CC | 10/11/05 | CHG TITLE TO BE 9'-9" WALL HEIGHT | VGH  | 10/11/05 |

THIS DRAWING IS THE CONFIDENTIAL PROPERTY AND CONTAINS TRADE SECRETS OF CELLXION, LLC. ANY USE OF THESE DRAWINGS OR THE INFORMATION CONTAINED HEREIN FOR ANY REASON OTHER THAN AS EXPRESSLY AUTHORIZED BY CELLXION, LLC. IS STRICTLY PROHIBITED. THIS DRAWING HAS BEEN DISTRIBUTED WITH THE UNDERSTANDING THAT ANYONE RECEIVING OR OTHERWISE OBTAINING POSSESSION OF IT WILL BE EXPRESSLY NOTIFIED OF ITS CONFIDENTIAL NATURE.

**Cellxion**  
 A Division of Sabre Industries, Inc.  
 5031 Hazel Jones Road  
 Bossier City, Louisiana 71111  
 voice: (318) 213-2900  
 fax: (318) 213-2919  
 www.cellxion.com

CUSTOMER:  
 ENGINEERING STANDARD

PROJECT:  
 CONCRETE SHELTER  
 INT. PANELING INSTALL  
 (1) LAYER  
 WALL HEIGHT 9'-9"

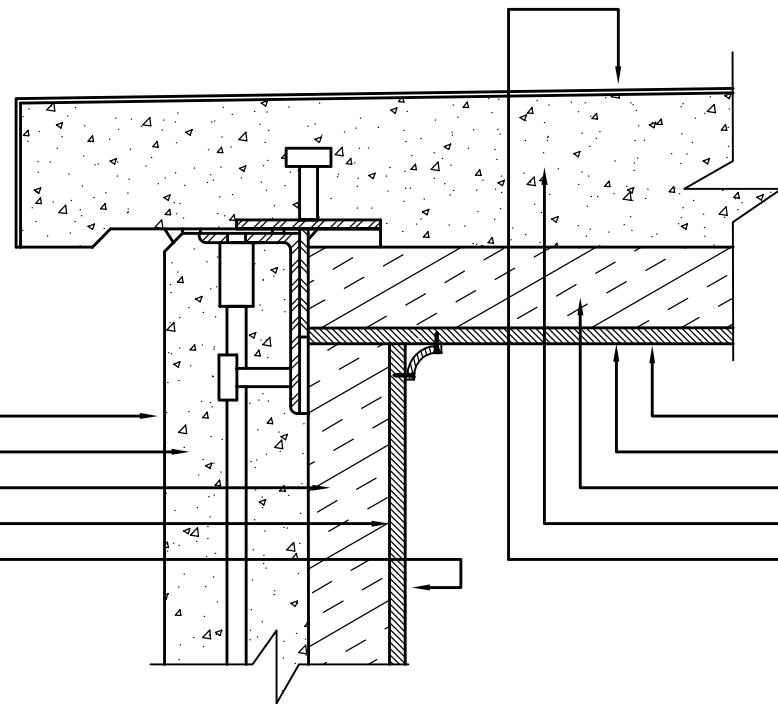
|                          |                  |
|--------------------------|------------------|
| FILENAME:<br>108-036     | TOLERANCE:       |
| SCALE:<br>3/16"=1"       | DATE:            |
| DRWN. BY:<br>C. CASINGER | DATE:<br>10/6/05 |
| CHK. BY:<br>V. HASSELL   | DATE:<br>10/6/05 |
| ENG. BY:<br>K. BARNETT   | DATE:<br>10/6/05 |
| APP. BY:                 | DATE:            |

SHEET NO.  
 1 OF 2  
 DRAWING NO.:  
 108-036

D

**WALL**  
(HEAT CAPACITY = 8 BTU/\*F)

|       |                    |
|-------|--------------------|
| 0.25  | OUTSIDE AIR FILM   |
| 1.36  | 4" L.W. CONCRETE   |
| 14.40 | 2 1/4" R-MAX INSUL |
| 0.54  | 7/16" PANELING     |
| 1.70  | INSIDE AIR FILM    |
| <hr/> |                    |
| 18.25 | OVERALL R-VALUE    |
| 0.055 | OVERALL U-FACTOR   |

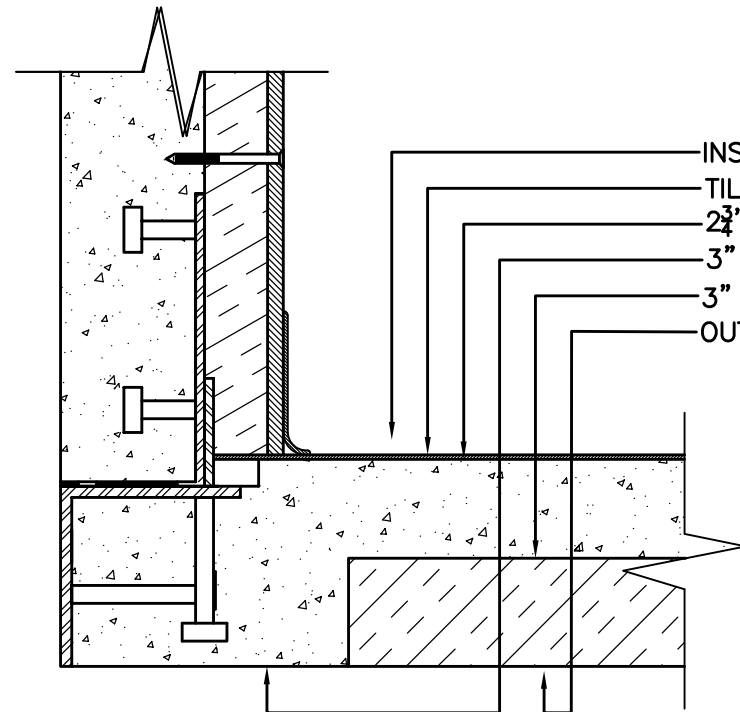


**CEILING**

|       |                         |
|-------|-------------------------|
| 4.55  | INSIDE AIR FILM         |
| 0.54  | 7/16" PANELING          |
| 14.40 | 2 1/4" R-MAX INSUL.     |
| 1.53  | 4.5"(AVG) L.W. CONCRETE |
| 0.25  | OUTSIDE AIR FILM        |
| <hr/> |                         |
| 21.27 | OVERALL R-VALUE         |
| 0.047 | OVERALL U-FACTOR        |

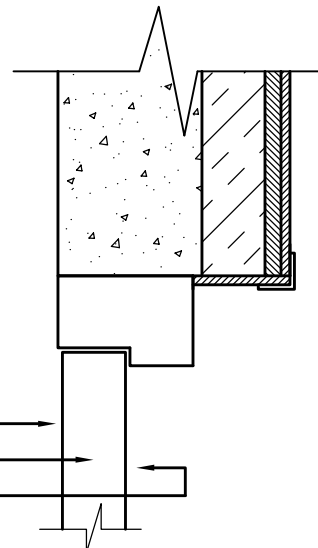
**FLOOR**

|       | RIB              | DECK  |                             |
|-------|------------------|-------|-----------------------------|
|       | 1.10             | 1.10  | INSIDE AIR FILM             |
|       | 0.05             | 0.05  | TILE                        |
|       | 0.94             | 0.94  | 2 3/4" L.W. CONCRETE (DECK) |
|       | 1.02             | --    | 3" L.W. CONCRETE (RIB)      |
|       | --               | 15.00 | 3" FOAM INSERT              |
|       | 0.25             | 0.25  | OUTSIDE AIR FILM            |
| <hr/> |                  |       |                             |
| 3.36  | 17.34            |       | TOTAL 'R'                   |
| 0.298 | 0.058            |       | TOTAL 'U'                   |
| 0.286 | 0.714            |       | SURFACE AREA RATIO          |
| 0.085 | 0.041            |       | U-FACTOR PER SURFACE AREA   |
| <hr/> |                  |       |                             |
| 0.126 | OVERALL U-FACTOR |       |                             |
| 7.93  | OVERALL R-VALUE  |       |                             |



**METAL DOOR**

|       |                   |
|-------|-------------------|
| 0.25  | OUTSIDE AIR FILM  |
| 7.00  | BEAD BOARD INSUL. |
| 1.35  | INSIDE AIR FILM   |
| <hr/> |                   |
| 8.60  | OVERALL R-VALUE   |
| 0.116 | OVERALL U-FACTOR  |



THIS DRAWING IS THE CONFIDENTIAL PROPERTY AND CONTAINS TRADE SECRETS OF CELLXION, LLC. ANY USE OF THESE DRAWINGS OR THE INFORMATION CONTAINED HEREIN FOR ANY REASON OTHER THAN AS EXPRESSLY AUTHORIZED BY CELLXION, LLC. IS STRICTLY PROHIBITED. THIS DRAWING HAS BEEN DISTRIBUTED WITH THE UNDERSTANDING THAT ANYONE RECEIVING OR OTHERWISE OBTAINING POSSESSION OF IT WILL BE EXPRESSLY NOTIFIED OF ITS CONFIDENTIAL NATURE.

**Cellxion**  
A Division of Sabre Industries, Inc.  
5031 Hazel Jones Road  
Bossier City, Louisiana 71111  
voice: (318) 213-2900  
fax: (318) 213-2919  
www.cellxion.com

CUSTOMER:  
**ENGINEERING STANDARD**

PROJECT:  
**CONCRETE SHELTER  
INT. PANELING INSTALL  
(1) LAYER  
R/U CALCULATIONS**

|                          |                  |
|--------------------------|------------------|
| FILENAME:<br>108-036     |                  |
| SCALE:                   | TOLERANCE:       |
| DRWN. BY:<br>C. CASINGER | DATE:<br>10/6/05 |
| CHK. BY:<br>V. HASSELL   | DATE:<br>10/6/05 |
| ENG. BY:<br>K. BARNETT   | DATE:<br>10/6/05 |
| APP. BY:                 | DATE:            |

SHEET NO.  
**2 OF 2**

DRAWING NO.:  
**108-036**

|     |    |         |                     |         |         |
|-----|----|---------|---------------------|---------|---------|
| D   | CC | 5/4/06  | REVISED FLOOR CALCS | KB      | 5/4/06  |
| B   | CC | 3/16/06 | REVISED FLOOR CALCS | KB      | 3/16/06 |
| REV | BY | DATE    | DESCRIPTION         | APP. BY | DATE    |

**D**