

PRIOR TO CONSTRUCTION CONTRACTOR SHALL CONFIRM SECTOR FRAME FITMENT OF ATTACHMENT POINTS ON TOWER LEG.

(E) VERIZON ICE BRIDGE W/(18) 1 1/8" COAXIAL & (1) HYBRID CABLE. REMOVE (1) 1 1/8" COAXIAL CABLE CONFIRM W/STRUCTURAL ANALYSIS (BY OTHERS) & CONSTRUCTION MANAGER PRIOR TO CONSTRUCTION.

400'± L.F. (P) (1) 6x12 HYBRID CABLE ACROSS (E) ICE BRIDGE & UP GUYED TOWER W/SNAP-INS IN ACCORDANCE W/STRUCTURAL ANALYSIS (BY OTHERS). (P) HYBRID SLACK BOX ON ICE BRIDGE (AS REQ'D).

PRIOR TO CONSTRUCTION APPLICANT TO ENGAGE TOWER OWNER TO PERFORM GLOBAL STRUCTURAL ANALYSIS ON TOWER TO CONFIRM CAPACITY.

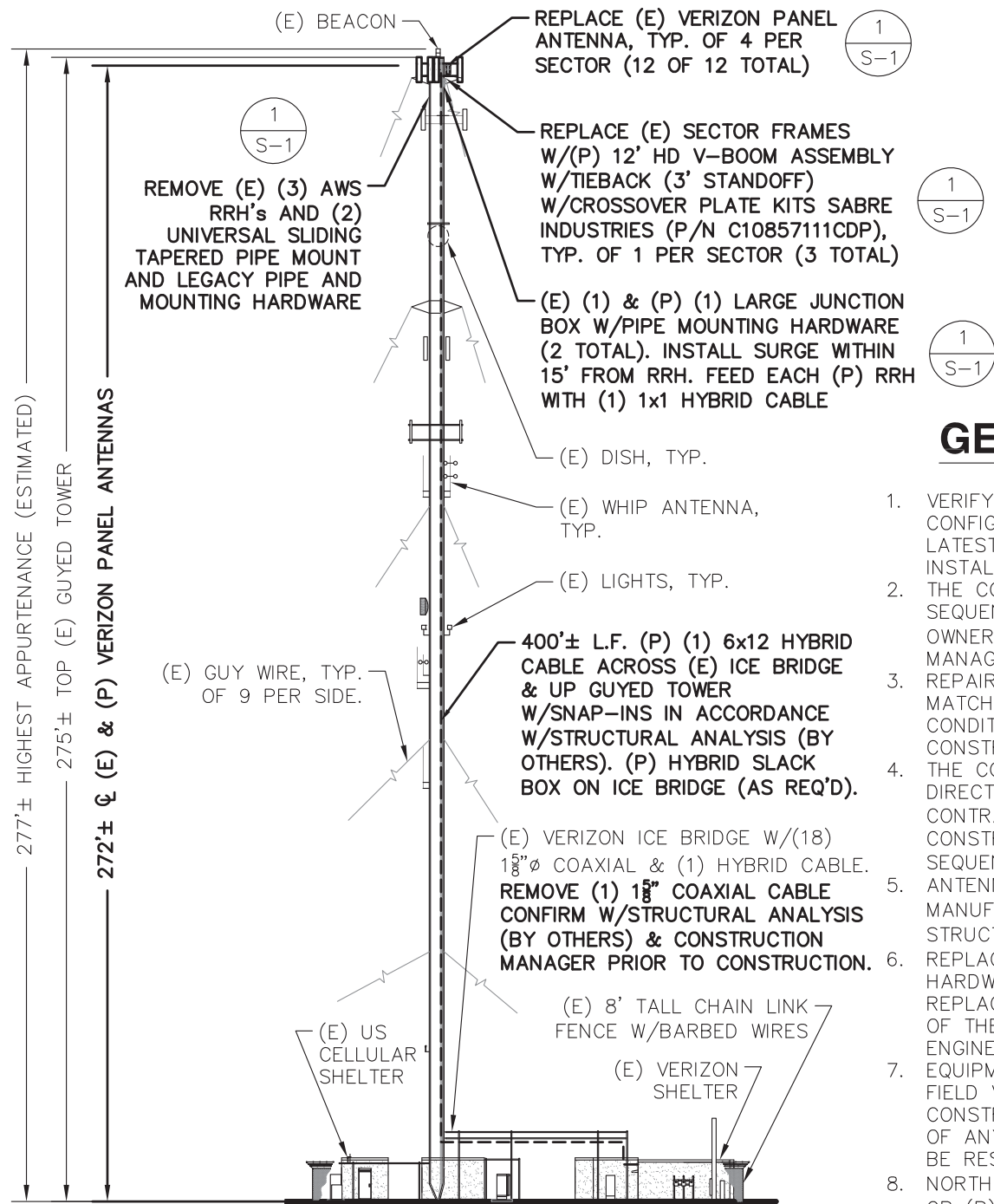


**COMPOUND PLAN**

SCALE: 1"=20' (11x17)



1  
A-1

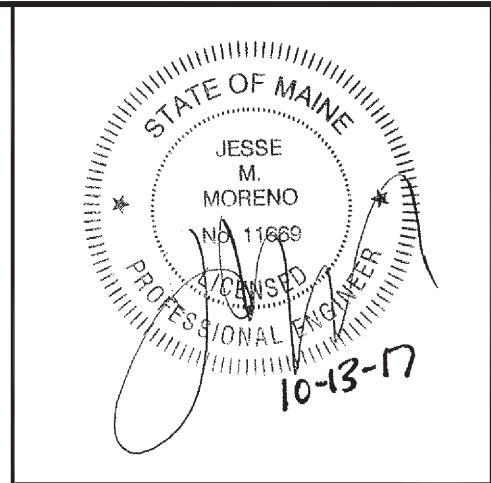


**SOUTHEAST ELEVATION**

SCALE: 1"=40' (11x17)



2  
A-1



**GENERAL NOTES**

1. VERIFY COAX CONFIGURATION, ANTENNA CONFIGURATION, AND ANTENNA HEIGHT WITH LATEST RF DATA SHEET PRIOR TO INSTALLATION.
2. THE CONTRACTOR SHALL SCHEDULE AND SEQUENCE ALL REQUIRED WORK WITH THE OWNER'S REPRESENTATIVE AND CONSTRUCTION MANAGER.
3. REPAIR ANY DAMAGE DURING CONSTRUCTION TO MATCH EXISTING PRE-CONSTRUCTION CONDITIONS TO THE SATISFACTION OF THE CONSTRUCTION MANAGER
4. THE CONTRACTOR SHALL SUPERVISE AND DIRECT THE PROJECT DESCRIBED HEREIN. THE CONTRACTOR SHALL BE RESPONSIBLE FOR ALL CONSTRUCTION MEANS, METHODS, TECHNIQUES, SEQUENCES AND PROCEDURES FOR THE WORK.
5. ANTENNAS & EQUIPMENT TO BE INSTALLED PER MANUFACTURER'S RECOMMENDATIONS & GLOBAL STRUCTURAL ANALYSIS OF TOWER (BY OTHERS)
6. REPLACE AND/OR REUSE (E) MOUNTING HARDWARE, INSPECT FOR DAMAGE, AND REPLACE AS NECESSARY TO THE SATISFACTION OF THE CONSTRUCTION MANAGER AND ENGINEER.
7. EQUIPMENT LOCATIONS AND CONDITIONS TO BE FIELD VERIFIED PRIOR TO COMMENCEMENT OF CONSTRUCTION. ENGINEER SHALL BE NOTIFIED OF ANY DISCREPANCIES OR CONTRACTOR SHALL BE RESPONSIBLE FOR THE SAME.
8. NORTH SHOWN IS APPROXIMATE. NOT ALL (E) OR (P) IMPROVEMENTS ARE SHOWN FOR CLARITY.
9. MATCH EXISTING ANTENNA TIP ELEVATIONS AS ZONING OR FAA APPROVALS DICTATE.
10. PROTERRA HAS NOT BEEN CONTRACTED TO PERFORM A GLOBAL STRUCTURAL ANALYSIS AND/OR AN ASSESSMENT OF THE TOWER STRUCTURE AND THEREFORE ASSUMES NO RESPONSIBILITY FOR THE STRUCTURAL CAPACITY OR MODIFICATIONS REQUIRED AS A RESULT THEREIN.

**ProTerra**  
DESIGN GROUP, LLC

4 Bay Road  
Building A, Suite 200  
Hadley, MA 01035 (413)320-4918

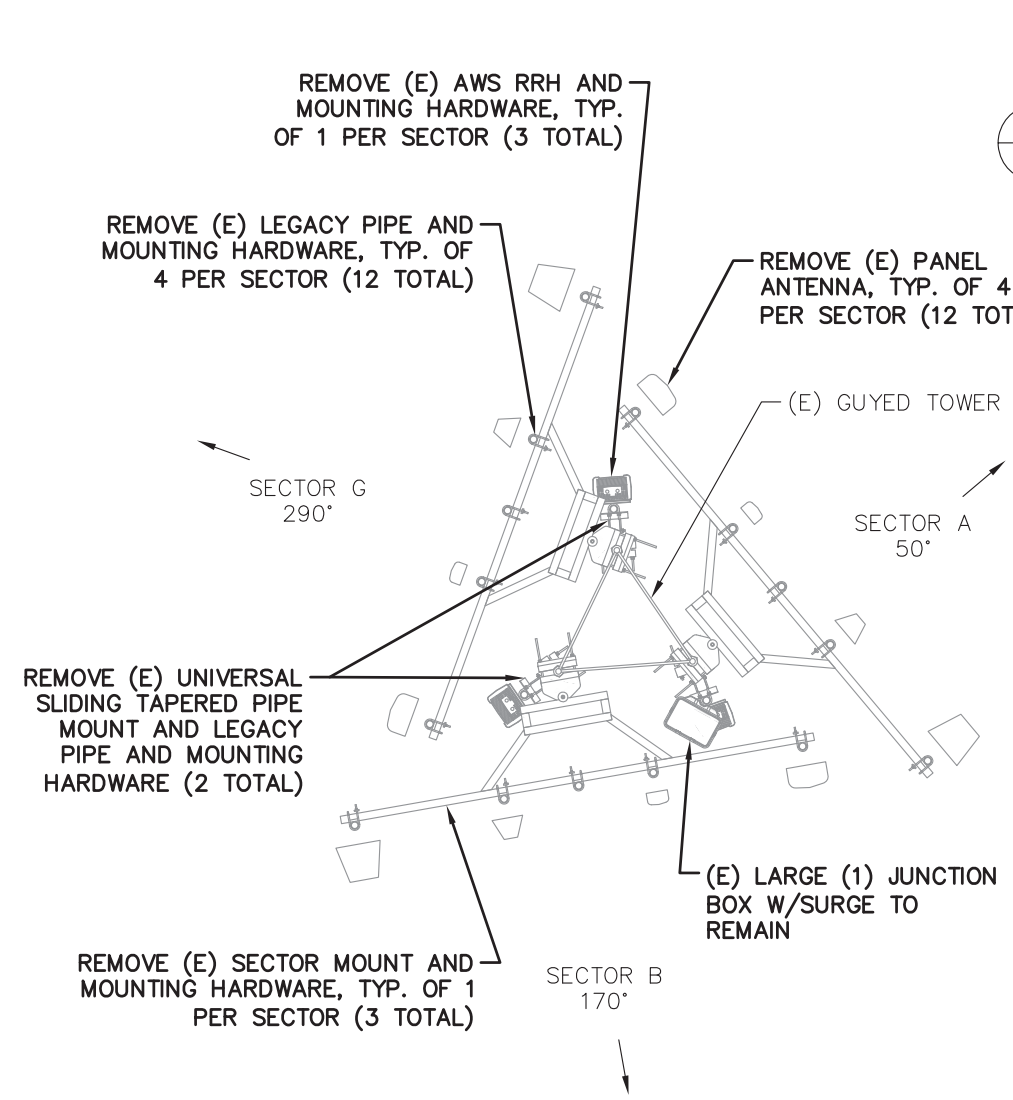
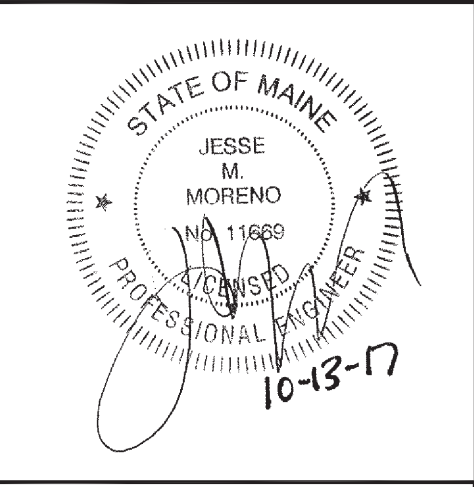
**verizon**

118 FLANDERS ROAD  
THIRD FLOOR  
WESTBOROUGH, MA 01581

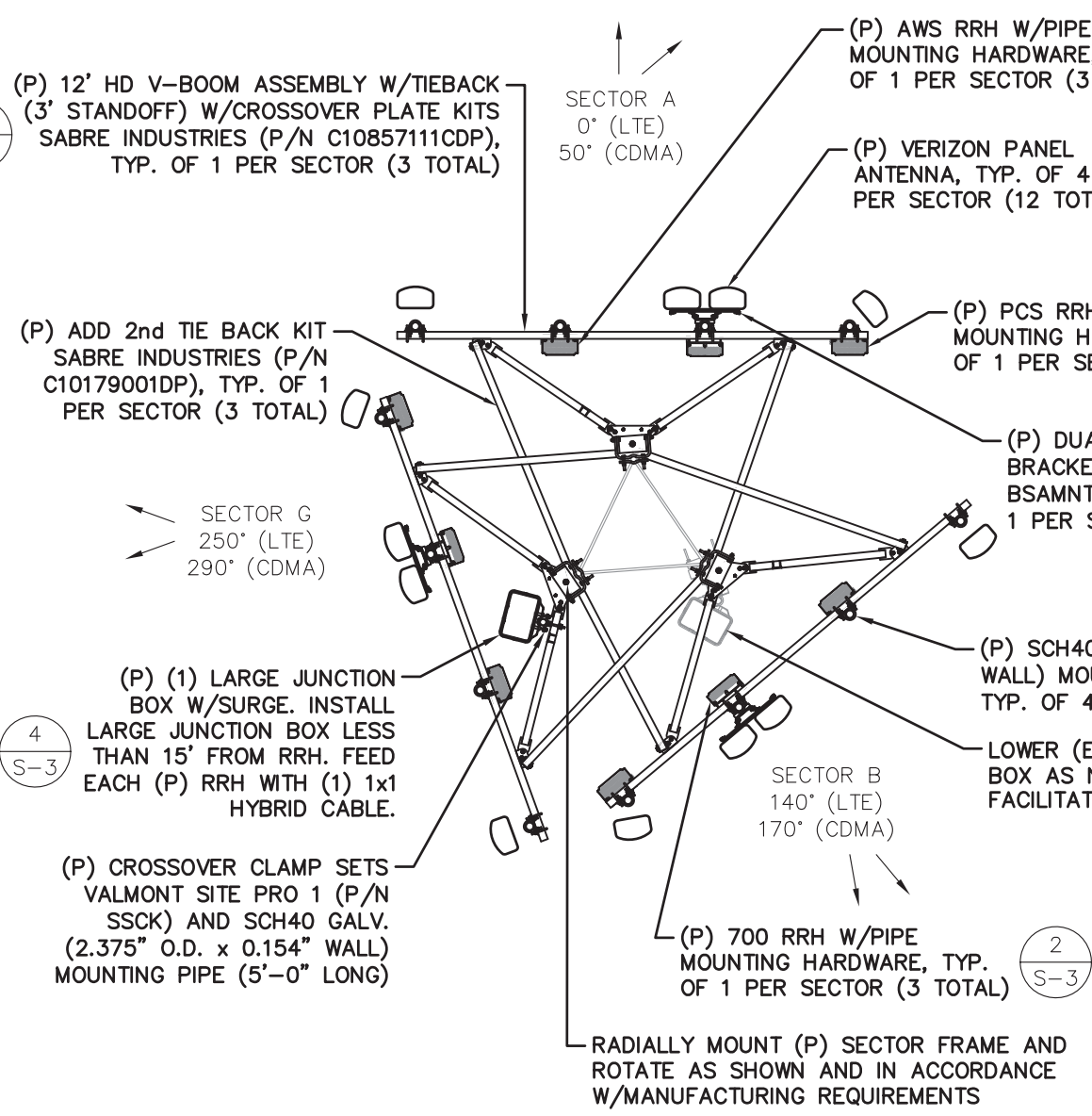
**PORTLAND N ME**  
**2017 UPGRADE**  
LOCATION CODE 136464  
**AMERICAN TOWER SITE#: 10047**  
222 RIVERSIDE INDUSTRIAL PKWY  
PORTLAND, ME 04103

REVISIONS	
0	2017 RFDS REV3 DATED OCTOBER 10, 2017

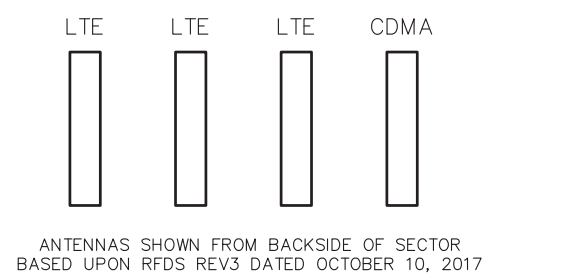
DESIGNED BY:	JWG/JMM	JOB #:	17-071
DRAWN BY:	TBD	REV. #:	0
DATE:	10/13/17	<b>A-1</b>	
SHEET:	1 OF 4		



**(E) ANTENNA PLAN**  
 SCALE: 1"=5'  
 1  
 S-1



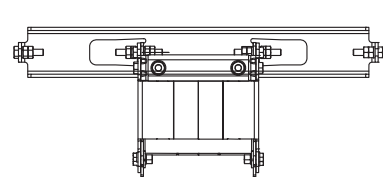
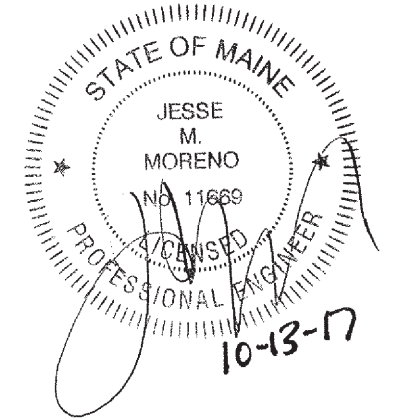
**(P) ANTENNA PLAN**  
 SCALE: 1"=5'  
 2  
 S-1



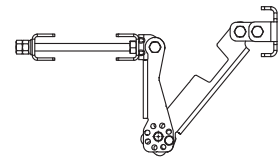
**(P) ANTENNA CONFIGURATION**  
 SCALE: NONE  
 3  
 S-1

REVISIONS	
0	2017 RFDS REV3 DATED OCTOBER 10, 2017

DESIGNED BY:	JWG/JMM	JOB #:	17-071
DRAWN BY:	TBD	REV. #:	0
DATE:	10/13/17	<b>S-1</b>	
SHEET:	2 OF 4		



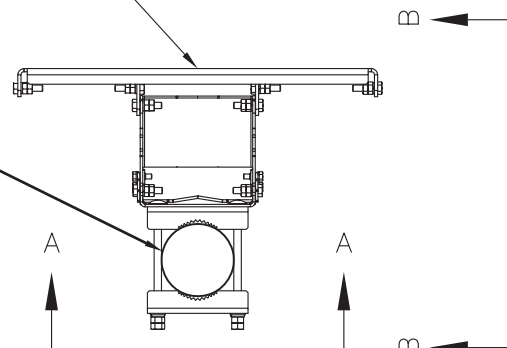
SECTION A-A



SECTION B-B

SIDE-BY-SIDE MOUNTING KIT  
COMMSCOPE (P/N BSAMNT-SBS-1-2),  
TYP. OF 1 PER SECTOR (3 TOTAL)

(P) MOUNTING PIPE, TYP.  
ORDER SEPARATELY



PLAN VIEW

12' HD V-BOOM ASSEMBLY  
W/TIEBACK (3' STANDOFF) SABRE  
INDUSTRIES (P/N C10857111CDP),  
TYP. OF 1 PER SECTOR (3 TOTAL)

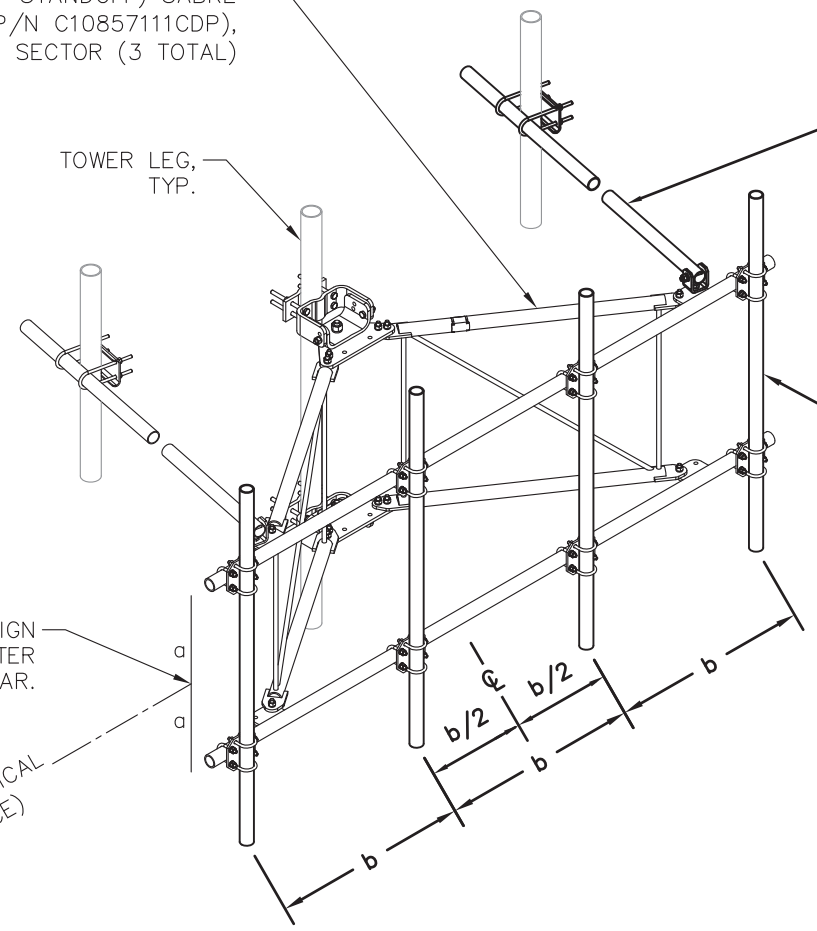
TOWER LEG,  
TYP.

(P) ADD 2nd TIE BACK KIT  
SABRE INDUSTRIES (P/N  
C10179001DP), TYP. OF 1  
PER SECTOR (3 TOTAL)

(P) SCH40 GALV. (2.875" O.D.  
x 0.203" WALL) MOUNTING  
PIPE (8'-0" LONG) ORDER  
SEPARATELY, TYP. OF 4 PER  
SECTOR (12 TOTAL)

VERTICALLY ALIGN  
ANTENNA RAD CENTER  
BETWEEN CROSSBAR.

RAD  $\phi$  272'  $\pm$  (6"  $\pm$  VERTICAL  
ECCENTRICITY TOLERANCE)



**(P) DUAL ANTENNA MOUNTING BRACKET DETAIL**

SCALE: NONE

1  
S-2

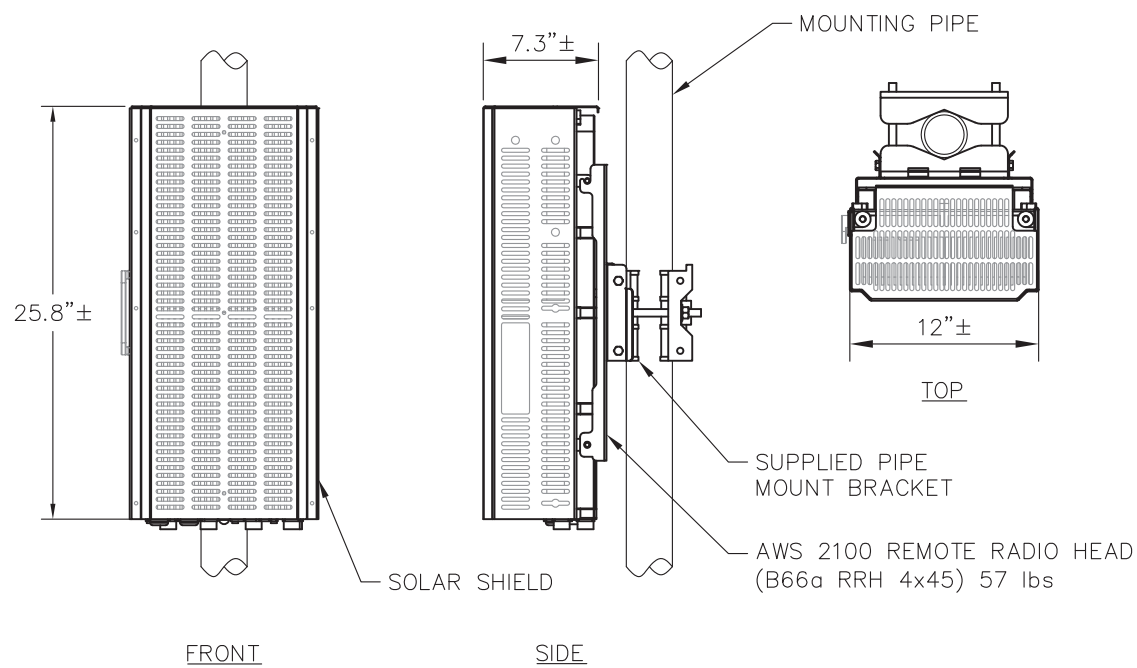
**(P) SECTOR FRAME**

SCALE: NONE

2  
S-2

REVISIONS	
0	2017 RFDS REV3 DATED OCTOBER 10, 2017

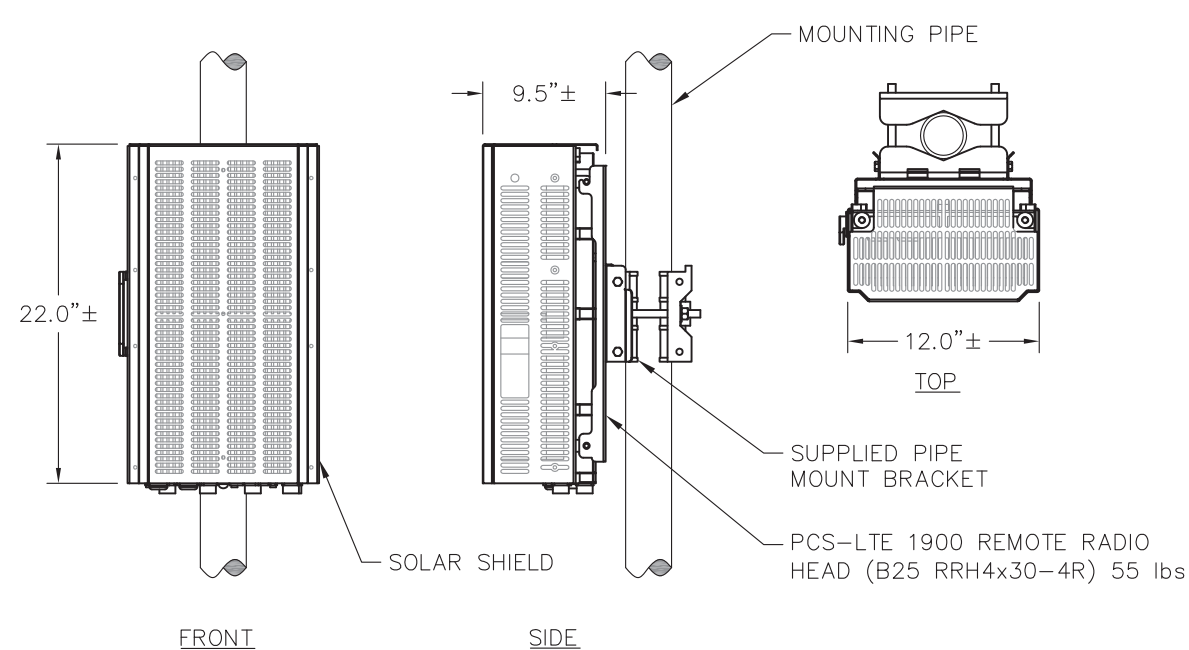
DESIGNED BY:	JWG/JMM	JOB #:	17-071
DRAWN BY:	TBD	REV. #:	0
DATE:	10/13/17	<b>S-2</b>	
SHEET:	3 OF 4		



**(P) AWS RRH MOUNTING DETAIL**

SCALE: NONE

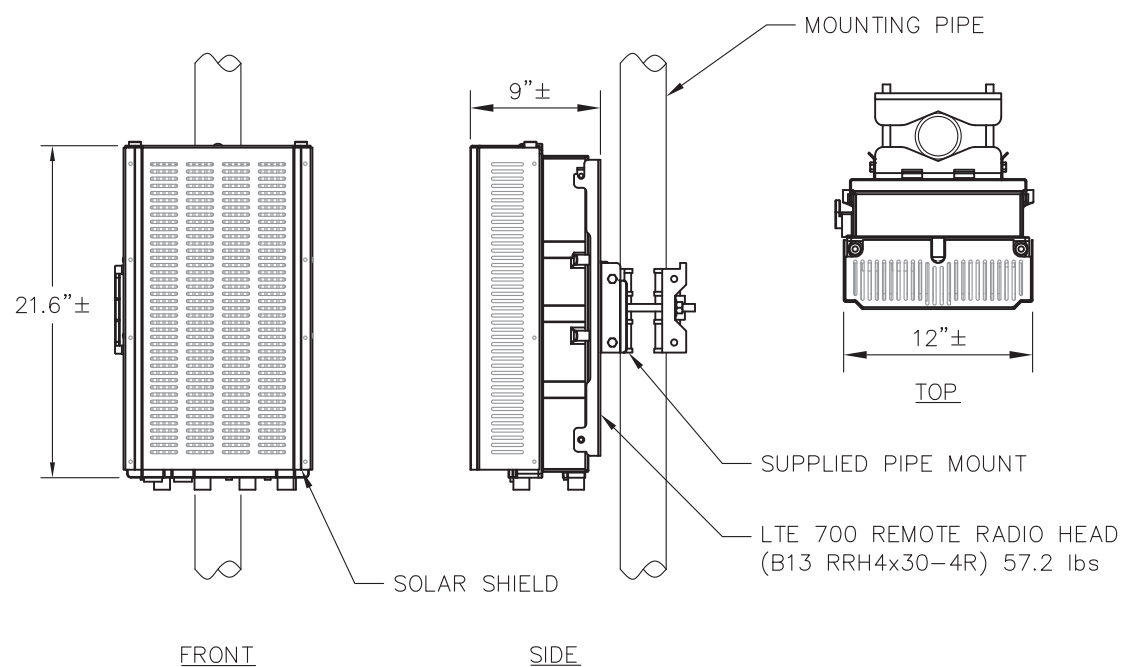
1  
S-3



**(P) PCS RRH MOUNTING DETAIL**

SCALE: NONE

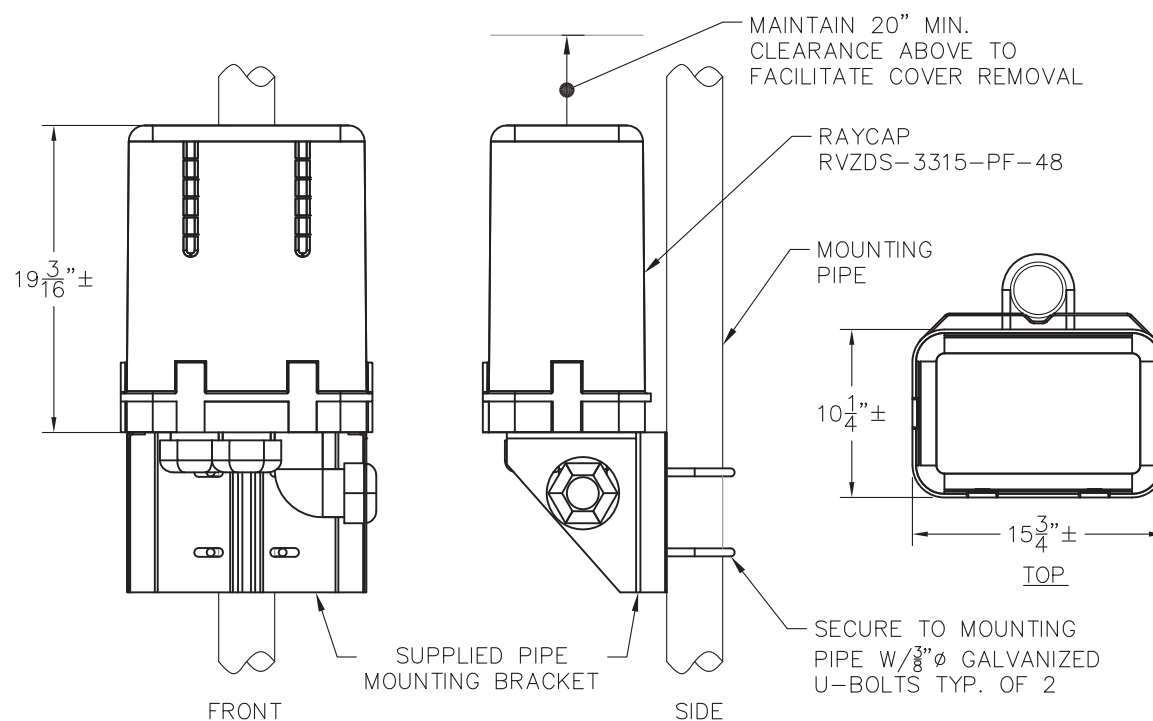
3  
S-3



**(P) 700 RRH MOUNTING DETAIL**

SCALE: NONE

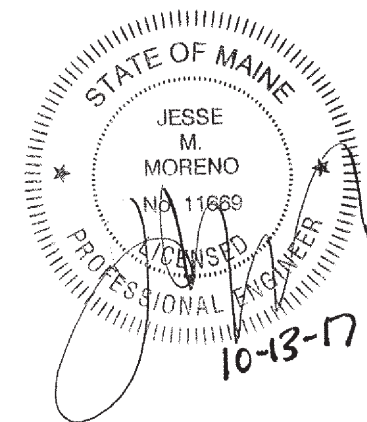
2  
S-3



**(E)/(P) LARGE JUNCTION BOX MOUNTING DETAIL**

SCALE: NONE

4  
S-3



**INSTALLATION NOTES:**

1. INSTALL ALL EQUIPMENT, MOUNTING BRACKETS, AND HARDWARE IN ACCORDANCE WITH MANUFACTURER'S RECOMMENDATIONS.
2. GROUND DISTRIBUTION BOXES, MOUNTING PIPES, AND RRHS IN ACCORDANCE WITH MANUFACTURER'S RECOMMENDATIONS.
3. INSTALL EQUIPMENT AND MOUNTING BRACKETS TO PRESERVE CLIMBING ACCESS ON TOWER.
4. EQUIPMENT TO BE INSTALLED AT VERIZON RAD. CENTER IN ACCORDANCE WITH GLOBAL TOWER STRUCTURAL ANALYSIS (BY OTHERS.)

**ProTerra**  
DESIGN GROUP, LLC

4 Bay Road  
Building A, Suite 200  
Hadley, MA 01035 (413)320-4918

**verizon**

118 FLANDERS ROAD  
THIRD FLOOR  
WESTBOROUGH, MA 01581

**PORTLAND N ME  
2017 UPGRADE  
LOCATION CODE 136464  
AMERICAN TOWER SITE#: 10047  
222 RIVERSIDE INDUSTRIAL PKWY  
PORTLAND, ME 04103**

REVISIONS	
0	2017 RFDS REV3 DATED OCTOBER 10, 2017

DESIGNED BY:	JWG/JMM	JOB #:	17-071
DRAWN BY:	TBD	REV. #:	0
DATE:	10/13/17	<b>S-3</b>	
SHEET:	4 OF 4		