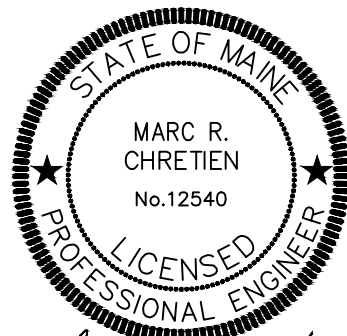


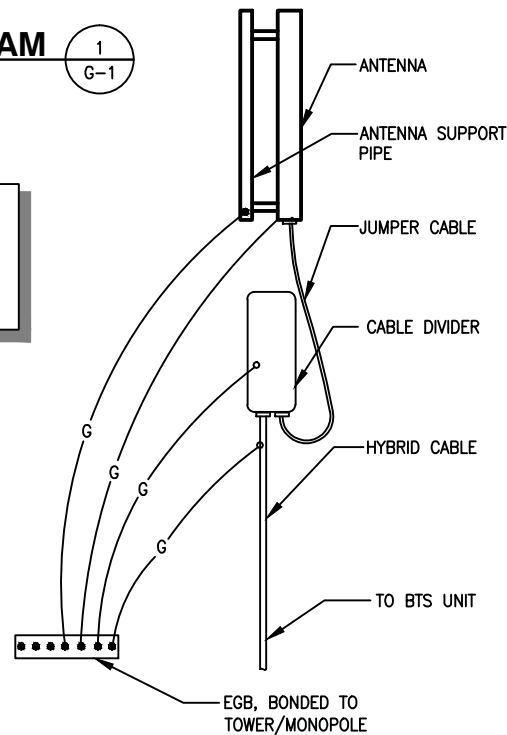
GROUNDING RISER DIAGRAM
SCALE: N.T.S.

1
G-1

NOTE:
1. A SITE VISIT/SURVEY WAS NOT CONDUCTED BY ADVANCED ENGINEERING GROUP, P.C. SITE INFORMATION AND PLANS ARE BASED UPON INFORMATION PROVIDED BY CLIENT CONTRACTOR TO VERIFY IN FIELD

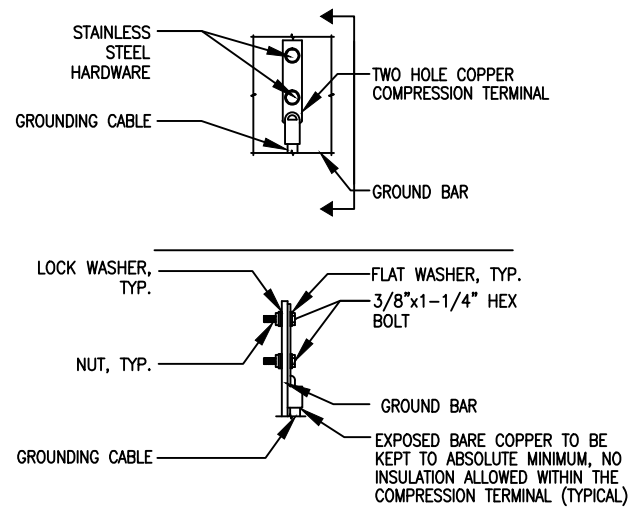


Marc R. Chretien



HYBRID CABLE CONNECTION & GROUNDING DETAIL
SCALE: N.T.S.

4
G-1

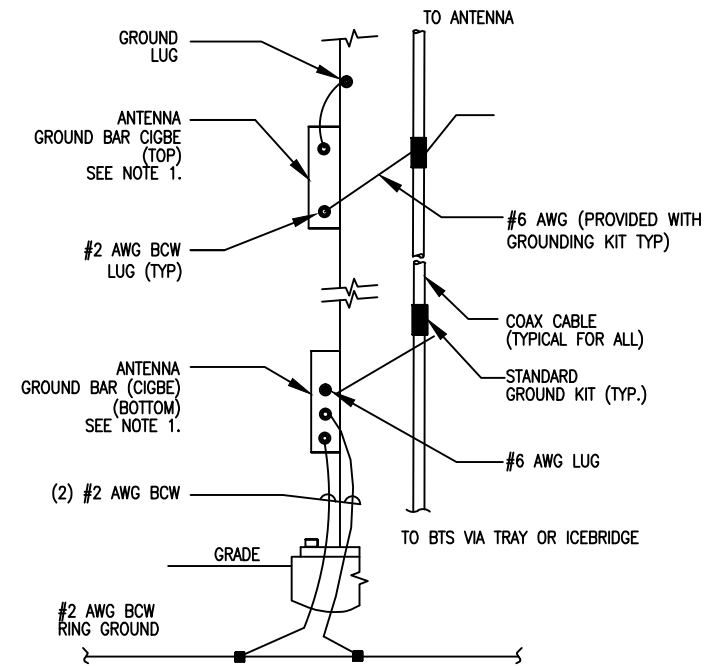


- NOTES:
1. "DOUBLING UP" OR "STACKING" OF CONNECTION IS NOT PERMITTED.
2. OXIDE INHIBITING COMPOUND TO BE USED AT ALL LOCATIONS.
3. CADWELD DOWNLEADS FROM UPPER EGB, LOWER EGB, AND MGB.
4. ALL GROUND LUGS MUST BE HEAT SHRUNK AT WIRE/LUG CONNECTION

TYP. GROUND BAR CONNECTION DETAIL

SCALE: N.T.S.

2
G-1

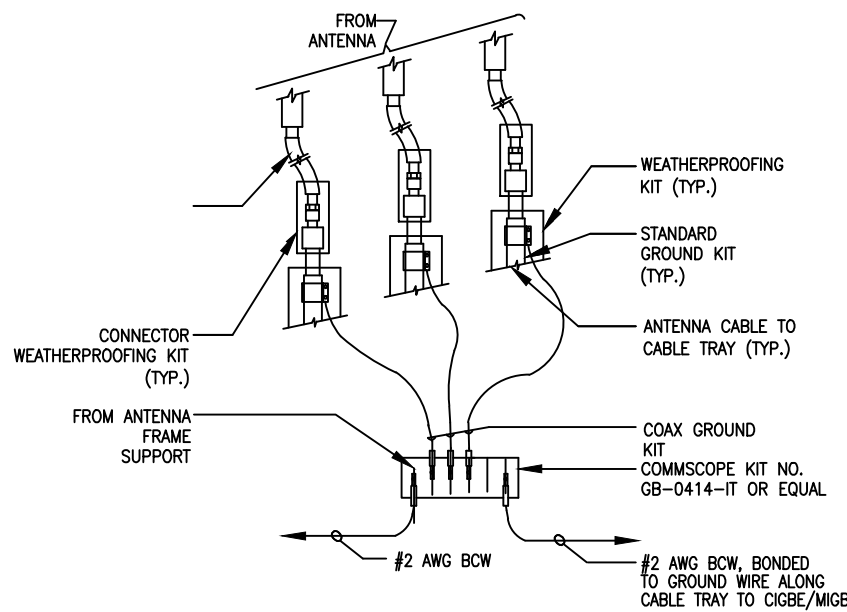


- NOTE:
1. NUMBER OF GROUND BARS MAY VARY DEPENDING ON THE TYPE OF TOWER, ANTENNA LOCATION AND CONNECTION ANTENNA LOCATION AND CONNECTION ORIENTATION. PROVIDE AS REQUIRED.
2. A SEPARATE GROUND BAR TO BE USED FOR GPS ANTENNA IF REQUIRED.

ANTENNA CABLE GROUNDING

SCALE: N.T.S.

3
G-1

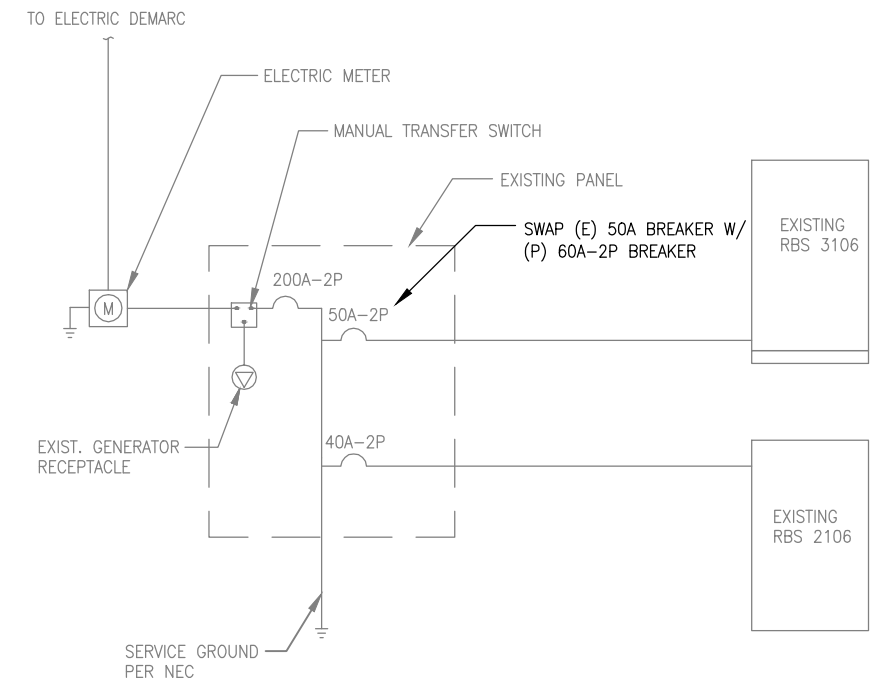


- NOTE:
1. DO NOT INSTALL CABLE GROUND KIT AT A BEND AND ALWAYS DIRECT GROUND WIRE DOWN TO CIGBE.

GROUND WIRE TO GROUND BAR CONNECTION DETAIL

SCALE: N.T.S.

5
G-1



ONE-LINE POWER DIAGRAM

SCALE: N.T.S.

6
G-1

HALF SIZE PRINT
THIS DRAWING IS SCALEABLE
AT TWICE THE NOTED SCALE

NO.	DATE	REVISIONS	BY	CHK	APP'D
2	05/15/14	REVISIONS	JTG	SNA	SNA
1	04/10/14	REVISIONS	JTG	SNA	SNA
0	03/26/14	ISSUED FOR REVIEW	JTG	SNA	SNA

SCALE: AS SHOWN
DESIGNED BY: SNA
DRAWN BY: JTG

JOB NUMBER		DRAWING NUMBER		REV
4DN2267B		E-1		2