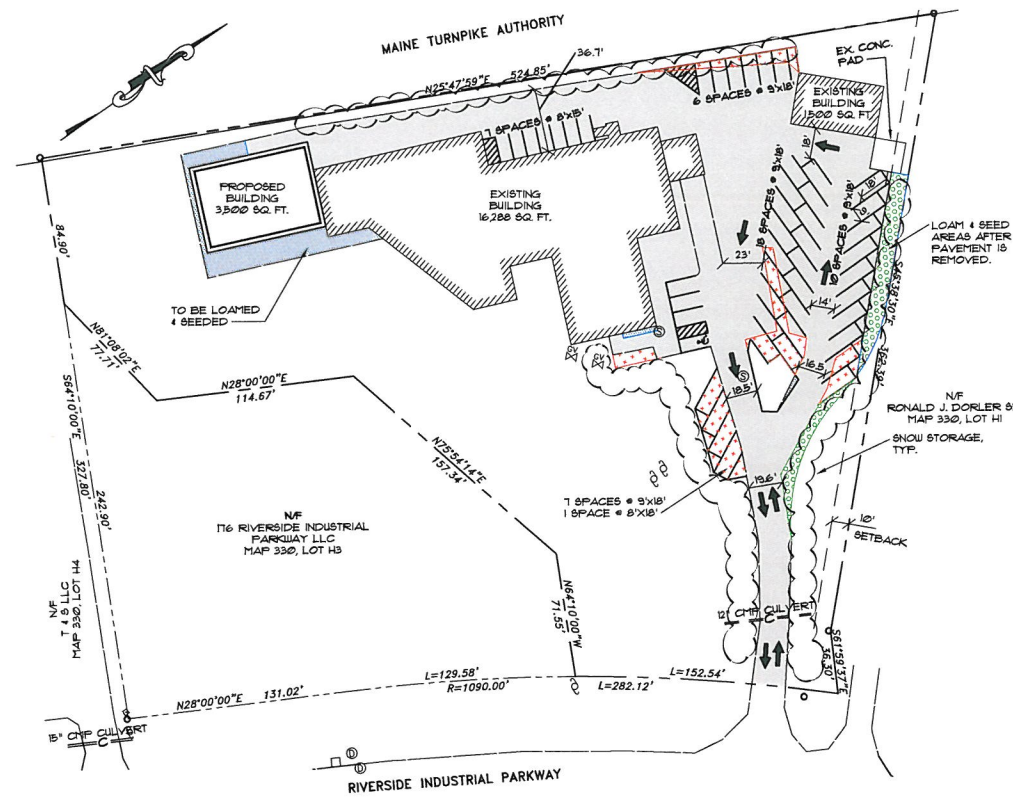


LANDSCAPE PLAN

1"=50'



SITE PLAN

1"=50'

**LEGEND**

- EXISTING**
- PROPERTY LINE
  - BUILDING SETBACK
  - ABUTTERS PROPERTY
  - EDGE OF PAVEMENT
  - CONTOURS
  - BUILDING
  - CULVERT
  - DRAIN MANHOLE
  - SEWER MANHOLE
  - CATCH BASIN
  - UTILITY POLE
  - GATE VALVE
  - IRON PIPE
  - BOUND FOUND

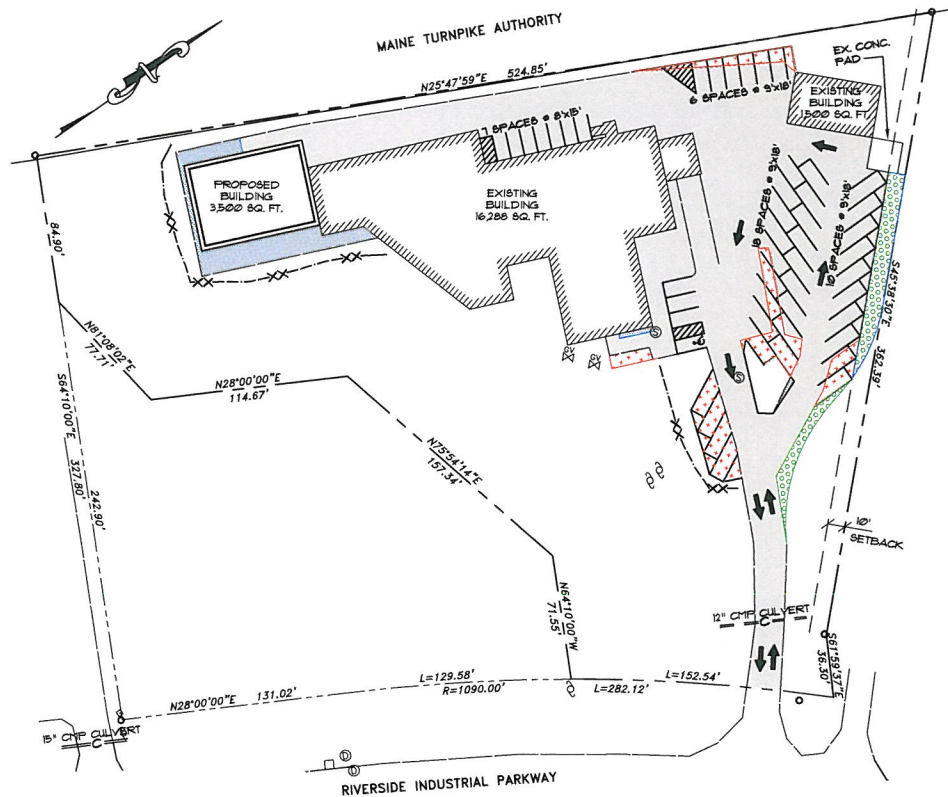
- PROPOSED**
- EDGE OF PAVEMENT
  - BUILDING
  - TRAFFIC FLOW
  - HANDICAP PARKING
  - PAVEMENT TO BE REMOVED

TOTAL LOT SIZE	117,956 SQ. FT.
TOTAL APPROVED BUILDING PRIOR TO 2015	17,788 SQ. FT.
TOTAL PROPOSED BUILDING 2015	3,500 SQ. FT.
TOTAL APPROVED PAVEMENT PRIOR TO 2015	34,730 SQ. FT.
TOTAL PROPOSED PAVEMENT 2015	2,713 SQ. FT.
TOTAL REMOVED PAVEMENT	1,842 SQ. FT.
TOTAL NET 2015 PAVEMENT	871 SQ. FT.

PARKING DEMAND = 42 SPACES  
PARKING PROVIDED = 49 SPACES

**NOTE ON BOUNDARY DATA:**

BOUNDARY DATA BY TITCOMB ASSOCIATES. NOTE IT IS NOT ON THE MAINE STATE COORDINATE SYSTEM.

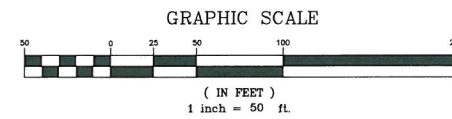


**EROSION CONTROL LEGEND**

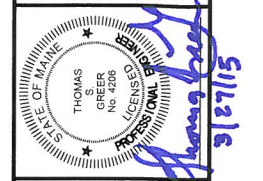
- SILT FENCE OR EROSION CONTROL BERM

EROSION CONTROL PLAN

1"=50'



**PINKHAM & GREER CIVIL ENGINEERS**  
28 WINDHAM AVE. PORTLAND, ME 04103  
TEL: 207.761.6407 FAX: 207.761.6405



REV.	DATE	DESCRIPTION

THE LEFEVRES LLC 200 RIVERSIDE INDUSTRIAL PARKWAY	DRN BY: RUS
SCALE: AS SHOWN	DES BY: TSG
DATE: MARCH 27, 2015	CHK BY: <b>TS</b>
PROJECT: 15102	

200 RIVERSIDE INDUSTRIAL PARKWAY  
PORTLAND, ME 04103

**PARKING LAYOUT**

**C1.1**