

R2 Zone  
 Front 25' Req 55' shown  
 Rear 25' Req 36' scaled  
 Side 2 story 14' Req  
 25' scaled  
 22' scale ↓

EXIST. SMH  
 RIM=55.7  
 INV.=47.6

Lot size 12,527  
 x 20%  
 2,505.4 SF  
 1120  
 252  
 1372  
 984 garage  
 2156 SF

01 PLOT PLAN  
 SCALE 1"=20'

may 13, 2015  
 PLOT PLAN

**WARD-LAFERRIERE ADDITION**

152 TUCKER AVENUE, PORTLAND, MAINE 04103

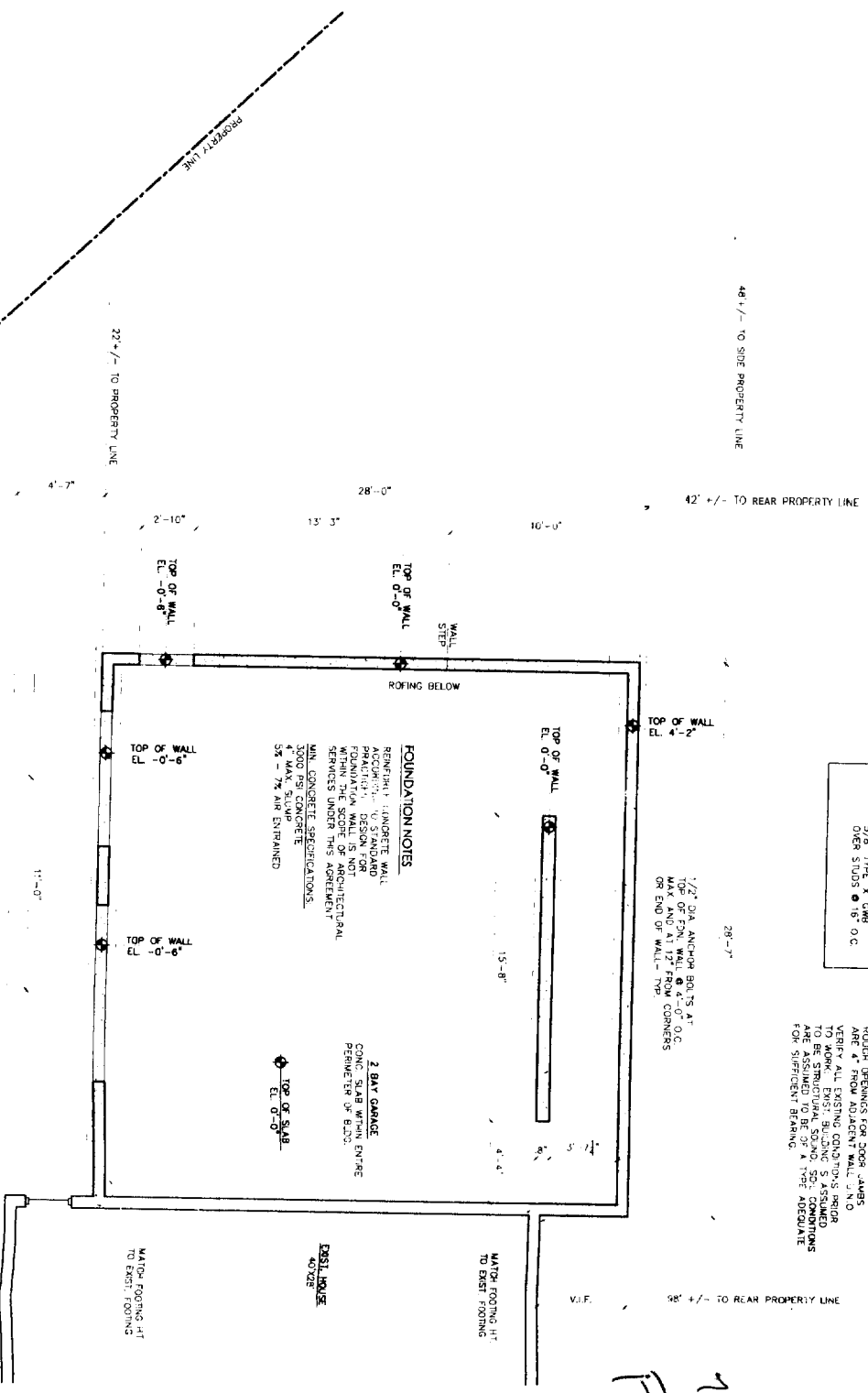
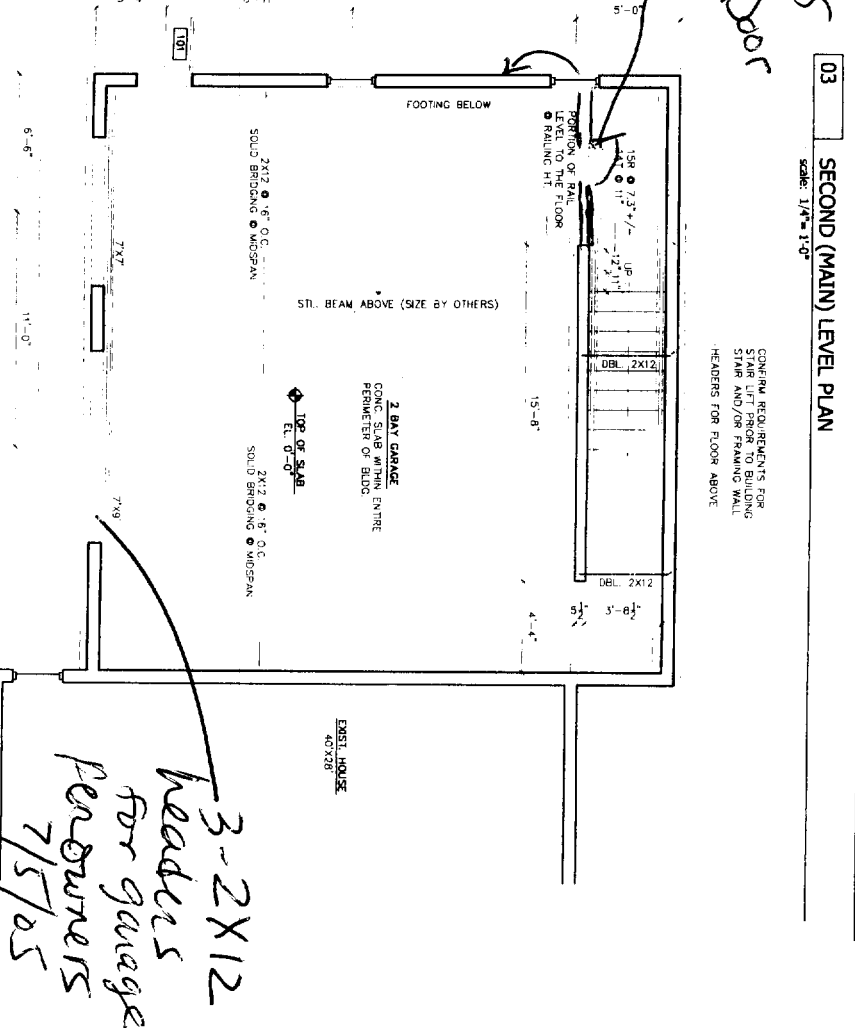
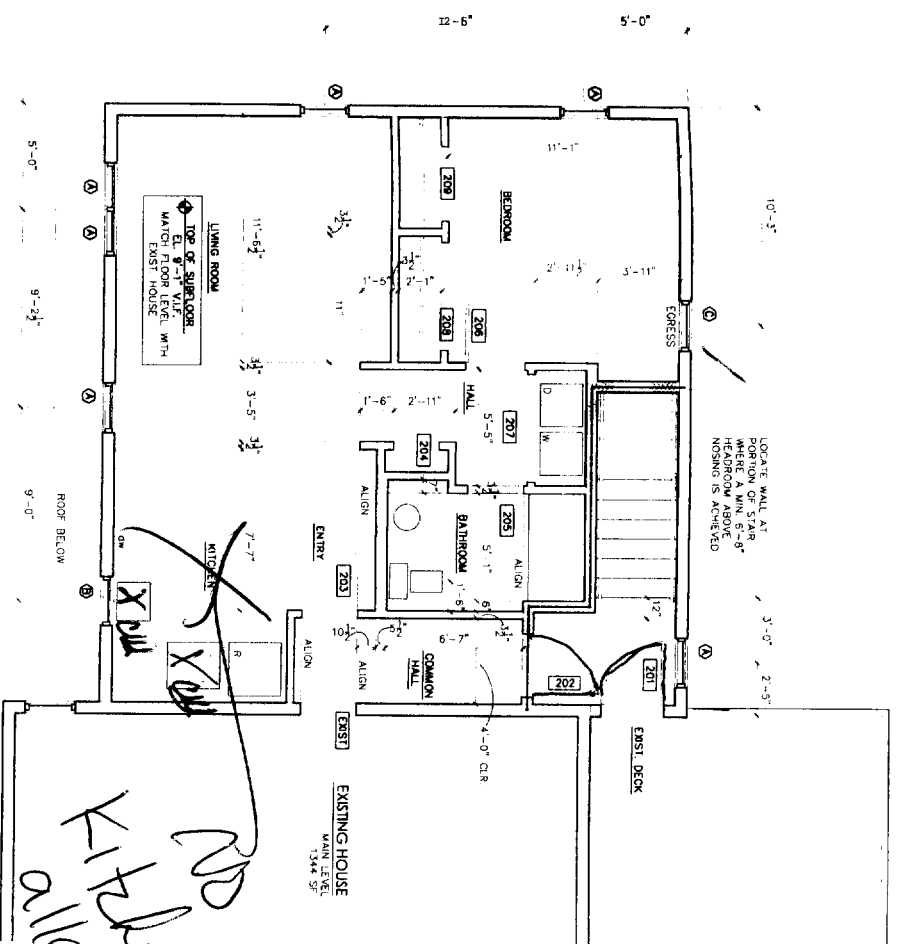


# WARD-LAFERRIERE ADDITION

152 TUCKER AVENUE, PORTLAND, MAINE 04103

NOV 13, 2005  
 OOR PLANNING NOTES  
 JILIN G DETL

**A-1**

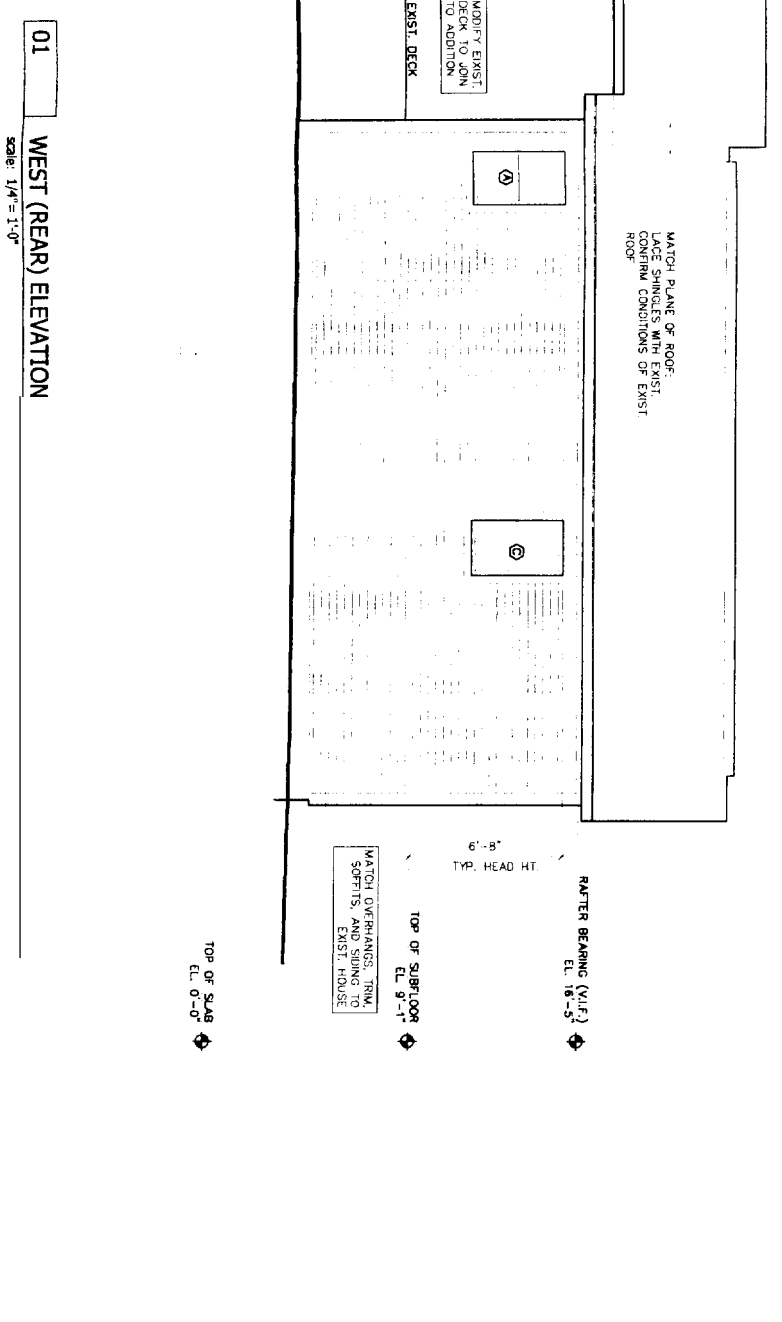
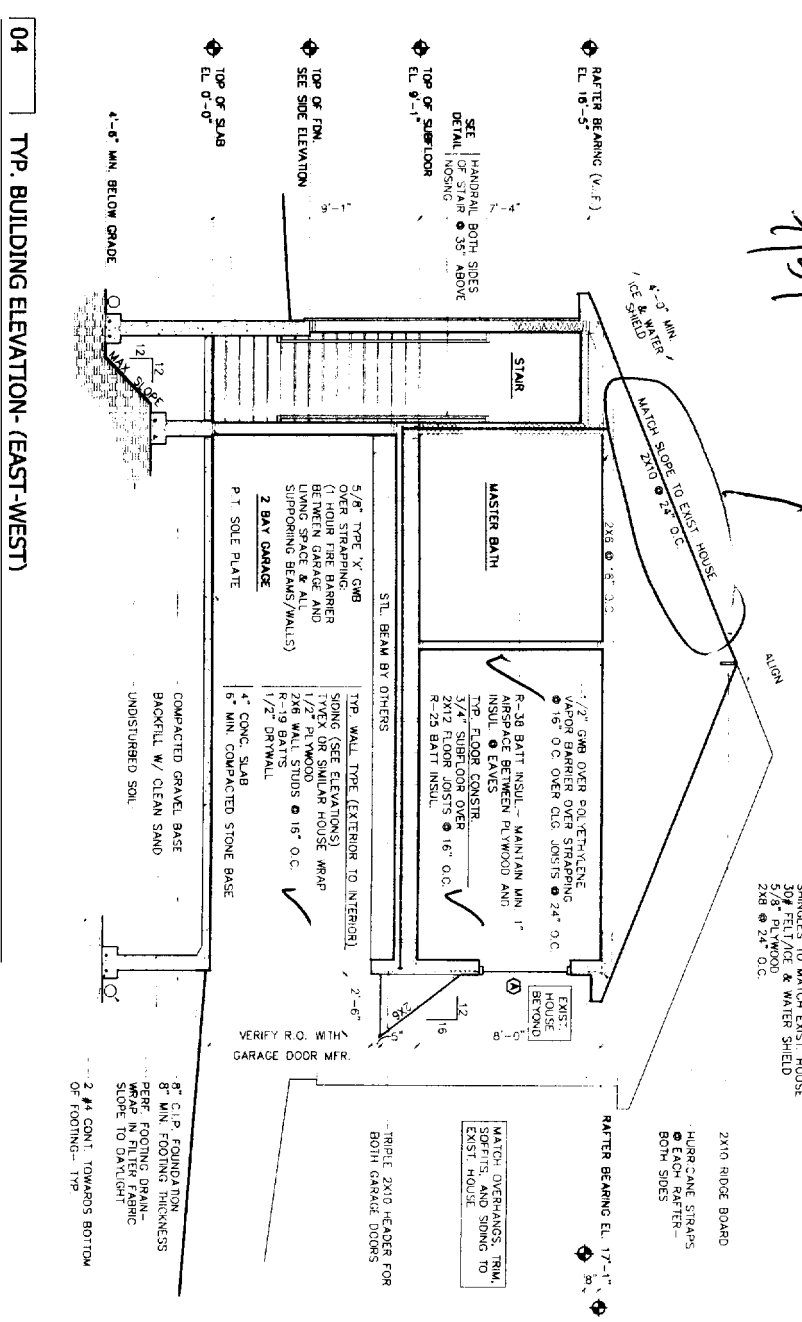
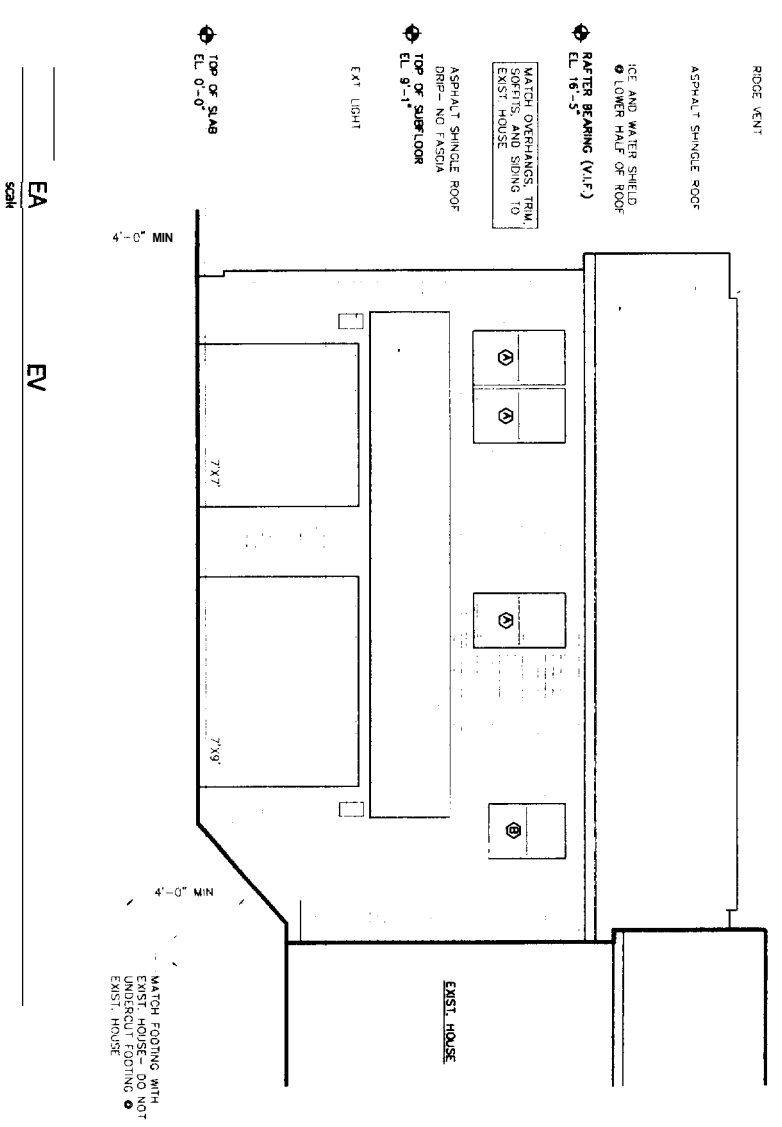
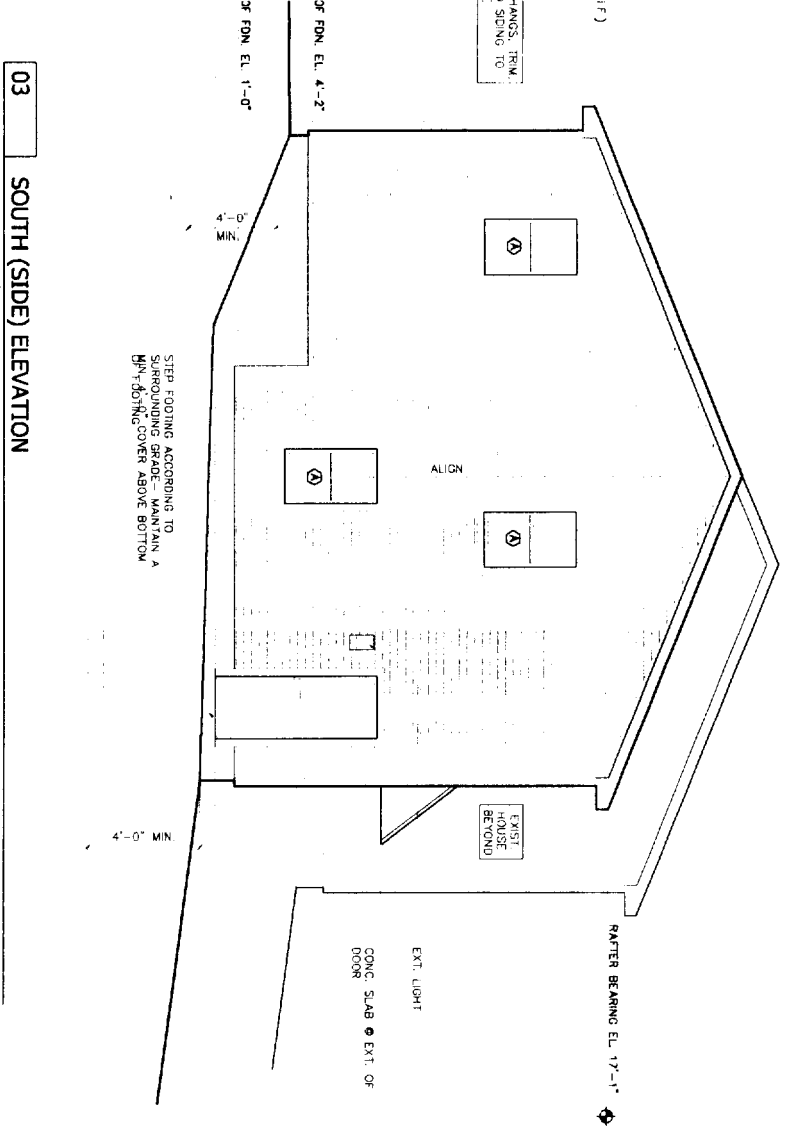


# WARD-LAFERRIERE ADDITION

152 TUCKER AVENUE, PORTLAND, MAINE 04103

MAY 13, 2005  
SILL DRG ELEVATIONS  
SILL DRG SECTION

A-2



*per OVERSAYS 2x12*  
*7/5/05*

TYP. ROOF CONSTR.  
SHINGLES TO MATCH EXIST. HOUSE  
3/8" FELT/ICE & WATER SHIELD  
2x8 @ 24" O.C.

2x10 ROOF BOARD  
HURRICANE STRAPS @ EACH RAFTER - BOTH SIDES

MATCH OVERHANGS, TRIM, CORNICES, AND SIDING TO EXIST. HOUSE

VERIFY R.O. WITH GARAGE DOOR MFR.

2 #4 CONT. TOWARDS BOTTOM OF FOOTING - TYP.

8" C.I.P. FOUNDATION  
8" MIN. FOOTING THICKNESS  
BEAR FOOTING DRAIN  
SLOPE TO DAYLIGHT

4" CONC. SLAB  
8" MIN. COMPACTED STONE BASE

2 BAY GARAGE  
P.T. SOLE PLATE

5/8" TYPE 'X' GWB OVER STRAPPING (4 HOUR FIRE RATED) 1/2" PLYWOOD LINING SPACE & ALL SIPROING BEAMS/WALLS

STL. BEAM BY OTHERS

2x8 @ 16" O.C. R-38 BATT INSUL. - MAINTAIN MIN. 1" AIRSPACE BETWEEN PLYWOOD AND INSUL. @ EAVES

1/2" GWB OVER 2x8 VENT-ROOFING LAPOR BRASSER OVER STRAPPING @ 15" O.C. OVER CLG. JOISTS @ 24" O.C.

1/2" GWB OVER 2x8 VENT-ROOFING LAPOR BRASSER OVER STRAPPING @ 15" O.C. OVER CLG. JOISTS @ 24" O.C.

1/2" GWB OVER 2x8 VENT-ROOFING LAPOR BRASSER OVER STRAPPING @ 15" O.C. OVER CLG. JOISTS @ 24" O.C.

6" TYP. HEAD HT.

TOP OF SUBFLOOR EL. 9'-1"

TOP OF SLAB EL. 0'-0"

RAFTER BEARING (V.L.F.) EL. 16'-5"

**WARD-LAFERRIERE ADDITION**  
 152 TUCKER AVENUE, PORTLAND, MAINE 04103

**ELECTRICAL LEGEND**

- ⌘ SWITCH
- ⊕ DUPLEX OUTLET
- CIRCUIT
- ⊕ GFCI GROUND FAULT INTERRUPTER\*\*
- SWITCH LOCATED ON LEVEL ABOVE OR BELOW
- ⊕ WP WATERPROOF DUPLEX OUTLET\*\*
- ⊕ SINGLE 220 VOLT OUTLET\*\*
- TV Δ DUAL TELEPHONE/CABLE JACK

\* MOUNT CENTER-LINE OF SWITCH @ 4'-0" AFF/FIN. GRADE UNLESS OTHERWISE NOTED

\*\* MOUNT OUTLET @ 12" AFF OR 8" ABOVE COUNTER UNLESS OTHERWISE NOTED

ALL OUTLETS/SWITCHES TO BE PURE WHITE W/ PURE WHITE COVER PLATES- TYP

**LIGHT FIXTURE LEGEND**

- PENDANT- (provide round junction box in ceiling)
- ⊕ CEILING FAN AND LIGHT
- ⊕ CEILING LIGHT
- ⊕ EXHAUST FAN- VENT THRU EXT. WALL
- ⊕ WALL MOUNTED LIGHT (provide round junction box in wall)
- ▭ 2' FLUORESCENT- (mount to header above closet doors)
- ⊕ PORCELIN SOCKET

**GENERAL ELECTRICAL NOTES**

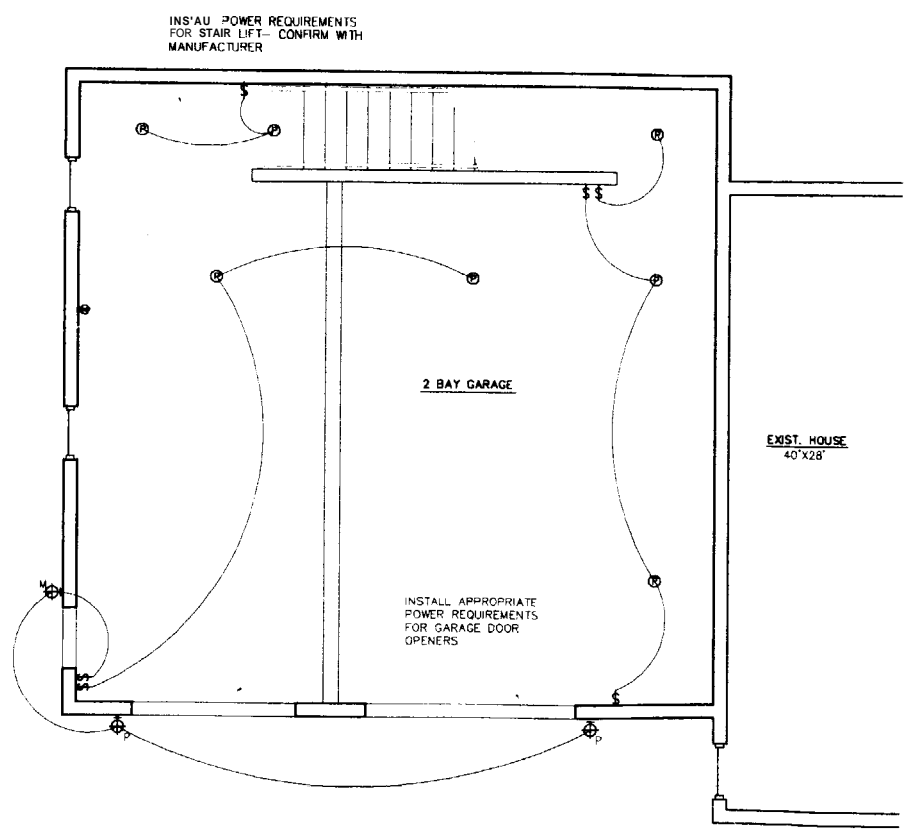
INSTALL HARD-WIRED SMOKE ALARMS AS REQ'D BY CODE

REQUIRED OUTLETS, LIGHTS, AND SMOKE ALARMS BY CODE. ALL WIRING TO BE PERFORMED ACCORDING ALL NATIONAL, LOCAL, AND CITY CODES.

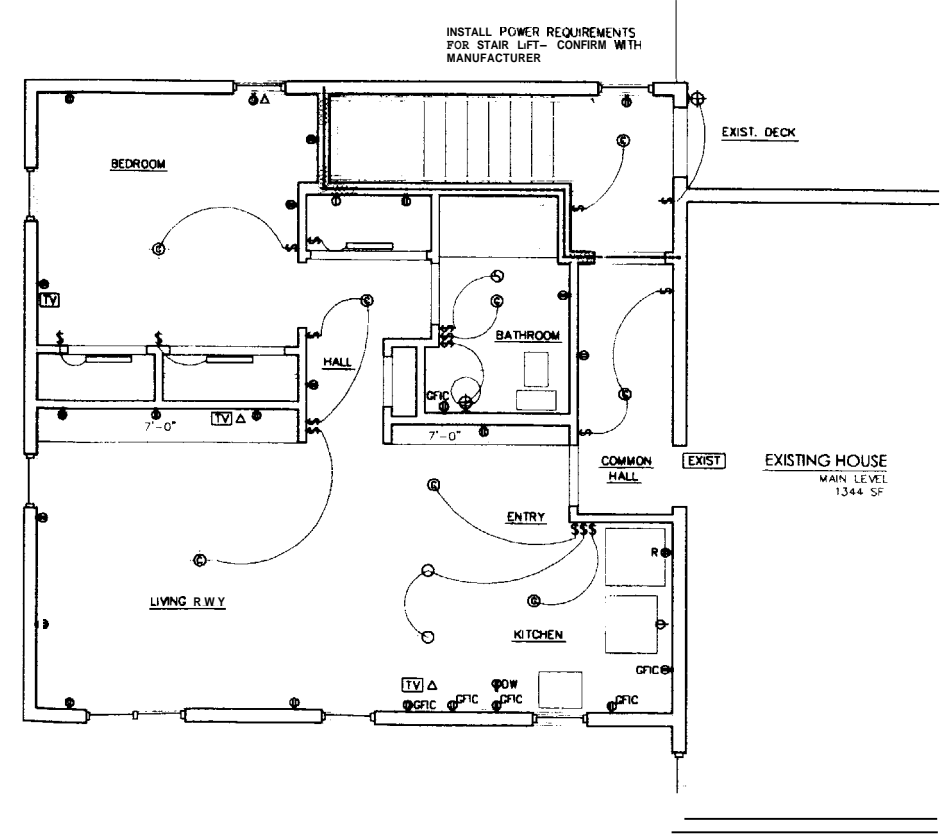
CEILING/ BULKHD. BELOW TYP. CLG HEIGHT

FIXTURE MOUNTING HT.

- WALL MOUNTED
- ⊕ PHOTO SENSOR
- ⊕ MOTION SENSOR



**02 GARAGE (GROUND) LEVEL PIAN**  
 scale: 1/4"=1'-0"



**01 SECOND (MAIN) LEVEL ELECTRICAL PIAN**  
 scale: 1/4"=1'-0"

may 13, 2005  
 ELECTRICAL PLANS