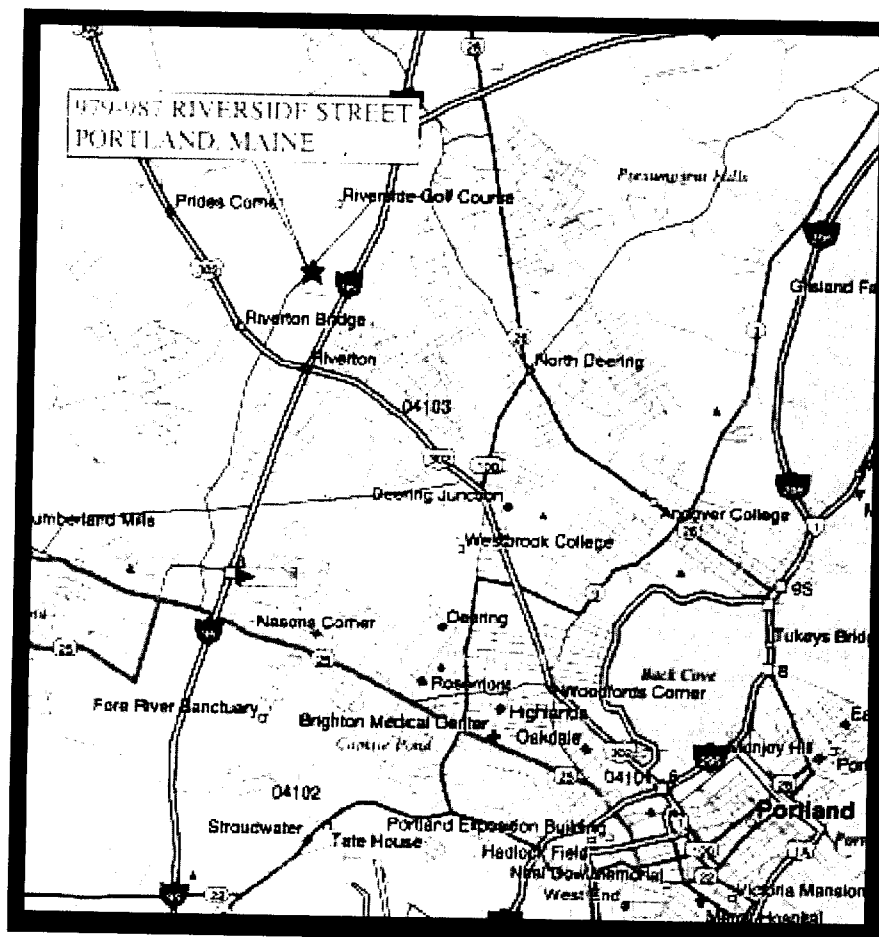


# 979 Riverside St., Portland, Maine

<b>Landlord:</b>	Robert S. Young, Sr.	<b>Utilities:</b>	Municipal
<b>Building Size:</b>	10,000+/- sf	<b>Heat:</b>	Warehouse: Oil Fired forced hot air Office: Electric Baseboard
<b>Available Space:</b>	Unit 3 3,200+/- sf	<b>Bathrooms:</b>	One (1) half bath
<b>Zoning:</b>	Industrial (I-1)	<b>Parking:</b>	Ample on-site paved parking with additional parking to rear of building.
<b>Ceiling Height:</b>	Warehouse: 16' to overhead joist Office: 9' to dropped ceiling	<b>Availability:</b>	Immediately
<b>Loading Dock Door:</b>	One, 10'x10' door	<b>Asking Rent:</b>	\$6.00/sf NNN
<b>Electrical:</b>	Single Phase 120/240v 200Amp. Separately metered and paid by Tenant.	<b>Estimated NNN Expenses:</b>	\$1.60/sf



**Contact Information:**  
**Craig S. Young, CCIM**  
CYoung@Boulos.com  
T. 207.772.1333  
F. 207.871.1288

**CBRE** | The Boulos Company  
CB RICHARD ELLIS

© 2003 CB Richard Ellis/ The Boulos Company. The information above has been obtained from sources believed reliable. While we do not doubt its accuracy, we have not verified it and make no guarantee, warranty or representation about it. It is your responsibility to independently confirm its accuracy and completeness. Any projections, opinions, assumptions or estimates used are for example only and do not represent the current or future performance of the property. The value of this transaction to you depends on tax and other factors which should be evaluated by your tax, financial and legal advisors. You and your advisors should conduct a careful, independent investigation of the property to determine to your satisfaction the suitability of the property for your needs.