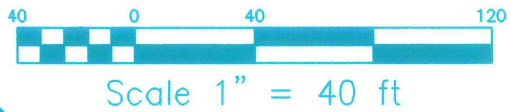


329-B-6

919-947 Riverside St.

Lot #13 LLC Building #2

Kowabunga LLC



EROSION CONTROL NOTES

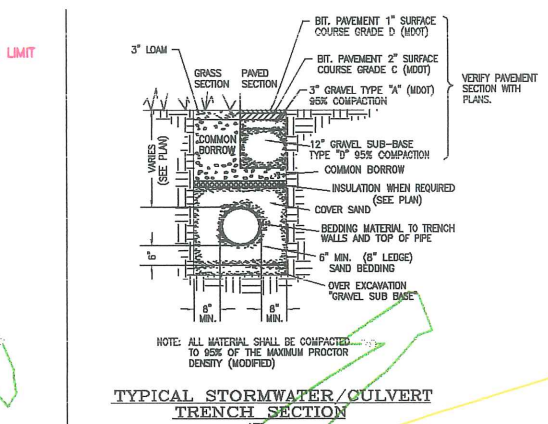
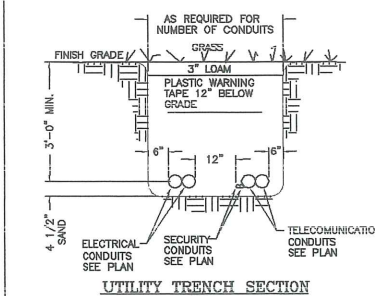
- A. SILT FENCE MUST BE INSTALLED PRIOR TO ANY CONSTRUCTION ACTIVITY AND MUST BE MAINTAINED AS PER THE "MAINE EROSION AND SEDIMENT CONTROL HANDBOOK FOR CONSTRUCTION: BEST MANAGEMENT PRACTICES" PUBLISHED BY THE MAINE D.E.P. MARCH, 1991 EDITION.
- B. EROSION CONTROL WILL BE SCHEDULED AS FOLLOWS: SILT FENCING WILL BE INSTALLED PRIOR TO COMMENCEMENT OF WORK. ALL AREAS TO BE SEEDED WILL BE TEMPORARILY STABILIZED WITHIN 7 DAYS OF DISTURBANCE. AREAS WILL BE INSPECTED ONCE A WEEK OR AFTER EVERY RAIN/SNOW OF 1/2" OR MORE OF WATER. ALL ERODED AREAS OF THE NEW GRASS WILL BE REPAIRED IN 1 WEEK OF OCCURRENCE WEATHER PERMITTING. ROUTINE MAINTENANCE WILL CONTINUE UNTIL THE GRASS AREAS ARE WELL ESTABLISHED.
- C. DISTURBED AREAS WILL RECEIVE 4" LOAM, LIME AT THE RATE OF 90 LB./1000 S.F., FERTILIZED WITH 11 LB./1000 S.F. OF 10-20-20. SEED WILL BE LOFT SEED CO.'S, WILD FIELD GRASS MIX AT 25 LB./1000 S.F. WITH HAY MULCH APPLIED AT THE RATE OF 15 LB./1000 S.F. ALL AREAS NOT WELL ESTABLISHED IN 30 DAYS WILL BE RESEEDED AND MULCHED.
- D. THE CONTRACTOR IS RESPONSIBLE FOR IMPLEMENTATION AND MAINTENANCE AND INSPECTION OF EROSION CONTROL MEASURES UNTIL ALL AREAS ARE WELL ESTABLISHED.
- E. WHERE THESE REGULATIONS DIFFER FROM OTHER EROSION/SEDIMENTATION NOTES, THE MOST STRINGENT SHALL BE USED.
- F. PLANT PERMANENT VEGETATION AND INSTALL STRUCTURES AS SOON AS POSSIBLE FOR THE PURPOSE OF SOIL STABILIZATION AND REVEGETATION.
- G. CONTACT KEN LAMOREAUX AT THE SHERIDAN CORP. P.O. BOX 359 FAIRFIELD, MAINE (207)453-9311 FOR EROSION ISSUES.

SPECIAL SITE WORK NOTES

- NOTE: ALL WETLANDS ARE TO BE PROTECTED FROM DISTURBANCE TO THE BEST POSSIBLE EXTENT.
- NOTE: ALL EROSION CONTROL MEASURES, SILT FENCES—STONE CHECK DAMS—HAY BALES—ECT., ARE TO BE REMOVED AFTER VEGETATION IS WELL ESTABLISHED AND WILL NO LONGER BE EASILY SUSCEPTIBLE TO EROSION.
- NOTE: EXISTING WATER SERVICE IN INDUSTRIAL WAY TO BE PLUGGED PER WATER DISTRICT RULES. SUBCONTRACTOR MUST NOTIFY AND COORDINATE WITH WATER DISTRICT TO PLUG AND TAP LINES.
- NOTE: SEE SHEET SD-3 FOR EROSION CONTROL DETAILS.

NOTE:

ALL EXISTING UTILITIES ARE DEPICTED IN THEIR MOST LIKELY LOCATIONS BASED ON THE BEST INFORMATION AVAILABLE THIS DATE. IT IS THE SOLE RESPONSIBILITY OF THE CONTRACTOR/SUBCONTRACTOR TO FIELD VERIFY LOCATIONS AND BASE ALL PROPOSALS ON VERIFIED INFORMATION. THE SHERIDAN CORP. IS NOT LIABLE FOR CONTRACTOR/SUBCONTRACTOR'S ERRORS DUE TO UNVERIFIED FACTS.

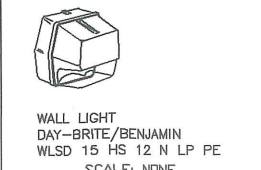
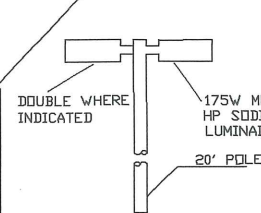
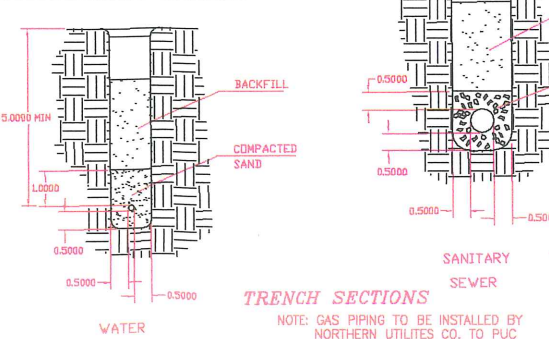
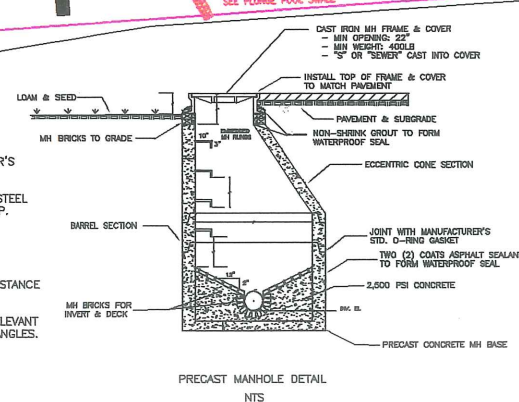


SIGN LOCATION FOR CITY APPROVAL ONLY. PERMITS, DESIGN & CONSTRUCTION NOT PART OF THESE PLANS.

NOTE: SILT FENCE IS ALSO LIMIT OF CONSTRUCTION. WETLAND AREAS TO BE PRESERVED TO ALL EXTENTS POSSIBLE.

TYPICALLY ALL LOCATIONS WITH THIS SYMBOL: USE STONE SPLASH PAD IN AREAS SHOWN 1-1/2" CRUSHED STONE 40% SLOPES OR LESS. D50(S"MIN.) RIPRAP SLOPES GREATER THAN 40%. DEPTH D₅₀ MIN. DEPTH 4" PLACED ON MIRAFI 700N FABRIC OR EQUAL

- PRECAST MANHOLE NOTES**
- 1) MH SECTIONS TO BE REINFORCED WITH MANUFACTURER'S STANDARD STEEL WIRE MESH.
 - 2) MH RING MATERIAL: 5/8" DIA. TYPE 304 STAINLESS STEEL BAR STOCK OR POLYPROPYLENE-COATED STEEL STEP.
 - 3) EMBEDDED HARDWARE TO INCLUDE MANUFACTURER'S STANDARD FLEXIBLE SEWER PIPE COUPLINGS WITH STAINLESS STEEL FASTENERS.
 - 4) INSTALL SEWER PIPE SO AS TO MAINTAIN 12" MAX. DISTANCE FROM MH WALL TO NEAREST PIPE JOINTS.
 - 5) REFER TO SEWER PLAN AND PROFILE SHEETS FOR RELEVANT PIPE INVERT ELEVATIONS, SIZES AND HORIZONTAL ANGLES.



- LEGEND:**
- PP ⊕ PROPERTY PIN
 - ⊕ UTILITY POLE
 - ⊕ GUY ANCHOR
 - ⊕ HYDRANT
 - ⊕ CONIFEROUS TREE
 - ⊕ DECIDUOUS TREE
 - ⊕ WALL MOUNTED LIGHT
 - ⊕ NEW LIGHT ON POLE
 - ⊕ EXISTING LIGHT POLE
 - ⊕ SANITARY MANHOLE
 - ⊕ EXISTING CONTOUR
 - FINISH CONTOUR
 - FINISH SPOT GRADE
 - PROPERTY LINE
 - EROSION FENCE
 - HAY BALES
 - STONE CHECK DAM
 - NEW ELECTRIC LINES
 - NEW GAS LINES
 - NEW SEWER LINES
 - NEW WATER LINES

LOT 13 L.L.C.
c/o 100 SILVER STREET
PORTLAND, MAINE

UTILITY & EROSION CONTROL
LOT #13, TURNPIKE IND. PARK
RIVERSIDE ST., PORTLAND, ME

DESIGN BUILDER

9723 SD-2

DATE: 3/29/98
REVISION: 2/17/98
DRAWN BY: KSL
APPROVED BY: KSL
SCALE: 1"=40'
DATE: 1/19/98
PROJECT: WASTED LOCATION OF BUILDING #1
MCSOUD PB LOT123 2/86n N:EP74 MCL00V PB1972398

SPURWINK SCHOOL