



HARRIMAN

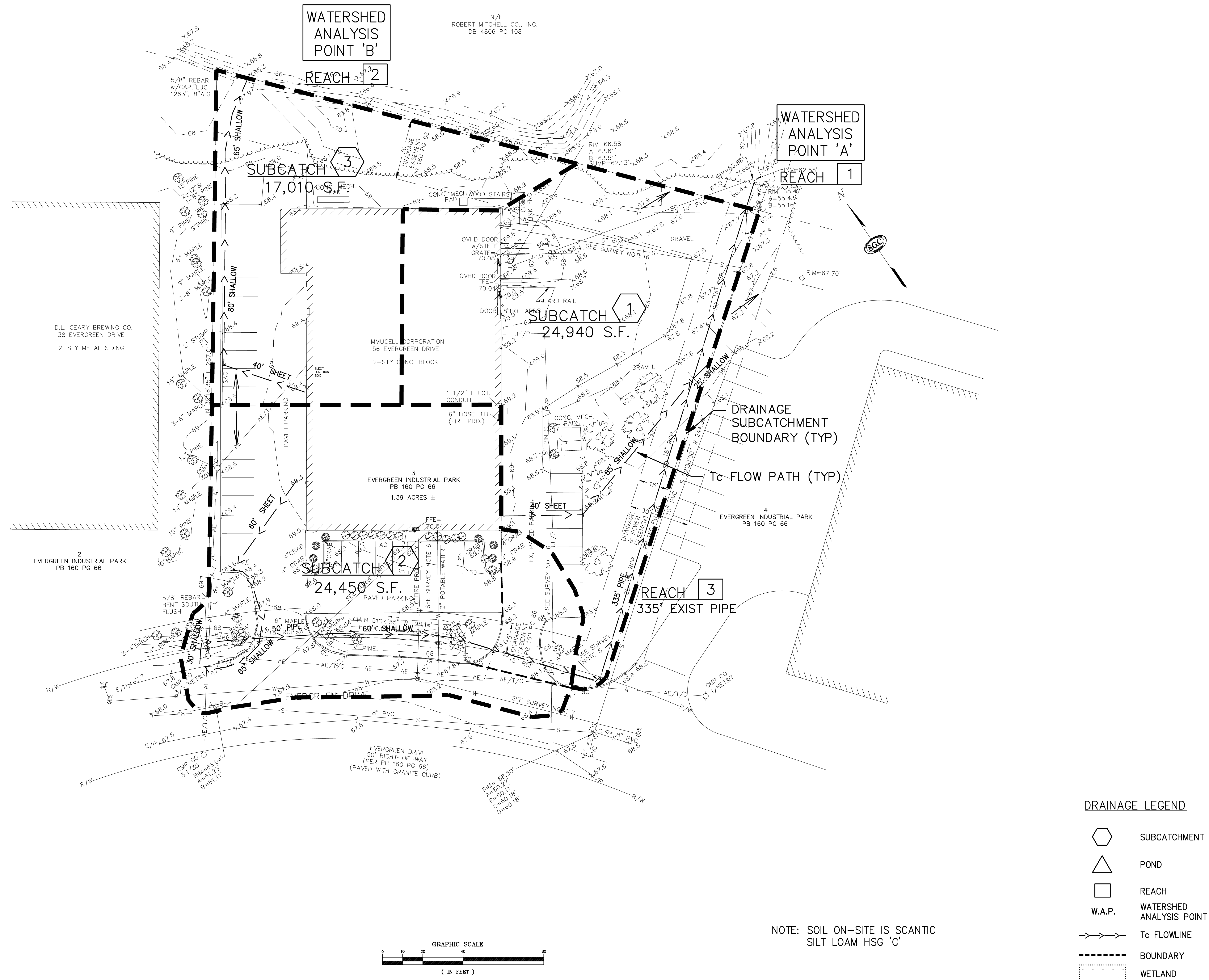
AUBURN PORTLAND MANCHESTER

IMMUCELL CORPORATION ADDITION

PORTLAND, MAINE

Harriman Project No. 14326

Key Plan



WATERSHED ANALYSIS POINT 'B'

WATERSHED ANALYSIS POINT 'A'

REACH 2

REACH 1

SUBCATCH 3
17,010 S.F.

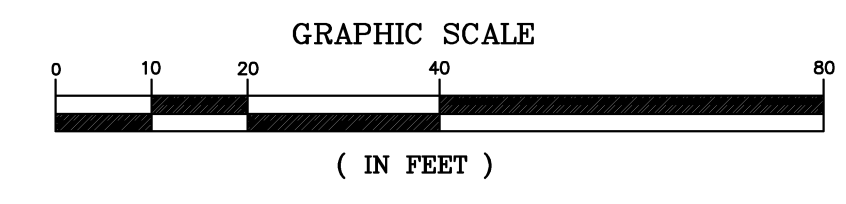
SUBCATCH 1
24,940 S.F.

SUBCATCH 2
24,450 S.F.

REACH 3
335' EXIST PIPE

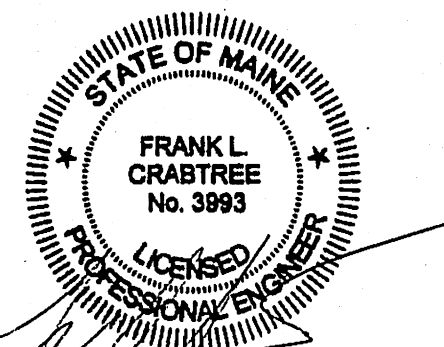
DRAINAGE LEGEND

- SUBCATCHMENT
- POND
- REACH
- W.A.P.
- Tc FLOWLINE
- BOUNDARY
- WETLAND



NOTE: SOIL ON-SITE IS SCANTIC SILT LOAM HSG 'C'

Mark	Date	Description
	05-22-14	PLANNING BOARD REVIEW



PA/PE: FLC © 2014
Drawn By: PLS Harriman Associates

PRE-DEVELOPMENT DRAINAGE PLAN

C8