

HARRIMAN

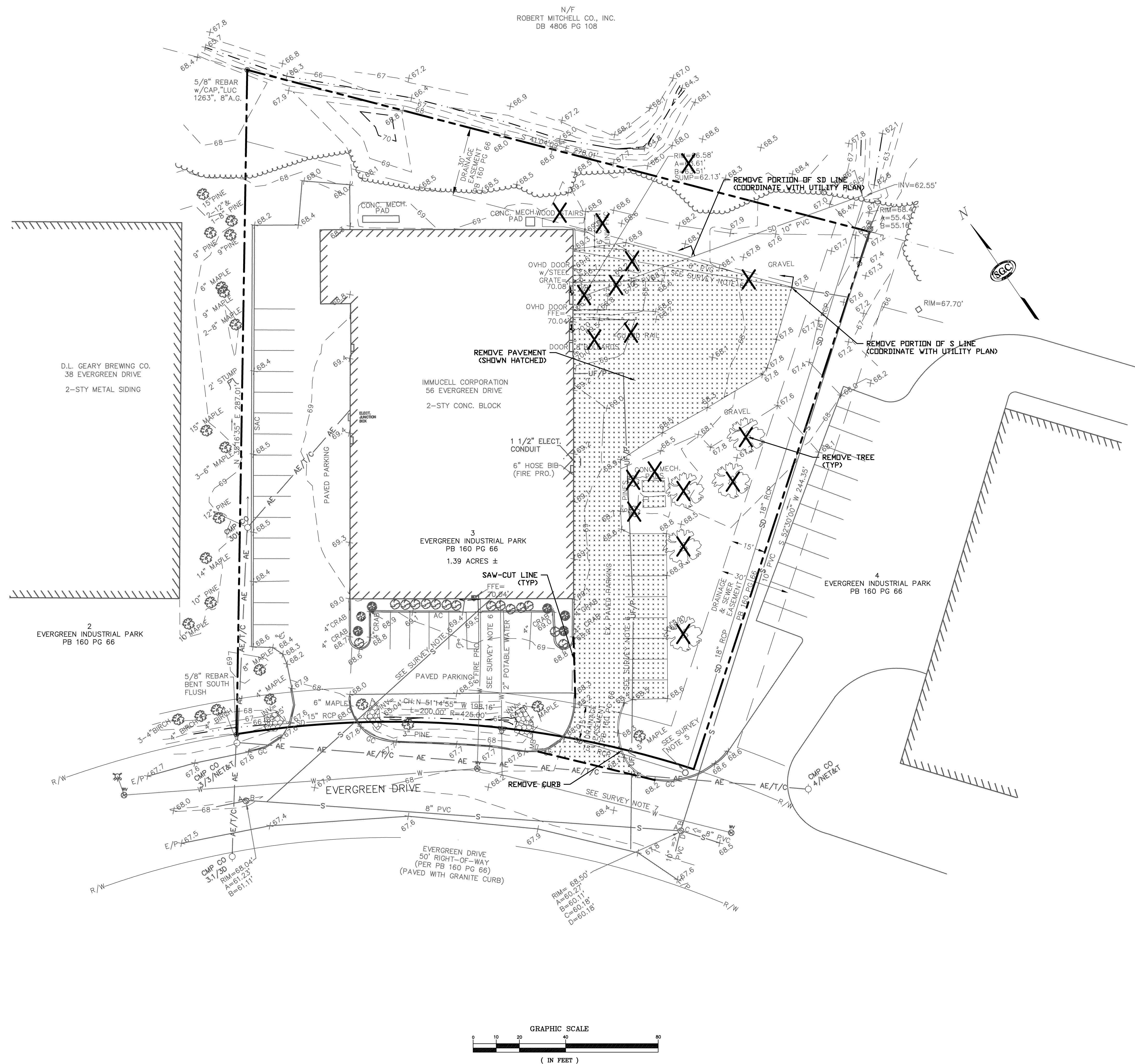
AUBURN PORTLAND MANCHESTER

IMMUCELL CORPORATION ADDITION

PORTLAND, MAINE

Harriman Project No. 14326

Key Plan



N/F
ROBERT MITCHELL CO., INC.
DB 4806 PG 108

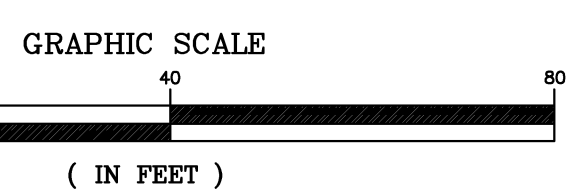
D.L. GEARY BREWING CO.
38 EVERGREEN DRIVE
2-STY METAL SIDING

2
EVERGREEN INDUSTRIAL PARK
PB 160 PG 66

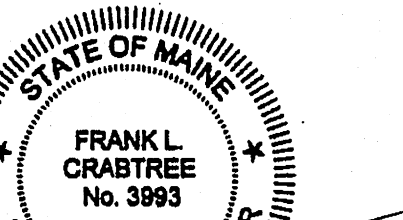
3
EVERGREEN INDUSTRIAL PARK
PB 160 PG 66
1.39 ACRES ±

4
EVERGREEN INDUSTRIAL PARK
PB 160 PG 66

EVERGREEN DRIVE
50' RIGHT-OF-WAY
(PER PB 160 PG 66)
(PAVED WITH GRANITE CURB)



Mark	Date	Description
	05-22-14	PLANNING BOARD REVIEW



PA/PE: FLC
Drawn By: PLS
© 2014
Harriman Associates

EXISTING SITE CONDITIONS AND DEMOLITION PLAN

C4