

DOOR & HARDWARE GENERAL NOTES

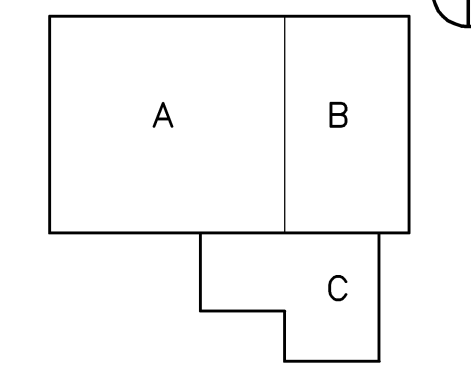
1. ALL METAL SKINS ON DOORS SHALL BE 18 GA.
2. ALL METAL DOOR FRAMES SHALL BE 16 GA.
3. MATCH EXISTING DOOR HARDWARE MANUFACTURER
4. KEY TO MATCH OWNERS EXISTING KEYING SYSTEM

CODE COMPLIANCE REQUIREMENTS	
BUILDING DESIGN CODES:	NUMBER OF STORIES:
AMERICANS WITH DISABILITIES ACT (ADA)	ACTUAL: 2
NFPA 101 LIFE SAFETY CODE / 2009	ALLOWABLE: 2 + SPRINKLER INCREASE
INTERNATIONAL BUILDING CODE / 2009	
MAINE UNIFORM BUILDING AND ENERGY CODE	BUILDING HEIGHT:
2009 UNIFORM PLUMBING CODE	ACTUAL: 23'-0"
INTERNATIONAL MECHANICAL CODE / 2009	
ASHRAE / IES STANDARD 90.1 - 2007	FIRE SUPPRESSION:
NFPA 70 NATIONAL ELECTRIC CODE / 2009	FULLY SPRINKLERED WITH SUPERVISED SYSTEM
BUILDING AREA:	TRAVEL DISTANCE:
ALLOWABLE (IBC)	200'-0" MAX (NFPA 101 & IBC)
GROUP B: BUSINESS = 23,000 SF	
GROUP F-1: INDUSTRIAL MODERATE = 15,500 SF	OCCUPANT LOADS:
B - SPRINKLER: 200% (23,000 X 2) = 46,000 SF	FIRST FLOOR: MANUFACTURING 200 GROSS - 18
F-1 SPRINKLER: 200% (15,500 X 2) = 31,000 SF	SECOND FLOOR: WAREHOUSE 500 GROSS - 6
TOTAL ALLOWABLE BUILDING AREA: 115, 500 SF	
BUILDING AREA - ACTUAL	
EXISTING FIRST FLOOR:	B - 6,706 SF
EXISTING FIRST FLOOR ADDITION:	F-1 - 8,770 SF
NEW FIRST FLOOR ADDITION:	F-1 - 3,659 SF
EXISTING SECOND FLOOR:	B - 5,146 SF
EXISTING SECOND FLOOR ADDITION:	F-1 - 8,078 SF
NEW SECOND FLOOR ADDITION:	F-1 - 3,659 SF
TOTAL BUILDING AREA:	36,018 SF
IBC:	
GROUP B: BUSINESS AND INDUSTRIAL	
GROUP F-1: FACTORY AND INDUSTRIAL	
MODERATE HAZARD	
CONSTRUCTION TYPE:	
IBC: TYPE IIB	
OCCUPANCY:	
NON-SEPARATED OCCUPANCY PER SECTION 508.3	



IMMUCELL CORPORATION ADDITION

PORTLAND, MAINE
 Harriman Project No. 14326
 Key Plan Proj North



Mark	Date	Description
-	03-31-14	REVIEW
-	05-22-2014	PLANNING BOARD REVIEW

PRELIMINARY NOT FOR CONSTRUCTION

PA / PE: DER © 2014
 Drawn By: DER Harriman Associates

FIRST FLOOR PLAN

A1