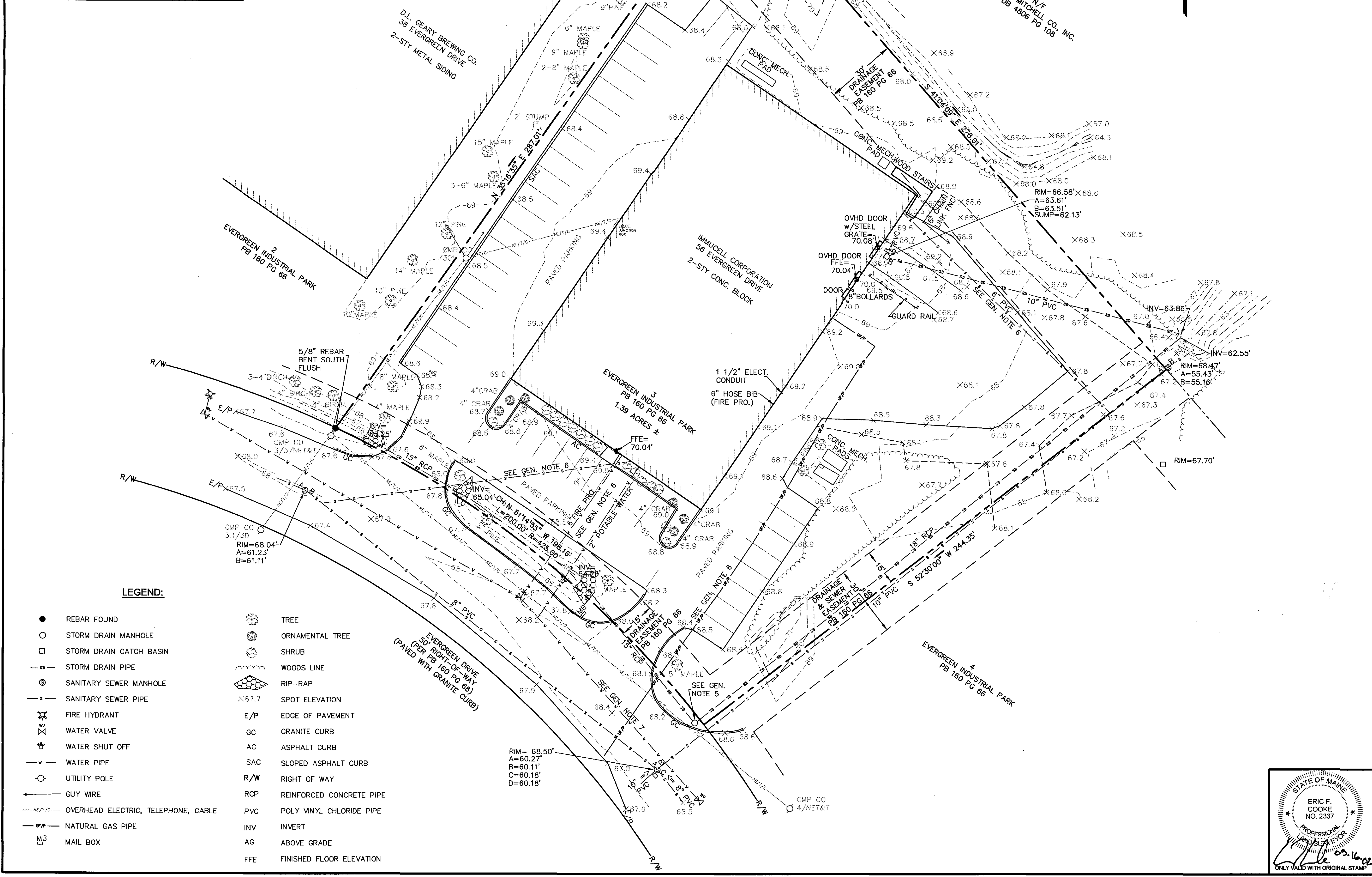


REVISIONS:		
NO.	DATE	APPROVED FOR SUBMITTAL
0	09/16/02	

- GENERAL NOTES:**
- 1) COMPILED BOUNDARY, TOPOGRAPHIC, AND PLANIMETRIC INFORMATION AS SHOWN HEREON IS REFERENCED HORIZONTALLY TO AN ASSUMED DATUM AND VERTICALLY TO NGVD 29 BASED UPON STATIC GPS OBSERVATIONS.
 - 2) NORTH AS SHOWN HEREON IS REFERENCED TO MAP REFERENCE 1.
 - 3) THIS PLAN AND ALL WORK ASSOCIATED WITH IT WAS PERFORMED BY SURVEY & GEODETIC CONSULTANTS, INC. PURSUANT TO A PROFESSIONAL SERVICES CONTRACT BETWEEN IMMUCELL CORPORATION AND SURVEY & GEODETIC CONSULTANTS, INC. DATED: AUGUST 29, 2002.
 - 4) COMPILED BOUNDARY, TOPOGRAPHIC, AND PLANIMETRIC INFORMATION AS SHOWN HEREON IS THE RESULT OF AN ON-THE-GROUND FIELD SURVEY PERFORMED BY SURVEY & GEODETIC CONSULTANTS, INC. BETWEEN SEPTEMBER 9 & 11, 2002.
 - 5) THIS STORM DRAIN MANHOLE WAS NOT FOUND IN THE FIELD AND ITS POSITION HAS BEEN COMPILED FROM MAP REFERENCE 2.
 - 6) SANITARY SEWER AND WATER LINES NOTED ARE BASED UPON FIELD LOCATED PAINT DELINEATION AND PAROL EVIDENCE BY LANGFORD & LOWELL AT THE TIME OF THE SURVEY. THE GAS LINE AS SHOWN HEREON IS BASED UPON FIELD LOCATED PAINT MARKS AS DELINEATED BY DIG-SAFE. PRIOR TO CONTRACTOR PERFORMING ANY WORK, DIG-SAFE SHOULD BE CONTACTED.
 - 7) THIS WATER LINE HAS BEEN BASED UPON SURFACE OBSERVED FIELD LOCATED FEATURES. THIS LINE WAS NOT DELINEATED BY DIG-SAFE.
 - 8) THE DETERMINATION OF EVERGREEN DRIVE AS AN ACCEPTED PUBLIC WAY WAS NOT PART OF THIS SCOPE OF SERVICES.
 - 9) NO DEFINITIVE BOUNDARY SURVEY HAS BEEN PERFORMED BY SURVEY & GEODETIC CONSULTANTS, INC. PROPERTY LINES AS SHOWN HEREON HAVE BEEN COMPILED USING MAP REFERENCE 1 AND FIELD LOCATED EVIDENCE AS SHOWN. EASEMENTS AND ADJOINERS HAVE BEEN SHOWN PER MAP REFERENCE 1 (NO RESEARCH HAS BEEN PERFORMED). THESE LINES SHOULD NOT BE RELIED UPON AS BOUNDARY LINES.



- MAP REFERENCES:**
- 1) "EVERGREEN INDUSTRIAL PARK, SECOND AMENDED SUBDIVISION PLAT," BY LAND USE CONSULTANTS, DATED: 2-3-87, RECORDED IN PLAN BOOK 160 PAGE 66.
 - 2) "ALTERATIONS TO IMMUCELL CORP., COMPOSITE SITE PLAN," BY DAVID D. LEASURE-ARCHITECTURAL ASSOCIATES, INC., REVISED DATED: NOV. 1, 2000.

TITLE:
COMPILED BOUNDARY & TOPOGRAPHIC SURVEY
 LOT 3, EVERGREEN INDUSTRIAL PARK
 56 EVERGREEN DRIVE
 PLAN BOOK 160 PAGE 66
 CITY OF PORTLAND CUMBERLAND COUNTY
 STATE OF MAINE
PREPARED FOR:
 IMMUCELL CORPORATION
 56 EVERGREEN DRIVE
 PORTLAND, MAINE 04103

12 Westbrook Commons, 2nd Floor
Westbrook, Maine 04092
Phone: 207-856-0006 • Fax: 207-856-0007
E-Mail: sgc@sgcinc.net

ERIC F. COOKE
NO. 2337

SCALE: 1" = 20'

DATE: 09/16/02	DRAWN: CGD	JOB NO.: 1-000159.00
COMPILED/DESIGN: CGD	CHECK: EFC	DWG NO.: 1-159A.DWG

SHEET 1 OF 1

K:\SURVEY\work\proj\1-000159.dwg - 159C.dwg, 09/17/2002 12:13:11 PM, Copyright (C) Survey & Geodetic Consultants, Inc. Copyright (C) Survey & Geodetic Consultants, Inc.