

HARRIMAN

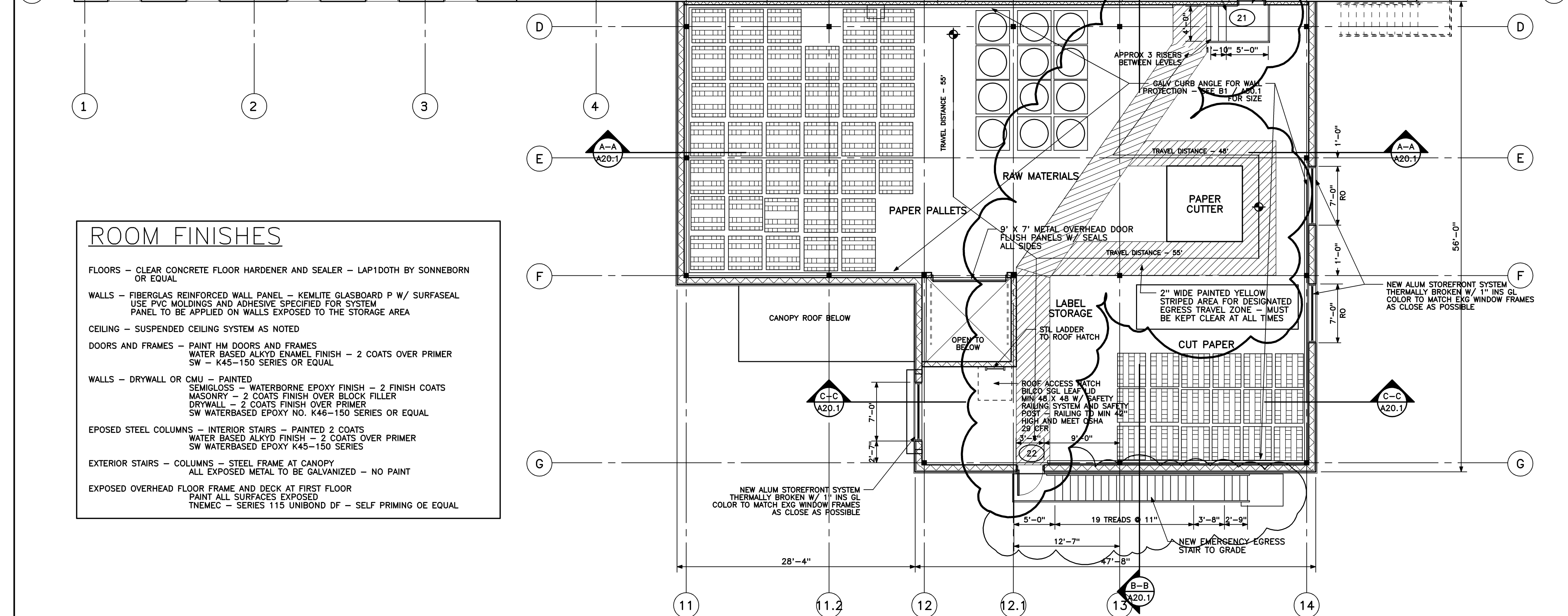
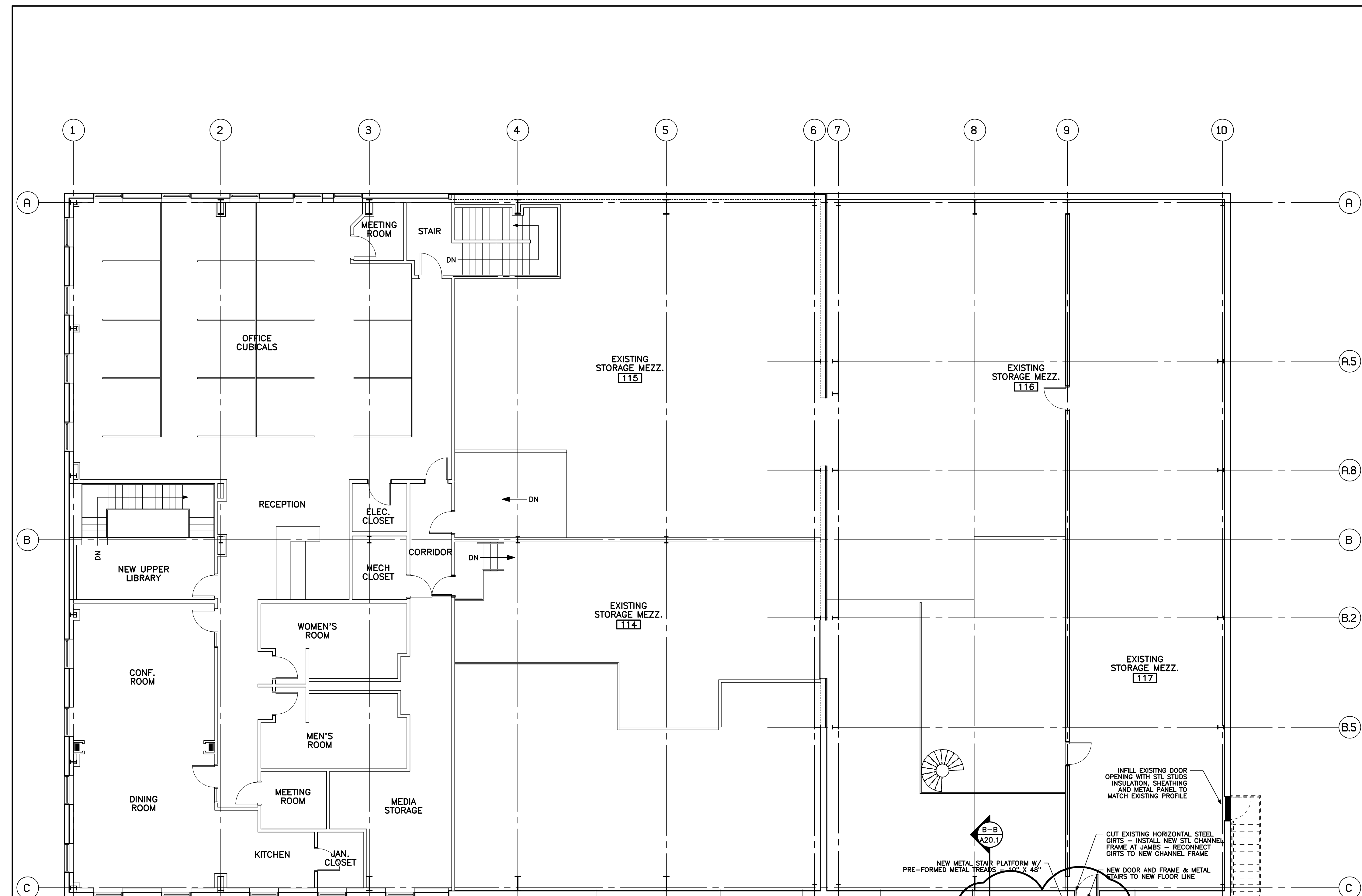
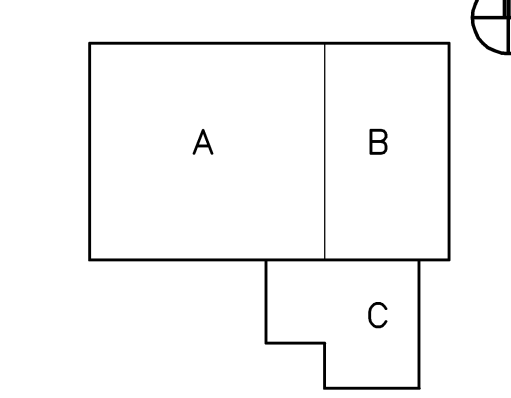
AUBURN PORTLAND MANCHESTER

IMMUCELL CORPORATION ADDITION

PORTLAND, MAINE

Harriman Project No. 14326

Key Plan Proj North



**ROOM FINISHES**

FLOORS - CLEAR CONCRETE FLOOR HARDENER AND SEALER - LAP100TH BY SONNEBORN OR EQUAL

WALLS - FIBERGLAS REINFORCED WALL PANEL - KEMLITE GLASBOARD P W/ SURFSEAL USE PVC MOLDINGS AND ADHESIVE SPECIFIED FOR SYSTEM PANEL TO BE APPLIED ON WALLS EXPOSED TO THE STORAGE AREA

CEILING - SUSPENDED CEILING SYSTEM AS NOTED

DOORS AND FRAMES - PAINT HM DOORS AND FRAMES WATER BASED ALKYD ENAMEL FINISH - 2 COATS OVER PRIMER SW - K45-150 SERIES OR EQUAL

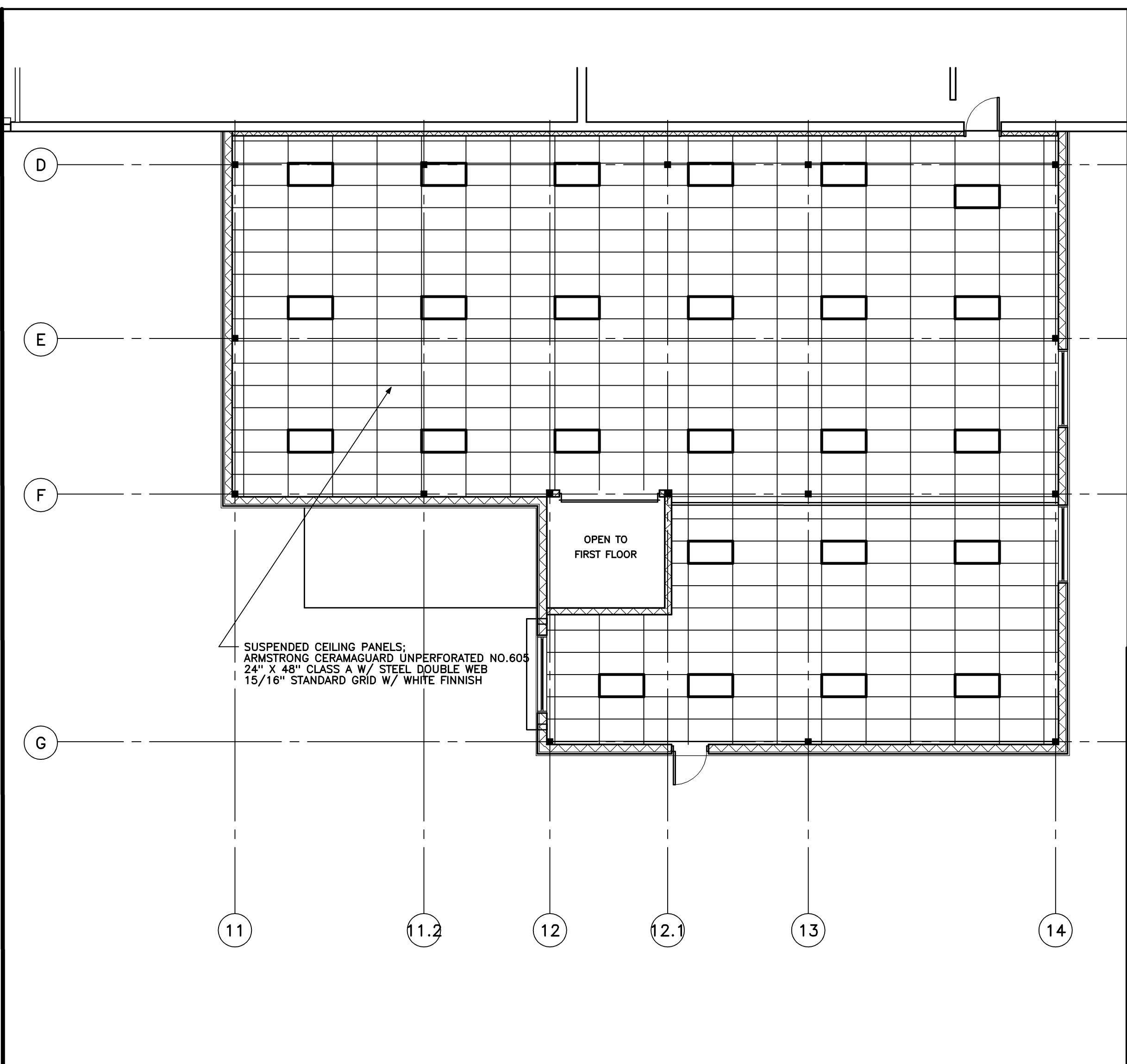
WALLS - DRYWALL OR CMU - PAINTED SEMIGLOSS - WATERBORNE EPOXY FINISH - 2 FINISH COATS MASONRY - 2 COATS FINISH OVER BLOCK FILLER DRYWALL - 2 COATS FINISH OVER PRIMER SW WATERBASED EPOXY NO. K46-150 SERIES OR EQUAL

EXPOSED STEEL COLUMNS - INTERIOR STAIRS - PAINTED 2 COATS WATER BASED ALKYD FINISH - 2 COATS OVER PRIMER SW WATERBASED EPOXY K45-150 SERIES

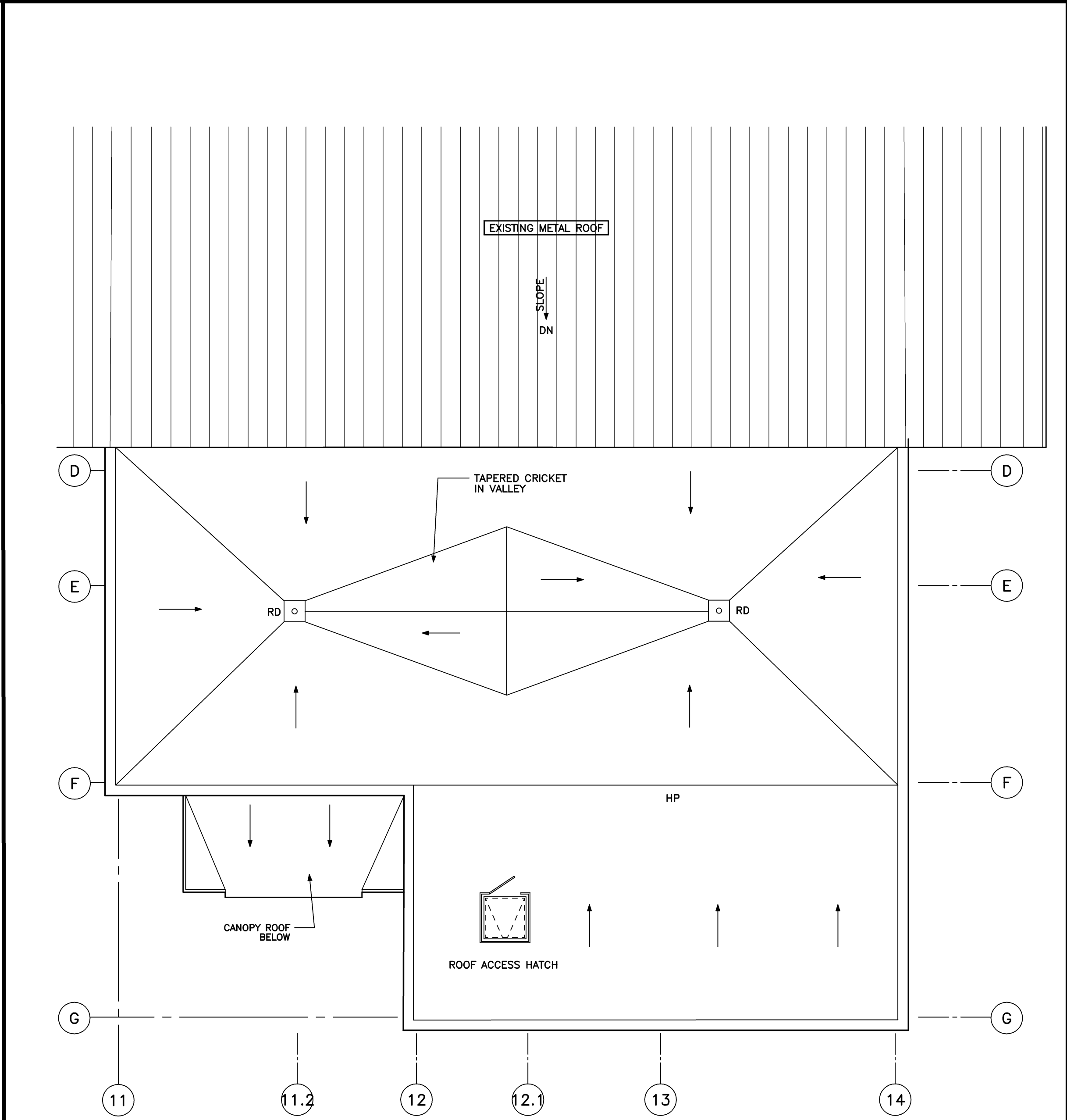
EXTERIOR STAIRS - COLUMNS - STEEL FRAME AT CANOPY ALL EXPOSED METAL TO BE GALVANIZED - NO PAINT

EXPOSED OVERHEAD FLOOR FRAME AND DECK AT FIRST FLOOR PAINT ALL SURFACES EXPOSED TNEMC - SERIES 115 UNIBOND DF - SELF PRIMING OE EQUAL

SECOND FLOOR PLAN 1/8" = 1'-0" REF: NA A3

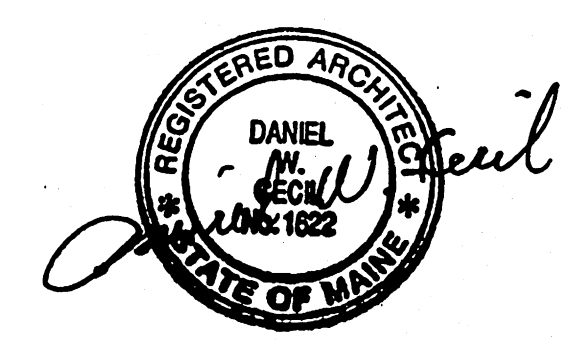


SECOND FLOOR REFLECTIVE CEILING 1 1/2" = 1'-0" REF: NA C1



ROOF PLAN 1/8" = 1'-0" REF: NA A1

Mark	Date	Description
-	03-31-14	REVIEW
-	05-22-14	PLANNING BOARD REVIEW
-	08-27-14	FINAL REVIEW
-	07-25-14	ISSUED FOR CONSTRUCTION



PA / PE: DER © 2014 Harriman Associates Drawn By: DER

SECOND FLOOR PLAN

A10.2