

ROOM FINISHES

FLOORS - CLEAR CONCRETE FLOOR HARDENER AND SEALER - LAP10TH BY SONNEBORN OR EQUAL

WALLS - FIBERGLAS REINFORCED WALL PANEL - KEMLITE GLASSBOARD P W/ SURFASAL USE PVC MOLDINGS AND ADHESIVE SPECIFIED FOR SYSTEM PANEL TO BE APPLIED ON WALLS EXPOSED TO THE STORAGE AREA

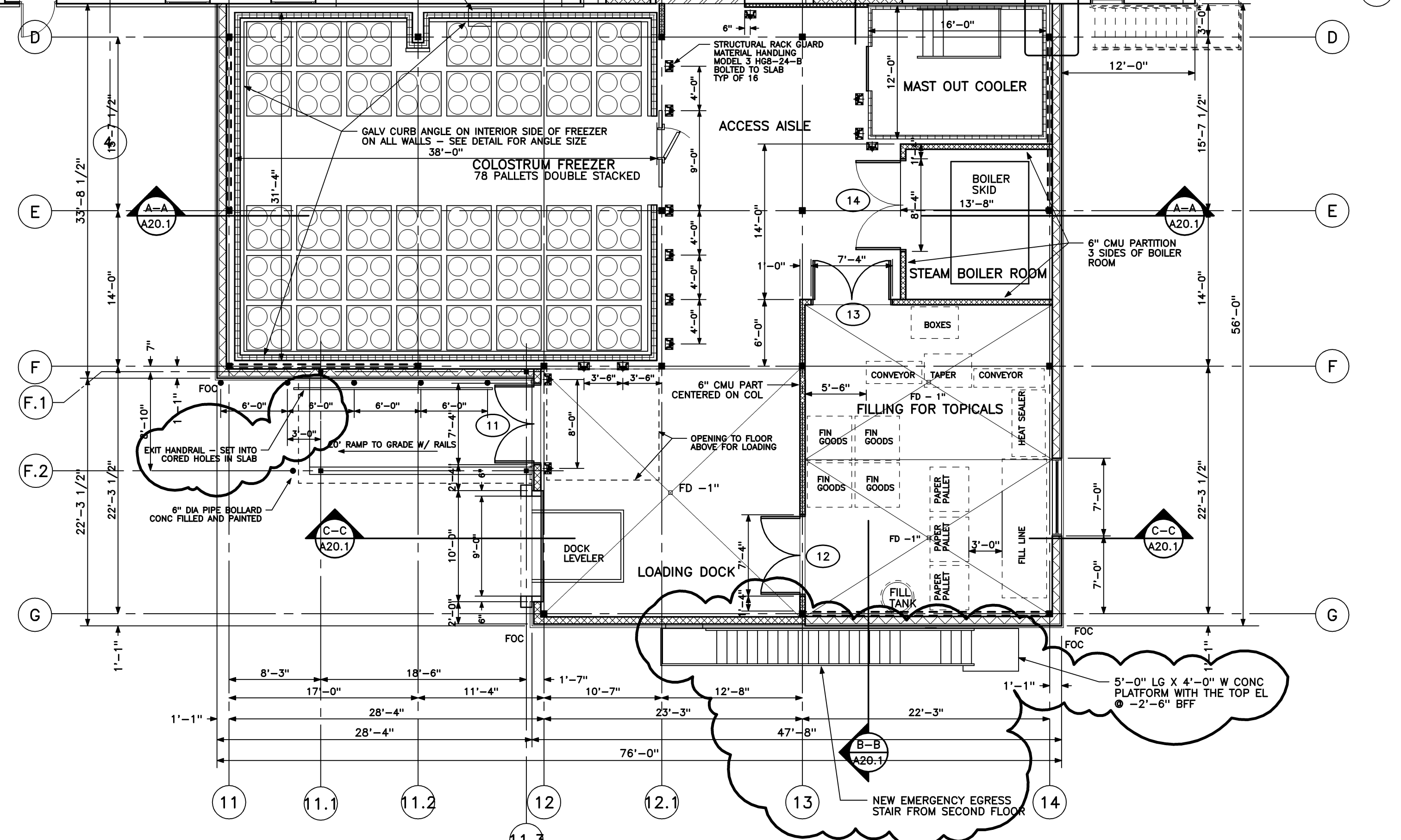
CEILING - SUSPENDED CEILING SYSTEM AS NOTED

DOORS AND FRAMES - PAINT HM DOORS AND FRAMES WATER BASED ALKYD ENAMEL FINISH - 2 COATS OVER PRIMER SW - K45-150 SERIES OR EQUAL

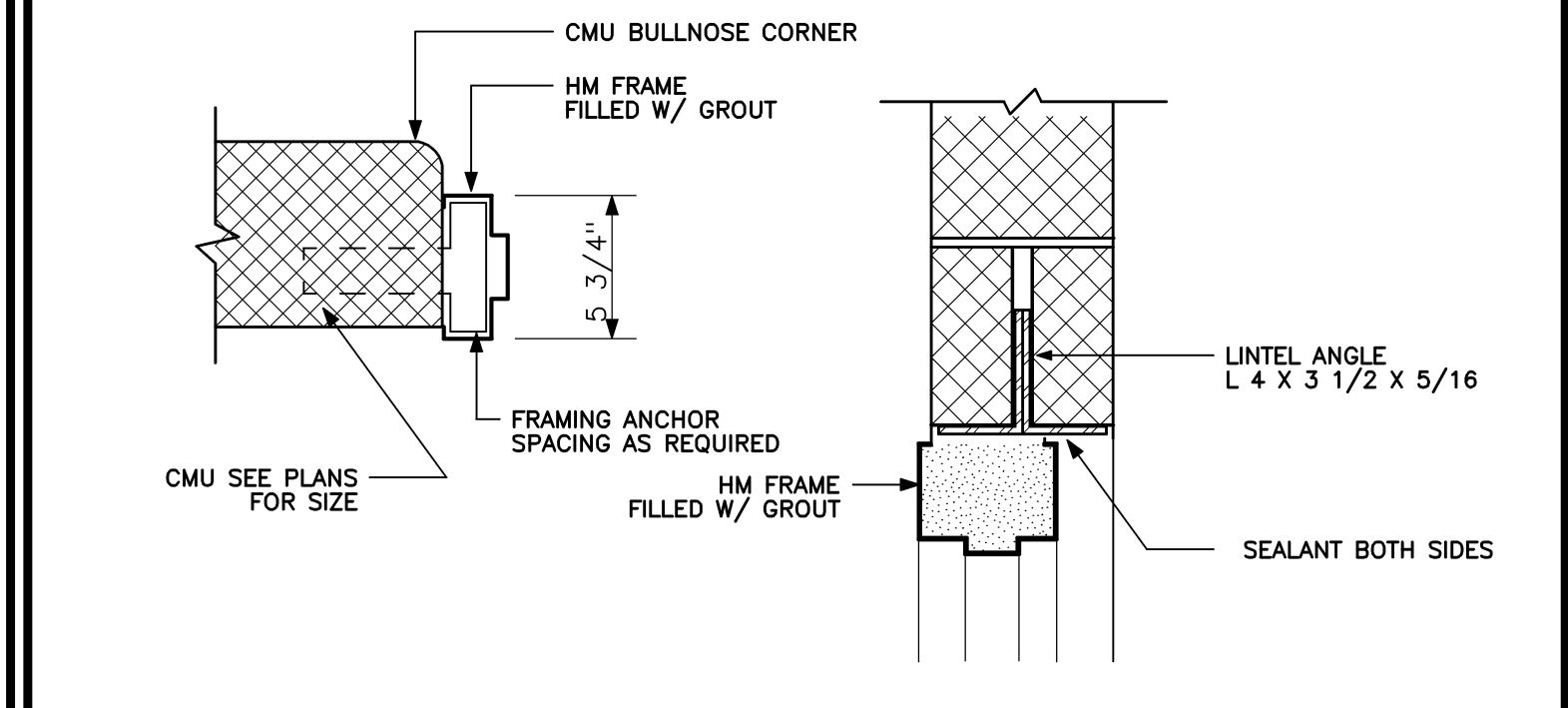
WALLS - DRYWALL OR CMU - PAINTED SEMI-GLOSS - WATERBORNE EPOXY FINISH - 2 FINISH COATS MASONRY - 2 COATS FINISH OVER BLOCK FILLER DRYWALL - 2 COATS FINISH OVER PRIMER SW WATERBASED EPOXY NO. K45-150 SERIES OR EQUAL

EPOSED STEEL COLUMNS - INTERIOR STAIRS - PAINTED 2 COATS WATER BASED ALKYD FINISH - 2 COATS OVER PRIMER SW WATERBASED EPOXY K45-150 SERIES

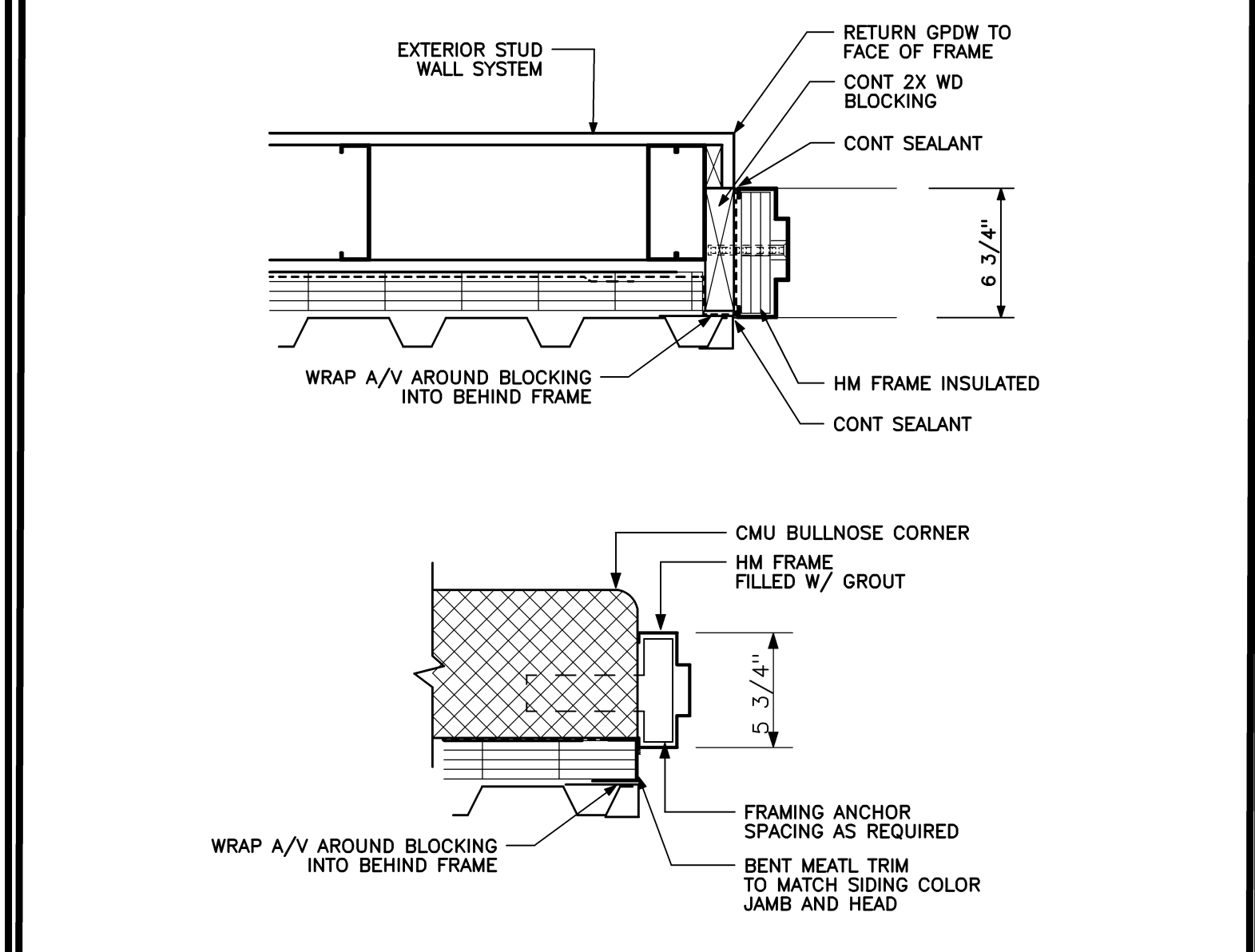
EXTERIOR STAIRS - COLUMNS - STEEL FRAME AT CANOPY ALL EXPOSED METAL TO BE GALVANIZED - NO PAINT EXPOSED OVERHEAD FLOOR FRAME AND DOCK AT FIRST FLOOR PAINT ALL SURFACES EXPOSED TNEMC - SERIES 115 UNIBOND DF - SELF PRIMING OE EQUAL



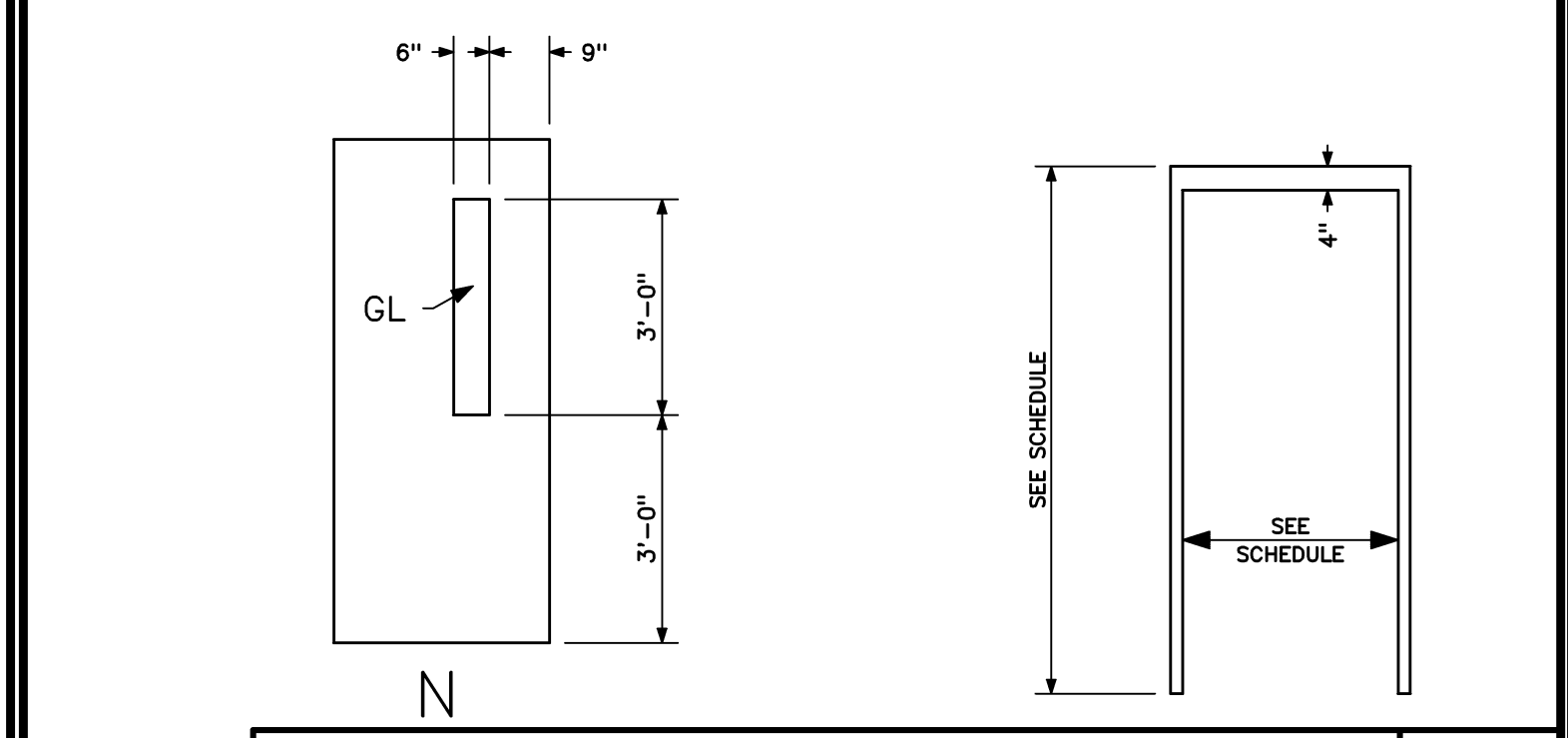
6" CMU WALL - DOOR FRAME DETAIL
1 1/2" = 1'-0" REF: NA



8" CMU WALL - DOOR FRAME DETAIL
1 1/2" = 1'-0" REF: A60.1, A60.2, A60.3



EXTERIOR WALL - DOOR FRAME JAMB DETAILS
1 1/2" = 1'-0" REF: A60.1, A60.2, A60.3



DOORS AND FRAMES
NTS REF: NA

CODE COMPLIANCE REQUIREMENTS

BUILDING DESIGN CODES:
AMERICANS WITH DISABILITIES ACT (ADA)
NFPA 101 LIFE SAFETY CODE / 2009
INTERNATIONAL BUILDING CODE / 2009
MAINE UNIFORM BUILDING AND ENERGY CODE
2009 UNIFORM PLUMBING CODE
INTERNATIONAL MECHANICAL CODE / 2009
ASHRAE /IES STANDARD 90.1-2007
NFPA 70 NATIONAL ELECTRIC CODE / 2009

NUMBER OF STORIES:
ACTUAL : 2
ALLOWABLE: 2 + SPRINKLER INCREASE

BUILDING HEIGHT:
ACTUAL : 23'-0"
EIRE SUPPRESSION:
FULLY SPRINKLERED WITH SUPERVISED SYSTEM

TRAVEL DISTANCE:
250'-0" W/ SPRINKLER

OCCUPANT LOADS:
FIRST FLOOR: MANUFACTURING 200 GROSS - 18
SECOND FLOOR: WAREHOUSE 500 GROSS - 4
(ACTUAL) - 2

BUILDING AREA - ACTUAL

ALLOWABLE (IBC)
GROUP B BUSINESS - 23,000 SF
GROUP F-1 INDUSTRIAL MODERATE - 15,500 SF
TOTAL ALLOWABLE BUILDING AREA: 115, 500 SF

EXISTING FIRST FLOOR: F-1 - 8,770 SF
NEW FIRST FLOOR ADDITION: F-1 - 3,659 SF

EXISTING SECOND FLOOR: B - 5,146 SF
NEW SECOND FLOOR ADDITION: S-1 - 3,558 GROSS SF
TOTAL BUILDING AREA: 36,018 SF

CONSTRUCTION TYPE:
IBC: TYPE IIB

OCCUPANCY:
NON-SEPARATED OCCUPANCY PER SECTION 508.3

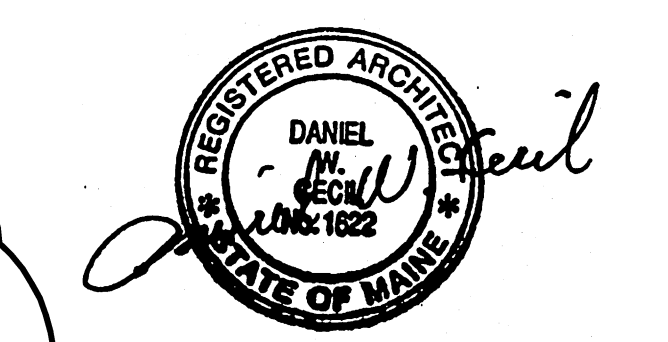
- DOOR & HARDWARE GENERAL NOTES**
1. ALL HM DOORS TO MIN 16 GA.
 2. ALL HM FRAMES TO BE MIN 16 GA.
 3. ALL HM DOORS AND FRAME STD GALVANIZED
 4. ALL NEW PAIRS OF DOORS TO ACTIVE 1 LEAF W/ FLUSH BOLTS ON INACTIVE LEAF
 5. DOORS #11, 13, 14 TO HAVE CLOSERS W/ HOLD-OPEN ARMS
 6. DOOR #22 TO BE EXIT ONLY - NO HARDWARE ON EXTERIOR SIDE
 7. ALL EXTERIOR DOORS TO WEATHERSTRIPPED
 8. DOOR HARDWARE TO MATCH CURRENT SYSTEM - KEY CYLINDERS TO MATCH OWNERS MASTER

No.	DOOR				FRAME				FIRE RATING	REMARKS				
	SIZE	MAT	TYPE	GLASS	LOUVER	MAT	TYPE	HEAD			JAMB	SILL		
11	2'-3"-6"	8'-0"	1 3/4"	HM	N	TEMP	-	HM	1	B1	C1	-	-	-
12	2'-3"-6"	7'-0"	1 3/4"	HM	N	TEMP	-	HM	1	C1	C1	-	-	-
13	2'-3"-6"	7'-0"	1 3/4"	HM	N	TEMP	-	HM	1	D1	D1	-	-	-
14	2'-4'-0"	8'-0"	1 3/4"	HM	F	-	-	HM	1	D1	D1	-	-	-
21	3'-0"	6'-6"	1 3/4"	HM	N	TEMP	-	HM	1	-	-	-	-	DRYWALL FRAME - 5 7/8"
22	3'-0"	7'-0"	1 3/4"	HM	F	-	-	HM	1	B1	B1	-	-	EMERGENCY EGRESS ONLY

FIRST FLOOR PLAN
1/8" = 1'-0" REF: NA

Issue or Revisions

Mark	Date	Description
-	03-31-14	REVIEW
-	05-22-14	PLANNING BOARD REVIEW
-	08-27-14	FINAL REVIEW
-	07-25-14	ISSUED FOR CONSTRUCTION



PA / PE: DER
Drawn By: DER
© 2014 Harriman Associates

FIRST FLOOR PLAN