



**HARRIMAN**

AUBURN PORTLAND MANCHESTER

**IMMUCELL CORPORATION ADDITION**

PORTLAND, MAINE

Harriman Project No. 14326

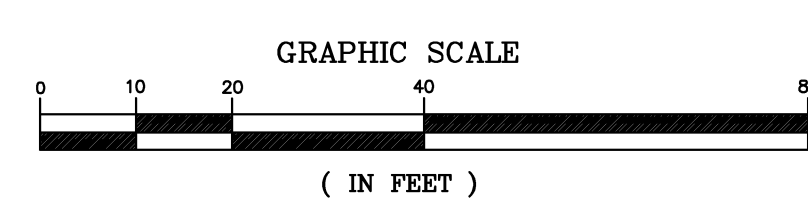
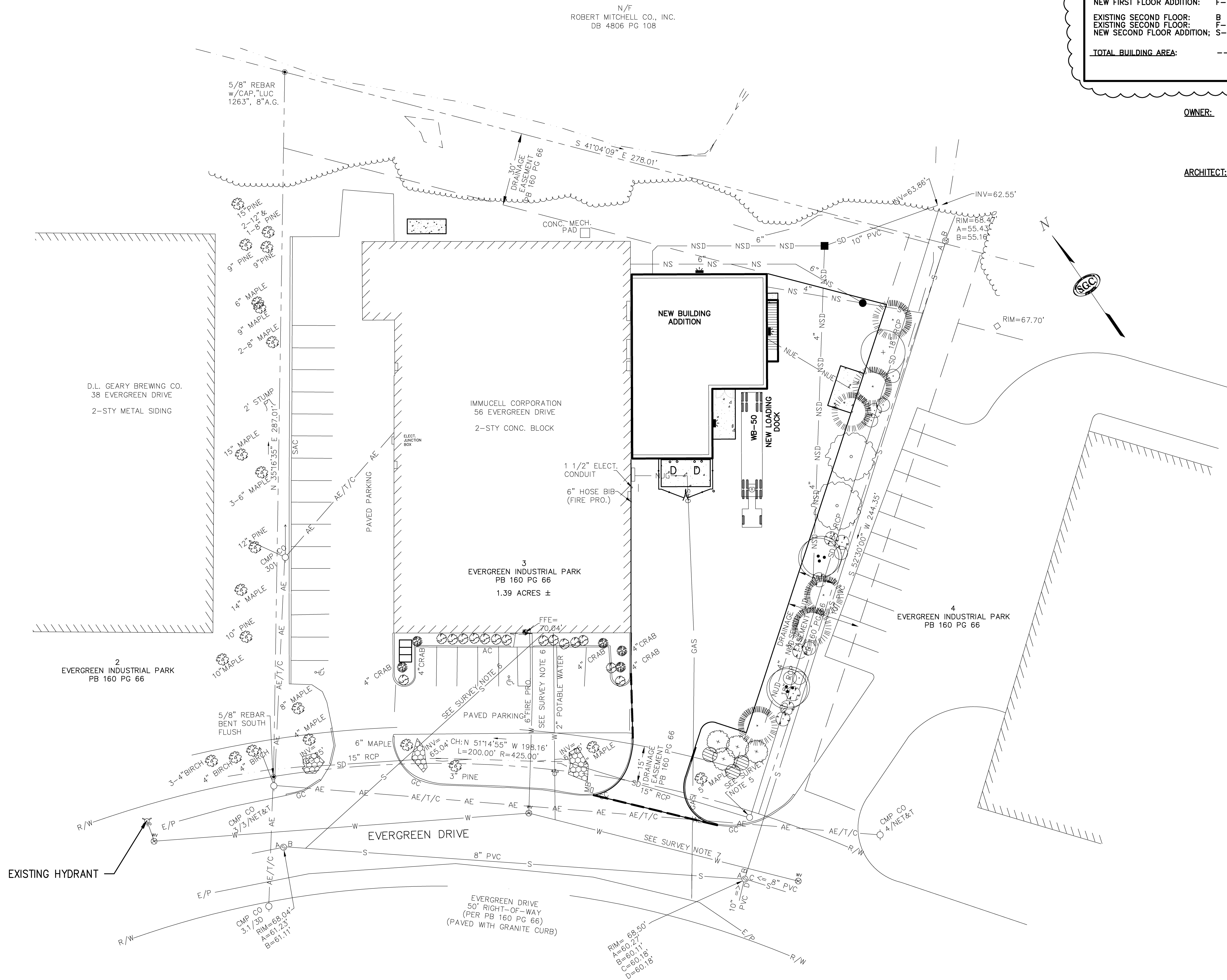
Key Plan

**CODE COMPLIANCE REQUIREMENTS**

<b>BUILDING DESIGN CODES:</b> AMERICANS WITH DISABILITIES ACT (ADA) NFPA 101 LIFE SAFETY CODE / 2009 INTERNATIONAL BUILDING CODE / 2009 MAINE UNIFORM BUILDING AND ENERGY CODE 2009 UNIFORM PLUMBING CODE INTERNATIONAL MECHANICAL CODE / 2009 ASHRAE / IES STANDARD 90.1 - 2007 NFPA 70 NATIONAL ELECTRIC CODE / 2009	<b>NUMBER OF STORIES:</b> ACTUAL : 2 ALLOWABLE: 2 + SPRINKLER INCREASE
<b>BUILDING AREA:</b> ALLOWABLE (IBC) GROUP B: BUSINESS - 23,000 SF GROUP F-1: INDUSTRIAL MODERATE - 15,500 SF B - SPRINKLER: 200% (23,000 X 2) = 46,000 SF F-1 SPRINKLER: 200% (15,500 X 2) = 31,000 SF TOTAL ALLOWABLE BUILDING AREA: 115, 500 SF	<b>BUILDING HEIGHT:</b> ACTUAL : 23'-0" <b>FIRE SUPPRESSION:</b> FULLY SPRINKLERED WITH SUPERVISED SYSTEM
<b>EXISTING FIRST FLOOR:</b> B - 6,706 SF <b>EXISTING SECOND FLOOR:</b> B - 5,146 SF <b>EXISTING FIRST FLOOR ADDITION:</b> F-1 - 8,770 SF <b>NEW FIRST FLOOR ADDITION:</b> F-1 - 3,659 SF <b>EXISTING SECOND FLOOR:</b> B - 5,146 SF <b>EXISTING SECOND FLOOR ADDITION:</b> S-1 - 3,559 GROSS SF <b>NEW SECOND FLOOR ADDITION:</b> S-1 - 2,059 NET SF <b>TOTAL BUILDING AREA:</b> -- 36,018 SF	<b>TRAVEL DISTANCE:</b> 250'-0" W/ SPRINKLER <b>OCCUPANT LOADS:</b> FIRST FLOOR: MANUFACTURING 200 GROSS - 18 SECOND FLOOR: WAREHOUSE 500 GROSS - 4 (ACTUAL) - 2 <b>IBC:</b> GROUP B: BUSINESS GROUP F-1: FACTORY AND INDUSTRIAL MODERATE HAZARD GROUP S-1: MODERATE HAZARD <b>CONSTRUCTION TYPE:</b> IBC: TYPE IIB <b>OCCUPANCY</b> NON-SEPARATED OCCUPANCY PER SECTION 508.3

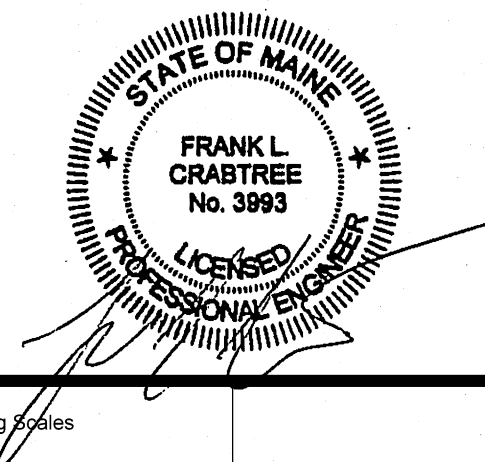
**OWNER:** IMMUCELL CORPORATION  
56 EVERGREEN DRIVE  
PORTLAND, MAINE 04103  
CONTACT: MICHAEL BRIGHAM  
TEL. (207) 878-2770

**ARCHITECT:** HARRIMAN  
46 HARRIMAN DRIVE  
AUBURN, MAINE 04210  
CONTACT: DAN ROBBINS  
TEL. (207) 784-5100



Issues and Revisions

Mark	Date	Description
	05-22-14	PLANNING BOARD REVIEW
	07-10-14	PLANNING AUTHORITY APPROVAL
	07-25-14	ISSUED FOR CONSTRUCTION



PA/PE: FLC  
Drawn By: PLS  
© 2014  
Harriman Associates

**FIRE DEPARTMENT PLAN**

**F1**