

HARRIMAN

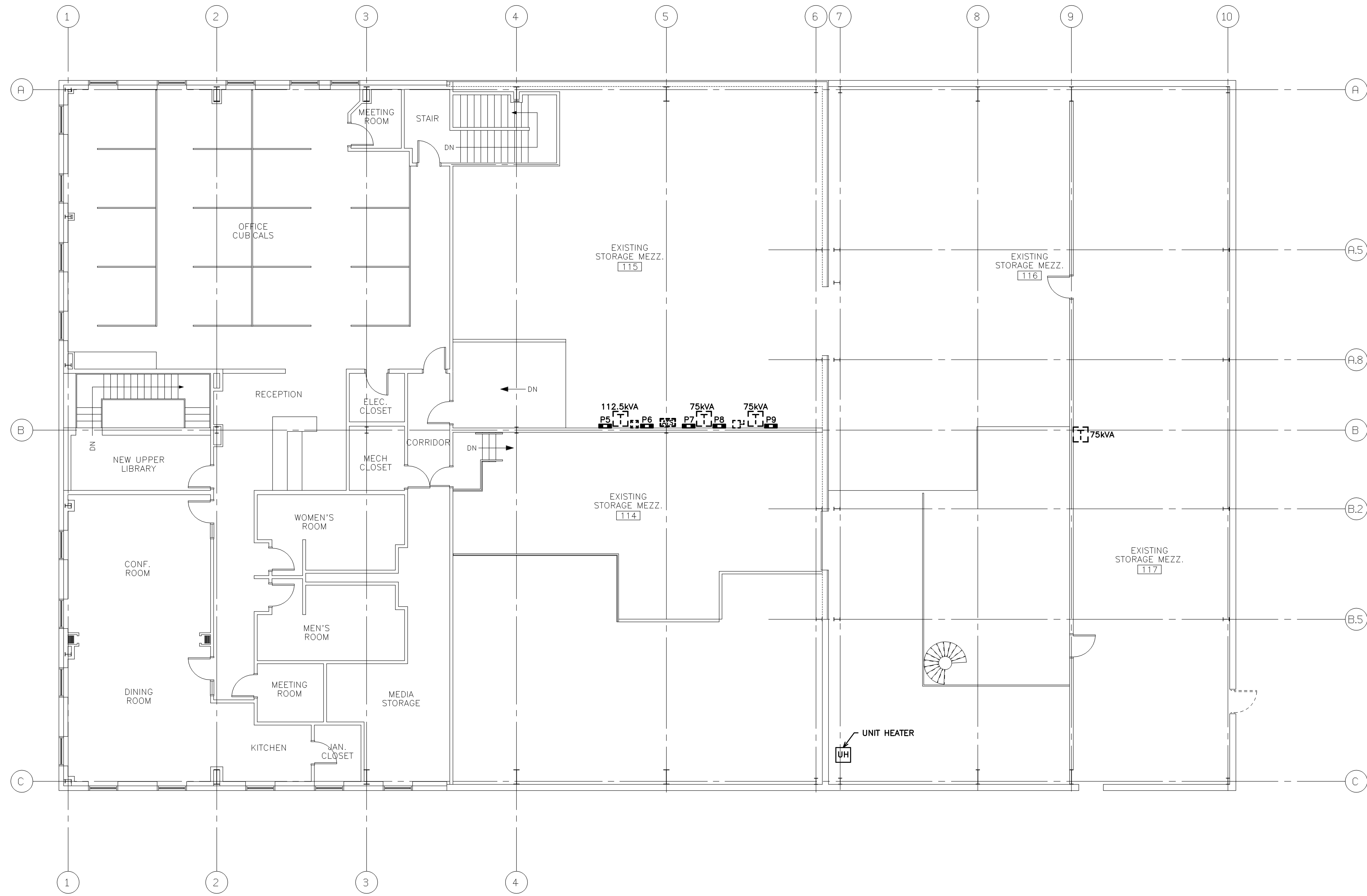
AUBURN PORTLAND MANCHESTER

IMMUCELL CORPORATION ADDITION

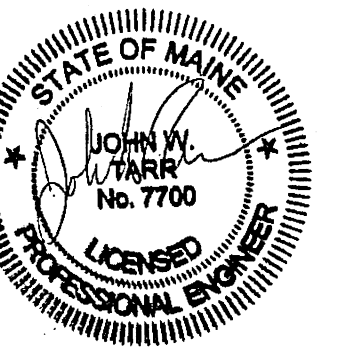
PORTLAND, MAINE

Harriman Project No. 14326

Key Plan Proj North



Issue or Revisions		
Mark	Date	Description
-	07-01-14	PROGRESS
-	07-25-14	ISSUED FOR CONSTRUCTION



PA / PE: **JWT** © 2014
Drawn By: **BSO** Harriman Associates

ELECTRICAL SECOND FLOOR EXISTING CONDITIONS PLAN

E05.2