

ROOM FINISHES

FLOORS - CLEAR CONCRETE FLOOR HARDENER AND SEALER - LAP10TH BY SONNEBORN OR EQUAL

WALLS - FIBERGLAS REINFORCED WALL PANEL - KEMLITE GLASSBOARD P W/ SURFASAL USE PVC MOLDINGS AND ADHESIVE SPECIFIED FOR SYSTEM PANEL TO BE APPLIED ON WALLS EXPOSED TO THE STORAGE AREA

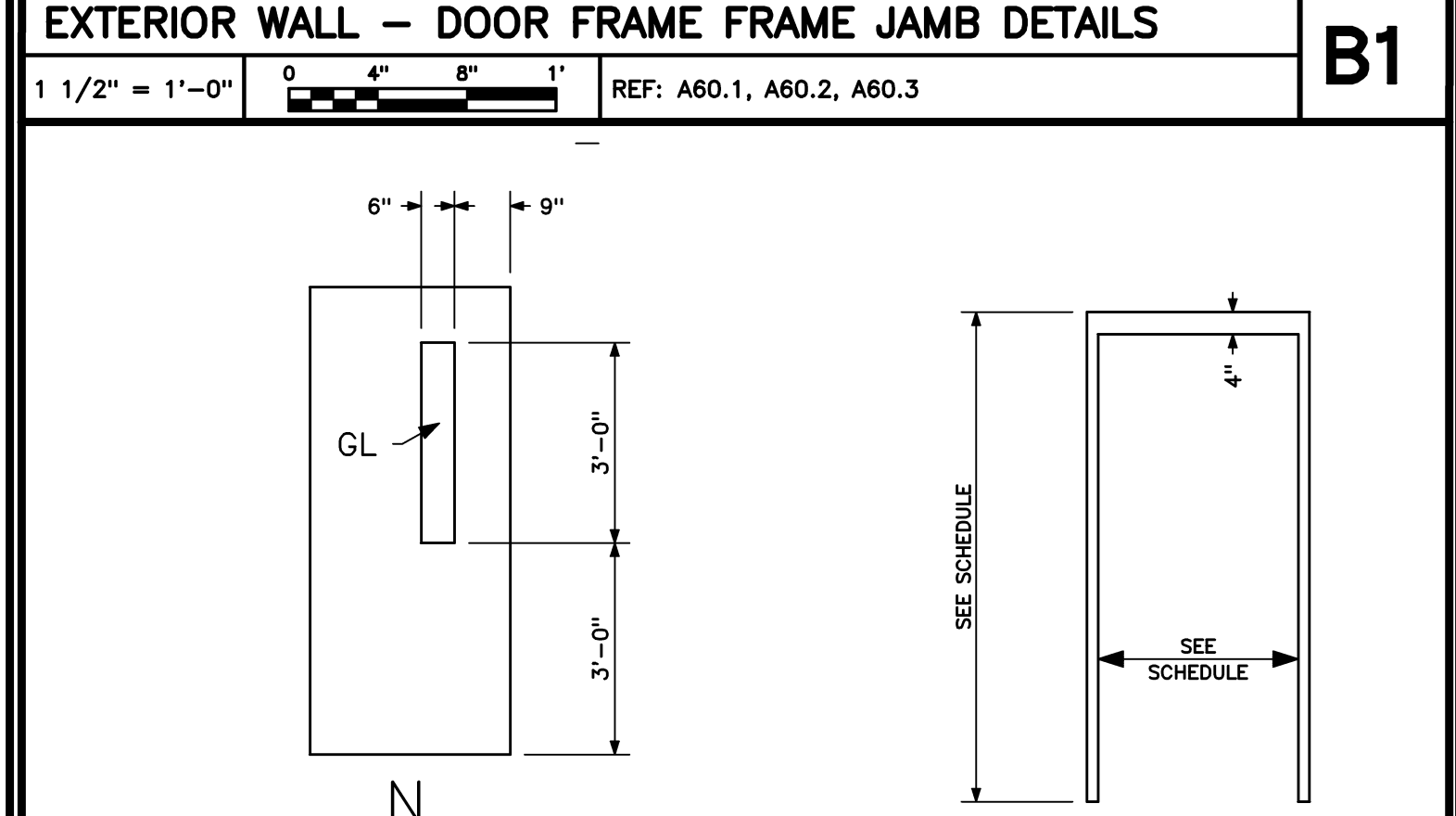
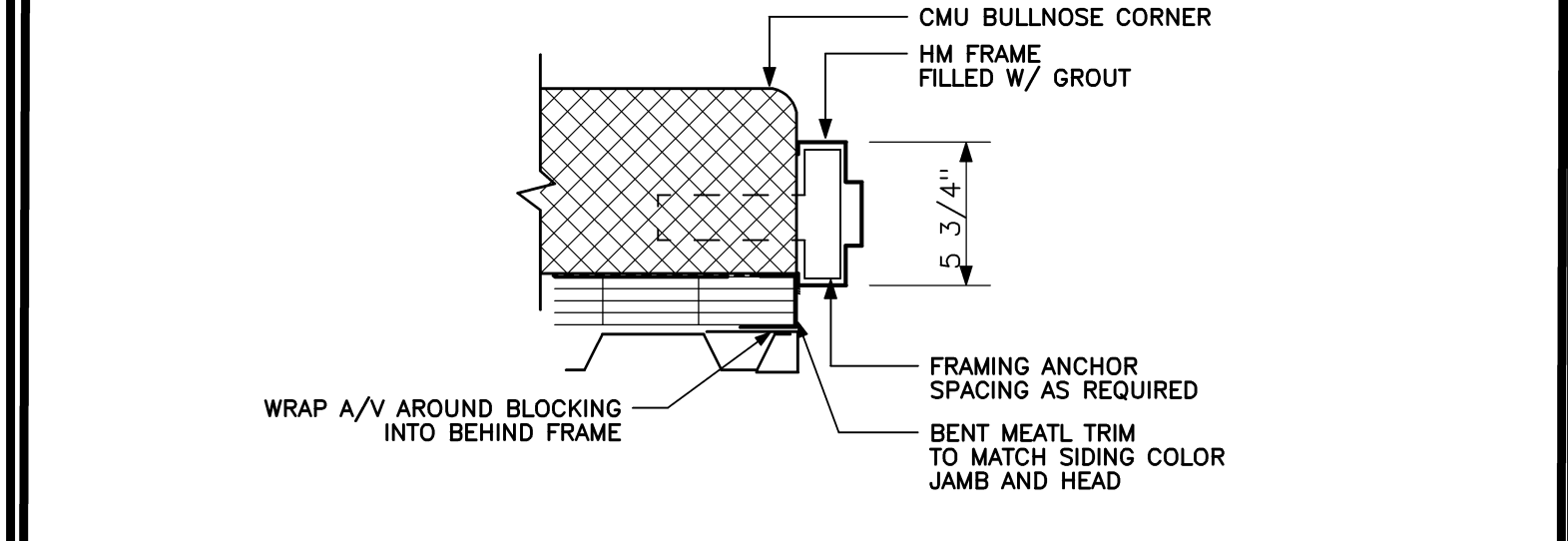
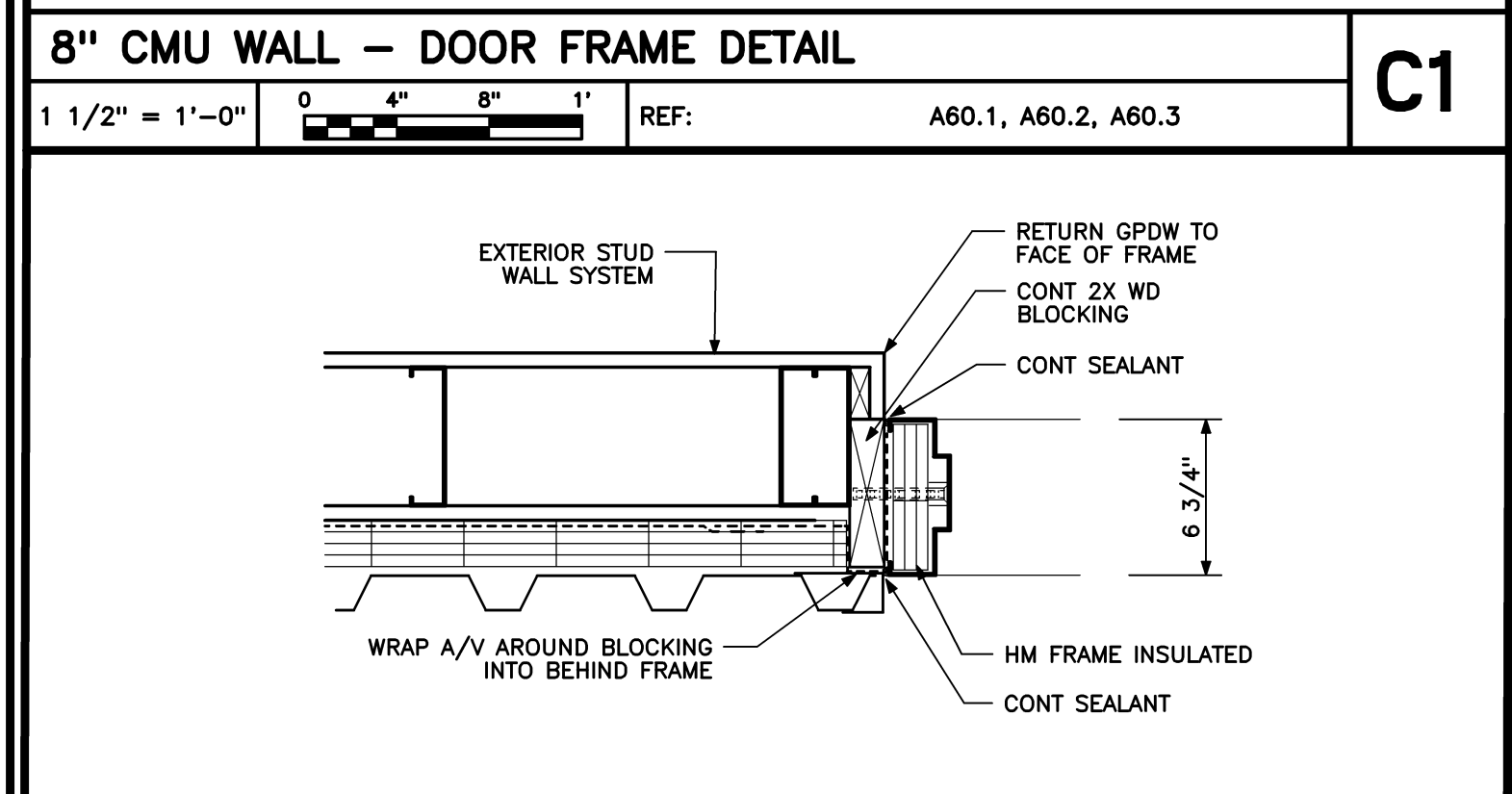
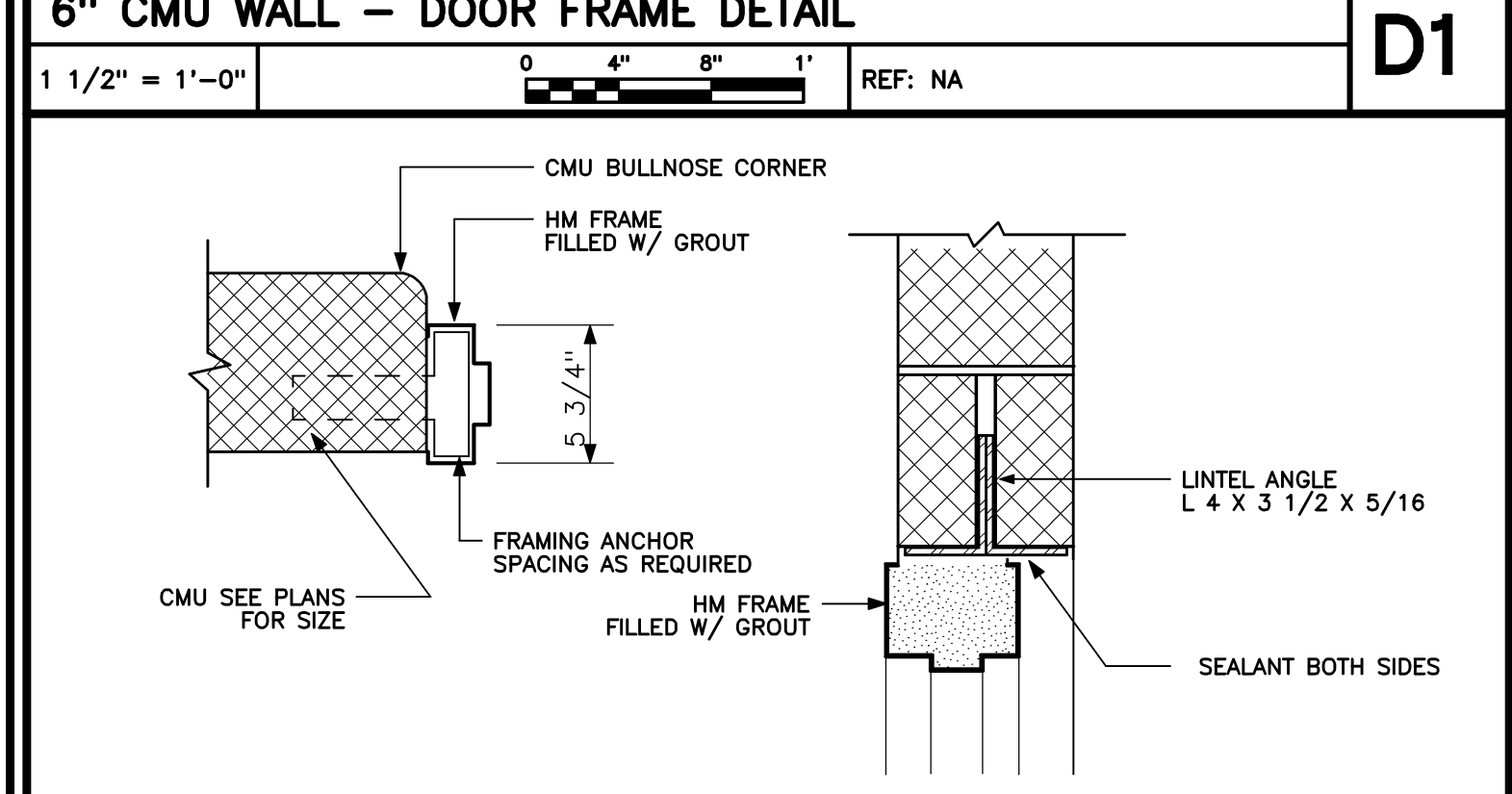
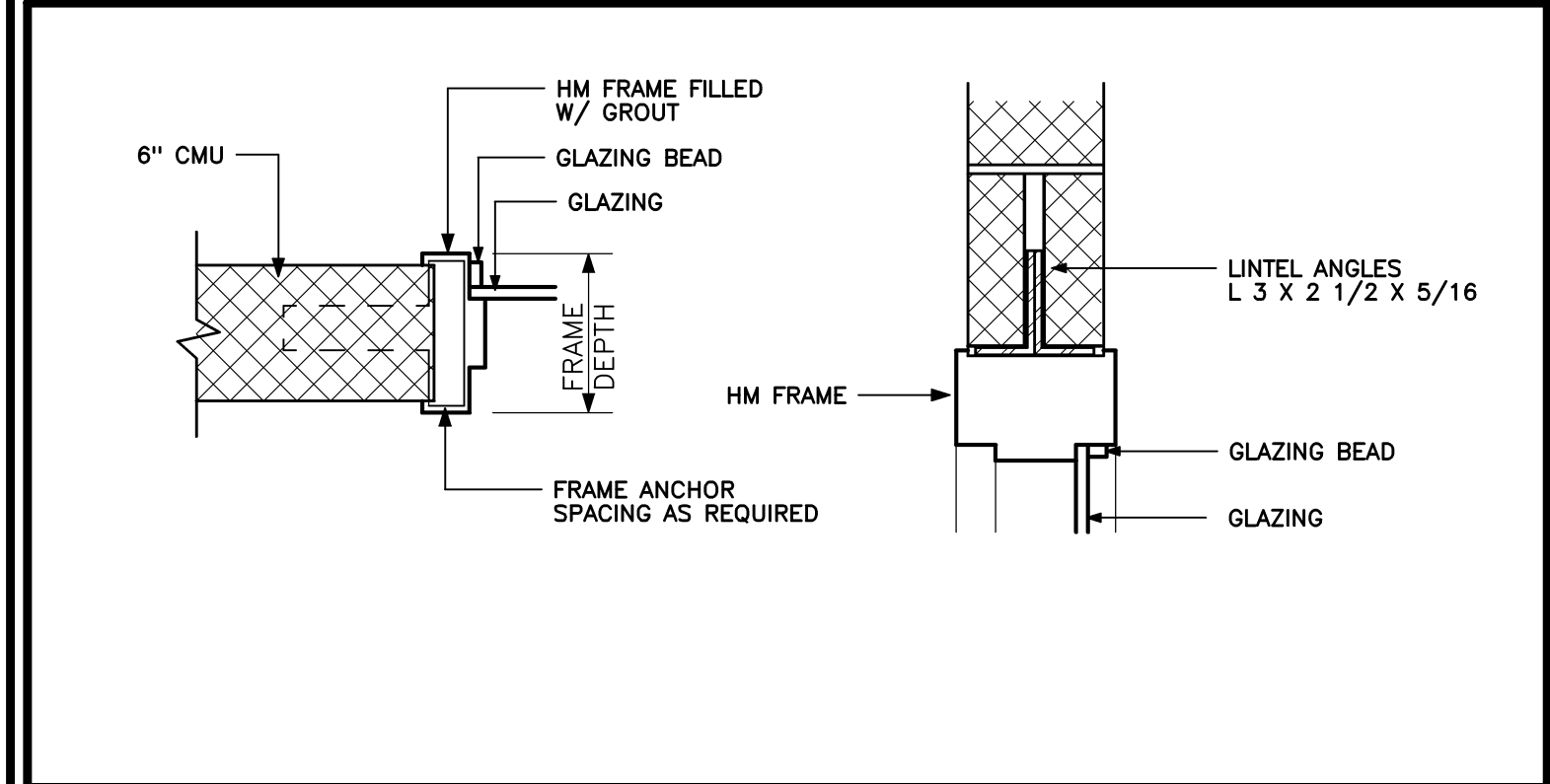
CEILING - SUSPENDED CEILING SYSTEM AS NOTED

DOORS AND FRAMES - PAINT HM DOORS AND FRAMES WATER BASED ALKYD ENAMEL FINISH - 2 COATS OVER PRIMER SW - K45-150 SERIES OR EQUAL

WALLS - DRYWALL OR CMU - PAINTED SEMI-GLOSS - WATERBORNE EPOXY FINISH - 2 FINISH COATS MASONRY - 2 COATS FINISH OVER BLOCK FILLER DRYWALL - 2 COATS FINISH OVER PRIMER SW WATERBASED EPOXY NO. K45-150 SERIES OR EQUAL

EPOSED STEEL COLUMNS - INTERIOR STAIRS - PAINTED 2 COATS WATER BASED ALKYD FINISH - 2 COATS OVER PRIMER SW WATERBASED EPOXY K45-150 SERIES

EXTERIOR STAIRS - COLUMNS - STEEL FRAME AT CANOPY ALL EXPOSED METAL TO BE GALVANIZED - NO PAINT EXPOSED OVERHEAD FLOOR FRAME AND DOCK AT FIRST FLOOR PAINT ALL SURFACES EXPOSED TNEMC - SERIES 115 UNIBOND DF - SELF PRIMING OE EQUAL



CODE COMPLIANCE REQUIREMENTS

BUILDING DESIGN CODES:
AMERICANS WITH DISABILITIES ACT (ADA)
NFPA 101 LIFE SAFETY CODE / 2009
INTERNATIONAL BUILDING CODE / 2009
MAINE UNIFORM BUILDING AND ENERGY CODE
2009 UNIFORM PLUMBING CODE
INTERNATIONAL MECHANICAL CODE / 2009
ASHRAE /IES STANDARD 90.1 - 2007
NFPA 70 NATIONAL ELECTRIC CODE / 2009

NUMBER OF STORIES:
ACTUAL : 2
ALLOWABLE: 2 + SPRINKLER INCREASE

BUILDING HEIGHT:
ACTUAL : 23'-0"

FIRE SUPPRESSION:
FULLY SPRINKLERED WITH SUPERVISED SYSTEM

TRAVEL DISTANCE:
200'-0" MAX (NFPA 101 & IBC)

OCCUPANT LOADS:
FIRST FLOOR: MANUFACTURING 200 GROSS - 18
SECOND FLOOR: WAREHOUSE 500 GROSS - 6

BUILDING AREA:
ALLOWABLE (IBC)
GROUP B: BUSINESS - 23,000 SF
GROUP F-1: INDUSTRIAL, MODERATE - 15,500 SF
B - SPRINKLER: 200% (23,000 X 2) = 46,000 SF
F-1 SPRINKLER: 200% (15,500 X 2) = 31,000 SF
TOTAL ALLOWABLE BUILDING AREA: 115, 500 SF

BUILDING AREA - ACTUAL

EXISTING FIRST FLOOR: B = 6,706 SF
EXISTING FIRST FLOOR: F-1 = 8,770 SF
NEW FIRST FLOOR ADDITION: F-1 = 3,659 SF

EXISTING SECOND FLOOR: B = 5,146 SF
EXISTING SECOND FLOOR: F-1 = 8,078 SF
NEW SECOND FLOOR ADDITION: F-1 = 3,659 SF
TOTAL BUILDING AREA: 36,018 SF

CONSTRUCTION TYPE:
IBC: TYPE IIB

OCCUPANCY:
NON-SEPARATED OCCUPANCY PER SECTION 508.3

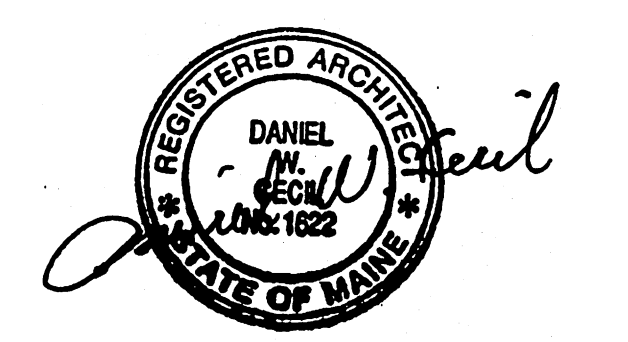
- DOOR & HARDWARE GENERAL NOTES**
- ALL HM DOORS TO MIN 16 GA.
 - ALL HM FRAMES TO BE MIN 16 GA.
 - ALL HM DOORS AND FRAME STD GALVANIZED
 - ALL NEW PAIRS OF DOORS TO ACTIVE 1 LEAF W/ FLUSH BOLTS ON INACTIVE LEAF
 - DOORS #11, 13, 14 TO HAVE CLOSERS W/ HOLD-OPEN ARMS
 - DOOR #22 TO BE EXIT ONLY - NO HARDWARE ON EXTERIOR SIDE
 - ALL EXTERIOR DOORS TO WEATHERSTRIPPED
 - DOOR HARDWARE TO MATCH CURRENT SYSTEM - KEY CYLINDERS TO MATCH OWNERS MASTER

No.	DOOR			FRAME			FIRE RATING	REMARKS					
	SIZE	MAT	TYPE	GLASS	LOUVER	MAT			TYPE				
	W	H	T		W	H	HEAD	JAMB	SILL				
11	2'-3"-6"	8'-0"	1 3/4"	HM	N	TEMP		HM	1	B1	C1		
12	2'-3"-6"	7'-0"	1 3/4"	HM	N	TEMP		HM	1	C1	C1		
13	2'-3"-6"	7'-0"	1 3/4"	HM	N	TEMP		HM	1	D1	D1		
14	2'-4'-0"	8'-0"	1 3/4"	HM	F			HM	1	D1	D1		
21	3'-0"	6'-6"	1 3/4"	HM	N	TEMP		HM	1				DRYWALL FRAME - 5 7/8"
22	3'-0"	7'-0"	1 3/4"	HM	F			HM	1	B1	B1		EMERGENCY EGRESS ONLY

FIRST FLOOR PLAN
1/8" = 1'-0" REF: NA **A2**

Issue or Revisions

Mark	Date	Description
-	03-31-14	REVIEW
-	05-22-14	PLANNING BOARD REVIEW
-	08-27-14	FINAL REVIEW
-	07-25-14	ISSUED FOR CONSTRUCTION



PA / PE: DER
Drawn By: DER
© 2014 Harriman Associates

FIRST FLOOR PLAN