

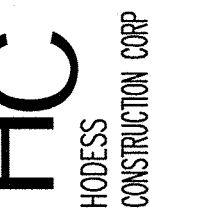
**NOTE:**

- SEE SHEET E-001 FOR LEGEND AND GENERAL NOTES.

**KEYED NOTE:**

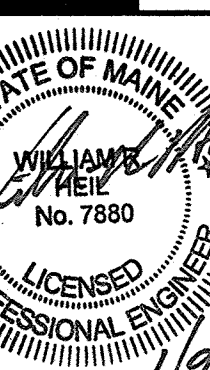
- REINSTALL FIXTURE REMOVED UNDER DEMOLITION WORK. CONNECT TO EXISTING CIRCUIT.
- CONTROL EXISTING FIXTURE WITH NEW SWITCH.
- ADJUST HEIGHT OF EXISTING EXIT SIGN TO 7" AFF TO CENTER TO ACCOMMODATE NEW CEILING. SPLICE AND EXTEND CONDUIT AND CONDUCTORS AS NEEDED.

Hodess Construction Corp  
100 John L. Diederich Sq.  
600 Alderboro  
508-685-1100 (P) 508-685-3101 (F)

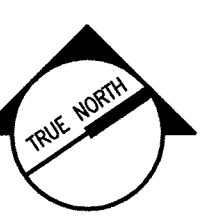


ARCHITECTURE  
ENGINEERING  
PLANNING  
INTERIOR DESIGN  
COMMISSIONING

SMRI  
144 Fore Street  
P.O. Box 618  
Portland, Maine 04104  
Tel: (207) 772-3846  
Fax: (207) 772-1070  
www.smriinc.com



PROJECT NORTH



TRUE NORTH

IMMUCELL CORPORATION  
CLEANROOM RENOVATION  
PORTLAND, ME  
ISSUED FOR PERMIT  
1-9-14  
CURRENT ISSUE STATUS:

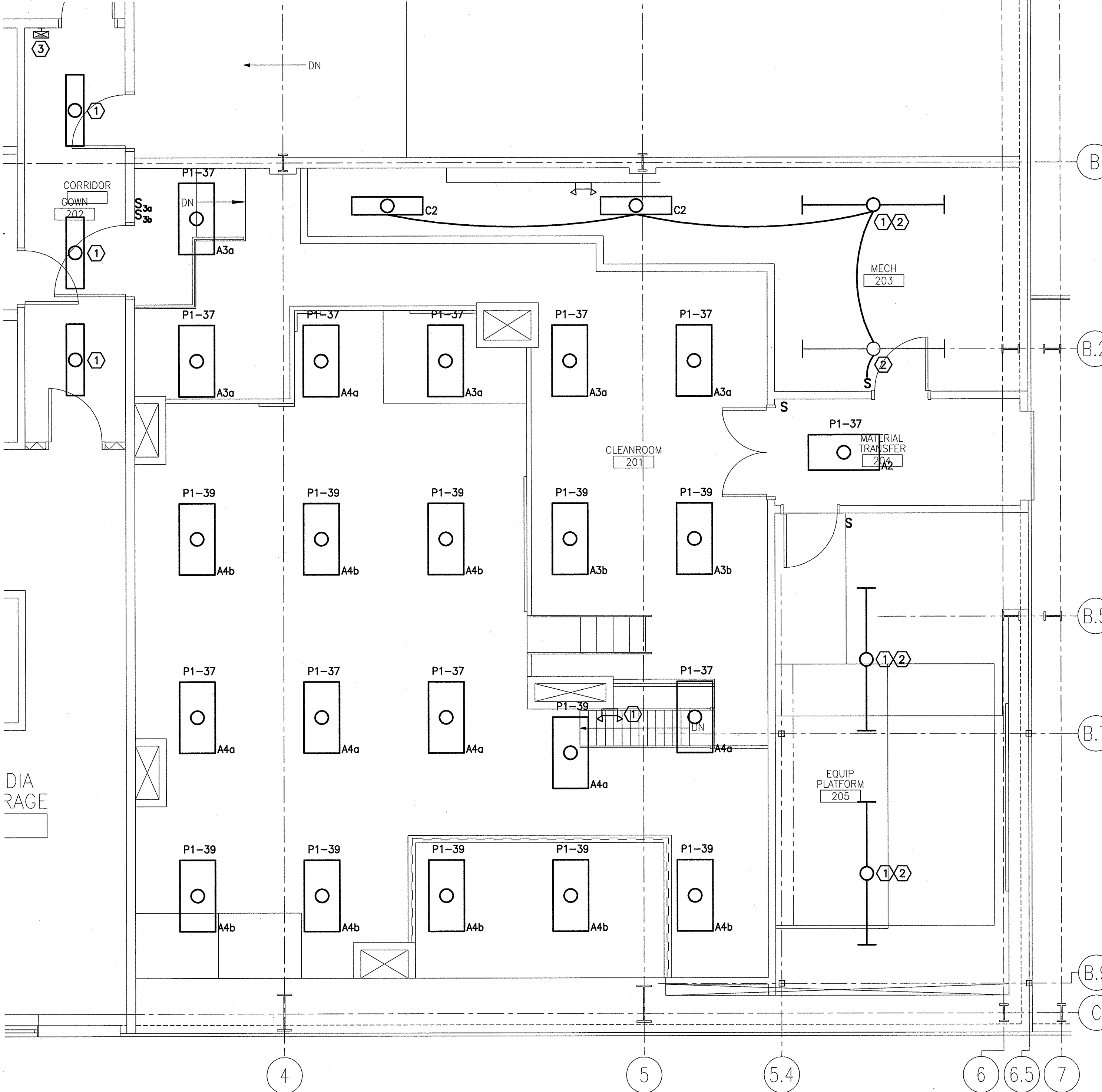
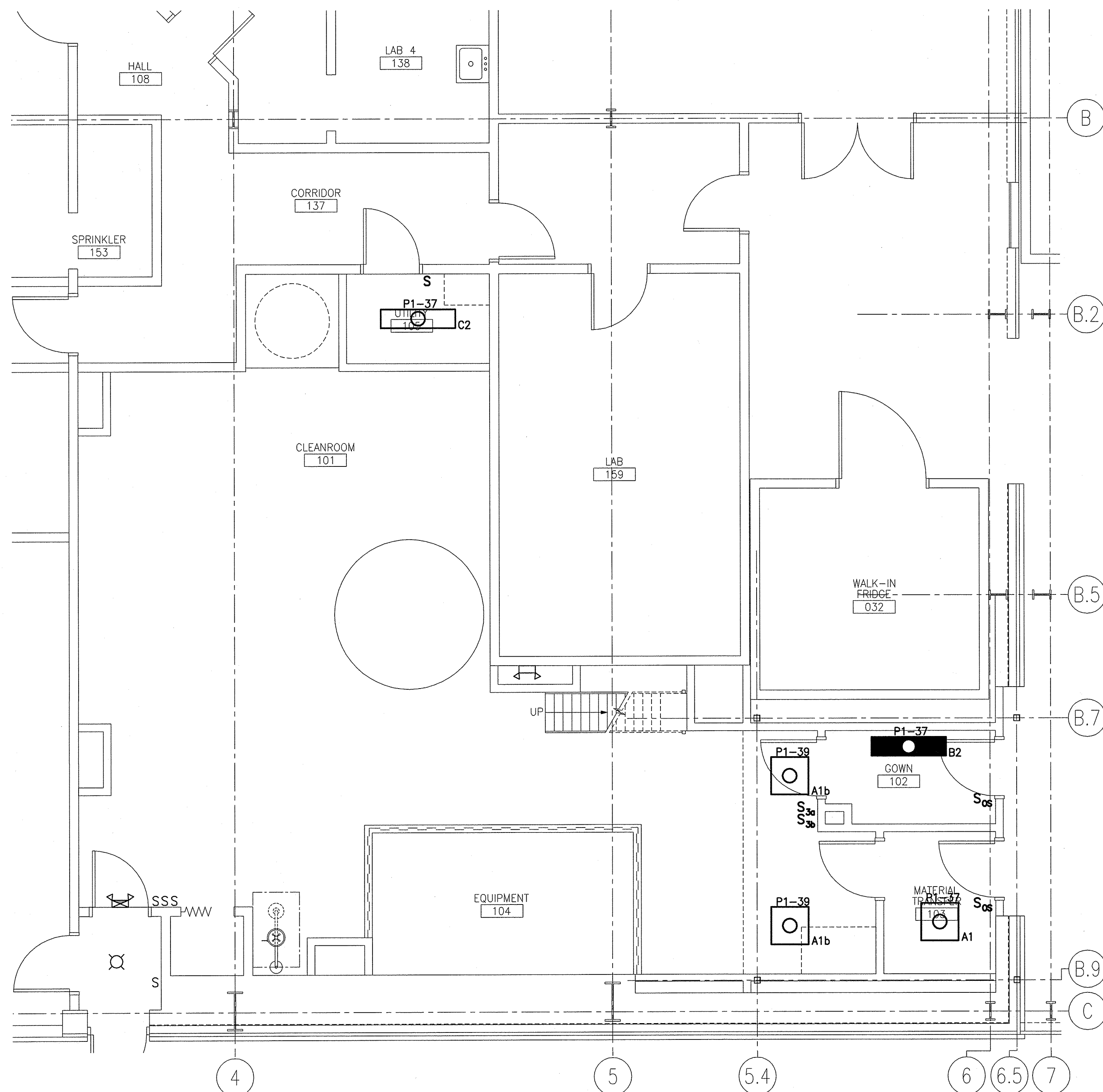
REV	DESCRIPTION	DATE
0	ISSUED FOR PERMIT	1-9-14

GRAPHIC SCALE:  
0" 1"

SCALE: 1/4" = 1'-0"  
PROJECT MANAGER: RAB  
JC/DRAWN BY: CDS  
A/E OF RECORD: WRH  
CAD FILE: 13157-EL101  
PROJECT NO: 13157  
DATE: 1-9-14

SHEET TITLE:  
FIRST AND SECOND FLOOR LIGHTING PLANS

SHEET No.  
EL101  
© COPYRIGHT 2013 SMRI INC.



A1 FIRST FLOOR PARTIAL PLAN

1/4" = 1'-0" \*

A9 SECOND FLOOR PARTIAL PLAN

1/4" = 1'-0" \*