

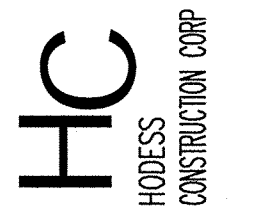
**NOTES:**

- SEE SHEET E-001 FOR LEGEND AND GENERAL NOTES.
- ALL EXISTING AND NEW RECEPTACLE AND WALL PLATES WITHIN THE SCOPE OF WORK AREA SHALL BE PERMANENTLY LABELED WITH THE PANEL AND CIRCUIT NUMBER.

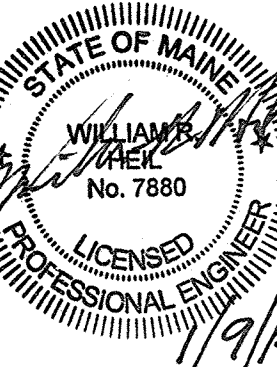
**KEYED NOTES:**

- VFD PROVIDED WITH AIR HANDLING UNIT.
- PROVIDE DUCT SMOKE DETECTORS COMPATIBLE WITH EXISTING FIRE ALARM SYSTEM.
- ADJUST HEIGHT OF EXISTING FIRE ALARM DEVICE TO 7' AFF TO CENTER TO ACCOMMODATE NEW CEILING. SPLICE AND EXTEND CONDUIT AND CONDUCTORS AS NEEDED.
- EF-1 IS TO BE PROVIDED AS ALTERNATE #1.
- INTERCEPT EXISTING RECEPTACLE CIRCUIT. PROVIDE CONTACTOR IN CIRCUIT TO DE-ENERGIZE RECEPTACLE UPON ACTIVATION OF I.P.A. ALARM. COORDINATE WITH I.P.A. ALARM REQUIREMENTS.
- SPLICE AND EXTEND EXISTING CONDUCTORS TO NEW DEVICE LOCATION AND RECONNECT.

Hodess Construction Corp  
100 John L. Diebach Sq.  
No. Attleboro, MA 02783  
508-695-1100 (P) 508-695-3101 (F)



SMRT  
144 Fore Street  
P.O. Box 618  
Portland, Maine 04104  
ARCHITECTURE  
ENGINEERING  
PLANNING  
INTERIOR DESIGN  
COMMISSIONING  
tel. (207) 772-3848  
fax. (207) 772-3070  
www.smrtinc.com



PROJECT NORTH

IMUCELL CORPORATION  
CLEANROOM RENOVATION  
PORTLAND, ME  
ISSUED FOR PERMIT  
1-9-14  
CURRENT ISSUE STATUS:

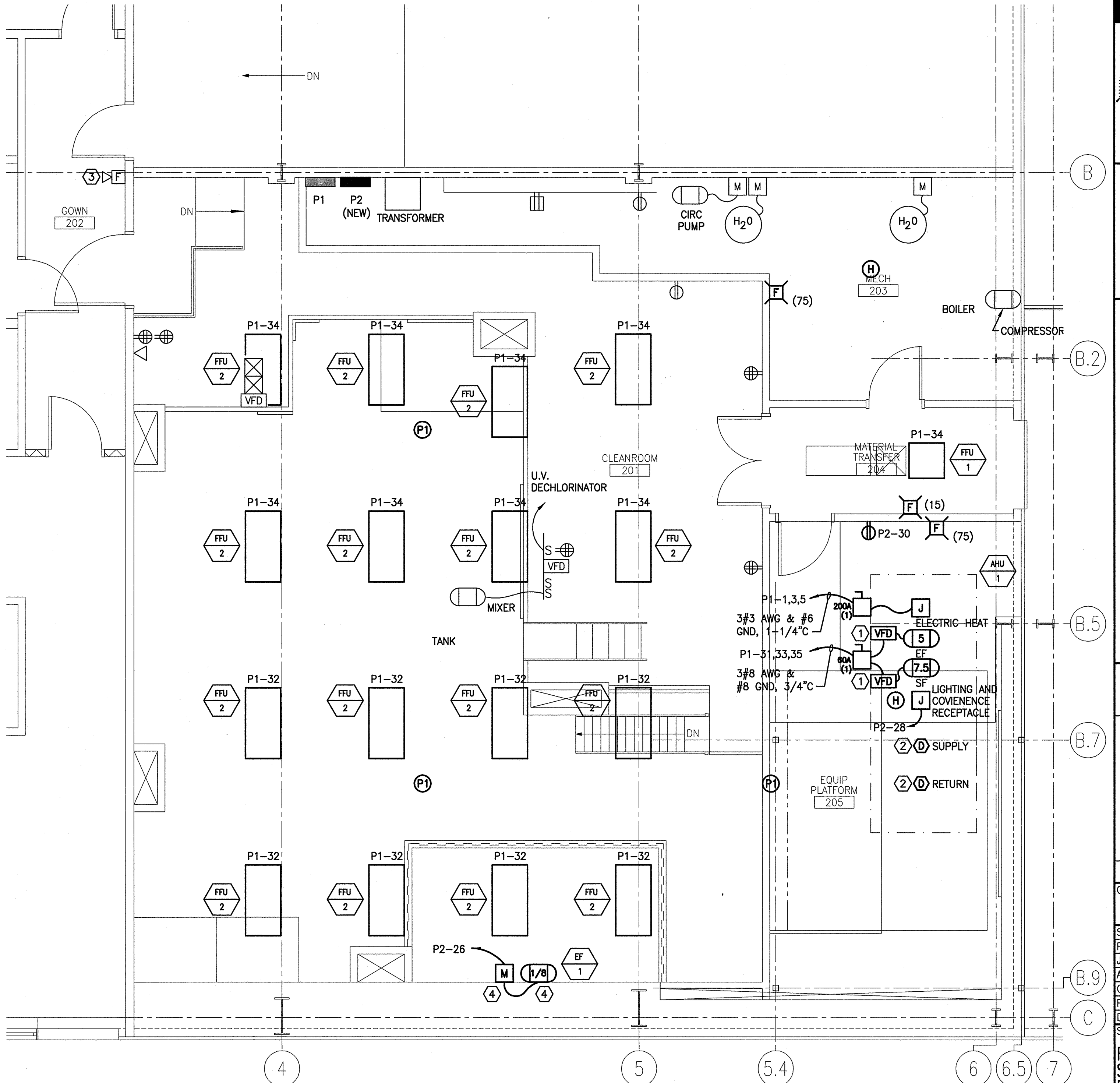
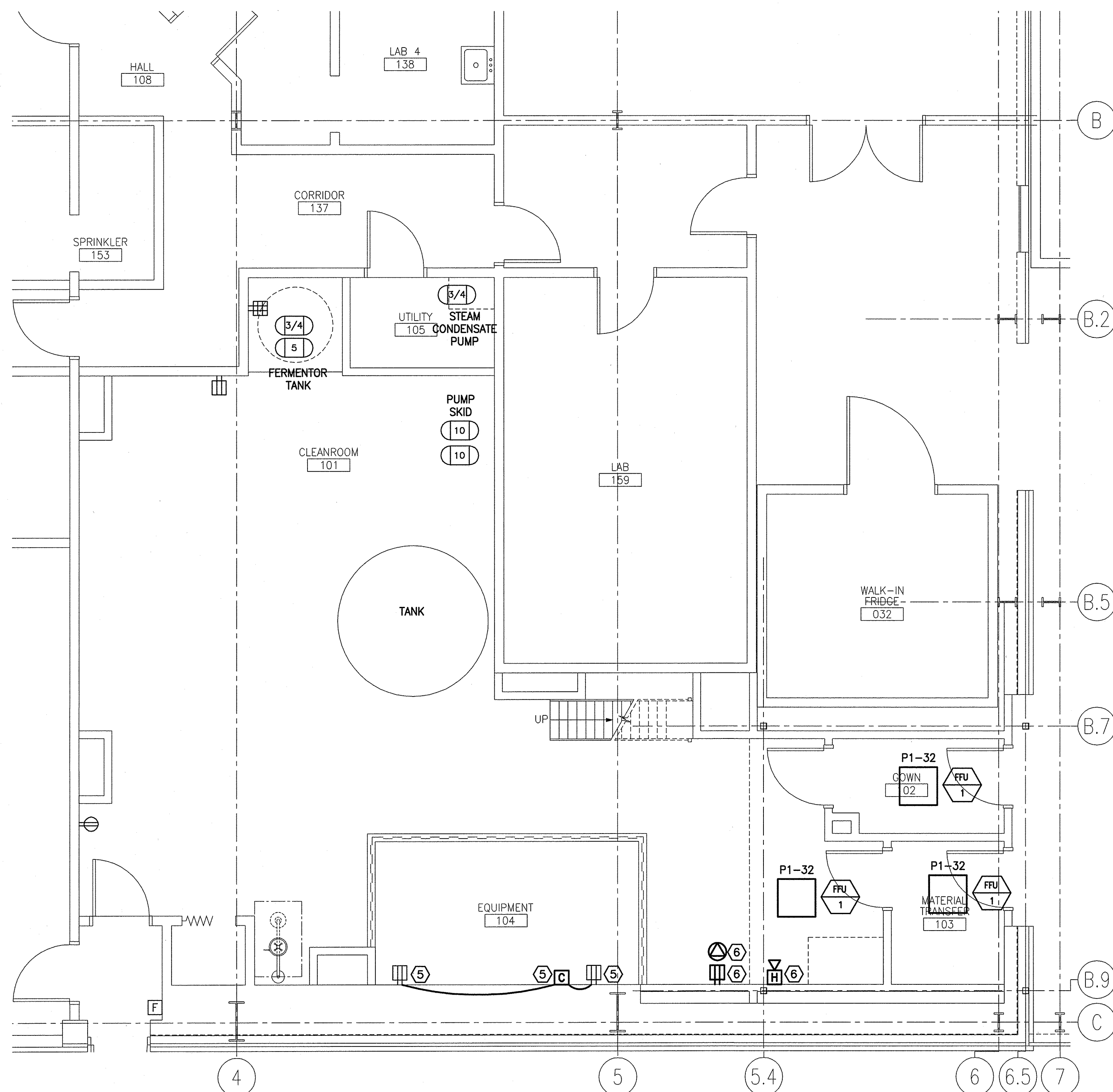
REV	DATE	DESCRIPTION
0	1-9-14	ISSUED FOR PERMIT

GRAPHIC SCALE:  
0" = 1"

SCALE: 1/4" = 1'-0"  
PROJECT MANAGER: RAB  
JC/DRAWN BY: CDS  
A/E OF RECORD: WRH  
CAD FILE: 13157-EP101  
PROJECT NO: 13157  
DATE: 1-9-14

SHEET TITLE:  
FIRST AND SECOND FLOOR POWER PLANS

SHEET No.  
EP101  
© COPYRIGHT 2013 SMRT INC.



A1 FIRST FLOOR PARTIAL PLAN

1/4" = 1'-0" \*

A9 SECOND FLOOR PARTIAL PLAN

1/4" = 1'-0" \*