

NOTES:

1. SEE SHEET E-001 FOR LEGEND AND GENERAL NOTES.
2. EQUIPMENT AND DEVICES REMAIN UNLESS NOTED.
3. SEE ONE-LINE DIAGRAM ON SHEET E-601 FOR CONDENSING UNIT FEEDER DEMOLITION AND NEW WORK.

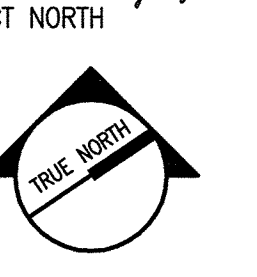
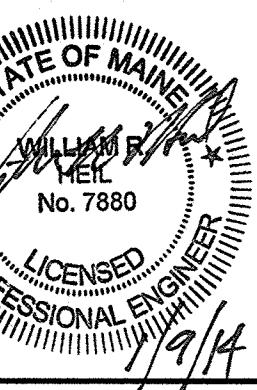
KEYED NOTES:

- ① REMOVE DISCONNECT SWITCH & MOTOR STARTER. REMOVE CIRCUIT P2-7,9,11 BACK TO PANEL P2.
- ② REMOVE PANEL P2. FEEDER AND BRANCH CIRCUITS REMAIN.
- ③ REMOVE A/C UNIT COOLER. REMOVE CIRCUIT BACK TO PANEL P2.
- ④ EXISTING EQUIPMENT REMAINS.
- ⑤ REMOVE UNIT HEATER.
- ⑥ REMOVE LIGHT FIXTURE.
- ⑦ REMOVE CEILING FAN.
- ⑧ REMOVE LIGHT FIXTURE AND SAVE FOR REINSTALLATION UNDER NEW WORK.
- ⑨ REMOVE WALL/SURFACE MOUNTED FIXTURES AND SAVE FOR REINSTALLATION UNDER NEW WORK.
- ⑩ REMOVE DEVICE AND SAVE FOR REINSTALLATION UNDER NEW WORK.

Hodess Construction Corp
100 John L. Dietch Sq.
No. Attleboro, MA 02763
508-695-1100 (P) 508-695-3101 (F)



ARCHITECTURE
ENGINEERING
PLANNING
INTERIOR DESIGN
COMMISSIONING
tel. (207) 772-3646
fax. (207) 772-1070
www.hcarrific.com



PROJECT NORTH

**IMMUCELL CORPORATION
CLEANROOM RENOVATION
PORTLAND, ME**

**ISSUED FOR PERMIT
1-9-14**

CURRENT ISSUE STATUS:

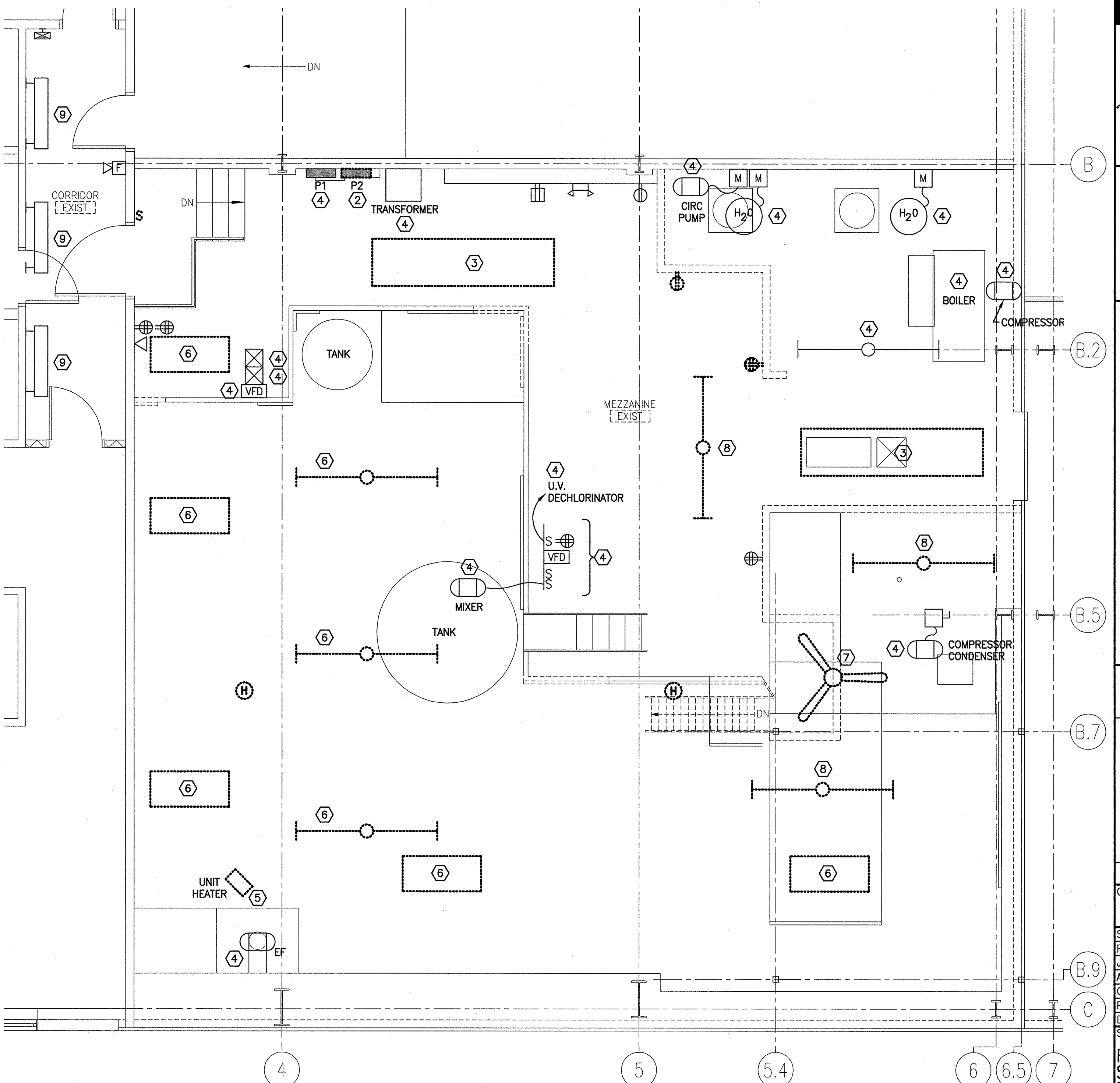
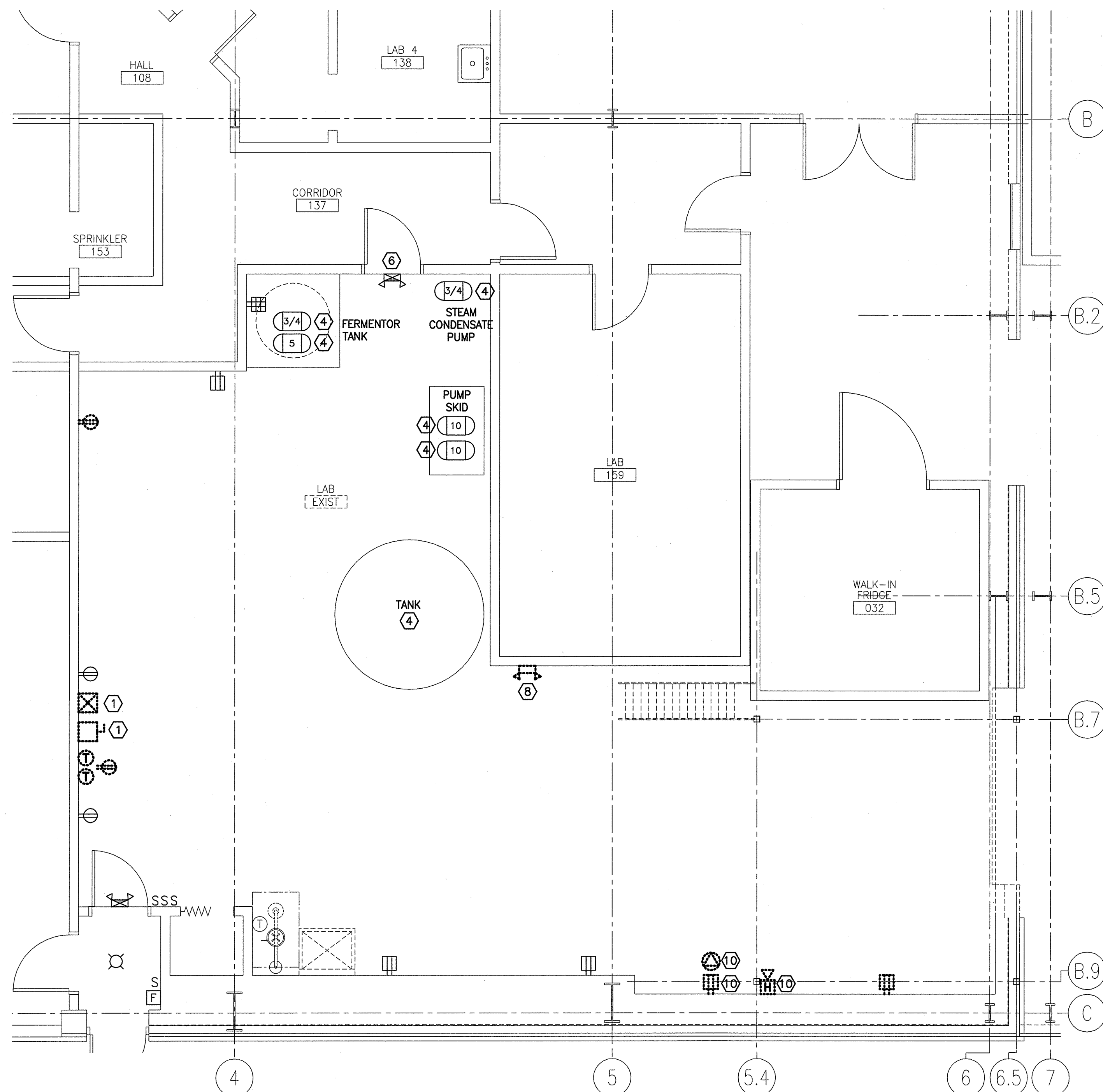
REV	DESCRIPTION	DATE
0	ISSUED FOR PERMIT	1-9-14

GRAPHIC SCALE:
0" = 1"

SCALE: 1/4" = 1'-0"
PROJECT MANAGER: RAB
JC/DRAWN BY: CDS
A/E OF RECORD: WRH
CAD FILE: 13157-ED101
PROJECT NO: 13157
DATE: 1-9-14
SHEET TITLE:

**FIRST AND
SECOND FLOOR
DEMOLITION PLANS**

SHEET No.
ED101



A1 FIRST FLOOR DEMOLITION PARTIAL PLAN

1/4" = 1'-0"

A9 SECOND FLOOR DEMOLITION PARTIAL PLAN

1/4" = 1'-0"