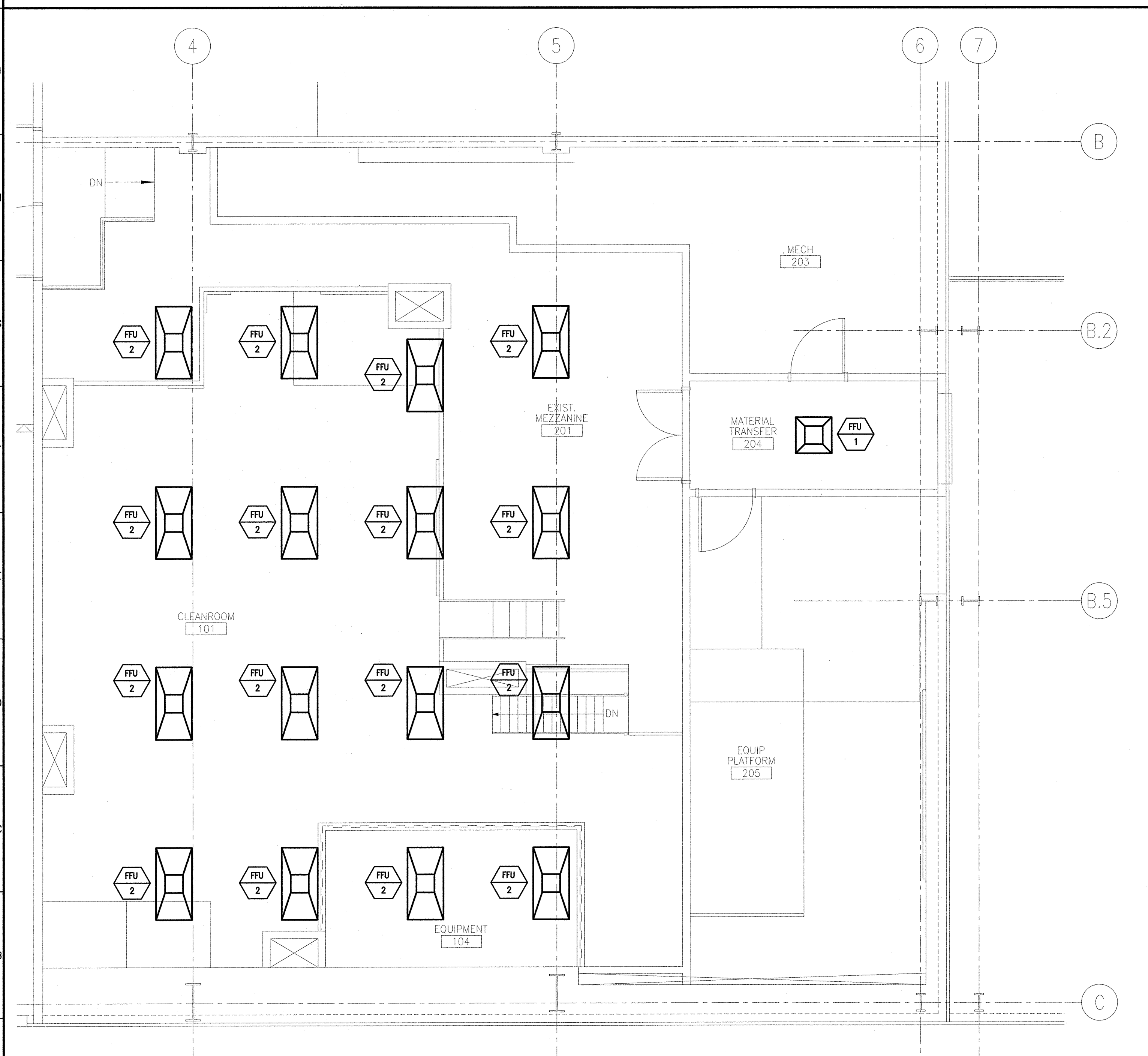


NOTE:
1. SEE SHEET M-001 FOR LEGEND AND ABBREVIATIONS.



A1 HVAC PLAN (ABOVE CAP)
1/4" = 1'-0"

Hodess Construction Corp
100 John L. Dietrich Sq.
No. Attleboro, MA 02783
508-885-1100 (F) 508-885-3101 (P)

HC
HODESS
CONSTRUCTION CORP

ARCHITECTURE
ENGINEERING
PLANNING
INTERIOR DESIGN
COMMISSIONING
tel. (207) 772-3946
fax. (207) 772-1070
www.hcsmri.com

SMRI
144 Fore Street
P.O. Box 616
Portland, Maine 04104

STATE OF MAINE
RONNIE M. WILLEY
NO. 11029
LICENSED PROFESSIONAL ENGINEER
1/10/14

PROJECT NORTH

IMMUCELL CORPORATION
CLEANROOM RENOVATION
PORTLAND, ME

ISSUED FOR PERMIT
1-9-14

CURRENT ISSUE STATUS:

REV	DESCRIPTION	DATE
0	ISSUED FOR PERMIT	1-9-14

GRAPHIC SCALE:
0" 1"

SCALE: 1/4"=1'-0"

PROJECT MANAGER: RAB
JC/DRAWN BY: KPB
A/E OF RECORD: RMW
CAD FILE: 13157-MH103
PROJECT NO: 13157
DATE: 1-9-14
SHEET TITLE:
HVAC PLAN (ABOVE CAP)

SHEET No.
MH103
© COPYRIGHT 2013 SMRI INC.