

NOTE:

1. SEE SHEET M-001 FOR LEGEND AND ABBREVIATIONS.

KEYED NOTES:

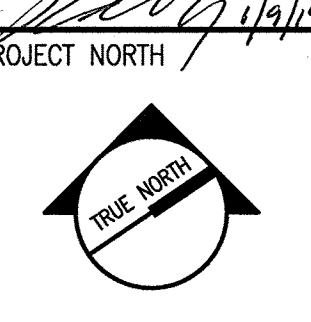
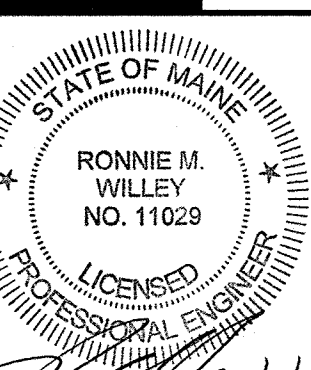
- ① AHU DRIP PAN UNDER ENTIRE AHU UNIT. PROVIDE LIQUID LEVEL SENSOR TO SHUT DOWN THE COOLING IF THERE IS WATER DETECTED.
- ② EF-1 AND ASSOCIATED CONTROLS, DUCTWORK, CURB, ETC. SHALL BE PROVIDED AS PART OF ALTERNATE #1.

HC
HODDESS
CONSTRUCTION CORP

ARCHITECTURE
ENGINEERING
PLANNING
INTERIOR DESIGN
COMMISSIONING

144 Fore Street
P.O. Box 618
Portland, Maine 04104

tel. (207) 772-3946
fax. (207) 772-1070
www.smrinc.com



**IMMUCELL CORPORATION
CLEANROOM RENOVATION**
PORTLAND, ME

**ISSUED FOR PERMIT
1-9-14**

CURRENT ISSUE STATUS:

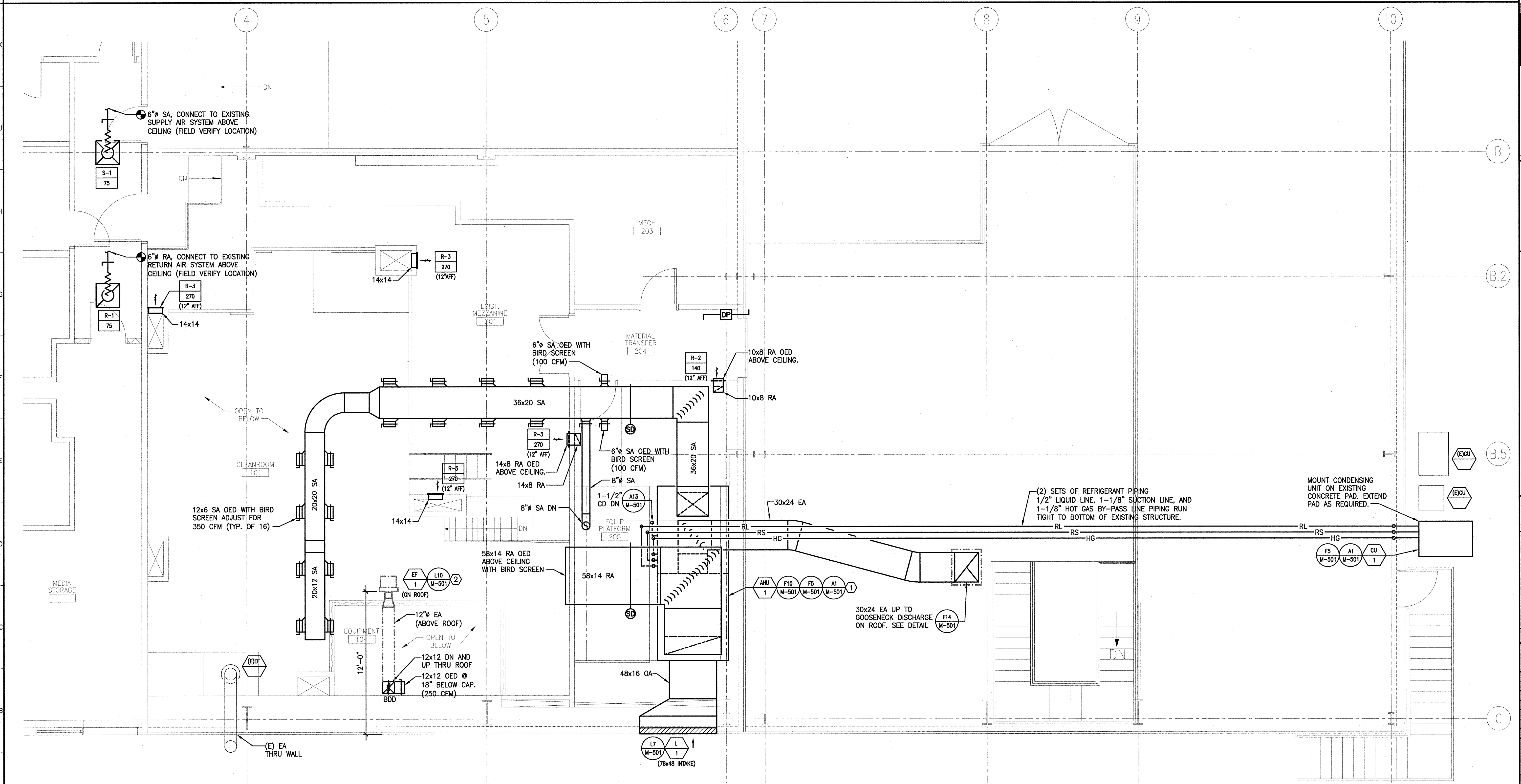
REV	DESCRIPTION	DATE
0	ISSUED FOR PERMIT	1-9-14

GRAPHIC SCALE:
0" = 1"

SCALE: 1/4" = 1'-0"
PROJECT MANAGER: RAB
JC/DRAWN BY: KPB
A/E OF RECORD: RMW
CAD FILE: 13157-MH102
PROJECT NO: 13157
DATE: 1-9-14

SHEET TITLE:
**SECOND FLOOR
HVAC PLAN**

SHEET No.
MH102
© COPYRIGHT 2013 SMRT INC.



A1 SECOND FLOOR HVAC PLAN

1/4" = 1'-0" * *