

**NOTE:**  
 1. SEE SHEET M-001 FOR LEGEND AND ABBREVIATIONS.

**HC**  
 HODGES  
 CONSTRUCTION CORP

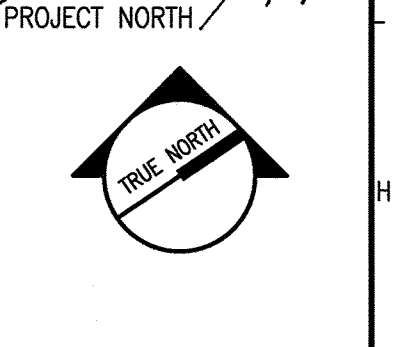
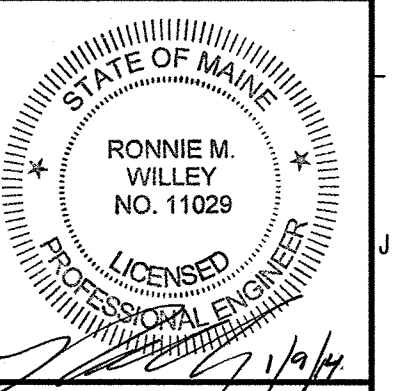
Hodges Construction Corp  
 100 John L. Dietch Sq.  
 No. Attleboro, MA 02763  
 508-695-1100 (P) 508-695-9101 (F)

**SMRI**

ARCHITECTURE  
 ENGINEERING  
 PLANNING  
 INTERIOR DESIGN  
 COMMISSIONING

144 Fore Street  
 P.O. Box 616  
 Portland, Maine 04104

tel. (207) 772-3846  
 fax. (207) 772-1070  
 www.smriti.com



**IMMUCELL CORPORATION**  
 CLEANROOM RENOVATION  
 PORTLAND, ME

**ISSUED FOR PERMIT**  
 1-9-14

CURRENT ISSUE STATUS:

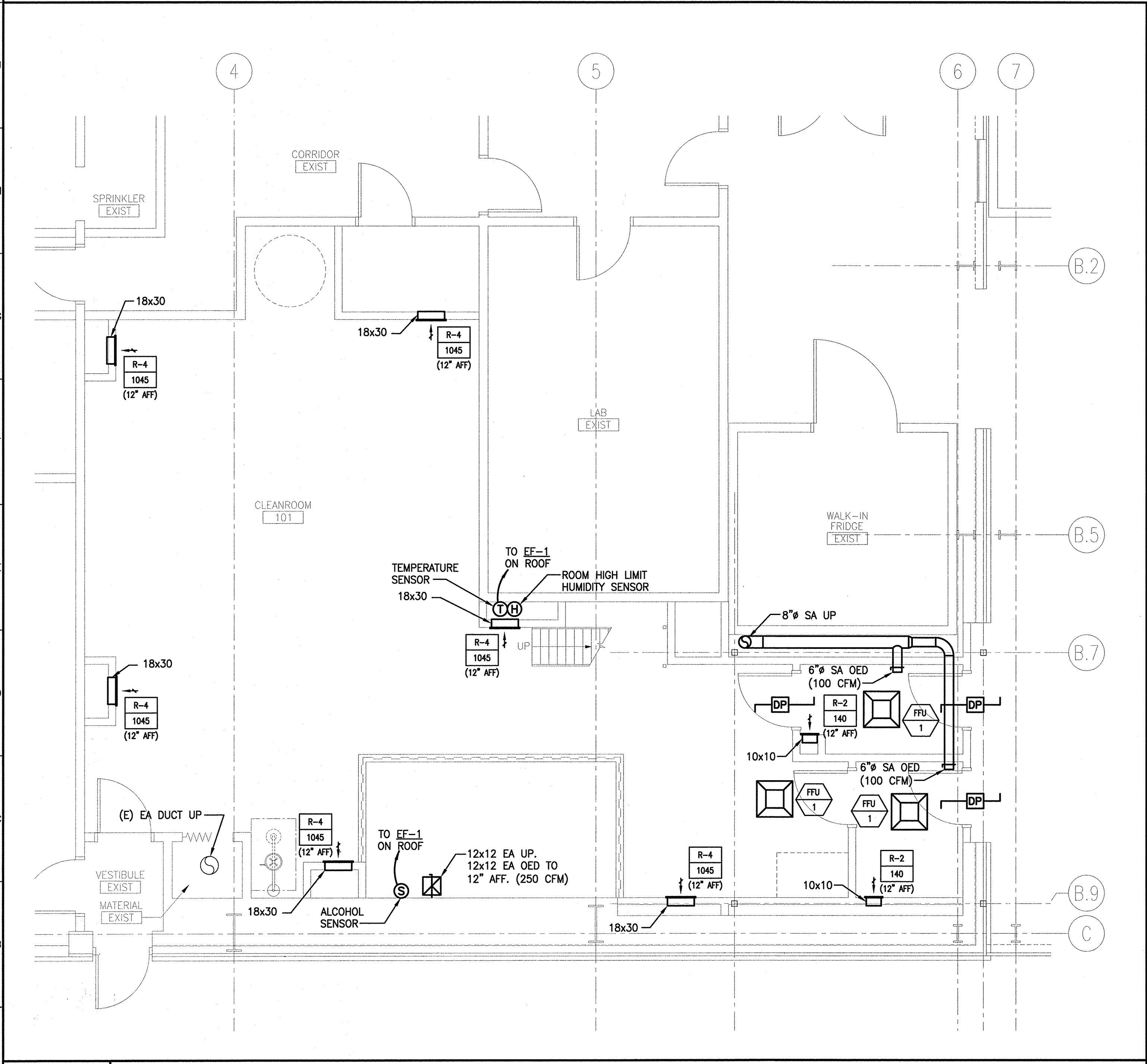
REV	DESCRIPTION	DATE
0	ISSUED FOR PERMIT	1-9-14

GRAPHIC SCALE:  
 0" = 1"

SCALE: 1/4" = 1'-0"

PROJECT MANAGER: RAB  
 JC/DRAWN BY: KPB  
 A/E OF RECORD: RMW  
 CAD FILE: 13157-MH10  
 PROJECT NO: 13157  
 DATE: 1-9-14  
 SHEET TITLE:  
**FIRST FLOOR  
 HVAC PLAN**

SHEET No.  
**MH101**  
© COPYRIGHT 2013 SMRI INC.



**A1** FIRST FLOOR HVAC PLAN

1/4" = 1'-0"