

**NOTE:**  
 1. SEE SHEET M-001 FOR LEGEND AND ABBREVIATIONS.

**KEYED NOTES:**

① REMOVE MOP SINK COMPLETE. CAP SANITARY PIPING BELOW SLAB AND PATCH FLOOR TO MATCH EXISTING. REMOVE HW AND CW BACK TO MAIN AND CAP.

② REMOVE AIR CONDITIONING UNIT AND ALL ASSOCIATED REFRIGERANT PIPING, HANGERS, SUPPORTS, ETC. COMPLETE TO CONDENSING UNIT. RECOVER REFRIGERANT PRIOR TO UNIT REMOVAL.

③ REMOVE UNIT HEATER AND ALL ASSOCIATED GAS PIPING, HANGERS, SUPPORTS, ETC. COMPLETE.

Hodess Construction Corp  
 100 John L. Dietrich Sq.  
 No. Attleboro, MA 02763  
 508-685-1100 (P) 508-685-0101 (F)

**HC**  
 HODESS  
 CONSTRUCTION CORP

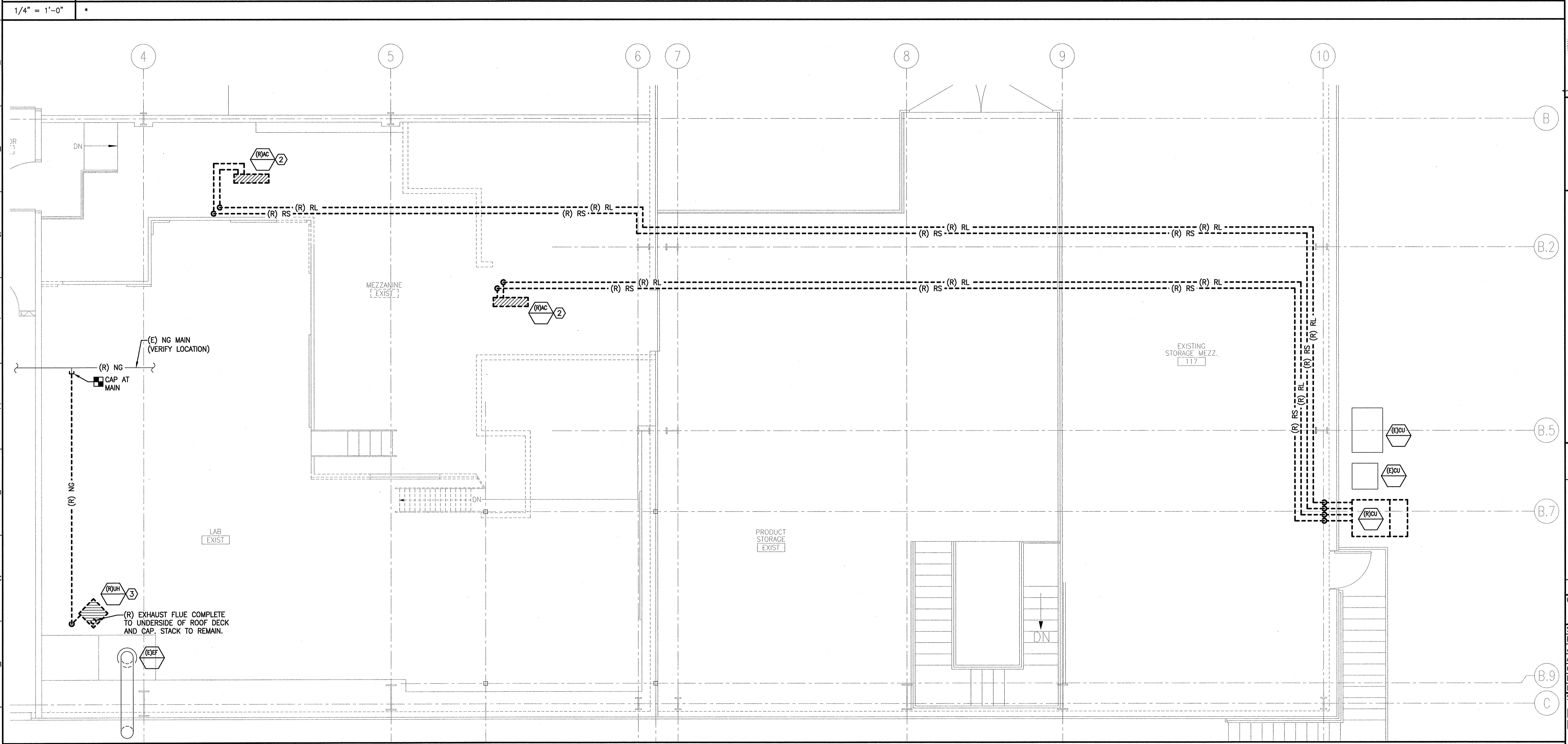
ARCHITECTURE  
 ENGINEERING  
 PLANNING  
 INTERIOR DESIGN  
 COMMISSIONING

**SMRTI**

144 Fore Street  
 P.O. Box 616  
 Portland, Maine 04104

tel. (207) 772-3646  
 fax. (207) 772-1070  
 www.smrtrc.com

**A1** FIRST FLOOR HVAC DEMOLITION PLAN



STATE OF MAINE  
 RONNIE M. WILLEY  
 NO. 11029  
 LICENSED PROFESSIONAL ENGINEER

PROJECT NORTH

TRUE NORTH

**IMMUCELL CORPORATION**  
 CLEANROOM RENOVATION  
 PORTLAND, ME

**ISSUED FOR PERMIT**  
 1-9-14

CURRENT ISSUE STATUS:

REV	ISSUED FOR PERMIT DESCRIPTION	DATE
0		1-9-14

GRAPHIC SCALE:  
 0" 1"

SCALE: 1/4" = 1'-0"

PROJECT MANAGER: RAB  
 JC/DRAWN BY: KPB  
 A/E OF RECORD: RMW  
 CAD FILE: 13157-MD101  
 PROJECT NO: 13157  
 DATE: 1-9-14  
 SHEET TITLE:  
**HVAC DEMOLITION PLANS**

**A1** SECOND FLOOR HVAC DEMOLITION PLAN

SHEET No.  
**MD101**

© COPYRIGHT 2013 SMRTI INC.